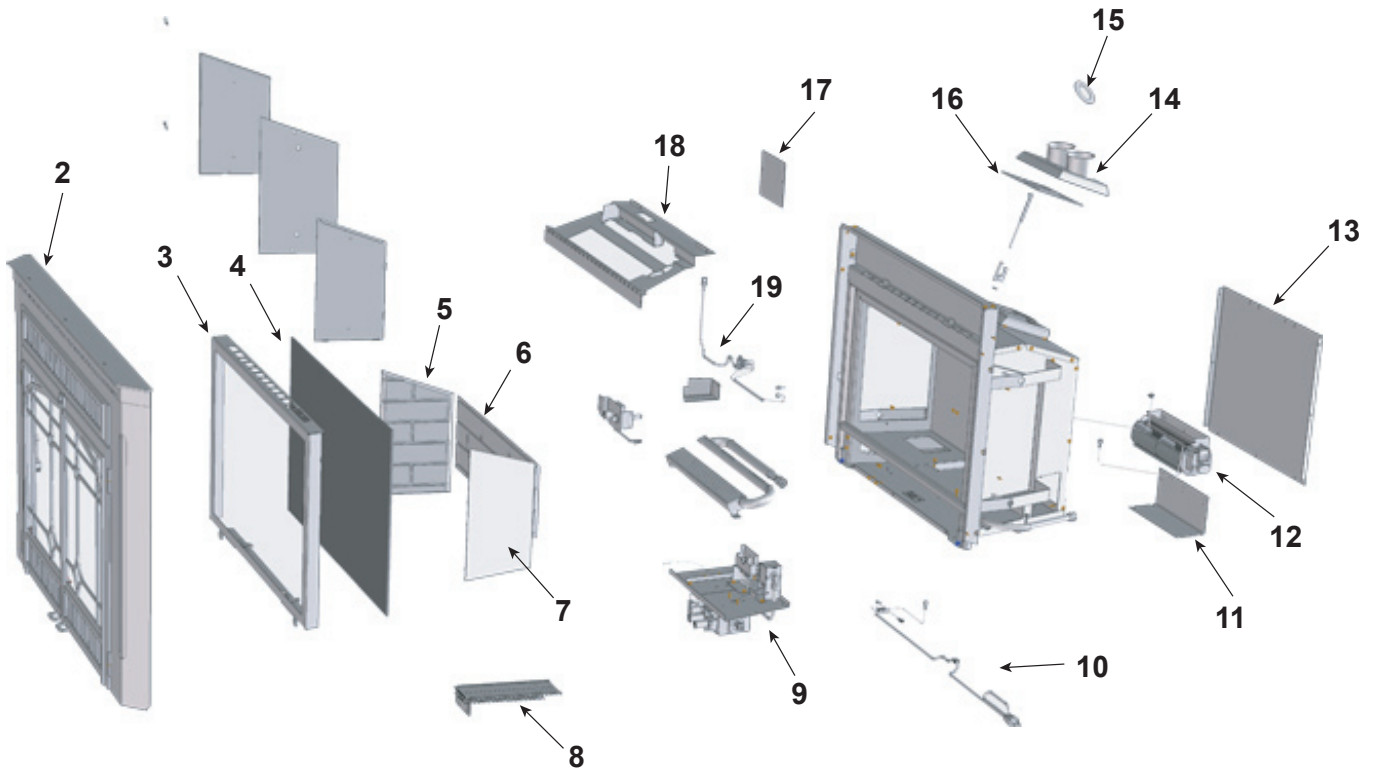


1-70-00395



**1 - Log Set Assembly**



Part number list on following page.

IMPORTANT: THIS IS DATED INFORMATION. When requesting service or replacement parts for your appliance please provide model number and serial number. All parts listed in this manual may be ordered from an authorized dealer.

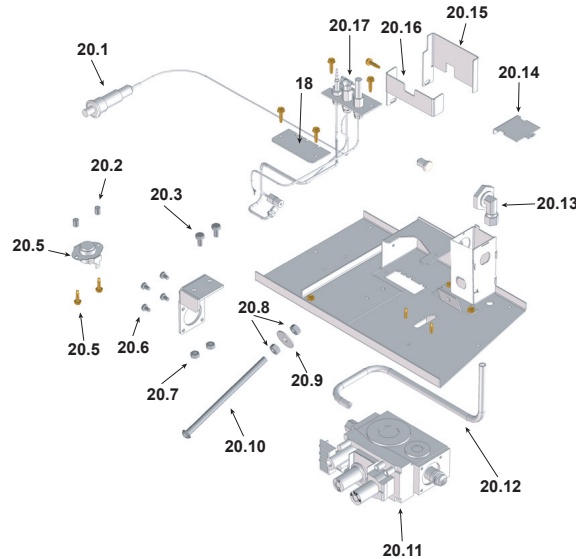


**Stocked at Depot**

ITEM	DESCRIPTION	COMMENTS	PART NUMBER	
1	Log Set Assembly	No longer available	3-40-00384	
2	Face Assembly, Black	No longer available	1-00-384200-1	
3	Glass Door Frame		2-00-384111B	
4	Glass, Rectangle, 18.5 x 28.9	No longer available	3-40-18502900	
5	Brick Panel, Left	No longer available	3-40-384319-1	
6	Brick Panel, Rear	No longer available	3-40-384318	
7	Brick Panel, Right	No longer available	3-40-384319-2	
8	Label Bracket Assembly		1-10-384136	
9	Valve Assembly - LP	No longer available	1-10-384329A	
10	Power Cord Harness	No longer available	3-20-348328	
11	Blower Mount	No longer available	2-00-384315B	
12	Distribution Blower Motor		SRV3-21-32080	Y
13	Cover, Rear		2-00-384317B	
14	Tail Pipe Weldment		1-10-384314W	
15	Flue Restrictor Plate, 2"		2-00-384321L	
	Flue Restrictor Plate, 1.75"		2-00-384323L	
16	Tail Pipe Gasket		3-44-384328	
17	Flue Access Cover		2-00-384325L	
18	Air Plate Assembly		1-10-384307	
19	Low vVoltage Harness	No longer available	3-20-348329	
	Conversion Kit - NG	No longer available	1-00-00384	
	Conversion Kit - LP	No longer available	1-00-00385	
	Double Pilot Orifice (.026/.020) - NG	No longer available	3-40-08909	
	Double Pilot Orifice (.026/.014) - LP	No longer available	3-40-971157	
	Female thread orifice #31 - NG	No longer available	3-40-09213	
	Female thread orifice #50 - LP	No longer available	3-40-09212	
	Valve 40% Td Conversion Kit - NG	No longer available	3-40-907207	
	Valve 40% Td Conversion Kit - LP	No longer available	3-40-907206	

Additional service part numbers appear on following page.

### #20 Burner Module Assembly



IMPORTANT: THIS IS DATED INFORMATION. When requesting service or replacement parts for your appliance please provide model number and serial number. All parts listed in this manual may be ordered from an authorized dealer.



**Stocked  
at Depot**

ITEM	DESCRIPTION	COMMENTS	PART NUMBER	
20.1	Piezo (igniter) with nut	No longer available	3-40-08220	
20.2	Spacers	No longer available	3-31-90309017	
20.3	Bolts 1/4" x 20 x 1/2" GR8	Pkg of 50	3-30-1109-50	Y
20.4	Snap disc (opens-110 / closes-120 - fan control)		3-20-23246	Y
20.5	Tex Screws #10 x 3/4	Pkg of 100	3-30-5004-100	Y
20.6	Valve Mounting Screws	No longer available	3-30-1000-50	
20.7	Nuts 1/4" x 20	Pkg of 100	3-30-8004-100	Y
20.8	Nuts 5/16" x 18	Pkg of 100	3-30-8005-100	Y
20.9	Adjuster Disc		2-00-384142L	
20.10	Pan Headbolt 5/16" x 18 x 6"	No longer available	3-30-631186001	
20.11	Control Valve - NG	No longer available	3-40-820662	
	Control Valve - LP	No longer available	3-40-820653	
20.12	Primary Gas Tube		2-00-384128B	
20.13	OPS Elbow	No longer available	3-40-08779	
20.14	Tube Box Top		2-00-384135B	
20.15	Pilot Cover, rear		2-00-384346B	
20.16	Pilot Cover, front		2-00-384345B	
20.17	Pilot complete - NG	No longer available	3-40-08714	
	Pilot complete - LP	No longer available	3-40-08715	
20.18	Pilot Sealer Plate		2-00-384120L	
	Gasket, 3/16 x 5/8 Flat	No longer available	1-00-08792	

Additional service part numbers appear on following page.

