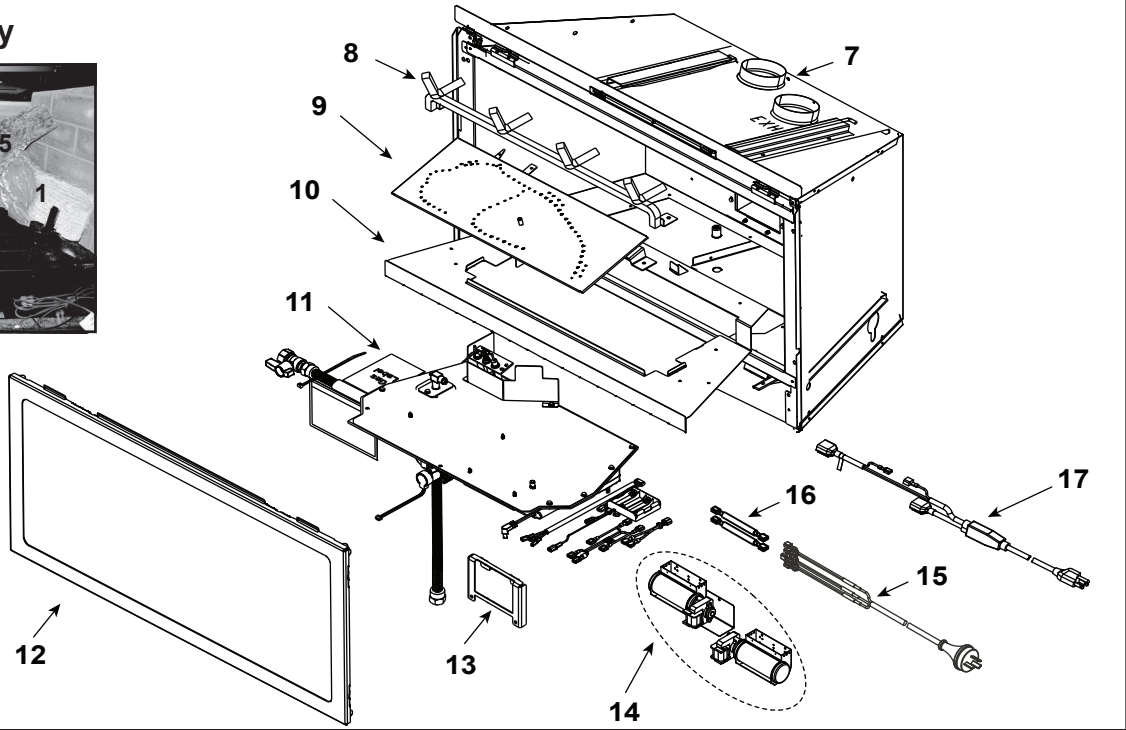


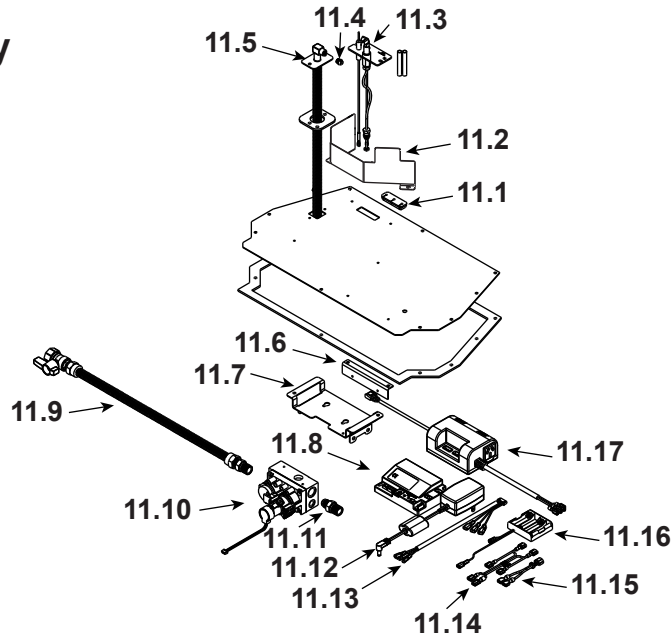
### Log Set Assembly



**IMPORTANT: THIS IS DATED INFORMATION.** Parts must be ordered from a dealer or distributor. **Hearth and Home Technologies does not sell directly to consumers.** Provide model number and serial number when requesting service parts from your dealer or distributor.

ITEM	DESCRIPTION	COMMENTS	PART NUMBER
	Log Assembly		LOGS-I30
1	Log 1		SRV2206-701
2	Log 2		SRV2206-705
3	Log 3		SRV2206-702
4	Log 4		SRV2206-704
5	Log 5		SRV2206-703
6	Log 6		SRV2206-706
7	Termination Plate Assembly		2206-013
	Flex Pipe Handle		438-351
	Gasket		2206-178
8	Grate Assembly		2206-016
9	Burner Assembly		2206-009
10	Base Pan		2206-127
11	Valve Assembly		<b>See following page</b>
12	Glass Door Assembly		GLA-2206
13	Control Panel		2222-129
14	Blower		GFK-210-240V
15	Jumper Plug Fan to AUX		2222-068
16	Fuse Wire Harness	Qty 2 req	2166-341
17	Cord Assembly		SRV2222-374

### #11 Valve Assembly



**IMPORTANT: THIS IS DATED INFORMATION.** Parts must be ordered from a dealer or distributor. **Hearth and Home Technologies does not sell directly to consumers.** Provide model number and serial number when requesting service parts from your dealer or distributor.

ITEM	DESCRIPTION	COMMENTS	PART NUMBER
11.1	Grommet, 3 Hole		SRV2118-420
11.2	Pilot Shield		2206-120
11.3	Pilot Assembly NG		2202-013
	Pilot Assembly LP		2202-014
11.4	Orifice NG (#35C)		SRV582-835
	Orifice LP (#51C)		SRV582-851
	Orifice B (#53C)		582-853
11.5	Flexible Gas Connector		530-302A
11.6	Control Panel Bracket		2205-128
11.7	Valve Bracket		2205-146
11.8	Module		2166-347
11.9	Flex Ball Valve Assembly		SRV302-320
11.10	Valve NG		2166-302
	Valve LP		2166-303
11.11	Brass Connector	Pkg of 5	303-315/5
11.12	Power Supply		SRV2326-131
11.13	Wire Harness		2166-304
11.14	Remote Jumper Wire		2103-013
11.15	Jumper Wire		SRV2187-198
11.16	**Battery Pack		SRV2166-323
11.17	Aux 300 CE		2166-340

\*\*Fuse for battery pack can be sourced locally, not a warranty item.

Additional service part numbers appear on following page.



No one builds a better fire

Service Parts

SUPREME-I30-NZ

Beginning Manufacturing Date: Feb 2017
Ending Manufacturing Date: Feb 2019

IMPORTANT: THIS IS DATED INFORMATION. Parts must be ordered from a dealer or distributor. Hearth and Home Technologies does not sell directly to consumers. Provide model number and serial number when requesting service parts from your dealer or distributor.

Table with 4 columns: ITEM, DESCRIPTION, COMMENTS, PART NUMBER. Rows include Gasket Assembly, Glass Clip Support Assembly, Glass Latch Assembly, Lava Rock, Mineral Wool, Refractory Kit, Remote, Touch up Paint, EMC Filter, Front, Surround, Conversion Kit NG, Conversion Kit LP & Butane, Pilot Orifice NG, Pilot Orifice LP, Regulator NG, and Regulator LP.