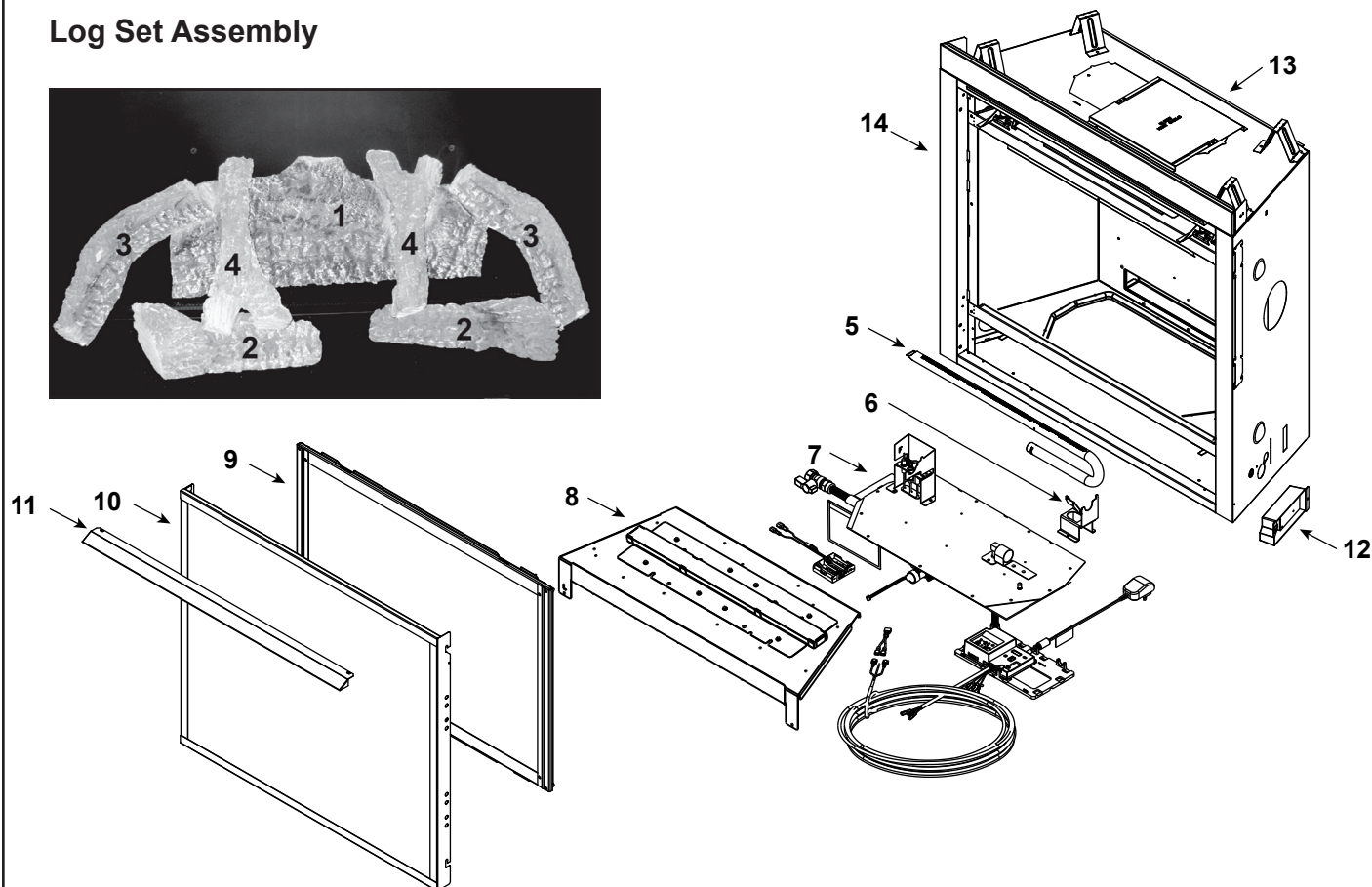
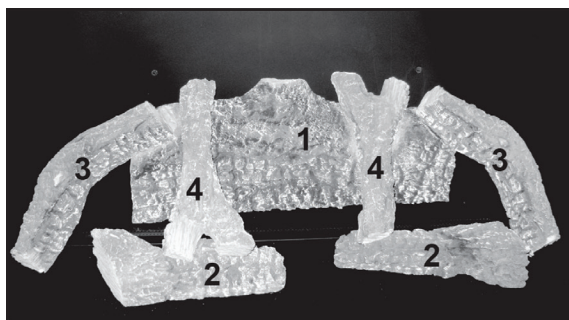


Log Set Assembly



IMPORTANT: THIS IS DATED INFORMATION. Parts must be ordered from a dealer or distributor.

Hearth and Home Technologies does not sell directly to consumers. Provide model number and serial number when requesting service parts from your dealer or distributor.

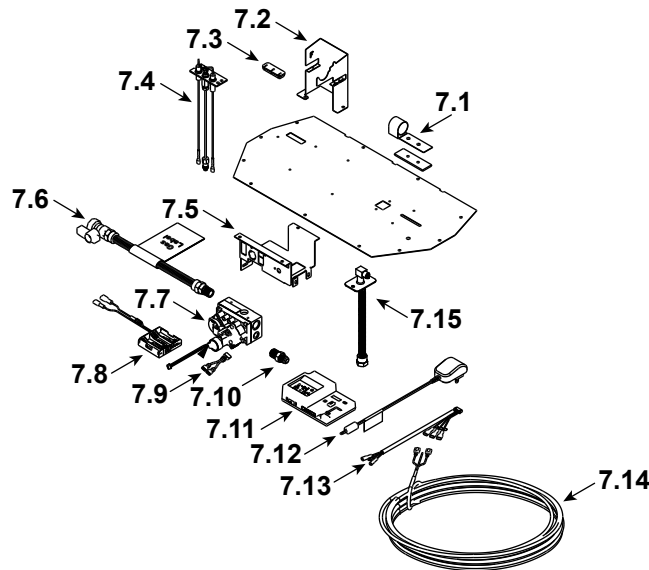


**Stocked
at Depot**

ITEM	DESCRIPTION	COMMENTS	PART NUMBER	
	Log Set Assembly		LOGS-750F	Y
1	Log 1		SRV2298-700	
2	Log 2	Qty 2 req	SRV2033-709	
3	Log 3		SRV2033-721	
4	Log 4	Qty 2 req	SRV2033-720	
5	Burner NG, LP		2298-105	Y
6	Burner Leg		2297-103	
7	Valve Assembly		See following page	
8	Base pan		2298-017	
9	Glass Door Assembly		GLA-750TR	Y
10	Firescreen Front		FS-7-BK	Y
11	Hood		2118-230	
12	Junction box	Pre LC6531528	SRV4021-013	Y
		Post LC6531528	SRV2326-013	Y
13	Elbow Heat Shield		385-290	
14	Overlay Kit		SRV750-FACE	

Additional service part numbers appear on following page.

#7 Valve Assembly



IMPORTANT: THIS IS DATED INFORMATION. Parts must be ordered from a dealer or distributor. **Hearth and Home Technologies does not sell directly to consumers.** Provide model number and serial number when requesting service parts from your dealer or distributor.



**Stocked
at Depot**

ITEM	DESCRIPTION	COMMENTS	PART NUMBER	
7.1	Shutter Bracket Assembly		2118-121	Y
7.2	Pilot Bracket		2297-112	
7.3	3-Hole Grommet		SRV2118-420	
7.4	Pilot Assembly NG		SRV2090-012	Y
	Pilot Assembly LP		2090-013	Y
	Pilot Tube		SRV485-301	Y
7.5	Valve Bracket		2118-104	
7.6	Flex Ball Valve Assembly		SRV302-320	Y
7.7	Valve NG		SRV2166-302	Y
	Valve LP		2166-303	Y
7.8	Battery Pack **		SRV2326-134	Y
7.9	Jumper Wire		SRV2187-198	Y
7.10	Male Connector	Pkg of 5	303-315/5	Y
7.11	Module, IFT Control		SRV2326-130	Y
7.12	6 Volt Transformer		SRV2326-131	Y
7.13	Wire Harness, IFT 6 Pin		SRV2326-132	Y
7.14	Thermostat Wire Assembly		SRV2118-170	Y
7.15	Bulkhead w/Flex Tube		SRV7000-156	Y
	Orifice NG (#42)		582-842	Y
	Orifice LP (#54)		SRV582-854	Y

**Fuse for battery pack can be sourced locally, not a warranty item. Specs are 250v, 3A fuse, 3/4" long

Additional service part numbers appear on following page.



Service Parts

SL-7F-IFT

No one builds a better fire

Beginning Manufacturing Date: March 2020

Ending Manufacturing Date: Active

IMPORTANT: THIS IS DATED INFORMATION. Parts must be ordered from a dealer or distributor.

Hearth and Home Technologies does not sell directly to consumers. Provide model number and serial number when requesting service parts from your dealer or distributor.



Stocked at Depot

[illegible]