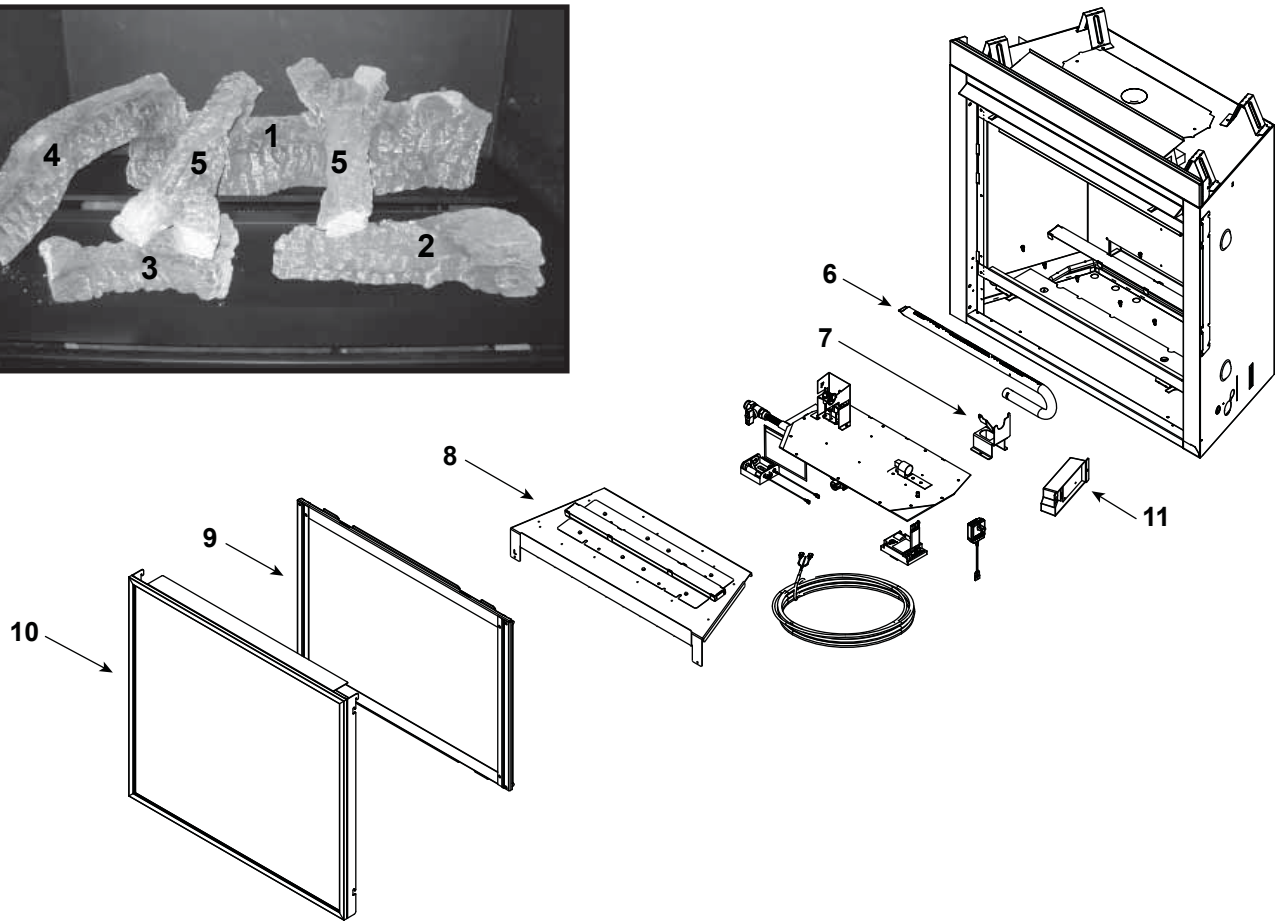
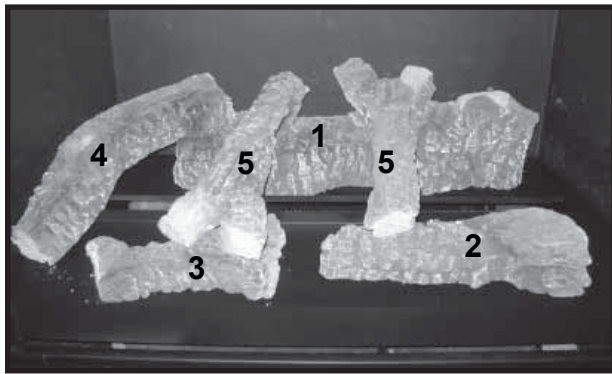


## Log Set Assembly



IMPORTANT: THIS IS DATED INFORMATION. Parts must be ordered from a dealer or distributor. **Hearth and Home Technologies does not sell directly to consumers.** Provide model number and serial number when requesting service parts from your dealer or distributor.



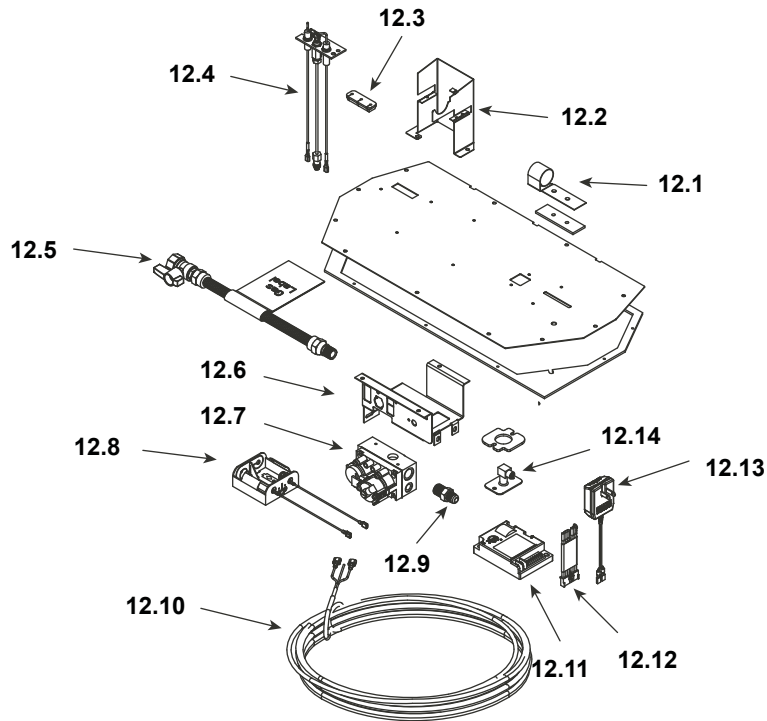
Stocked at Depot

ITEM	DESCRIPTION	COMMENTS	PART NUMBER	
	Log Set Assembly		Logs-550F	Y
1	Log 1	Pre 5/15/16, Must order complete assembly	SRV2297-700	
2	Log 2		SRV2033-709	
3	Log 3		SRV2033-708	
4	Log 4		SRV2033-721	
5	Log 5		SRV2033-720	
6	Burner NG, LP		2297-105	Y
7	Burner Leg		2297-103	
8	Base Pan		2297-017	
9	Glass Door Assembly		GLA-550TR	Y
10	Firescreen Front		SRV2355-021	
	Replacement orders Pre 0023877692 must order SHOW-RIVNUT			
11	Junction Box		SRV4021-013	Y

No one builds a better fire

Beginning Manufacturing Date: May 2013  
Ending Manufacturing Date: Dec 2016

### #12 Valve Assembly



**IMPORTANT: THIS IS DATED INFORMATION.** Parts must be ordered from a dealer or distributor. **Hearth and Home Technologies does not sell directly to consumers.** Provide model number and serial number when requesting service parts from your dealer or distributor.



**Stocked  
at Depot**

ITEM	DESCRIPTION	COMMENTS	PART NUMBER	
12.1	Shutter Bracket Assembly		2118-121	Y
12.2	Pilot Bracket		2297-112	
12.3	3-Hole Grommet		SRV2118-420	
12.4	Pilot Assembly NG		SRV2090-012	Y
	Pilot Assembly LP		2090-013	Y
	Pilot Tube		SRV485-301	Y
12.5	Flex Ball Valve Assembly		SRV302-320	Y
12.6	Valve Bracket		2118-104	
12.7	Valve NG		750-500	Y
	Valve LP		750-501	Y
12.8	Battery Pack		SRV593-594	Y
12.9	Male Connector	Pkg of 5	303-315/5	Y
12.10	Thermostat Wire Assembly		SRV2118-170	Y
12.11	Module		593-592	Y
12.12	Module Wire Assembly		SRV593-590	Y
12.13	3 Volt Transformer		SRV593-593	Y
12.14	Flexible Gas Connector		SRV7000-156	Y
	Male-Male 2" Jumper Wires		2012-206	Y
	Orifice NG (#45)		582-845	Y
	Orifice LP (1.25 mm)		582-8125	Y

Additional service part numbers appear on following page.



No one builds a better fire

Beginning Manufacturing Date: May 2013  
Ending Manufacturing Date: Dec 2016

IMPORTANT: THIS IS DATED INFORMATION. Parts must be ordered from a dealer or distributor. **Hearth and Home Technologies does not sell directly to consumers.** Provide model number and serial number when requesting service parts from your dealer or distributor.



Stocked  
at Depot

ITEM	DESCRIPTION	COMMENTS	PART NUMBER	Stocked at Depot
	Exhaust Baffle		550-155	
	Exhaust Restrictor		530-299	
	Gasket Assembly Contains Burner neck, shutter bracket, vent, seal cap, valve plate, and air passage gaskets		2115-080	
	Glass Latch Assembly	Pkg of 2	33858/2	Y
	Heat Shield, Junction Box		2185-117	
	Het Shield, Header		2118-120	
	Hood		2115-230	
	Bottom Panel	Pre 0023877692	2297-106	
	Lava Rock		4021-297	
	Rock Placement Jig		2297-113	
	Touch Up Paint		TUP-GBK-12	
	Valve Plate Cover		2188-101	
	Conversion Kit NG		NGK-550F	Y
	Conversion Kit LP		LPK-550F	Y
	Pilot Orifice NG		SRV593-528	Y
	Pilot Orifice LP		SRV593-527	Y
	Regulator NG		SRVNGK-DXV	Y
	Regulator LP		SRVLPK-DXV	Y