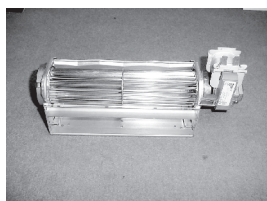
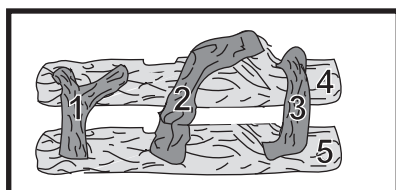
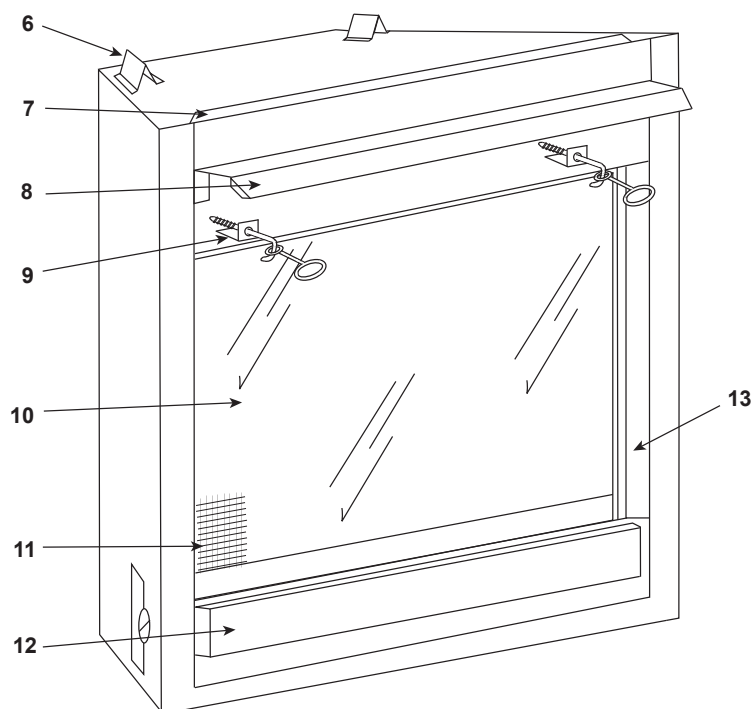


### Log Set Assembly



14



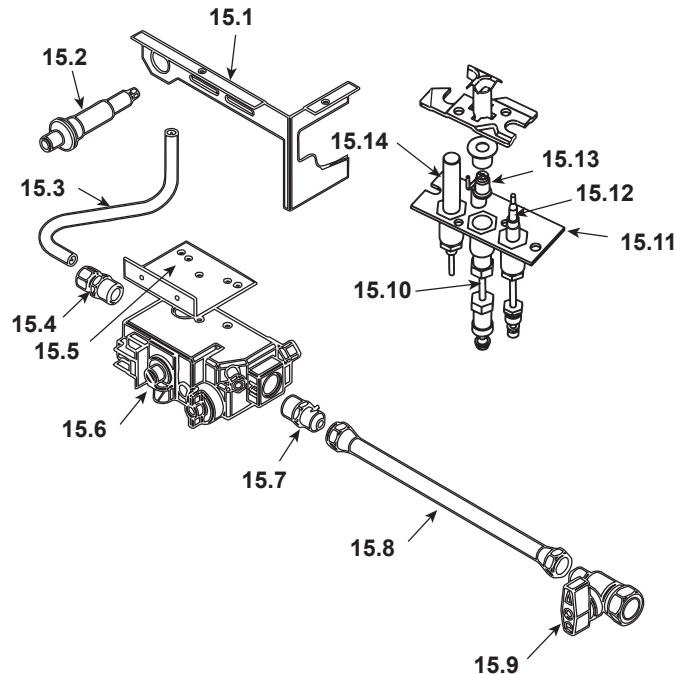
IMPORTANT: THIS IS DATED INFORMATION. Parts must be ordered from a dealer or distributor. **Hearth and Home Technologies does not sell directly to consumers.** Provide model number and serial number when requesting service parts from your dealer or distributor.



**Stocked  
at Depot**

ITEM	DESCRIPTION	COMMENTS	PART NUMBER	
	<b>Log Assembly</b>	<b>No longer available</b>	29416	
1	Top Left Log		SRV25226	
2	Top Middle Log		SRV29414	
3	Top Right Log		SRV27127	
4	Back Log		SRV28590	
5	Front Log		SRV28589	
6	Top Standoffs	Qty 2 req	SRV4044-111	
7	Drywall Flange	<b>No longer available</b>	30150	
8	Hood	<b>No longer available</b>	28578	
9	Glass Catch Latch Assembly	<b>No longer available</b>	30038	
10	Glass Assembly	<b>No longer available</b>	28587	
11	Screen Assembly	<b>No longer available</b>	31159	
12	Lower Front Face (riveted)	Overlay only	28586	
13	Glass Retainer		26798	
14	Fan Kit	<b>No longer available</b>	FKSIM	
	Fan Kit Fastener Pack	<b>No longer available</b>	30041	

## #15 Millivolt Valve Assembly



IMPORTANT: THIS IS DATED INFORMATION. Parts must be ordered from a dealer or distributor. **Hearth and Home Technologies does not sell directly to consumers.** Provide model number and serial number when requesting service parts from your dealer or distributor.



**Stocked  
at Depot**

ITEM	DESCRIPTION	COMMENTS	PART NUMBER	
15.1	Valve Bracket	No longer available	29763	
15.2	Piezo Ignitor		291-513	Y
15.3	Burner Supply Tube	No longer available	30016	
15.4	Brass Connector Male - Tube		13425	
15.5	Valve Support	No longer available	29764	
15.6	Valve - NG		SRV23363	Y
	Valve - LP		SRV25812	Y
15.7	Brass Male Connector Flex	Pkg of 5	303-315/5	Y
15.8	Flex Gas Line 10 in. Stainless Steel		SRV302-320	Y
15.9	ON/OFF Valve		SRV15697	Y
15.10	Pilot Supply Tube		SRV446-301	Y
15.11	Millivolt Pilot Assembly - NG	No longer available	29473	
	Millivolt Pilot Assembly - LP	No longer available	29474	
15.12	Thermocouple		SRV72956	Y
15.13	Pilot Orifice (.021) - NG		SRV446-505	Y
	Pilot Orifice (.0115) - LP		SRV446-517	Y
15.14	Thermopile		2103-512	Y
	Burner Orifice (.089) - NG		SRV14046	Y
	Burner Orifice (.052) - LP		SRV14047	Y

Additional service part numbers appear on following page.

**Beginning Manufacturing Date: July 1998**

**Ending Manufacturing Date: Aug. 2001**

**IMPORTANT: THIS IS DATED INFORMATION.** Parts must be ordered from a dealer or distributor. **Hearth and Home Technologies does not sell directly to consumers.** Provide model number and serial number when requesting service parts from your dealer or distributor.



## Stocked at Depot

[illegible]