

IMPORTANT: THIS IS DATED INFORMATION. Parts must be ordered from a dealer or distributor. **Hearth and Home Technologies does not sell directly to consumers.** Provide model number and serial number when requesting service parts from your dealer or distributor.

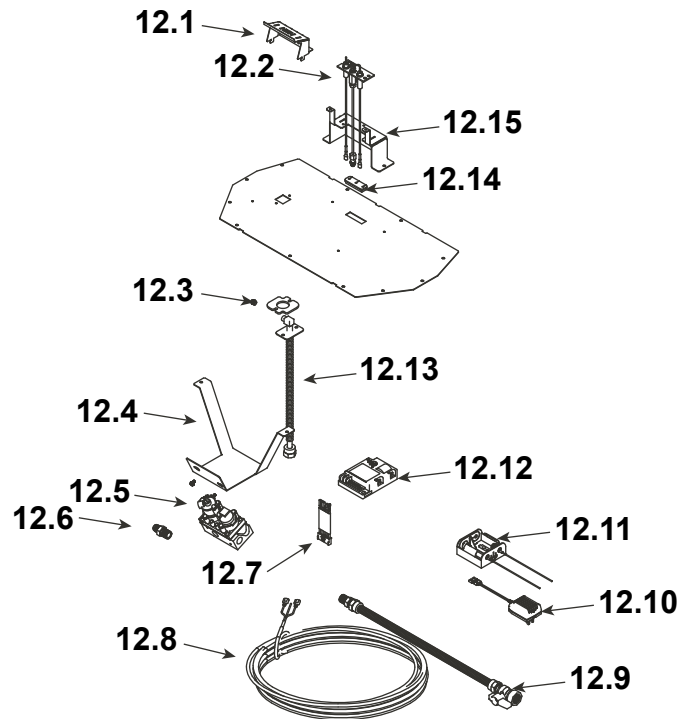


**Stocked
at Depot**

ITEM	DESCRIPTION	COMMENTS	PART NUMBER	
1	Sheet Rock Ledge		SRV2333-135-BK	
2	Top Panel Finish Edge		SRV2292-102-BK	
3	Non Combustible Board	No longer available	2333-405	
4	Tray, Clean Cover	No longer available	2293-117	
5	Base Pan		SRV2292-010-BK	
6	Burner Assembly		SRV2292-007-BK	Y
7	Glass Door Assembly		GLA-SLR	Y
8	Lower Cover Panel		SRV2184-103-BK	
9	Junction box		SRV4021-013	Y
10	Bracket, Junction Box		SRV2195-154	
11	Nailing Tab	Qty 2 req	SRV2333-137-BK	

Additional service part numbers appear on following page.

#12 Valve Assembly



IMPORTANT: THIS IS DATED INFORMATION. Parts must be ordered from a dealer or distributor. **Hearth and Home Technologies does not sell directly to consumers.** Provide model number and serial number when requesting service parts from your dealer or distributor.



**Stocked
at Depot**

ITEM	DESCRIPTION	COMMENTS	PART NUMBER	
12.1	Pilot Hood		SRV2269-123-BK	
12.2	Pilot Assembly NG		SRV2090-012	Y
	Pilot Assembly LP		2090-013	Y
12.3	Orifice NG (#42C)		582-842	Y
	Orifice LP (.057C)		582-057	Y
12.4	Valve Bracket		SRV2269-153	
12.5	Valve NG		SRV593-500	Y
	Valve LP		SRV593-501	Y
12.6	Male Connector	Pkg of 5	303-315/5	Y
12.7	Module Wire Assembly		SRV593-590	Y
12.8	Thermostat Wire Assembly		SRV2118-170	Y
12.9	Flex Ball Valve Assembly		531-320A	Y
12.10	3 Volt Transformer		SRV593-593	Y
12.11	Battery Pack		SRV593-594	Y
12.12	Module		SRV593-592	Y
12.13	Bulkhead W/Flex Tube		383-302A	Y
12.14	Grommet		SRV2118-420	
12.15	Pilot Bracket		SRV2292-127-BK	

Additional service part numbers appear on following page.



Beginning Manufacturing Date: June 2016
Ending Manufacturing Date: Nov 2017

[illegible]