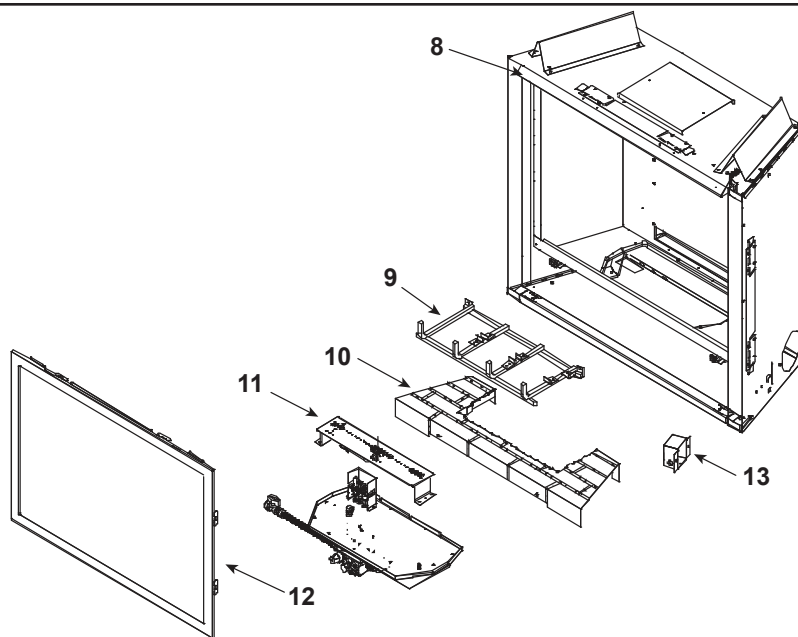
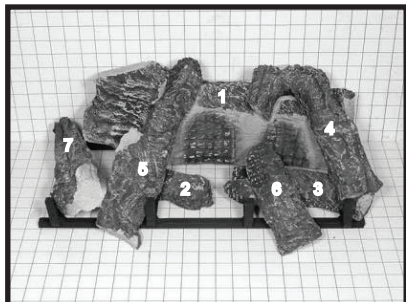


Log Set Assembly



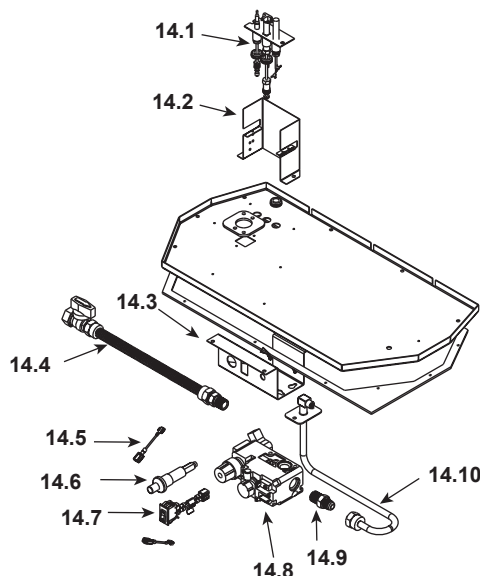
IMPORTANT: THIS IS DATED INFORMATION. Parts must be ordered from a dealer or distributor. **Hearth and Home Technologies does not sell directly to consumers.** Provide model number and serial number when requesting service parts from your dealer or distributor.



**Stocked
at Depot**

ITEM	DESCRIPTION	COMMENTS	PART NUMBER	
	Log Set Assembly	No longer available	LOGS-R45	
1	Log #1	No longer available	SRV536-711	
2	Log #2	No longer available	SRV536-705	
3	Log #3	No longer available	SRV536-706	
4	Log #4	No longer available	SRV536-704	
5	Log #5	No longer available	SRV536-718	
6	Log #6	No longer available	SRV459-710	
7	Log #7	No longer available	SRV446-714	
8	Hood		SRV60-143-BK	
9	Grate Assembly	No longer available	536-362A	
10	Refractory, Base	No longer available	537-124	
11	Burner Assembly NG	No longer available	557-231A	
	Burner Assembly LP	No longer available	536-233A	
12	Glass Door Assembly		GLA-750TR	Y
13	Junction Box		100-250A	Y
	Baffle		530-299	
	Fan Kit		GFK-160A	
	when replacing fan kit, a 3-prong adaptor may be purchased from a hardware store			
	Glass Latch Support Assembly	Pkg of 2	386-122A/2	Y
	Louver Kit, Black	No longer available	BLK-45	
	Louver Kit, Deluxe	No longer available	DLX-45	
	Mineral Wool		050-721	

#14 Valve Assembly



IMPORTANT: THIS IS DATED INFORMATION. Parts must be ordered from a dealer or distributor. **Hearth and Home Technologies does not sell directly to consumers.** Provide model number and serial number when requesting service parts from your dealer or distributor.



**Stocked
at Depot**

ITEM	DESCRIPTION	COMMENTS	PART NUMBER	
14.1	Pilot Assembly NG		4021-736	Y
	Pilot Assembly LP		4021-737	Y
	Pilot Tube		SRV485-301	Y
	Thermocouple		446-511	Y
	Thermopile		2103-512	Y
14.2	Pilot Bracket	No longer available	530-164	
14.3	Valve Bracket	No longer available	550-169	
14.4	Flex Ball Valve Assembly		SRV302-320	Y
14.5	Wire Assembly		049-552A	Y
14.6	Piezo Ignitor		SRV14D0503	Y
14.7	On/Off Rocker Switch		060-521A	Y
14.8	Valve NG		060-522	Y
	Valve LP		060-523	Y
14.9	Male Connector	Pkg of 5	303-315/5	Y
14.10	Flex Tube Assembly		567-301A	Y
	Orifice NG (#42C)		582-842	Y
	Orifice LP (#53C)		582-853	Y
	Conversion Kit NG	No longer available	NGK-4500TRC	
	Conversion Kit LP	No longer available	LPK-4500C	
	Pilot Orifice NG		SRV446-505	Y
	Pilot Orifice LP		SRV446-517	Y
	Regulator NG		SRV060-518	Y
	Regulator LP		060-519	Y