

Part number list on following pages.

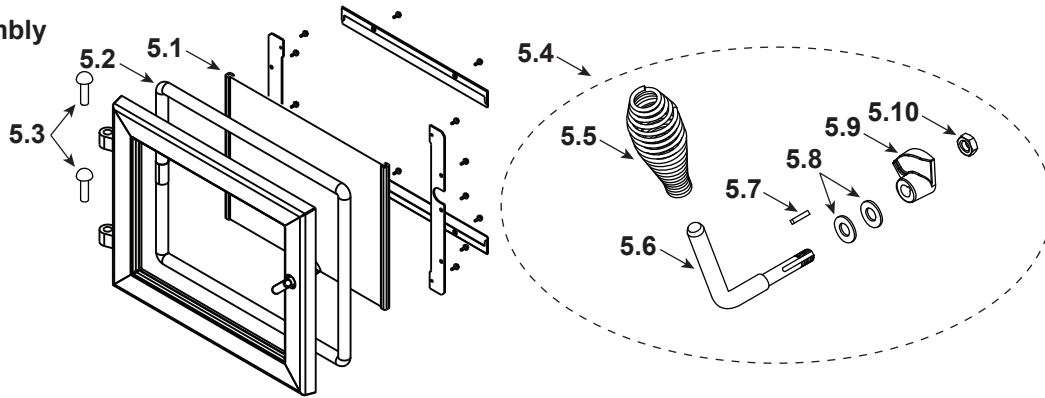
IMPORTANT: THIS IS DATED INFORMATION. Parts must be ordered from a dealer or distributor. **Hearth and Home Technologies does not sell directly to consumers.** Provide model number and serial number when requesting service parts from your dealer or distributor.



**Stocked
at Depot**

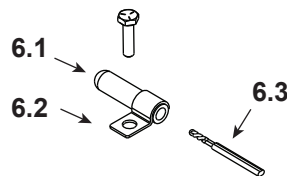
| Item | Description | Comments | Part Number | Stocked at Depot |
|------|---------------------|----------|-------------|------------------|
| 1 | Hopper Lid Assembly | | SRV7058-009 | |
| 2 | Handle, Hopper Lid | | SRV200-0110 | |
| 3 | Side Curtain, Left | | SRV7058-125 | |
| 4 | Baffle Assembly | | SRV7058-026 | Y |

#5 Door Assembly



| | | | | |
|------|---------------------------------|-----------|--------------|---|
| 5 | Door Assembly | | SRV7058-014 | |
| 5.1 | Glass Assembly | | SRV7058-015 | Y |
| 5.2 | Rope, Door, 3/4" X 84" | | 832-1680 | Y |
| | Corner Tape | 1 Ft | SRV560-437-9 | |
| | Gasket, Glass Tape, 3/4" X 1/8" | 5 Ft | 832-0460 | Y |
| 5.3 | Hinge Pin, 1/2" | Nickel | SRV430-5320 | |
| 5.4 | Door Handle Assembly | | SRV7058-030 | Y |
| 5.5 | Spring Handle, 1/2" | Black | 250-8330 | Y |
| 5.6 | Handle, Formed Door | | SRV7058-182 | |
| 5.7 | Key Latch, Cam | | SRV430-1151 | |
| 5.8 | Washer, SAE, 3/8 (Qty 2 req) | Pkg of 3 | 832-0990 | Y |
| 5.9 | Cam Latch | | SRV430-1141 | |
| 5.10 | Nut, 2-Way Side-Lock Jam | Pkg of 24 | 226-0100/24 | Y |

#6 Thermocouple Assembly



| | | | | |
|-----|------------------------------|-----------|----------------|---|
| 6.1 | Thermocouple Protection Tube | | SRV7034-186 | Y |
| | | Pkg of 10 | SRV7034-186/10 | |
| 6.2 | Half Clip | | 7000-321 | |
| 6.3 | Thermocouple | | 812-4470 | Y |

Additional service parts on following page

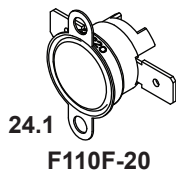
IMPORTANT: THIS IS DATED INFORMATION. Parts must be ordered from a dealer or distributor. **Hearth and Home Technologies does not sell directly to consumers.** Provide model number and serial number when requesting service parts from your dealer or distributor.



**Stocked
at Depot**

| Item | Description | Comments | Part Number | |
|------|---|-----------|----------------|---|
| 7 | Firepot Assembly | | SRV7034-072B | Y |
| | Gasket, Firepot | | SRV7034-190 | Y |
| 8 | Firepot Bottom | | SRV7034-153 | Y |
| 9 | Rail, Auto-Clean | | SRV7034-152 | Y |
| 10 | Spring | Pkg of 4 | 7000-513/4 | Y |
| 11 | Hitch Pin Clip 3/32 | Pkg of 10 | 7000-374/10 | Y |
| 12 | Pull Rod | | SRV7058-141 | |
| 13 | Heating Element Assembly 18" (Loop Igniter) | Pkg of 1 | SRV7000-462 | Y |
| | | Pkg of 10 | SRV7000-462/10 | Y |
| 14 | Ash Pan Assembly | | SRV7058-013 | |
| 15 | Pedestal Side | Qty 2 req | SRV7058-153 | |
| 16 | Blower, Convection | | 812-4900 | Y |
| 17 | Wire Harness | | SRV7058-150 | Y |
| | Fuse, 7 Amp, Junction Box | Pkg of 10 | 812-0380/10 | Y |
| | Reset Button Assembly | | SRV7000-040 | |
| 18 | Blower Retainer | | SRV7058-148 | |
| 19 | Control Board 3 Speed | | SRV7058-188 | Y |
| 20 | Latch Backing Plate | | SRV7058-155 | |
| 21 | Blower, Exhaust Combustion | | 812-4400 | Y |
| 22 | Gasket, Exhaust Combustion Blower | | SRV240-0812 | Y |
| | Gasket, Combustion Blower, Round | | 812-4710 | Y |
| 23 | Casting, Exhaust Transition | | 180-0190 | |

Snap Disc's



| | | | | |
|------|-------------------------------|-------|-------------|---|
| 24 | Snap discs | | | |
| 24.1 | Snap Disc, 110-20 (#1) | Right | SRV230-1220 | Y |
| 24.2 | Snap Disc Manual Reset (#2) | Left | SRV230-1960 | Y |
| 25 | Feed Assembly | | SRV7058-007 | Y |
| | Feed Bearing | | SRV7000-598 | Y |
| | Feed Motor | | 812-4421 | Y |
| | Feed Spring Assembly (Only) | | SRV7001-046 | Y |
| | Gasket, Feed Motor | | SRV7034-144 | |
| 26 | Snap Disc (#3) | | SRV230-1290 | Y |

Additional service parts on following page.

