



Service Parts

PPC90/TSC90

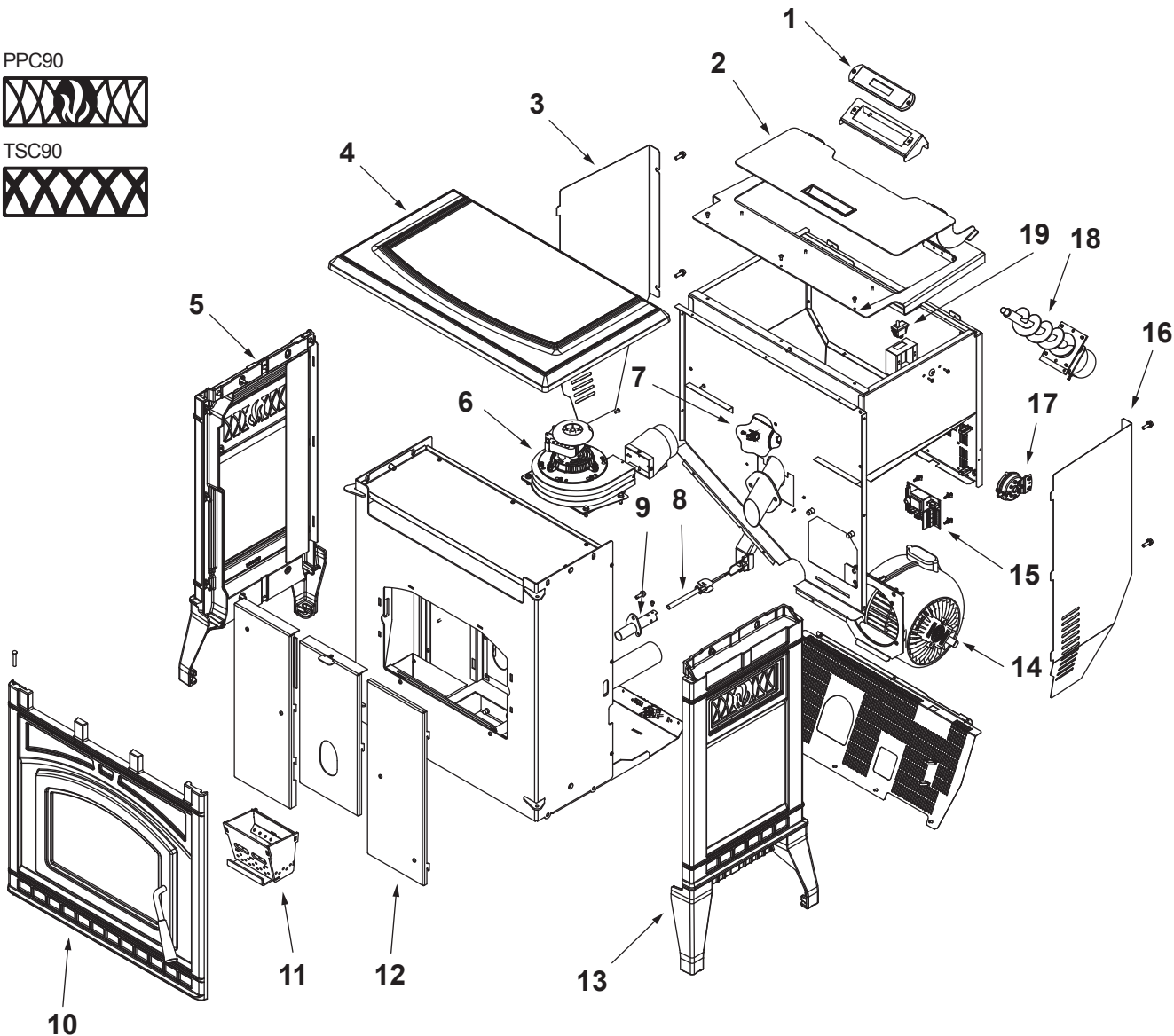
Beginning Manufacturing Date: July 2016
Ending Manufacturing Date: Active

PPC90 Ending Manufacturing Date: May 2021
Serial #HF1878154

PPC90



TSC90



Part number list on following page.



Service Parts

PPC90/TSC90

Pellet Stove

Beginning Manufacturing Date: July 2016
Ending Manufacturing Date: Active

IMPORTANT: THIS IS DATED INFORMATION. When requesting service or replacement parts for your appliance please provide model number and serial number.



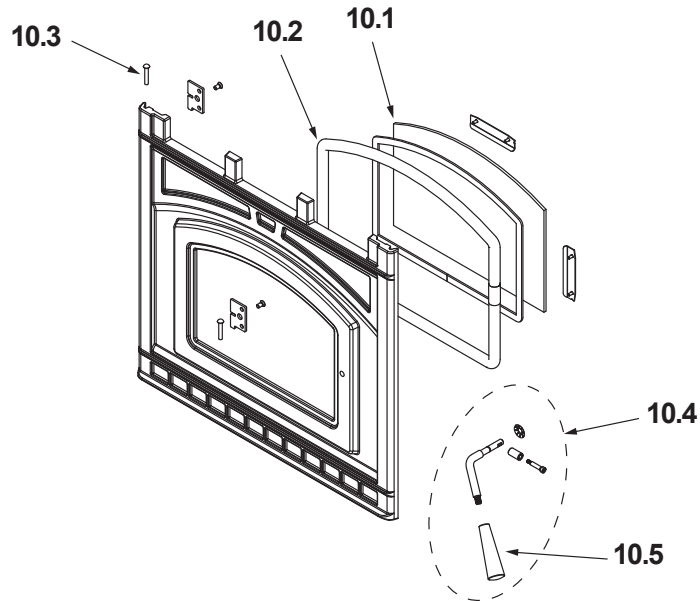
**Stocked
at Depot**

ITEM	DESCRIPTION	COMMENTS	PART NUMBER	
1	Digital Control	Includes cable	SRV7093-036	Y
2	Hopper Lid Assembly		SRV7093-019-1	
3	Side Curtain, Left Hand		SRV7093-154	
4	Cast Top		7093-201MBK	
5	Cast Side Assembly, Left Hand	PPC90	7093-046-1MBK	
		TSC90	7093-046-3MBK	
6	Exhaust Combustion Blower		812-4400	Y
	Gasket, Between Blower Housing and Motor		812-4710	Y
	Gasket, Between Blower Housing and Stove		SRV240-0812	Y
7	Snap Disc Manual Reset		SRV230-0080	Y
8	Igniter Kit		SRV7000-660	
9	Igniter Chamber Kit		SRV7077-110	
10	Face Assembly		See following Pages	
11	Firepot		SRV7077-003	
12	Baffle Kit		SRV7077-006	
13	Cast Side Assembly, Right Hand	PPC90	7093-045-1MBK	
		TSC90	7093-045-3MBK	
14	Convection Blower		KS-5020-1052	
	Convection Blower Brakcet		SRV7081-210	
	Convection Blower Gasket		SRV7081-195	
15	Control Board**		SRV7093-051	Y
	Wire Harness		SRV7093-184	Y
16	Side Curtain, Right Hand		SRV7093-153	
17	Vacuum Switch		SRV7000-531	Y
18	Feed Assembly Kit		See following Pages	
19	Hopper Switch		SRV7000-612	Y
	Ambiant Probe		SRV7000-668	
	Ash Bucket Assembly	Pkg of 2	SRV7093-034	
	Component Pack		SRV7093-028-1	
	Exhaust Probe		SRV7000-669	
	Hose, Barb Assembly		SRV229-0920	
	Hose, Vacuum, 5/32 Id	3 Ft	SRV240-0450	Y
	Wire Clip	Pkg of 10	7000-400/10	Y
	Wire Harness		SRV7093-184	
	Wire Harness Thermostat Block		SRV7080-152	

**Fuse for the control board can be sourced locally, not a warranty item. Specs are 250V, 5A fuse, 20mm long x 5mm dia.

See Following page for additional servcie parts

#10 Door Assembly

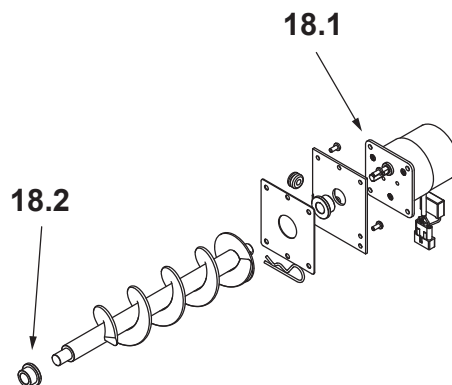


IMPORTANT: THIS IS DATED INFORMATION. When requesting service or replacement parts for your appliance please provide model number and serial number.

**Stocked
at Depot**

ITEM	DESCRIPTION	COMMENTS	PART NUMBER	
10	Face Assembly		7093-041-1MBK	
10.1	Glass Assembly		SRV7093-023	Y
10.2	Rope, Door, 3/4" x 84"		832-1680	Y
10.3	Hinge Pin	Pkg of 2	433-1590/2	
10.4	Door Handle Kit	Includes Black Handle	SRV7093-024D	Y
10.5	Handle, Black Phenolic Kit		KS-5140-1442	Y

#18 Feeder Assembly



18	Feed Assembly Kit		SRV7077-014	Y
18.1	Feed Motor		SRV7000-670	Y
18.2	Feed Shaft Bushing	Pkg of 2	7000-600/2	