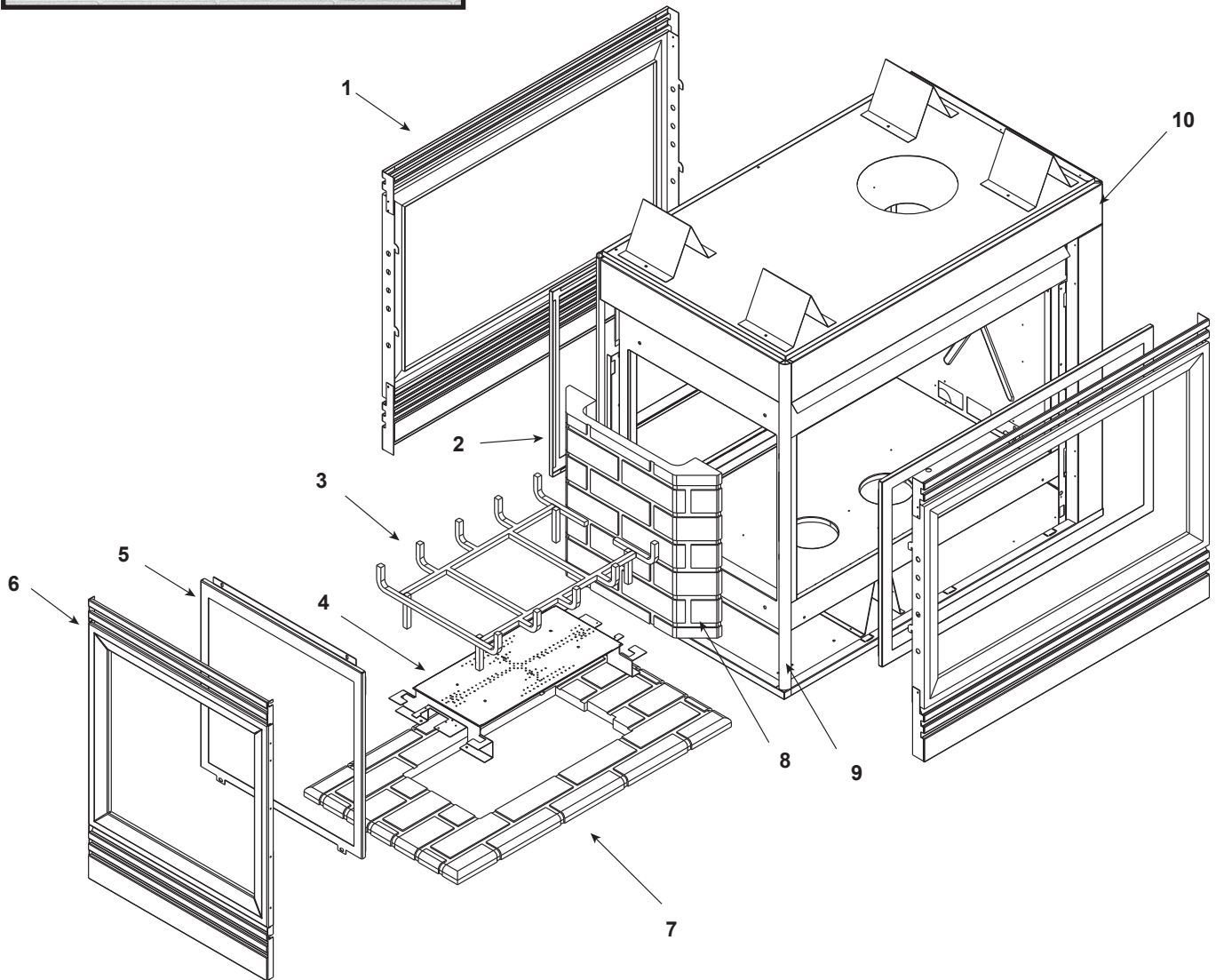
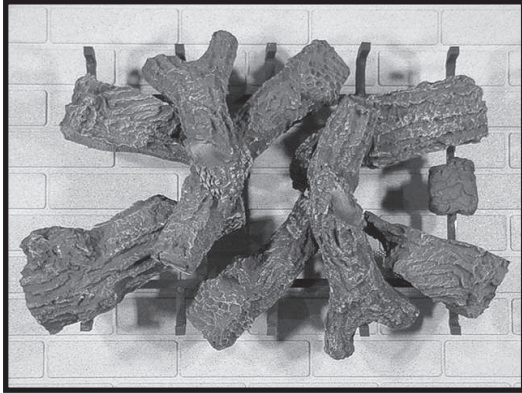


Log Set Assembly



Part number list on following page.



Service Parts

PIER-TRC, PIER-TRC-DSI, PIER-TRC-IPI

No one builds a better fire

Beginning Manufacturing Date: June 1997
 DSI Ending Manufacturing Date: Aug 2002
 SP & IPI Ending Manufacturing Date: Sept 2003

IMPORTANT: THIS IS DATED INFORMATION. Parts must be ordered from a dealer or distributor. **Hearth and Home Technologies does not sell directly to consumers.** Provide model number and serial number when requesting service parts from your dealer or distributor.



Stocked at Depot

ITEM	DESCRIPTION	COMMENTS	PART NUMBER	Stocked at Depot
	Log Set Assembly NG	Pre 18287	LOGS-PTRC	Y
		Post 18287	LOGS-MS	Y
	Log Set Assembly LP	Pre 3984	LOGS-PTRC	Y
		Post 3984	LOGS-MS	Y
1	Decorative Front	No longer available	DF-36H	
2	Glass Door Assembly, Side (Three Top Tabs)	No longer available	GLA-PTR	
	Glass Door Assembly NG	No longer available	GLA-PTRC	
		Post 8865	GLA-PIER	Y
	Glass Door Assembly LP	No longer available	GLA-PTRC	
Post 2301		GLA-PIER	Y	
3	Grate Assembly	No longer available	674-364	
4	Burner NG	Pre 16919	SRV501-176A	Y
		16919 to 18287	501-173A	Y
		Post 18287	501-272A	Y
	Burner LP	Pre 3666	SRV501-175A	Y
		3666 to 3984	501-172A	Y
		Post 3984	501-273A	Y
5	Glass Door Assembly, End	No longer available	GLA-PTRC-E	
6	Decorative Front End	No longer available	DF-PTRCE	
7	Base Refractory	No longer available	SRV504-738-UM	
9	Extrusion with Holes	No longer available	464-343	
8	Refractory End	No longer available	SRV504-737-UM	
10	Surround Side right	No longer available	501-233	
	Surround Side left	No longer available	501-232	
	Burner Orifice NG (#30B)	Pre 3102	064-800	Y
	Burner Orifice NG (32B)	No longer available	573-800	
	Burner Orifice LP (#49B)	Pre 1473	047-801	Y
	Burner Orifice LP (1.8MM B)	No longer available	501-801	
	Burner Tube	No longer available	SRV501-302	
	Fan Kit		GFK-160A	
	Flex Ball Valve Assembly		SRV302-320	Y
	Glass Clip	No longer available	501-135	
	Junction Box	Standing Pilot	100-250A	Y
		No longer available	100-254A	
		IPI	383-250A	Y
	On/Off, Switch		SRV32D0232	Y
	Remote		SMART-STAT-HHT	
	Touch Up Paint		TUP-GBK-12	

Valve assembly components on following page



Service Parts PIER-TRC, PIER-TRC-DSI, PIER-TRC-IPI

No one builds a better fire

Beginning Manufacturing Date: June 1997
 DSI Ending Manufacturing Date: Aug 2002
 SP & IPI Ending Manufacturing Date: Sept 2003

IMPORTANT: THIS IS DATED INFORMATION. Parts must be ordered from a dealer or distributor. **Hearth and Home Technologies does not sell directly to consumers.** Provide model number and serial number when requesting service parts from your dealer or distributor.



Stocked at Depot

ITEM	DESCRIPTION	SERIAL #	PART NUMBER	
Standing Pilot Ignition				
	Valve NG		060-522	Y
	Valve LP		060-523	Y
	Pilot Assembly NG		4021-736	Y
	Pilot Assembly LP		4021-737	Y
	Thermopile		2103-512	Y
	Thermocouple		446-511	Y
	Pilot Tube		SRV485-301	Y
	Piezo Ignitor		291-513	Y
	Conversion Kit NG	No longer available	NGK-PTRD	
		No longer available	NGK-PTRCMS	
	Conversion Kit LP	No longer available	LPK-PTRD	
		No longer available	LPK-PTRCMS	
	Pilot Orifice NG		SRV446-505	Y
	Pilot Orifice LP		SRV446-517	Y
	Regulator NG		SRV060-518	Y
	Regulator LP		060-519	Y
DSI Igniton				
	Electrode		501-591	Y
	Module	No longer available	501-592	
	Valve NG		492-500	Y
	Valve LP	No longer available	492-501	
	Conversion Kit NG		N/A	
	Conversion Kit LP	No longer available	LPK-PTRCMS-DSI	
IPI Igniton				
	Valve NG		750-500	Y
	Valve LP		750-501	Y
	Pilot Assembly NG		SRV4021-730	Y
	Pilot Assembly LP		SRV4021-731	Y
	Pilot Tube		SRV485-301	Y
	Module Wire Assembly		SRV593-590	Y
	Module		SRV593-592	Y
	Sv Plug		SRV593-593	Y
	Battery Pack		SRV593-594	Y
	Conversion Kit NG		N/A	
	Conversion Kit LP	No longer available	LPK-MS-IPI	
	Pilot Orifice NG		SRV446-505	Y
	Pilot Orifice LP		SRV446-517	Y
	Regulator NG		SRVNGK-DXV	Y
	Regulator LP		SRVLPK-DXV	Y