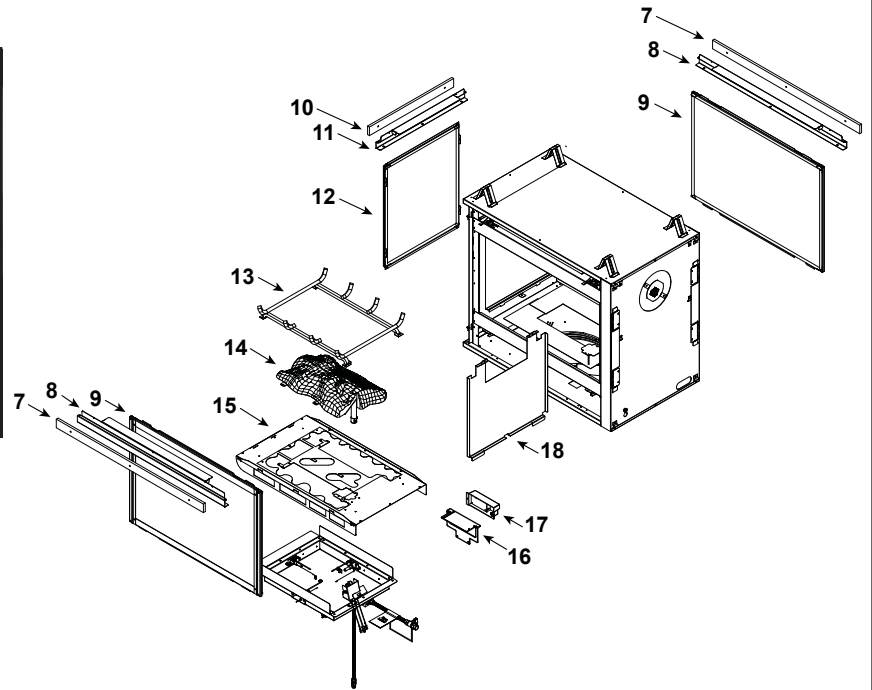
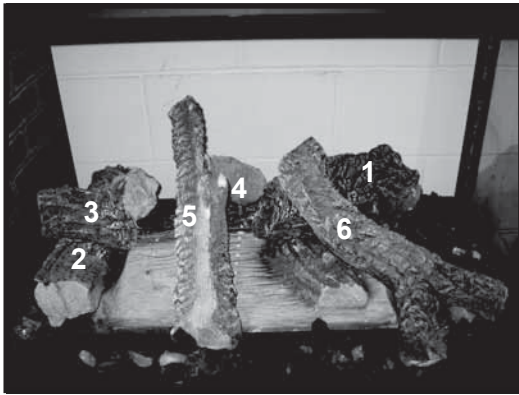


Log Set Assembly

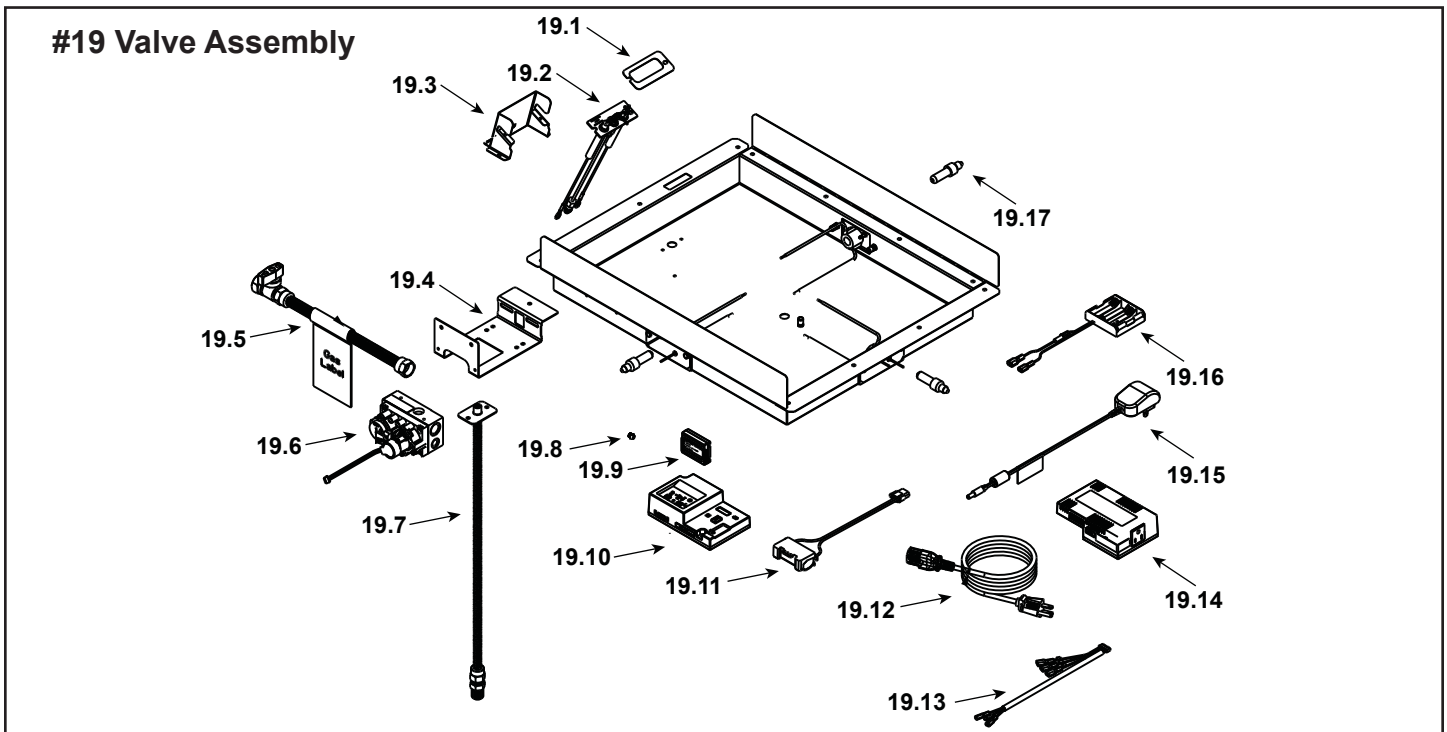


IMPORTANT: THIS IS DATED INFORMATION. Parts must be ordered from a dealer or distributor. **Hearth and Home Technologies does not sell directly to consumers.** Provide model number and serial number when requesting service parts from your dealer or distributor.



**Stocked
at Depot**

ITEM	DESCRIPTION	COMMENTS	PART NUMBER	
	Log Set Assembly		LOGS-MSR	Y
1	Log 1		SRV2005-701	
2	Log 2		SRV2005-700	
3	Log 3		SRV2005-702	
4	Log 4		SRV2005-703	
5	Log 5		SRV2005-704	
6	Log 6		SRV2005-705	
7	Non-Comb, Long	Qty 2 req	2130-199	
8	Sheetrock Ledge (Side)	Qty 2 req	2130-118	
9	Glass Door Assembly	Qty 2 req	GLA-6TROC	Y
10	Non-Comb, Short		2130-197	
11	Sheetrock Ledge (End)		2130-126	
12	Glass Door Assembly (End)		GLA-2130	Y
13	Grate Assembly		2005-012	
14	Burner NG, Propane		2005-006	Y
15	Ember Mesh Assembly		2176-008	
16	Junction Box Bracket		2128-128	
17	Junction Box		SRV4021-013	Y
18	Refractory		2128-116	
	Surround Overlay (contains overlay for top, bottom and sides)		SRV2130-FACE	



IMPORTANT: THIS IS DATED INFORMATION. Parts must be ordered from a dealer or distributor. **Hearth and Home Technologies does not sell directly to consumers.** Provide model number and serial number when requesting service parts from your dealer or distributor.



Stocked at Depot

ITEM	DESCRIPTION	COMMENTS	PART NUMBER	Stocked at Depot
19.1	Wind Baffle		2176-126	
19.2	Pilot Assembly NG		2478-012	Y
	Pilot Assembly Propane	Convert 2478-012 with SRV593-527		Y
19.3	Pilot Bracket		2176-118	
19.4	Valve Bracket		2482-120	
19.5	Flex Ball Valve Assembly		SRV302-320	Y
19.6	Valve NG		2166-302	Y
	Valve Propane		2166-303	Y
19.7	Flexible Gas Connector		2005-009	Y
19.8	Orifice NG (#32C)		SRV582-832	Y
	Orifice Propane (#50C)		582-850	Y
19.9	Module, RF FCC		2326-120	Y
19.10	Module, IFT Control		2326-130	
19.11	Connector Block Assembly		2482-019	Y
19.12	Cable, B Type AC Module		SRV2326-152	Y
19.13	Harness, IFT 6 Pin Wiring		SRV2326-132	Y
19.14	Module, B Type AC		2326-150	Y
19.15	Transformer, 6 Volt Wall		SRV2326-131	Y
19.16	Battery Pack **		SRV2326-134	Y
19.17	Bulb, Halogen		700-542	Y

**Fuse for battery pack can be sourced locally, not a warranty item. Specs are 250v, 3A fuse, 3/4" long

Additional service part numbers appear on following page.

