

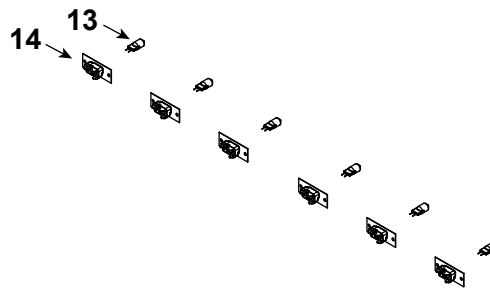
IMPORTANT: THIS IS DATED INFORMATION. Parts must be ordered from a dealer or distributor. **Hearth and Home Technologies does not sell directly to consumers.** Provide model number and serial number when requesting service parts from your dealer or distributor.



Stocked at Depot

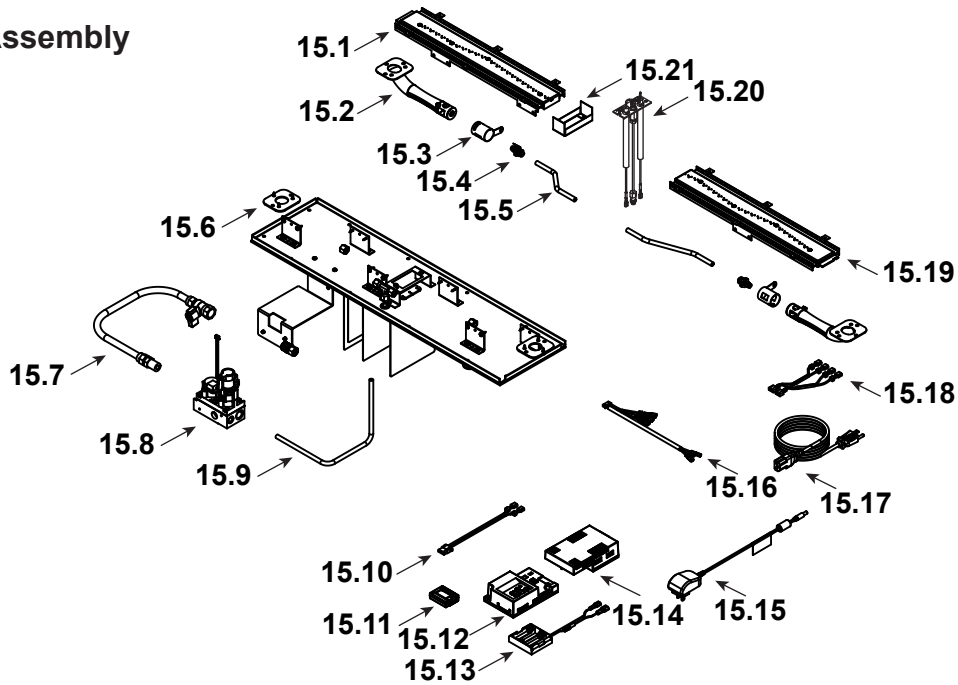
ITEM	DESCRIPTION	COMMENTS	PART NUMBER	
1	Hearth Plate Assembly	Qty 2 req	SRV4601-014	
2	Glass Door Assembly	Qty 2 req	SRV4601-019	Y
3	Screen Barrier Assembly		SRV4601-017	Y
4	Face Top Board		SRV4601-301	Y
5	Silicone Gasket (0.5" x 42.5")	Qty 2 req	SRV4601-137	
6	Silicone Gasket (0.5" x 19.5")	Qty 2 req	SRV4601-138	
7	Inner Frame Weld Assembly		SRV4601-010	
8	Outer Glass Assembly		SRV4601-018	Y
9	Cover, Glass		SRV4601-159	
10	Lip		78D2068	
11	SS Barrier Screen Assembly		SRV4601-015	Y
12	Rain Shield Assembly		SRV4601-026	Y

Halogen Bulb Assembly



13	Halogen Bulb, 15 Watt	Qty 12 req	SRV4601-155	Y
14	Bulb Socket	Qty 12 req	SRV73D4521	

#15 Valve Assembly



IMPORTANT: THIS IS DATED INFORMATION. Parts must be ordered from a dealer or distributor. **Hearth and Home Technologies does not sell directly to consumers.** Provide model number and serial number when requesting service parts from your dealer or distributor.



Stocked at Depot

ITEM	DESCRIPTION	COMMENTS	PART NUMBER	Stocked at Depot
15.1	Burner Assembly Left		78D2038	Y
15.2	Venturi	Qty 2 req	SRV69D1026	Y
15.3	Air Shutter	Qty 2 req	SRV69D1027	Y
15.4	Injector	Qty 2 req	SRV59D0062	Y
15.5	Tube, Tee to Injector	Qty 2 req	78D0090	Y
15.6	Gasket, Venturi DV	Qty 2 req	SRV45D0032	Y
15.7	Flexline, 18" with Shutoff Valve		SRV69D0030	Y
15.8	Gas Valve		2166-302	Y
15.9	Tube, Tee to Valve		78D2045	Y
15.10	Light Harness		SRV4601-201	Y
15.11	Module, RF FCC		2326-120	Y
15.12	Module, IFT Control		SRV2326-130	Y
15.13	**Battery Pack		SRV2326-134	Y
15.14	AUX Module, B Type		2326-150	Y
15.15	Transformer, 6 Volt Wall		SRV2326-131	Y
15.16	Wire Harness		SRV2326-132	Y
15.17	Cable, B Type AC Module		SRV2326-152	Y
15.18	Wire Harness, Light Join		SRV78D1077	Y
15.19	Burner Assembly Right		78D2035	Y
15.20	Pilot Assembly		SRV4602-300	Y
15.21	Pilot Shield		78D2079	

**Fuse for battery pack can be sourced locally, not a warranty item. Specs are 250v, 3A fuse, 3/4" long

Additional service part numbers appear on following page.

IMPORTANT: THIS IS DATED INFORMATION. Parts must be ordered from a dealer or distributor. **Hearth and Home Technologies does not sell directly to consumers.** Provide model number and serial number when requesting service parts from your dealer or distributor.



**Stocked
at Depot**

ITEM	DESCRIPTION	COMMENTS	PART NUMBER	
	Black Magic Glass Kit	No longer available	ODMEZG36-BGK	
	Fireplace Surround	No longer available	ODMEZG36-FB	
	Fireplace Trim Kit		ODMEZG36-CFT	
	Remote, RC400		SRV2326-110	
Media Options				
	Media Kit, Amber	3 Bags Max	MEDIA-AMBER-36	
	Amber Rock	5 lb. Bag	2188-853	
	Media Kit, Clear	3 Bags Max	MEDIA-CLEAR-36	
	Crystal Rock	5 lb. Bag	2188-851	
	Media Kit, Cobalt	3 Bags Max	MEDIA-COBALT-36	
	Cobalt Rock	5 lb. Bag	2188-852	
	Media Kit, Ebony	3 Bags Max	MEDIA-EBONY-36	
	Black Rock	5 lb. Bag	2188-850	
	Media Kit, Red	3 Bags Max	MEDIA-RED-36	
	Red Rock	5 lb. Bag	2188-854	
	Stones	May use up to 3 bags	STONES-NATURAL	
Conversion Kits				
	Conversion Kit NG		N/A	
	Conversion Kit LP		LPK-ODMEZG-36	Y
	Pilot Orifice, LP		SRV4602-301	Y
	Regulator, LP		SRVLPK-DXV-50	Y