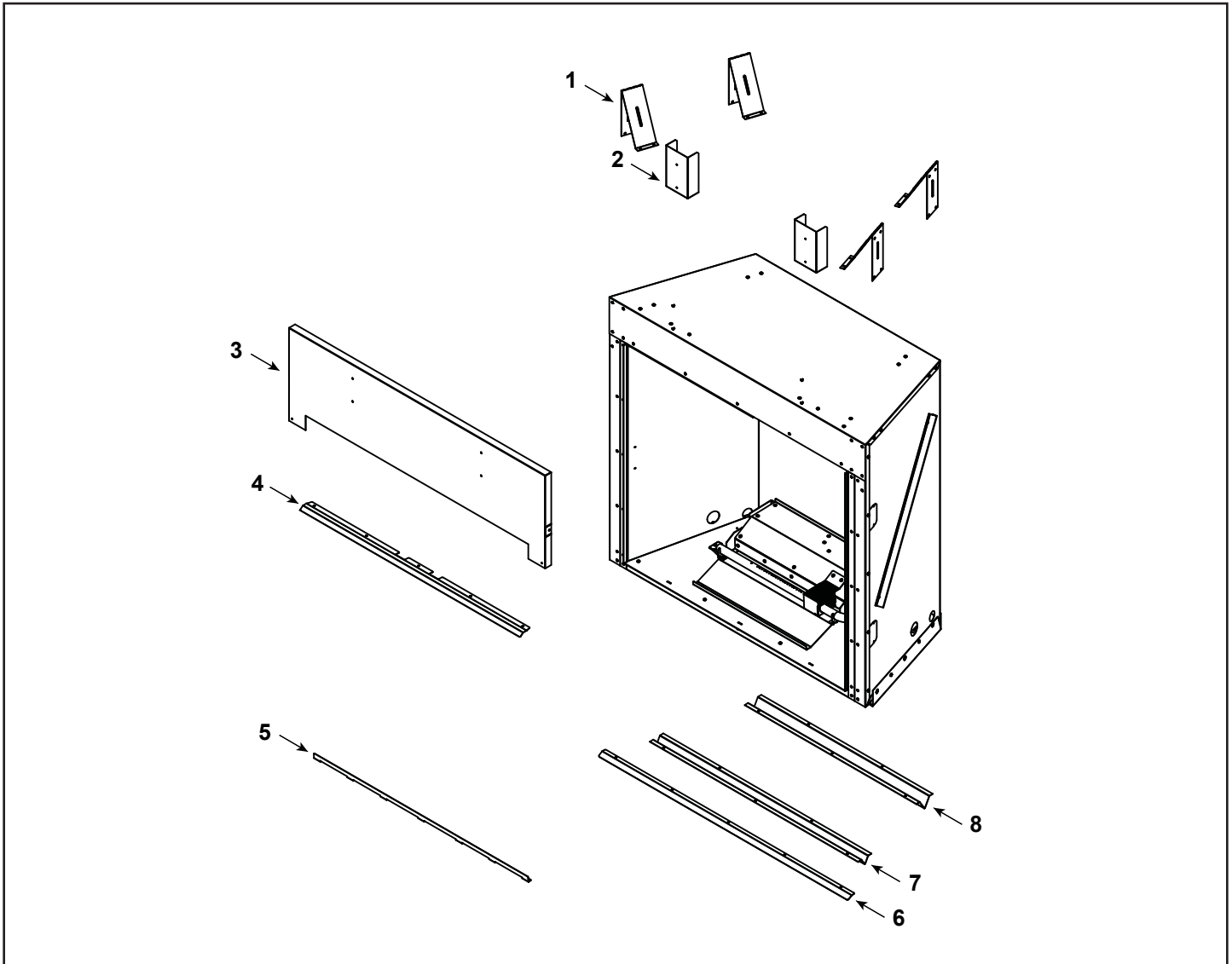


ODCOUG-36T

ODCOUG-36PT

ODCOUG-36PH



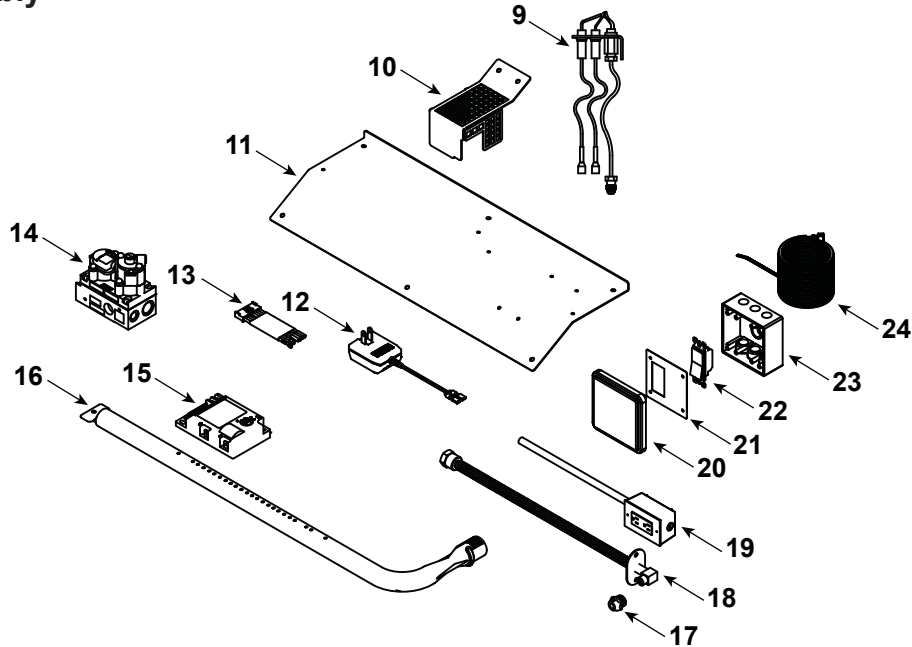
**IMPORTANT: THIS IS DATED INFORMATION.** Parts must be ordered from a dealer or distributor. **Hearth and Home Technologies does not sell directly to consumers.** Provide model number and serial number when requesting service parts from your dealer or distributor.



**Stocked at Depot**

ITEM	DESCRIPTION	COMMENTS	PART NUMBER
1	Mounting Bracket	Qty 2 req	SRV4608-149
2	Standoff, Tall	Qty 4 req	SRV4090-511
3	Rain Shield		SRV4608-129
4	Eyebrow		SRV4608-110
5	Drain Lip		SRV4608-120
6	Media Lip		SRV4608-122
7	Standoff, Bottom Front		SRV4608-121
8	Standoff, Bottom Rear		SRV4608-111

**Valve Assembly**



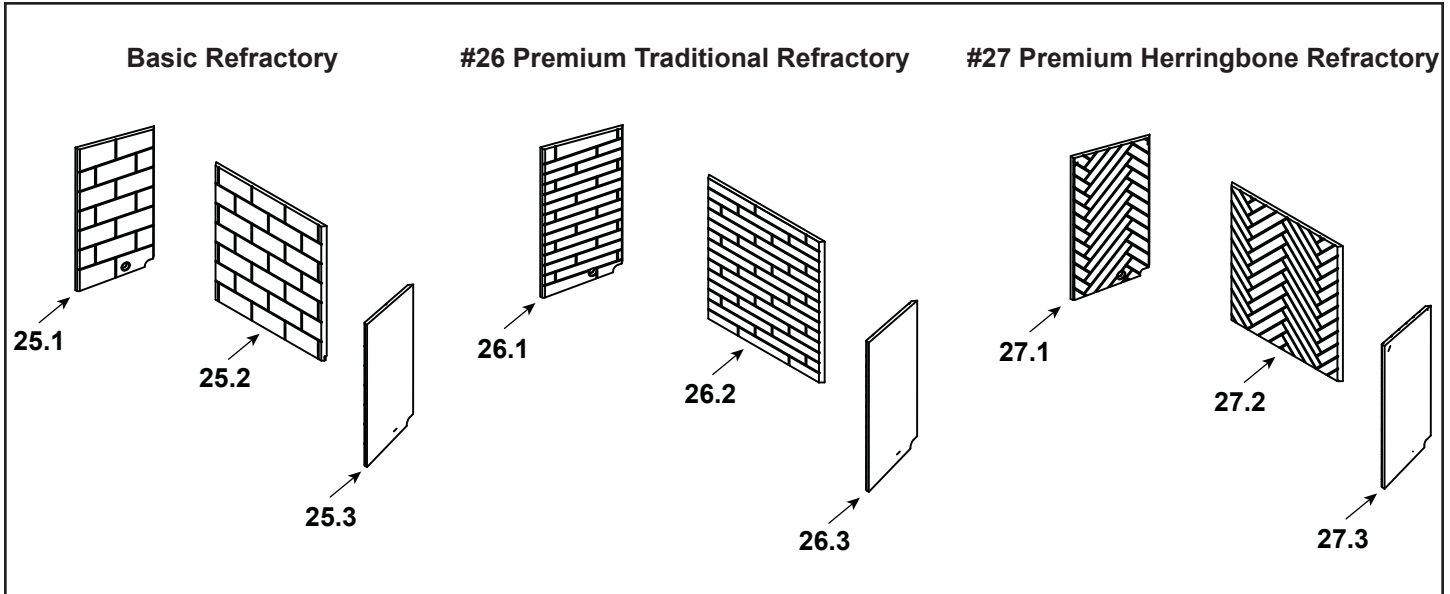
IMPORTANT: THIS IS DATED INFORMATION. Parts must be ordered from a dealer or distributor. **Hearth and Home Technologies does not sell directly to consumers.** Provide model number and serial number when requesting service parts from your dealer or distributor.



**Stocked at Depot**

ITEM	DESCRIPTION	COMMENTS	PART NUMBER	
9	Pilot		SRV593-512	Y
10	Pilot Shield		SRV4608-125	
11	Control Cover Plate		SRV4608-118	
12	Transformer, 3V		SRV593-593	Y
13	Wire Assembly		SRV593-590	Y
14	Valve Assembly		593-500	Y
15	Control Module		SRV593-592	Y
16	Burner Tube		SRV4608-302	Y
17	Orifice, Burner		SRV4608-305	Y
18	Bulkhead w/Flextube		2166-119	Y
19	OD Outlet w/Harness		SRV4608-304	Y
20	Receptacle Cover		20308585K	
21	Mounting Plate		SRV4608-127	
22	Rocker Switch		20304686K	Y
23	Outdoor Outlet Box		20308584K	
24	SCS Wall Switch Wire		20308590K	Y
	Flexline 18" w/Shutoff		SRV69D0030	Y

Additional service part numbers appear on following page.



**IMPORTANT: THIS IS DATED INFORMATION.** Parts must be ordered from a dealer or distributor. **Hearth and Home Technologies does not sell directly to consumers.** Provide model number and serial number when requesting service parts from your dealer or distributor.



**Stocked at Depot**

ITEM	DESCRIPTION	COMMENTS	PART NUMBER	
25.1	Refractory Left, Basic		SRV4608-701	
25.2	Refractory Back, Basic		SRV4608-700	
25.3	Refractory Right, Basic		SRV4608-702	
26	Refractory Assembly, Premium Traditional		FBPREMT36	
26.1	Refractory Left, Premium Traditional		SRV4608-311	
26.2	Refractory Back, Premium Traditional		SRV4608-310	
26.3	Refractory Right, Premium Traditional		SRV4608-312	
27	Refractory Assembly, Premium Herringbone		FBPREMH36	
27.1	Refractory Left, Premium Herringbone		SRV4608-316	
27.2	Refractory Back, Premium Herringbone		SRV4608-315	
27.3	Refractory Right, Premium Herringbone		SRV4608-317	
<b>Conversion Kit</b>				
	LP Conversion Kit		LPK-ODCOUG	Y
	Orific, #45C		582-845	Y
	Pilot Orifice, LP		SRV593-527	Y
	Regulator, LP		SRVLPK-DXF	Y
	Regulator, NG		SRVNGK-DXF	Y