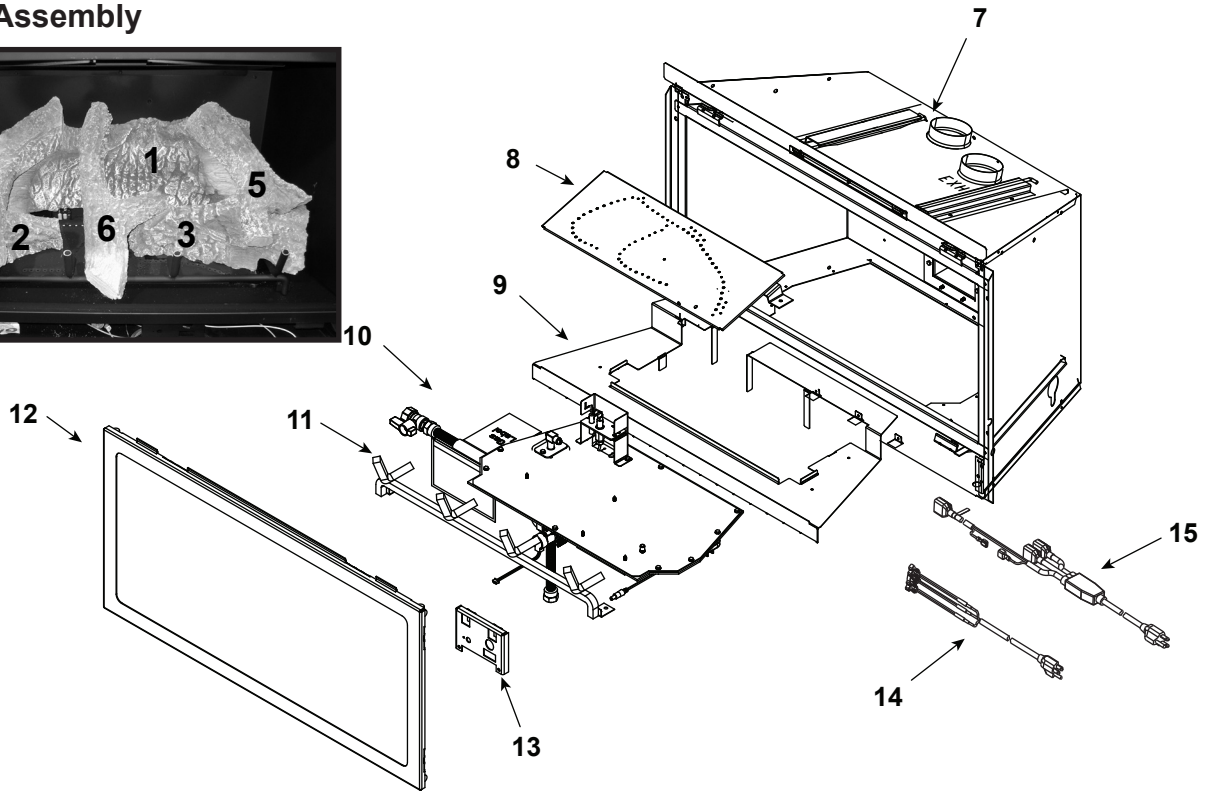
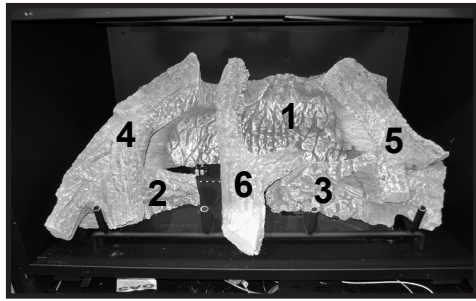


Log Set Assembly



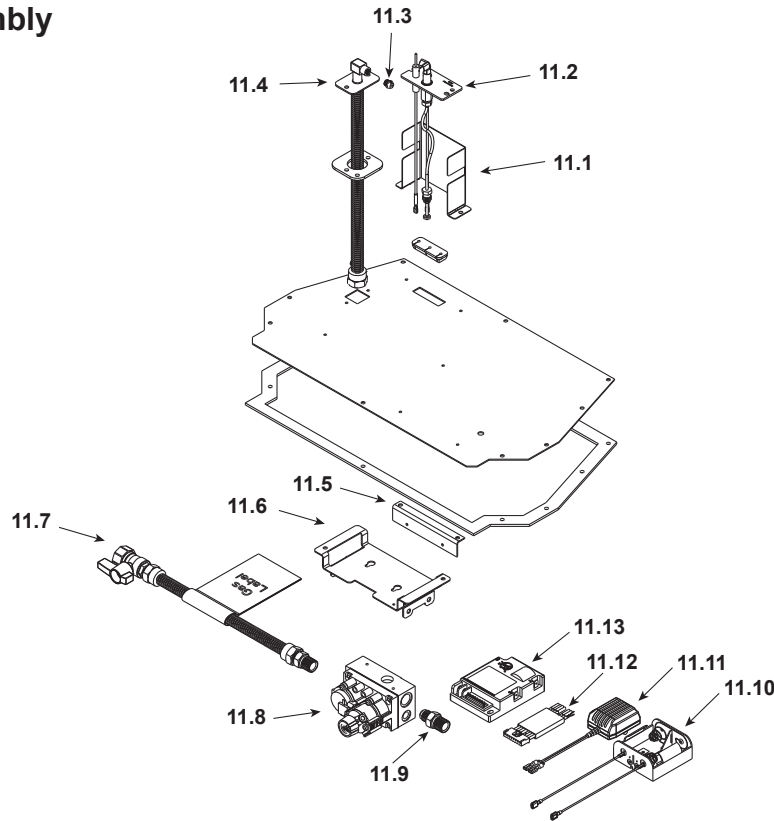
IMPORTANT: THIS IS DATED INFORMATION. When requesting service or replacement parts for your appliance please provide model number and serial number. All parts listed in this manual may be ordered from an authorized dealer.



Stocked at Depot

ITEM	DESCRIPTION	COMMENTS	PART NUMBER	
	Log Assembly		LOGS-NDI35	Y
1	Log 1	No longer available, Must order complete assembly	SRV2224-701	
2	Log 2		SRV2224-706	
3	Log 3		SRV2224-702	
4	Log 4		SRV2224-703	
5	Log 5		SRV2224-704	
6	Log 6		SRV2224-705	
7	Fireplace Termination Assembly		2205-012	
	Flex Pipe Handle		438-351	
	Gasket		2206-401	
8	Burner Assembly		SRV2224-007-BK	Y
9	Base Pan	No Longer Available	2205-106	
10	Valve Assembly		Refer to valve page.	
11	Grate Assembly		SRV2224-016-BK	
12	Glass Door Assembly		GLA-2205	Y
13	Control Panel		SRV2205-129-BK	
14	Cord Assembly		2226-017	Y
15	Wire Assembly		2206-068	Y

#10 Valve Assembly



IMPORTANT: THIS IS DATED INFORMATION. When requesting service or replacement parts for your appliance please provide model number and serial number. All parts listed in this manual may be ordered from an authorized dealer.



Stocked at Depot

ITEM	DESCRIPTION	COMMENTS	PART NUMBER	
10.1	*Pilot Bracket	Call Tech Service with Serial number		
10.2	*Pilot Assembly NG		Call Tech Service with Serial number	
	*Pilot Assembly LP			
10.3	Orifice NG (#33C)		582-833	Y
	Orifice LP (#50C)		582-850	Y
10.4	18" Flex Tube Assembly		530-302A	Y
10.5	Bracket		SRV2205-128	
10.6	Valve Bracket		SRV2205-146	
10.7	Flex Ball Valve Assembly		SRV302-320	Y
10.8	Valve NG		750-500	Y
	Valve LP		750-501	Y
10.9	Brass Connector	Pkg of 5	303-315/5	Y
10.10	Battery Pack		SRV593-594	Y
10.11	Wire Harness		SRV593-590	Y
10.12	Power Supply		SRV593-593	Y
10.13	Module		SRV593-592	Y

*Call Tech Service with serial number for correct conversion and/or possible upgrade pilot kit

Additional service part numbers appear on following page.

