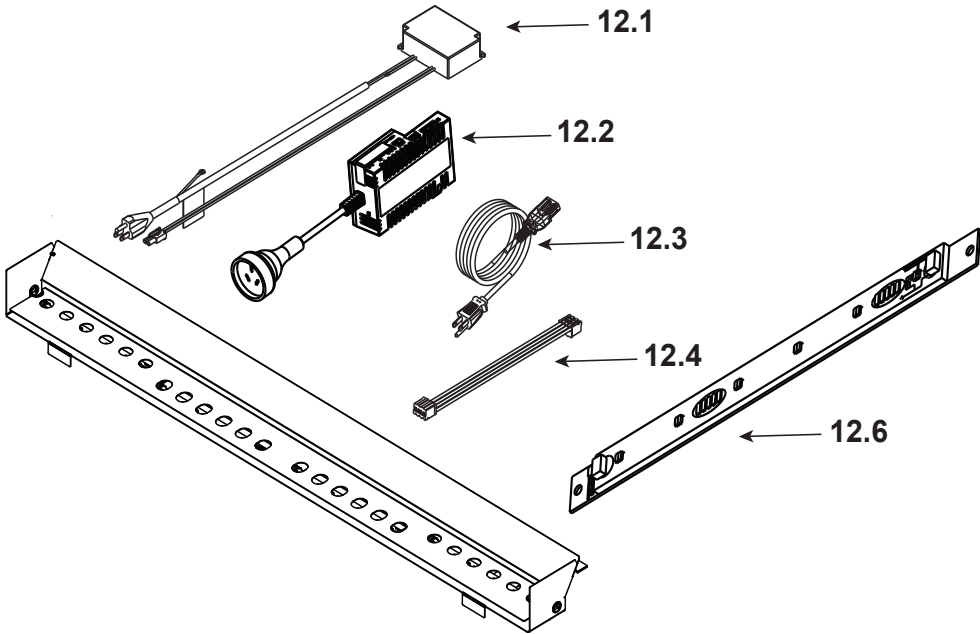


IMPORTANT: THIS IS DATED INFORMATION. Parts must be ordered from a dealer or distributor. **Hearth and Home Technologies does not sell directly to consumers.** Provide model number and serial number when requesting service parts from your dealer or distributor.

ITEM	DESCRIPTION	COMMENTS	PART NUMBER
1	Non-combustible Board, Top		SRV2323-460
2	Standoff, Top	Qty 4 req	2604-283
3	Non-combustible Board, Side Pkg of 2		2304-461
4	Bottom Glass		2321-018
5	Burner		2321-007
6	Pilot Assembly	See Breakdown for Item #6	
7	Shield, Pilot		2300-195
8	Glass Assembly		GLA-60-HNG
9	Shield, Bottom Glass		2321-179
10	Panel, Bottom		2323-147
11	Rock Tray		2321-151

Additional service part numbers on following page.

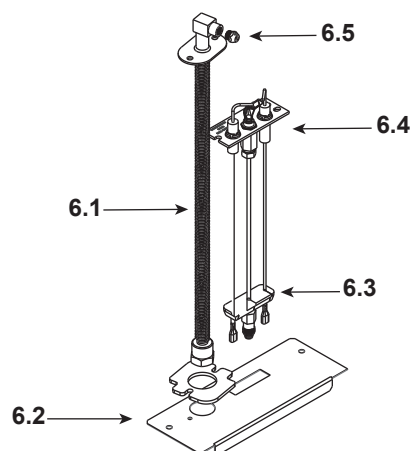
#12 LED Light Assembly



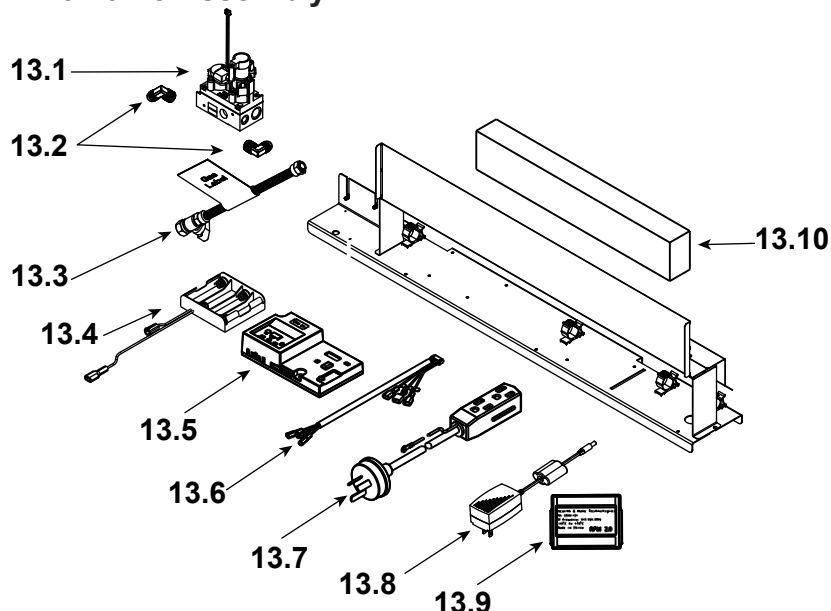
IMPORTANT: THIS IS DATED INFORMATION. Parts must be ordered from a dealer or distributor. **Hearth and Home Technologies does not sell directly to consumers.** Provide model number and serial number when requesting service parts from your dealer or distributor.

ITEM	DESCRIPTION	COMMENTS	PART NUMBER
12	LED Light Assembly		
12.1	Power Supply, LED 40W		SRV2577-113
12.2	AU-ACM Module		SRV2564-151
12.3	Cable, B Type AC Module		SRV2326-152
12.4	4 in LED Jumper Wire		2300-753
12.5	Main LED Wire Harness (not shown)		2326-185
12.6	LED Board and Strip Assembly		SRV2300-062

#6 Pilot Assembly



#13 Valve Assembly



IMPORTANT: THIS IS DATED INFORMATION. Parts must be ordered from a dealer or distributor. **Hearth and Home Technologies does not sell directly to consumers.** Provide model number and serial number when requesting service parts from your dealer or distributor.

ITEM	DESCRIPTION	COMMENTS	PART NUMBER
6.1	Bulkhead w/Flex tube		SRV2166-119
6.2	Plate, Flex and Pilot		2300-163
6.3	3-Hole Grommet		SRV2118-420
6.4	Pilot Assembly, NG		2406-012
	Pilot Assembly, Propane		2406-012 w/ SRV593-527
	Pilot Assembly, Butane		2406-012 w/ 593-529
6.5	Orifice, NG #28C		582-828
	Orifice, Propane #48C		SRV582-848
13.1	Valve, NG		SRV2166-302
	Valve, Propane		2166-303
13.2	Elbow	Qty 2 req	SRV4021-045
13.3	Flex Ball Valve Assembly		SRV2078-022
13.4	Battery Pack		SRV2326-134
13.5	Module IFT 2.0 Control		SRV2564-130
13.6	IFT 6 Pin Wiring Harness		SRV2326-132
13.7	Junction Cord		SRV2574-024
13.8	Transformer, 6 Volt Wall		SRV2326-131
13.9	Module RF AU		SRV2564-121
13.10	Component Insulation		2604-102

Additional service part numbers on following page.



No one builds a better fire

Service Parts

MEZZO1600-AUD

Beginning Manufacturing Date: July 2025
Ending Manufacturing Date: Active

IMPORTANT: THIS IS DATED INFORMATION. Parts must be ordered from a dealer or distributor. **Hearth and Home Technologies does not sell directly to consumers.** Provide model number and serial number when requesting service parts from your dealer or distributor.

ITEM	DESCRIPTION	COMMENTS	PART NUMBER
	Flue Restrictor		385-128
	Fiber Glass Rope		060-455
	Gasket Assembly Contains: Vent, Burner Neck, Seal Cap, Air Passage, Drawn Air Passage, and Flex and Pilot		2300-080
	Glass Latch Assembly	Qty 4 req	2146-413
	Log Assembly (Optional)		LOGS-60
	Light Kit, Ambient		ALK-60
	Refractory Assembly, Black Glass		BGK-60
	Remote RC450		SRV2564-110
	Touch Up Paint		TUP-GBK-12
	Vinyl Siding Shield		TRAP-VSS
Media Options			
	Media Kit, Red		MEDIA-RED-60
	Media Kit, Fog		MEDIA-FOG-60
	Media Kit, Ebony		MEDIA-EBONY-60
	Media Kit, Cobalt		MEDIA-COBALT-60
	Media Kit, Clear		MEDIA-CLEAR-60
	Media Kit, Amber		MEDIA-AMBER-60
Conversion Kits			
	Conversion Kit NG		N/A
	Conversion Kit Propane		ULPK-1600
	Pilot Orifice, NG		SRV593-528
	Pilot Orifice, Butane		593-529
	Pilot Orifice, Propane		SRV593-527
	Regulator, NG		NGK-DXV-50
	Regulator, Propane		SRVLPK-DXV-50