

IMPORTANT: THIS IS DATED INFORMATION. Parts must be ordered from a dealer or distributor. **Hearth and Home Technologies does not sell directly to consumers.** Provide model number and serial number when requesting service parts from your dealer or distributor.

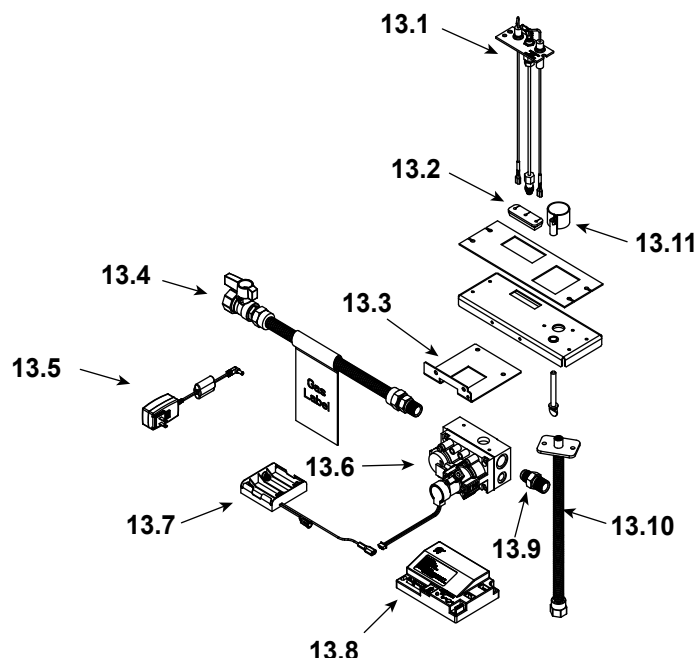


**Stocked
at Depot**

ITEM	DESCRIPTION	COMMENTS	PART NUMBER	
1	Outer Top, Side	Qty 2 req	SRV2273-109-BK	
2	Outer Wrap Replacement		SRV2275-105	
3	Outer Top		SRV2275-106-BK	
4	Baffle, Firebox		SRV2275-104-BK	
5	Pilot Bracket		SRV2273-125-BK	
6	Burner Assembly		SRV2275-007	Y
7	Refractory, Back Glass		2275-700	
8	Glass, Front Black		2275-701	
9	Glass Assembly		GLA-REVOV12	
10	Glass Bracket	Qty 2 req	SRV2273-115-BK	5
11	Junction Box Assembly		2273-016	Y
12	Component Tray		SRV2275-107-BK	
13	Valve Assembly	Refer to following Page		
	Template, Cardboard	No longer available	TEMP-V12-10	
	Door, Wrought Iron	Black	FRAME-V12-BK	
	Glass Clip Support Assembly	Qty 4 req	2273-012	
	Burner Orifice NG (#50C)		582-850	Y
	Burner Orifice LP (#58C)		582-858	Y

Additional service part numbers appear on following page.

#13 Valve Assembly



IMPORTANT: THIS IS DATED INFORMATION. Parts must be ordered from a dealer or distributor. **Hearth and Home Technologies does not sell directly to consumers.** Provide model number and serial number when requesting service parts from your dealer or distributor.



Stocked
at Depot

ITEM	DESCRIPTION	COMMENTS	PART NUMBER	
13.1	Pilot Assembly NG		2274-012	Y
13.2	3-Hole Grommet		SRV2118-420	
13.3	Valve Bracket		SRV2273-118	
13.4	Flex Ball Valve Assembly, 12"		SRV302-320	Y
13.5	Switched DC Regulator		SRV2326-131	Y
13.6	Valve NG		SRV2166-302	Y
	Valve LP		2166-303	Y
13.7	**Battery Pack		SRV2166-323	Y
13.8	Module, Flexible		2166-347	Y
13.9	Male Connector	Pkg of 5	303-315/5	Y
13.10	Bulkhead		4021-512	Y
13.11	Shutter sleeve		2273-150	Y
	Remote, RC200-HNG		2166-320	
	Wiring Harness, IPI		2166-304	Y
	Conversion Kit LP		LPK-RV12	Y
	Pilot Orifice LP		593-529	Y
	Regulator NG	W/Stepper Motor	NGK-DXV-50	Y
	Regulator LP	W/Stepper Motor	SRVLPK-DXV-50	Y

**Fuse for battery pack can be sourced locally, not a warranty item. Specs are 250v, 1A fuse, 3/4" long