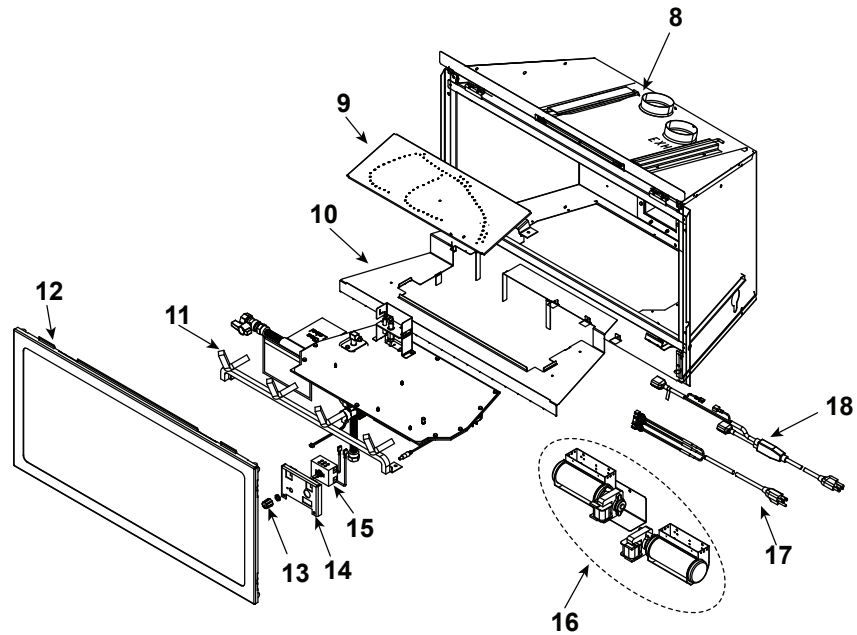


Log Set Assembly



IMPORTANT: THIS IS DATED INFORMATION. Parts must be ordered from a dealer or distributor. **Hearth and Home Technologies does not sell directly to consumers.** Provide model number and serial number when requesting service parts from your dealer or distributor.



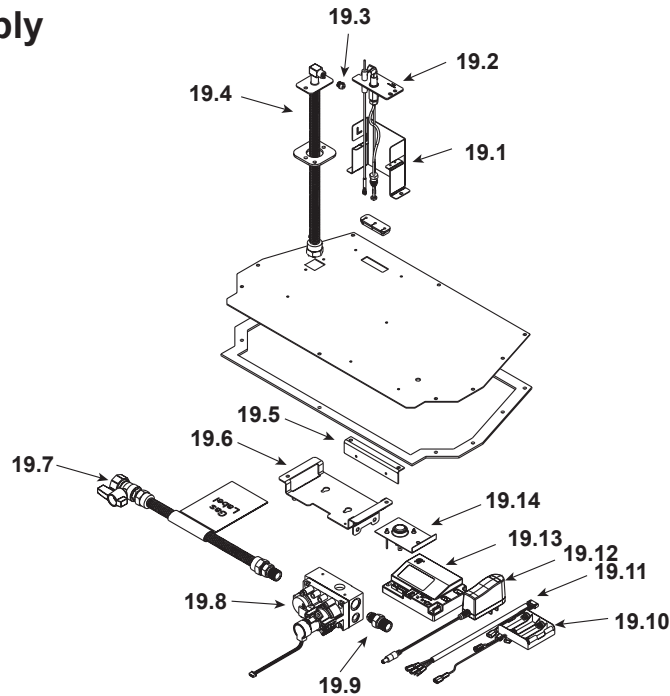
**Stocked
at Depot**

ITEM	DESCRIPTION	COMMENTS	PART NUMBER	Stocked at Depot
	Log Assembly		LOGS-I35	Y
1	Log 1	No longer available, Must order complete assembly	SRV2205-702	
2	Log 2		SRV2205-701	
3	Log 3		SRV2205-705	
4	Log 4		SRV2205-704	
5	Log 5		SRV2205-710	
6	Log 6		SRV2205-706	
7	Log 7		SRV2205-703	
8	Termination Plate Assembly		2205-012	
	Flex Pipe Handle		438-351	
	Gasket		2206-401	
9	*Burner Assembly	Call Tech Service with Serial number		
10	Base Pan	No Longer Available	2205-106	
11	Grate Assembly		SRV2205-016-BK	
12	Glass Door Assembly		GLA-2205	Y
13	Rheostat Knob		SRV100-512	Y
14	Control Panel		SRV2205-129-BK	
15	On/Off Rheostat		2206-800	Y
16	Blower Assembly		GFK-210-C	
17	Power Cord Assembly		2206-068	Y
18	Cord Assembly		2201-017	Y

*Call Tech Service with serial number for correct conversion and/or possible upgrade pilot kit

Additional service part numbers appear on following page.

#19 Valve Assembly



IMPORTANT: THIS IS DATED INFORMATION. Parts must be ordered from a dealer or distributor. **Hearth and Home Technologies does not sell directly to consumers.** Provide model number and serial number when requesting service parts from your dealer or distributor.



Stocked at Depot

ITEM	DESCRIPTION	COMMENTS	PART NUMBER	
19.1	*Pilot Bracket	Call Tech Service with Serial number		
19.2	*Pilot Assembly NG		Call Tech Service with Serial number	
	*Pilot Assembly LP			
19.3	Orifice NG (#33C)		582-833	Y
	Orifice LP (#50C)		582-850	Y
19.4	18" Flex Tube Assembly		530-302A	Y
19.5	Bracket, Control Panel		SRV2205-128	
19.6	Valve Bracket		SRV2205-146	
19.7	Flex Ball Valve Assembly		SRV302-320	Y
19.8	Valve NG		2166-302	Y
	Valve LP		2166-303	Y
19.9	Brass Connector	Pkg of 5	303-315/5	Y
19.10	Battery Pack**		SRV2166-323	Y
19.11	Wire Harness		2166-304	Y
19.12	Power Supply		SRV2326-131	Y
19.13	Module		2166-347	Y
19.14	Temp Sensor Assembly		SRV046-018A	Y

**Fuse for battery pack can be sourced locally, not a warranty item. Specs are 250v, 1A fuse, 3/4" long

*Call Tech Service with serial number for correct conversion and/or possible upgrade pilot kit

Additional service part numbers appear on following page.

