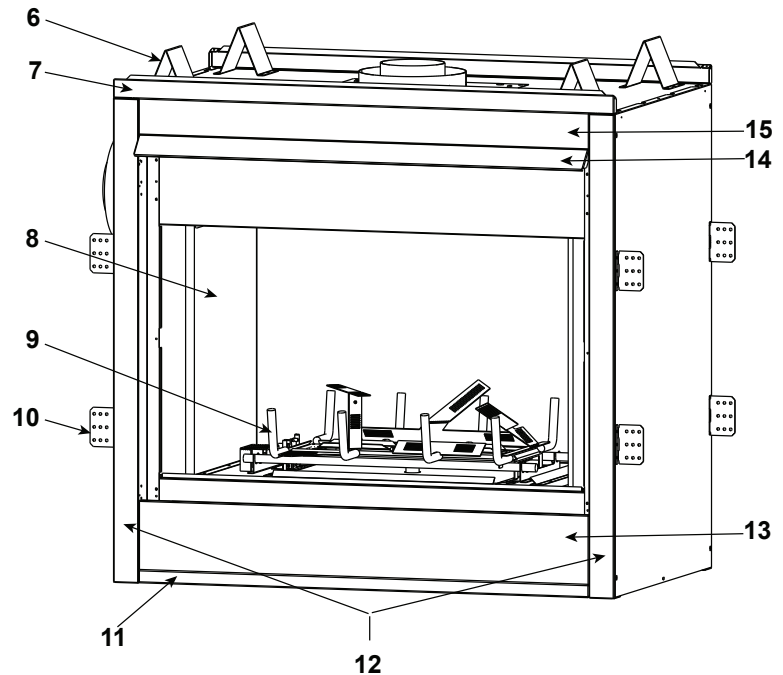
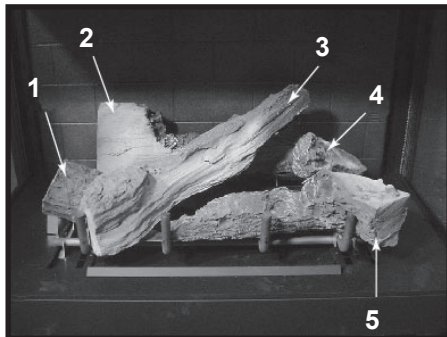


Log Set Assembly



IMPORTANT: THIS IS DATED INFORMATION. Parts must be ordered from a dealer or distributor. **Hearth and Home Technologies does not sell directly to consumers.** Provide model number and serial number when requesting service parts from your dealer or distributor.

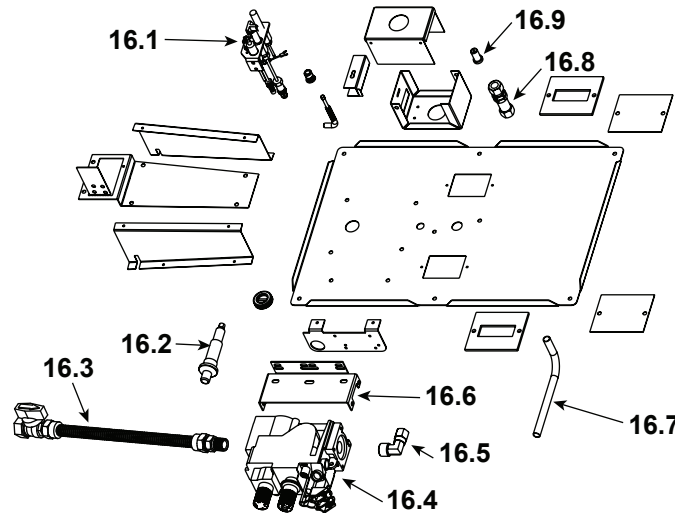


**Stocked
at Depot**

| ITEM | DESCRIPTION | COMMENTS | PART NUMBER | |
|------|---------------------------|---------------------|-------------|----------|
| | Log/Grate Assembly | | 35595 | Y |
| | Log Assembly | | 35596 | Y |
| 1 | Log #1 | | SRV33785 | |
| 2 | Log #2 | | SRV35592 | |
| 3 | Log #3 | | SRV35590 | |
| 4 | Log #4 | | SRV33782 | |
| 5 | Log #5 | | SRV35591 | |
| 6 | Top Standoff | Qty 4 req | SRV4044-111 | |
| 7 | Top Front Face | No longer available | 27651 | |
| 8 | Refractory - NG | No longer available | 35367 | |
| | Refractory - LP | No longer available | 4002-071 | |
| 9 | Grate Assembly | | 35594 | |
| 10 | Nailing Flanges | Qty 8 req | SRV31190 | |
| 11 | Bottom Front Face | No longer available | 25916 | |
| 12 | Column Face | No longer available | 25909 | |
| 13 | Lower Front Access Panel | | 25893 | |
| 14 | Hood | Pre 03/04 | 27658 | |
| | | Post 03/04 | SRV29575 | |
| 15 | Upper Front Face | Overlay only | 27655 | |

Additional service part numbers appear on following page.

#16 Valve Assembly



IMPORTANT: THIS IS DATED INFORMATION. Parts must be ordered from a dealer or distributor. **Hearth and Home Technologies does not sell directly to consumers.** Provide model number and serial number when requesting service parts from your dealer or distributor.



**Stocked
at Depot**

| ITEM | DESCRIPTION | COMMENTS | PART NUMBER | |
|------|----------------------------|---------------------|-------------|---|
| 16.1 | Pilot Assembly - NG | Pre GA1548727 | 4021-732 | Y |
| | | Post GA1548727 | 4021-330 | Y |
| | Pilot Assembly - LP | Pre GA1548727 | 4021-733 | Y |
| | | Post GA1548727 | 4021-329 | Y |
| 16.2 | Push Button Ignitor | | 291-513 | Y |
| 16.3 | Flex Tube Assembly | | SRV302-320 | Y |
| 16.4 | Valve w/Regulator - NG | Pre GA1548727 | SRV24033 | Y |
| | | Post GA1548727 | SRV230-0710 | Y |
| | Valve - LP | Pre GA1548727 | SRV24034 | Y |
| | | Post GA1548727 | SRV230-0720 | Y |
| 16.5 | Brass Elbow | | SRV17524 | |
| 16.6 | Valve Bracket - NG | Pre GA1548727 | SRV31824 | |
| | | No longer available | 30060 | |
| | Valve Bracket - Lower | | 19303 | |
| 16.7 | Burner Supply Tube | Pre GA1548727 | 33619 | Y |
| | | Post GA1548727 | 4002-078 | Y |
| 16.8 | Bulkhead | No longer available | SRV13405 | |
| 16.9 | Burner Orifice (.115) - NG | | SRV26617 | Y |
| | Burner Orifice (.067) - LP | | SRV17812 | Y |

Additional service part numbers appear on following page.

IMPORTANT: THIS IS DATED INFORMATION. Parts must be ordered from a dealer or distributor. **Hearth and Home Technologies does not sell directly to consumers.** Provide model number and serial number when requesting service parts from your dealer or distributor.



**Stocked
at Depot**

| ITEM | DESCRIPTION | COMMENTS | PART NUMBER | |
|------|--|---------------------|-------------|---|
| | Brass Connector - 90 degree - Flex | | SRV4021-045 | |
| | Brass Connector - Male - Tube | | 13425 | |
| | Burner Assembly | | 33970 | Y |
| | Exhaust Collar Assembly | No longer available | 25837 | |
| | Exhaust Cover Plate | No longer available | 25840 | |
| | Flue Adapter Assembly | No longer available | 25881 | |
| | Flue Cover Assembly | No longer available | 25900 | |
| | Flue Cover Plate | No longer available | 25901 | |
| | Front Glass Assembly | | 4002-053 | Y |
| | Front Screen Assembly | | 26161 | Y |
| | Glass Latch Assembly | No longer available | 30537 | |
| | | Post GA1337847 | 33858/2 | Y |
| | Glass Latch Handle | No longer available | 4002-061 | |
| | Intake Collar Assembly | No longer available | 25841 | |
| | Intake Cover Plate | No longer available | 25844 | |
| | Junction Box Kit | No longer available | 31581 | |
| | Lava Rock (2 lb. Bag) | | 4021-296 | |
| | Mineral Wool | | SRV14333 | |
| | Pilot Bracket - NG | | 4002-037 | |
| | Pilot Bracket - LP | No longer available | 25929 | |
| | Screen Bracket | No longer available | SRV28159 | |
| | Seal Plate Gasket | No longer available | 4002-039 | |
| | Thermocouple | | SRV72956 | Y |
| | Thermopile | | 2103-512 | Y |
| | Wall Switch Wires | | SRV28602 | Y |
| | | | | |
| | Conversion Kit NG Conversion Kit LP | Pre GA1548727 | CKVN | Y |
| | | Post GA1548727 | SCKVN | |
| | | Pre GA1548727 | CKVP | Y |
| | | Post GA1548727 | SCKVP | |
| | Pilot Orifice - NG | Pre GA1548727 | SRV446-505 | Y |
| | | Post GA1548727 | SRV2103-116 | Y |
| | Pilot Orifice (.0115) - LP | | SRV446-517 | Y |
| | | | | |
| | | | | |
| | Installation Instructions | Pre GA1548727 | 35593 | |
| | | Post GA1548727 | 4002-079 | |
| | | | | |