

Part number list on following pages.

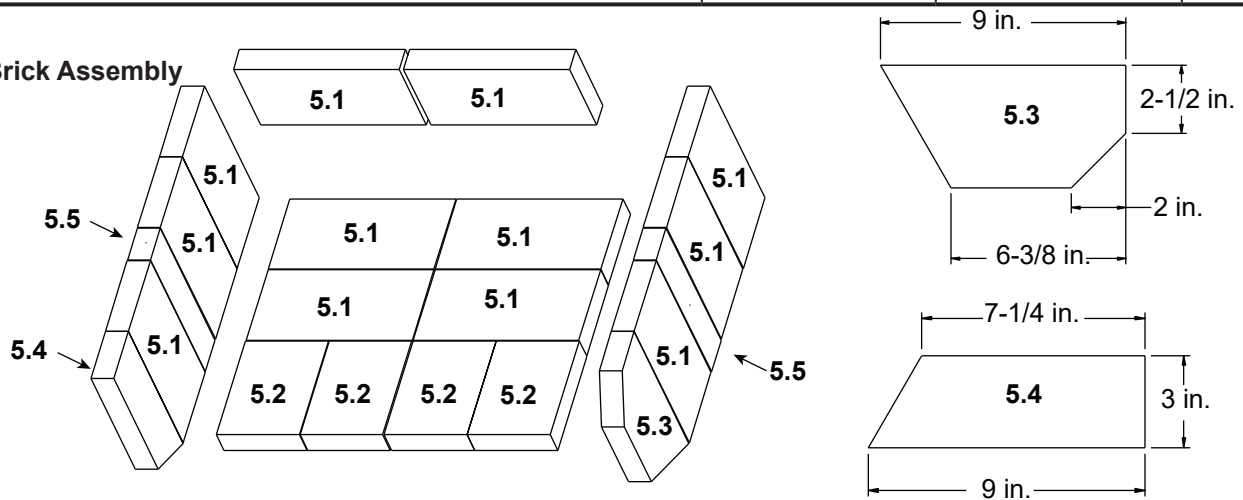
IMPORTANT: THIS IS DATED INFORMATION. When requesting service or replacement parts for your appliance please provide model number and serial number.



Stocked
at Depot

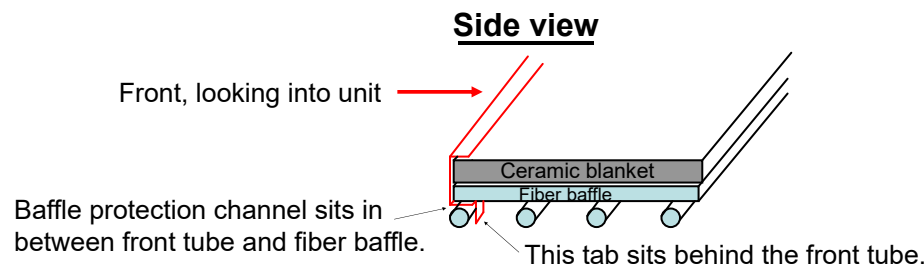
| ITEM | DESCRIPTION | COMMENTS | PART NUMBER | |
|------|---|----------|-------------|---|
| 1 | Air Channel, Convection w/Bracket - Retain original serial # label | | SRV7033-144 | |
| 2 | Air Supply Back | | SRV7033-134 | |
| 3 | Flue Collar | | SRV7000-302 | Y |
| 4 | Panel Assembly, Side, Left | | SRV7037-007 | |

#5 Brick Assembly



| | | | | |
|-----|---|-------------------|-------------|---|
| 5 | Brick Assembly, Complete Set | Pkg of 20 | SRV7037-003 | |
| 5.1 | Brick, 9 x 4.5 x 1.25" | Qty. 12 Req | 832-0550 | Y |
| 5.2 | Brick, 6 x 4.5 x 1.25" | Qty. 4 Req | SRV7128-002 | |
| 5.3 | Brick, 9 x 4.5 x 1.25" w/Angle | Qty. 1 Req | SRV7128-806 | |
| 5.4 | Brick, 9 x 3 x 1.25" w/Angle | Qty. 1 Req | SRV7128-618 | |
| 5.5 | Brick, small 9 x 2 x 1.25" | Qty. 2 Req | SRV7128-018 | |
| | Brick, Uncut | Pkg of 6 | 832-3040 | Y |
| 6 | Rear Air Channel Assembly | | SRV7033-002 | Y |
| 7 | Ceramic Fiber Blanket, 1/2 " Thick | 15 1/2" x 19 1/2" | 832-3390 | Y |
| 8 | Baffle Fiber Board - 9-1/2" W x 15-3/4" H | Pkg of 2 | SRV7037-112 | Y |
| 9 | Tube Support Rack | | SRV7033-148 | |
| 10 | Brick Retainer | Qty. 2 Req | SRV7033-149 | |

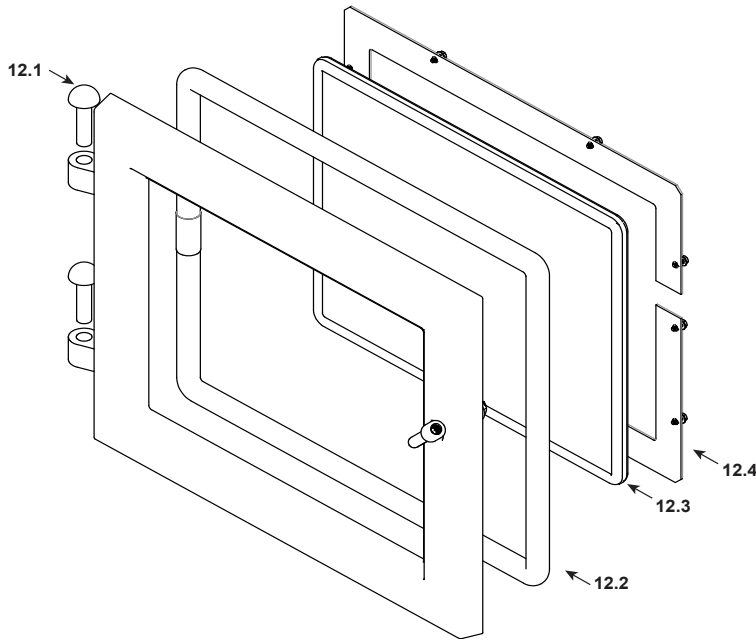
#11 Baffle Protection Channel



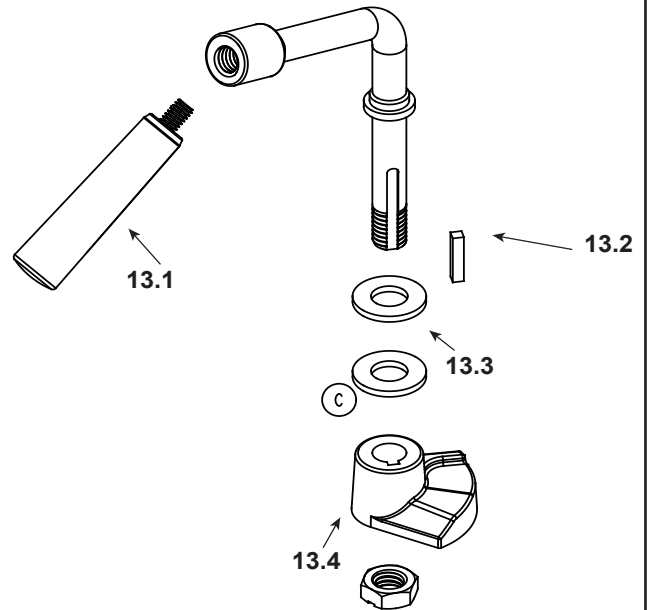
| | | | | |
|----|---------------------------|--|---------------|--|
| 11 | Baffle Protection Channel | | SRV7033-298 | |
| | Mobile Home Brackets | | SRV7039-208/4 | |

Additional service part numbers appear on following page.

#12 Door Assembly



#13 Door Handle Assembly



IMPORTANT: THIS IS DATED INFORMATION. When requesting service or replacement parts for your appliance please provide model number and serial number.

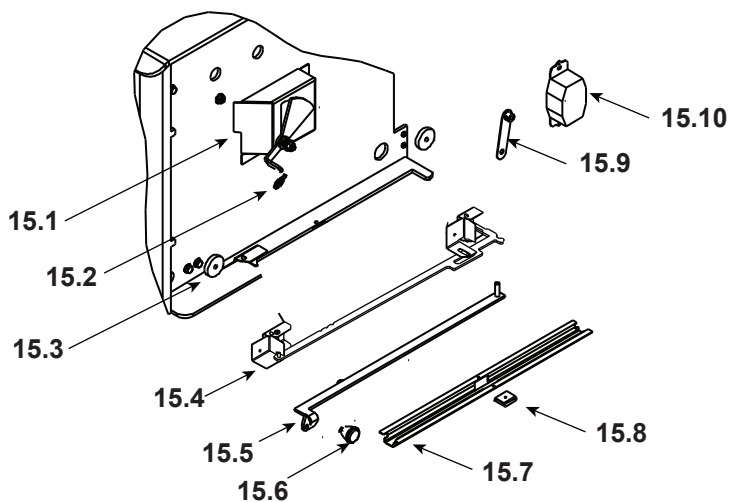


Stocked
at Depot

| ITEM | DESCRIPTION | COMMENTS | PART NUMBER | |
|------|---|--------------|-------------|---|
| 12 | Door Assembly | | SRV7037-061 | |
| 12.1 | Hinge Pins, 1/2" | Black | 7000-606/2 | Y |
| 12.2 | Rope, Door, 3/4" x 84" - Field cut to Size | 7 Ft Length | 832-1680 | Y |
| 12.3 | Door Glass Assembly - 15-1/2" W x 13-3/8" H | | SRV7044-027 | Y |
| | Gasket, Glass Tape - Field cut to Size | 5 Ft Length | 832-0460 | Y |
| 12.4 | Glass Frame Set | | SRV7044-191 | |
| 12.5 | Screw, Flat Head Philips 8-32 x 1/2 | Pkg of 12 | 220-0490/12 | Y |
| 13 | Door Handle Assembly (Does not include Spring Handle) | | SRV8001-002 | |
| 13.1 | Door Handle | Fiber Handle | SRV7000-948 | Y |
| 13.2 | Key, Cam Latch | | SRV430-1151 | |
| 13.3 | Washer, SAE, 3/8 | Pkg of 3 | 832-0990 | Y |
| 13.4 | Cam Latch | | SRV430-1141 | |
| 14 | Leg - Painted | | SRV7039-060 | |

Additional service part numbers appear on following page.

#15 Burn Rate Control Assembly



IMPORTANT: THIS IS DATED INFORMATION. When requesting service or replacement parts for your appliance please provide model number and serial number.



Stocked
at Depot

| ITEM | DESCRIPTION | COMMENTS | PART NUMBER | |
|-----------|--|----------------|---------------|---|
| 15.1 | Burn Rate Control Assembly | | SRV7037-054 | Y |
| 15.2 | Spring Handle, 1/4" | Nickel | SRV250-8340 | Y |
| 15.3 | Door Gasket - Front & Rear Air Timer Doors | | 7033-282 | Y |
| 15.4 | Timer Air Control Assembly | | SRV7037-018 | Y |
| | Rear Air Door Assembly | | SRV7037-013 | Y |
| 15.5 | Rear Air Control Arm Assembly | | SRV7037-005 | Y |
| 15.6 | Knob - Start-Up Control Knob | | SRV7000-343 | |
| 15.7 | Air Control Rod Guide | | SRV7033-210 | |
| 15.8 | Latch, Magnet - For Air Control | | SRV229-0631 | |
| 15.9 | Timer Arm Assembly | | SRV7033-034 | Y |
| 16 | Panel Assembly, Right Side | | SRV7037-006 | |
| 17 | Tube Channel Access Cover (Top) | | SRV7033-237 | |
| 18 | Tube, Channel Assembly | Manifold Tubes | SRV7033-023 | Y |
| 19 | Timer (Only) Replacement Assembly | | SRV480-1940 | Y |
| | Paint, Touch-Up | Black | 3-42-19905 | |
| FASTENERS | | | | |
| | Avk Rivnut Repair Kit - 1/4-20 & 3/8-16 Rivnut Tools | | RIVNUT-REPAIR | Y |
| | Bolt, Hex Head, 1/4-20 X 1 | Pkg of 10 | 25221A/10 | Y |
| | Screw, Pan Head Philips Tc 8-32X1/2 | Pkg of 12 | 220-0490/12 | Y |
| | Washer, Sae, 3/8 | Pkg of 3 ea. | 832-0990 | Y |