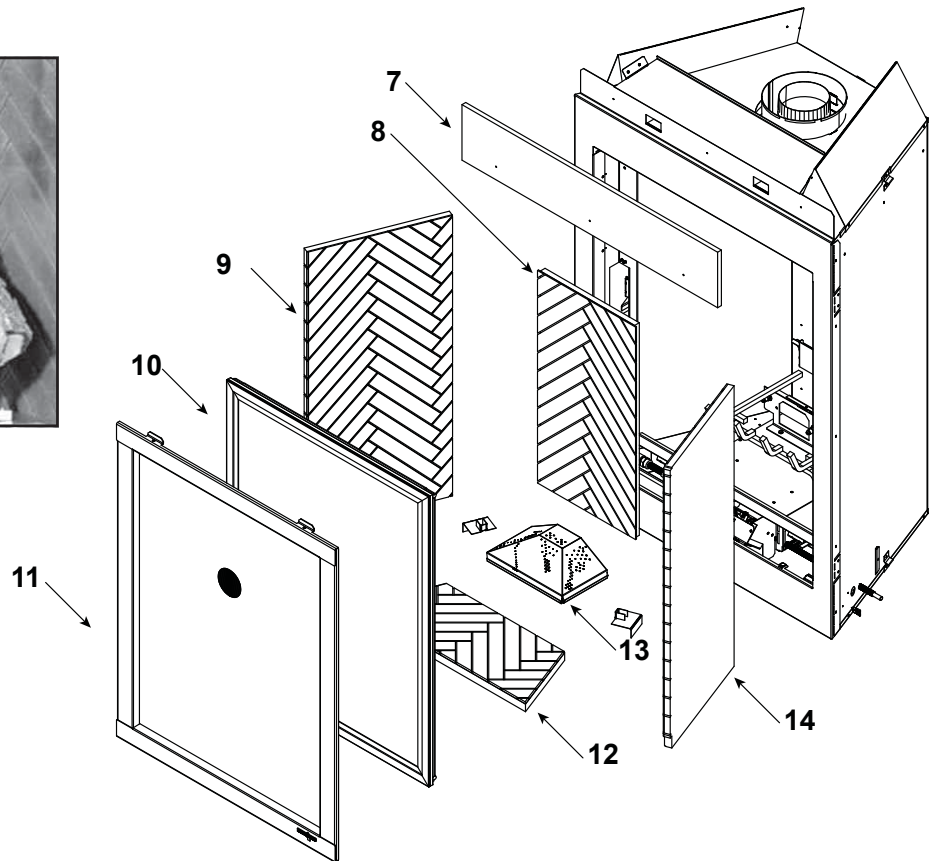
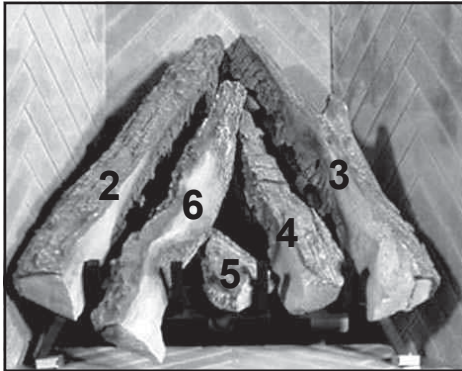


Log Set Assembly



IMPORTANT: THIS IS DATED INFORMATION. Parts must be ordered from a dealer or distributor. **Hearth and Home Technologies does not sell directly to consumers.** Provide model number and serial number when requesting service parts from your dealer or distributor.



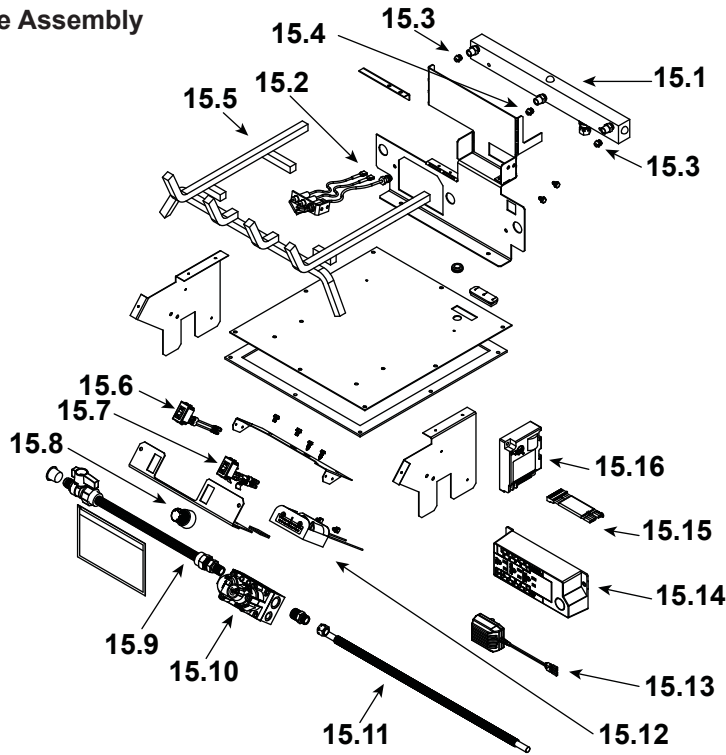
Stocked at Depot

| ITEM | DESCRIPTION | COMMENTS | PART NUMBER | |
|------|----------------------------|--|--------------|---|
| | Log Set Assembly | | LOGS-EVEREST | Y |
| 1 | Log 1 (Back Log Not Shown) | Pre 5/15/16, Must order complete assembly | SRV750-703 | |
| 2 | Log 2 | | SRV750-701A | |
| 3 | Log 3 | | SRV750-702A | |
| 4 | Log 4 | | SRV750-705 | |
| 5 | Log 5 | | SRV750-706 | |
| 6 | Log 6 | | SRV750-704 | |
| 7 | Non Comb | | 2367-389 | |
| 8 | Refractory, Back | | SRV750-732 | |
| 9 | Refractory, Left Side | | SRV750-730 | |
| 10 | Glass Door Assembly | | GLA-EVEREST | Y |
| 11 | Decorative Front | | SRV2367-031 | |
| | Trim Door Mesh | | 2172-042 | Y |
| 12 | Refractory, Base | | SRV750-733 | |
| 13 | Burner NG, Propane | | 750-175A | Y |
| 14 | Refractory, Right Side | | SRV750-731 | |

No one builds a better fire

Beginning Manufacturing Date: Dec 2014
Ending Manufacturing Date: March 2019

#15 Standing Pilot Valve Assembly



IMPORTANT: THIS IS DATED INFORMATION. Parts must be ordered from a dealer or distributor. **Hearth and Home Technologies does not sell directly to consumers.** Provide model number and serial number when requesting service parts from your dealer or distributor.



**Stocked
at Depot**

| ITEM | DESCRIPTION | Comments | (IPI) Post 5000 | Stocked at Depot |
|-------|----------------------------|----------|-----------------|------------------|
| 15.1 | Manifold Assembly | | 750-310A | Y |
| 15.2 | Pilot Assembly NG | | SRV593-512 | Y |
| | Pilot Assembly Propane | | SRV593-513 | Y |
| 15.3 | Log Orifice NG (#53A) | | 582-853 | Y |
| | Log Orifice Propane (#64A) | | 582-864 | Y |
| 15.4 | Orifice NG (#45A) | | 582-545 | Y |
| | Orifice Propane (#56) | | 582-856 | Y |
| 15.5 | Grate Assembly | | 750-360A | |
| 15.6 | On/Off Rocker Switch | | 750-556A | Y |
| 15.7 | Rocker Switch Assembly | | 060-521A | Y |
| 15.8 | Flame Control Knob | | 291-531 | Y |
| 15.9 | Flex Ball Valve Assembly | | SRV302-320 | Y |
| 15.10 | Valve NG | | 750-500 | Y |
| | Valve Propane | | 750-501 | Y |
| 15.11 | Flexible Gas Connector | | 567-301A | Y |
| 15.12 | Battery Pack | | SRV593-594 | Y |
| 15.13 | 3 Volt Transformer | | SRV593-593 | Y |
| 15.14 | Junction Box | | SRV4021-013 | Y |
| 15.15 | Module Wire Assembly | | SRV593-590 | Y |
| 15.16 | Module | | 593-592 | Y |

Additional service part numbers appear on following page.

No one builds a better fire

Beginning Manufacturing Date: Dec 2014

Ending Manufacturing Date: March 2019

IMPORTANT: THIS IS DATED INFORMATION. Parts must be ordered from a dealer or distributor. **Hearth and Home Technologies does not sell directly to consumers.** Provide model number and serial number when requesting service parts from your dealer or distributor.



Stocked
at Depot

| ITEM | DESCRIPTION | COMMENTS | PART NUMBER | Stocked at Depot |
|--------------------------------------|------------------------|----------|---------------|------------------|
| | Exhaust Baffle | | SRV750-153-BK | |
| | Fiberglass Rope | | 060-455 | |
| | Glass Latch Assembly | Pkg of 2 | 33858/2 | Y |
| | Grommet, 3-Hole | | SRV2118-420 | |
| | Lava Rock | | 4021-295 | |
| | Mineral Wool | | 050-721 | |
| | Touch Up Paint | | TUP-GBK-12 | |
| | Wire, Wall Switch | | 062-550 | |
| | | | | |
| | | | | |
| | | | | |
| | | | | |
| | | | | |
| | | | | |
| | | | | |
| | | | | |
| | | | | |
| | | | | |
| | | | | |
| | | | | |
| | | | | |
| | | | | |
| | | | | |
| | | | | |
| | | | | |
| | | | | |
| | | | | |
| | | | | |
| | | | | |
| | | | | |
| | | | | |
| | | | | |
| | | | | |
| | | | | |
| | | | | |
| | | | | |
| | | | | |
| | | | | |
| | | | | |
| | | | | |
| | | | | |
| | | | | |
| | | | | |
| | | | | |
| | | | | |
| | | | | |
| | | | | |
| | | | | |
| | | | | |
| IPI CONVERSION KITS Post 5000 | | | | |
| | Conversion Kit NG | | NGKP-EVEREST | Y |
| | Conversion Kit Propane | | LPKP-EVEREST | Y |
| | Pilot Orifice NG | | SRV593-528 | Y |
| | Pilot Orifice Propane | | SRV593-527 | Y |
| | Regulator NG | | SRVNGK-DXV | Y |
| | Regulator Propane | | SRVLPK-DXV | Y |