

IMPORTANT: THIS IS DATED INFORMATION. Parts must be ordered from a dealer or distributor. **Hearth and Home Technologies does not sell directly to consumers.** Provide model number and serial number when requesting service parts from your dealer or distributor.

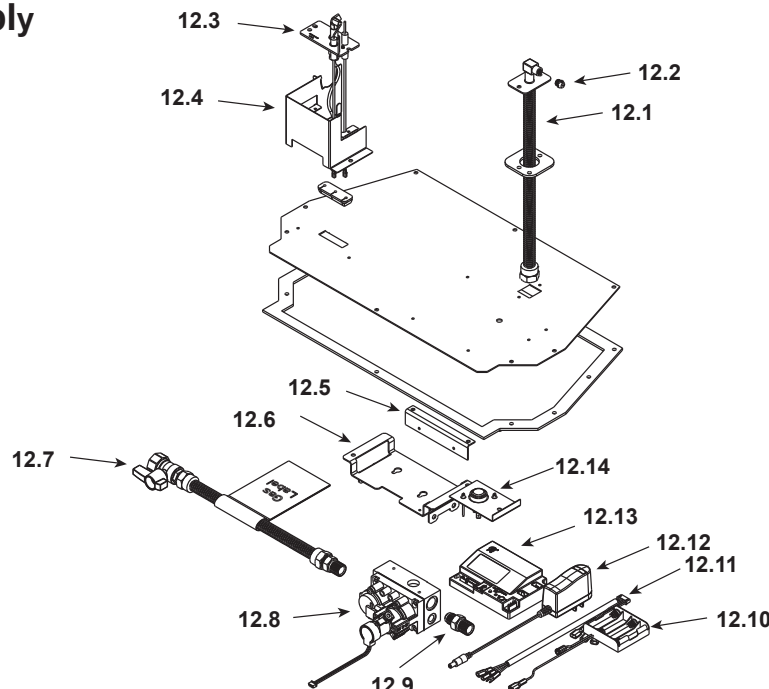


**Stocked
at Depot**

ITEM	DESCRIPTION	COMMENTS	PART NUMBER	
1	Termination Plate Assembly		2206-012	
	Flex Pipe Handle		438-351	
	Gasket		2206-401	
2	Burner Assembly		2203-007	Y
3	Burner Leg		2203-103	
4	Base Pan		2239-100	
5	On/Off Rheostat		2206-800	Y
6	Glass Door Assembly		GLA-2206	Y
7	Rheostat Knob		SRV100-512	Y
8	Control Panel		SRV2205-129-BK	
9	Blower		GFK-210-C	
10	Wire Assembly		2206-068	Y
11	Power cord Assembly		2201-017	Y

Additional service part numbers appear on following page.

#12 Valve Assembly



IMPORTANT: THIS IS DATED INFORMATION. Parts must be ordered from a dealer or distributor. **Hearth and Home Technologies does not sell directly to consumers.** Provide model number and serial number when requesting service parts from your dealer or distributor.



Stocked
at Depot

ITEM	DESCRIPTION	COMMENTS	PART NUMBER	
12.1	Flexible Gas Connector		SRV7000-156	Y
12.2	Orifice NG (#42C)		582-842	Y
	Orifice LP (#53C)		582-853	Y
12.3	*Pilot Assembly NG		Call Tech Service with Serial number	
	*Pilot Assembly LP			
12.4	*Pilot Bracket	Call Tech Service with Serial number		
12.5	Control Panel Bracket		SRV2205-128	
12.6	Valve Bracket		SRV2205-146	
12.7	Flex Ball Valve Assembly		SRV302-320	Y
12.8	Valve NG		SRV2166-302	Y
	Valve LP		2166-303	Y
12.9	Brass Connector	PKG of 5	303-315/5	Y
12.10	Battery Pack		SRV2166-323	Y
12.11	Wire Assembly		2166-304	Y
12.12	Transformer		SRV2326-131	Y
12.13	Control Module		2166-347	Y
12.14	Temp Sensor Switch		SRV046-018A	Y

**Fuse for battery pack can be sourced locally, not a warranty item. Specs are 250v, 1A fuse, 3/4" long

*Call Tech Service with serial number for correct conversion and/or possible upgrade pilot kit

Additional service part numbers appear on following page.



Service Parts

COSMO-I30

No one builds a better fire

Beginning Manufacturing Date: June 2010

Ending Manufacturing Date: Aug 2011

IMPORTANT: THIS IS DATED INFORMATION. Parts must be ordered from a dealer or distributor. **Hearth and Home Technologies does not sell directly to consumers.** Provide model number and serial number when requesting service parts from your dealer or distributor.



Stocked at Depot

ITEM	DESCRIPTION	COMMENTS	PART NUMBER	
	Gasket Assembly		2206-080	
	Gems, Black	No longer available	MEDIA-BK-GEMS	
	Glass Latch Assembly, Bottom	Qty 2 req	2155-045	Y
	Glass Latch Assembly, Top	Qty 2 req	339-121A	Y
	Glass Refractory, Back		2239-200	
	Glass Refractory, Left		2239-201	
	Glass Refractory, Right		2239-202	
	Jumper wire		SRV2187-198	Y
	Remote Wire Assembly		2103-013	Y
	Surround	No longer available	SI30-4027D-BK	
	Touch Up Paint		TUP-GBK-12	
	EMC Filter		2201-198	
	*Conversion Kit NG		Call Tech Service with Serial number	
	*Conversion Kit LP			
	*Pilot Orifice NG		Call Tech Service with Serial number	
	*Pilot Orifice LP			
	Regulator NG		NGK-DXV-50	Y
	Regulator LP		SRVLPK-DXV-50	Y

*Call Tech Service with serial number for correct conversion and/or possible upgrade pilot kit