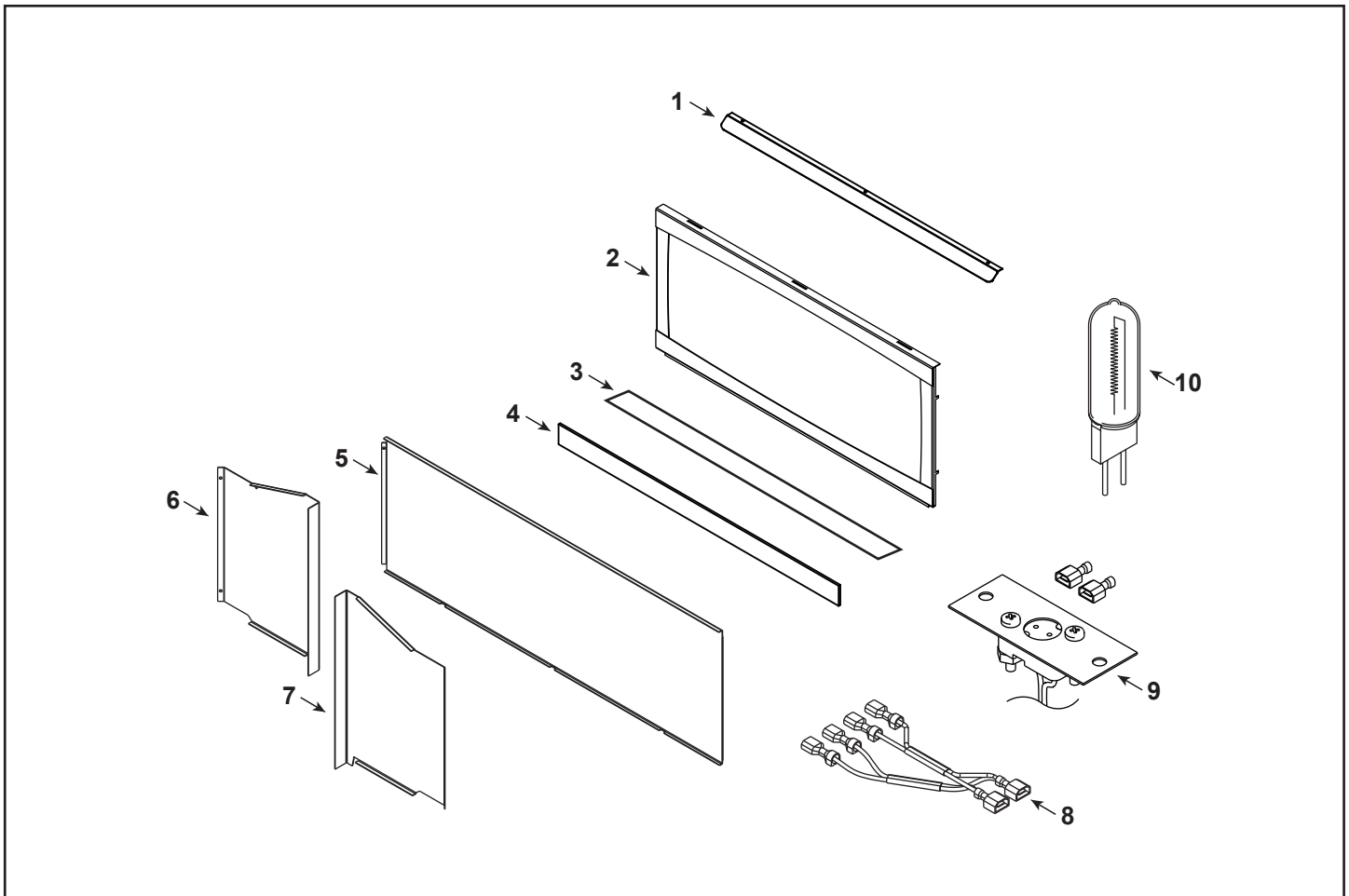
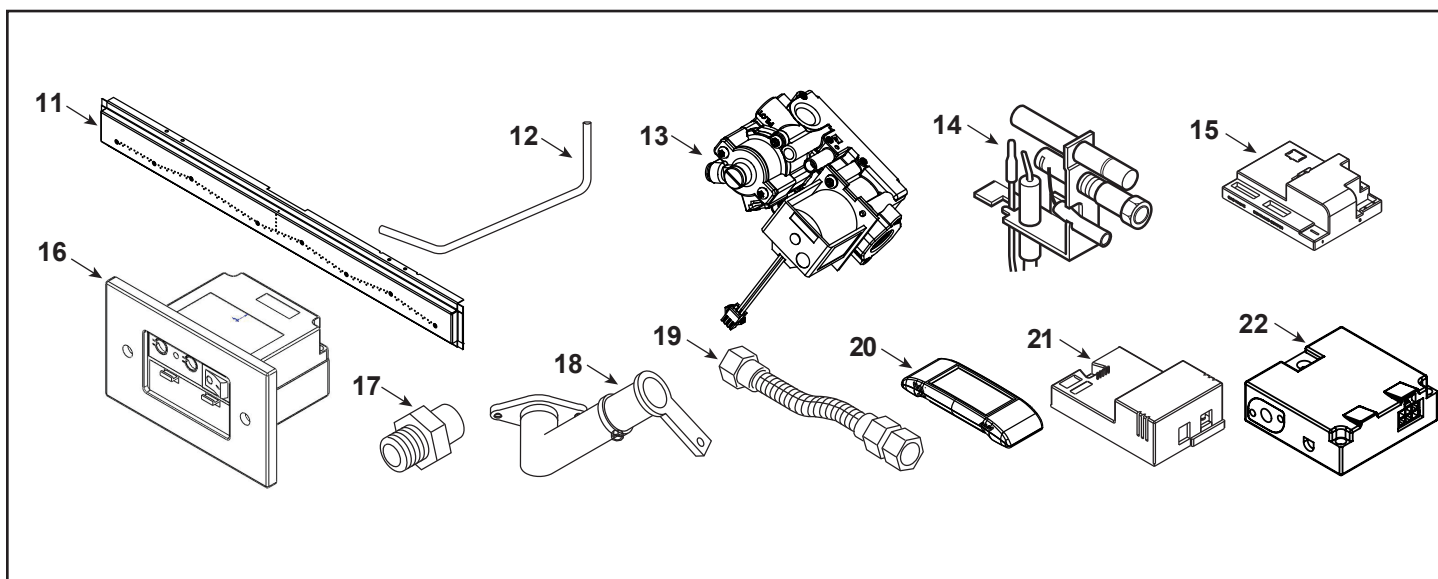


**42" Artisan Vent Free Linear Fireplace w/Signature Command**


IMPORTANT: THIS IS DATED INFORMATION. Parts must be ordered from a dealer or distributor. **Hearth and Home Technologies does not sell directly to consumers.** Provide model number and serial number when requesting service parts from your dealer or distributor.


**Stocked  
at Depot**

ITEM	DESCRIPTION	COMMENTS	PART NUMBER	
1	Eyebrow		SRV4116-135	
2	Screen Frame Assembly		20305693K	Y
3	Panel, Access Door		20305434K	
4	Deflection Glass		SRV20305432	Y
5	Porcelain Panel, Rear		20305461	
6	Porcelain Panel, Left		20305462	
7	Porcelain Panel Right		20305464	
8	Wire Harness		SRV78D1077	Y
9	Bulb Socket	Qty 13 req	SRV73D4521	
10	Bulb	15w (qty 12 req)	SRV4601-155	Y
		Top Light (90w)	SRV4602-302	Y
	Non Combustible/Cement Board		20305772	
	Junction Box Assembly		26D2128K	



**IMPORTANT: THIS IS DATED INFORMATION.** Parts must be ordered from a dealer or distributor. **Hearth and Home Technologies does not sell directly to consumers.** Provide model number and serial number when requesting service parts from your dealer or distributor.


**Stocked  
at Depot**

ITEM	DESCRIPTION	COMMENTS	PART NUMBER	
11	Burner Assembly		20305656K	Y
12	Tube, Tee to Valve	Qty 2 req	20305454K	
	Tube Tee to Injector		78D0090K	Y
	Regulator Tube		20304913K	
	Pilot Tube		20306010K	Y
13	Gas Valve Assembly		SRV4018-063	Y
14	Pilot Assembly		SRV14D0473	Y
	Pilot Regulator		SRV14D0469	Y
15	Control Box		SRV80D0018	Y
16	Command Center		SRV80D0005	Y
17	Injector (Qty 2 req)		SRV57D0680	
18	Venturi (Qty 2 req)		45D0600	
19	Flexhose w/Shutoff Valve		SRV69D0030	Y
20	Remote Transmitter (Full Funtion)	No longer available	SRV-TSFSC	
21	AC Module		SRV80D0004	Y
	Wire Valve/Control		SRV80D0010	Y
	Wire AC Module		SRV80D0009	
	Wire, CC/CB 24" w/Power Leads		SRV20301889	Y
	Wire, Thermocouple Module SCS		SRV20301890	Y
	Wire, Piezo Assembly (Sensor Wire)		20303256K	
	Support, Glass (Painted)	Qty 2 req	20306020K	
22	Thermocouple Module		SRV20303179	Y

**Beginning Manufacturing Date: Oct 2019**

Ending Manufacturing Date: Nov 2020

**IMPORTANT: THIS IS DATED INFORMATION.** Parts must be ordered from a dealer or distributor. **Hearth and Home Technologies does not sell directly to consumers.** Provide model number and serial number when requesting service parts from your dealer or distributor.



## Stocked at Depot

[illegible]