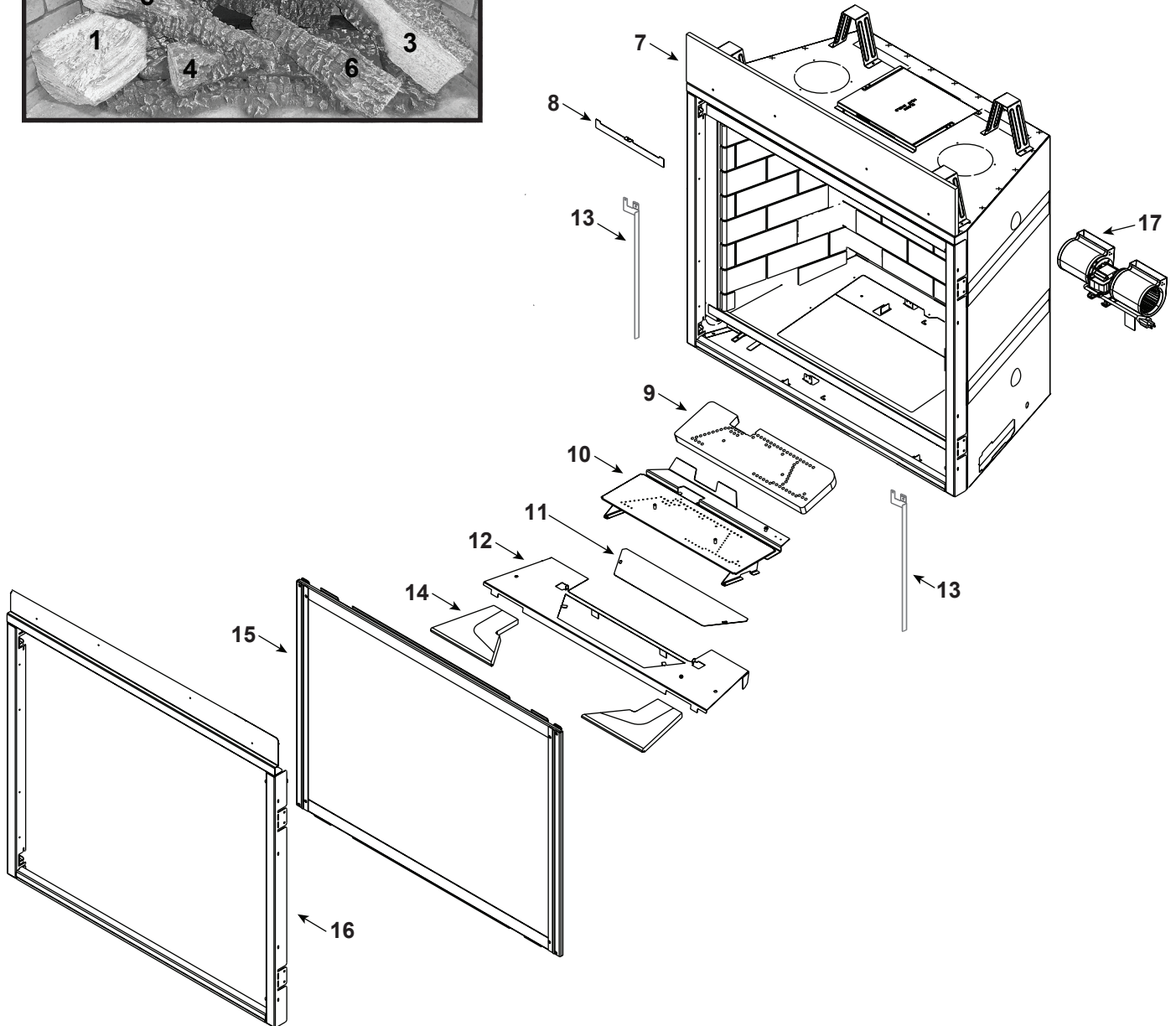
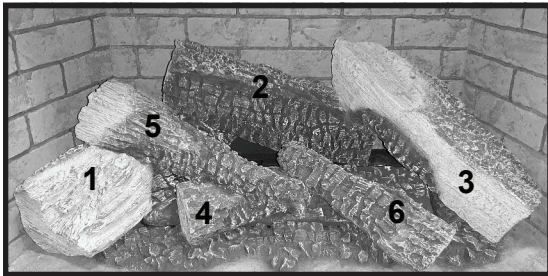


Log Set Assembly



Part number list on following page.



No one builds a better fire

Service Parts

6KX-AUB

Beginning Manufacturing Date: July 2025

Ending Manufacturing Date: Active

IMPORTANT: THIS IS DATED INFORMATION. Parts must be ordered from a dealer or distributor. **Hearth and Home Technologies does not sell directly to consumers.** Provide model number and serial number when requesting service parts from your dealer or distributor.

ITEM	DESCRIPTION	COMMENTS	PART NUMBER
	Log Assembly		LOGS-6K
1	Log #1		SRV2582-700
2	Log #2		SRV2582-701
3	Log #3		SRV2582-702
4	Log #4		SRV2582-703
5	Log #5		SRV2582-704
6	Log #6		SRV2582-705
7	Non-combustible board		2583-137
8	Curtain, Flue Light		2583-179
9	Burner Overlay		SRV2583-127
10	Burner Assembly	NG & Propane	2589-007
		ULPG	2589-008
11	Mesh, Ember Bed		2583-157
12	Basket, Ember Bed		2583-156
	Glass Liner Kit (Back, Left, Right, Bases, Top, & Insulation Boards)		GL-36MX
	Magic Glass Assembly (Back, Left, & Right)		2592-079
13	Refractory Brackets BK (Right and Left)		SRV2583-747
14	Refractory Base (Right & Left)		SRV2583-076-BK
15	Glass Assembly		GLA-6KX
	Finishing Strips	Sold as set only	SRVFS-6K
16	Surround		SRV2583-019
	Surround Bottom		SRV2583-193-1
17	Blower		2264-500A
	Elbow Heat Shield		385-290
	Flue Restrictor		385-128
	Gasket Assembly (Vent, seal cap, cover, drawn neck, shutter, valve, & bulkhead)		2583-080
	Glass Clip Assembly (Top)	Qty 2 req	2155-047
	Glass Clip Assembly (Bottom)	Qty 2 req	2155-045
	Mineral Wool		050-721
	Seal Cap	Qty 2 req	SRV4031-221
	Illuminated Embers Glass Media	4lbs.	2680-753
	RC450 Remote Assembly		SRV2564-110

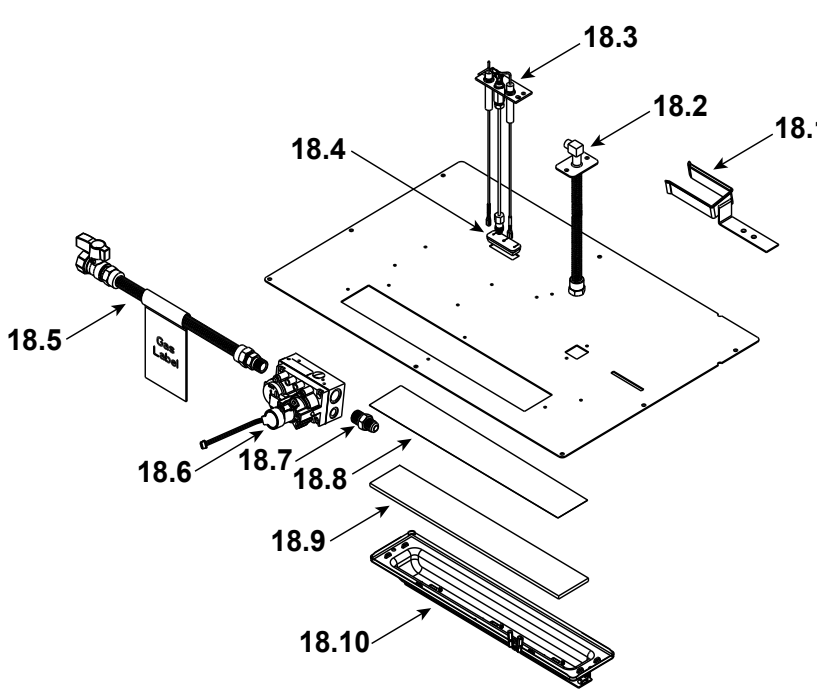
Additional service part numbers on following page.

No one builds a better fire

Beginning Manufacturing Date: July 2025

Ending Manufacturing Date: Active

IMPORTANT: THIS IS DATED INFORMATION. Parts must be ordered from a dealer or distributor. **Hearth and Home Technologies does not sell directly to consumers.** Provide model number and serial number when requesting service parts from your dealer or distributor.

ITEM	DESCRIPTION	COMMENTS	PART NUMBER
<p>#18 Valve Assembly</p> 			
18.1	Shutter Assembly		2583-011
18.2	Bulkhead W/Flex tube		SRV7000-156
18.3	Pilot Assembly, NG		SRV2106-169
	Pilot Assembly, LP		SRV2106-170
	Pilot Tube		SRV485-301
18.4	3-Hole Grommet		SRV2118-420
18.5	Flex Ball Valve Assembly		SRV303-330
18.6	Valve, NG		SRV2166-302
	Valve, LP		2166-303
18.7	Male Connector	Pkg of 5	303-315/5
18.8	Kapton, Ember		2583-171
18.9	Glass, Ember		2583-173
18.10	LED Assembly, Ember Bed		2583-061
	Battery Holder		SRV2326-142
	Orifice, NG (#31C)		SRV582-831
	Orifice, LP (#49C)		SRV582-849
	Orifice, ULPG (#53C)		582-853

**Fuse for battery pack can be sourced locally, not a warranty item. Specs are 250v, 3A fuse, 3/4" long

Additional service part numbers on following page.

No one builds a better fire

Beginning Manufacturing Date: July 2025
Ending Manufacturing Date: Active

IMPORTANT: THIS IS DATED INFORMATION. Parts must be ordered from a dealer or distributor. **Hearth and Home Technologies does not sell directly to consumers.** Provide model number and serial number when requesting service parts from your dealer or distributor.

ITEM	DESCRIPTION	COMMENTS	PART NUMBER
<p>#19 Component Tray</p>			
19.1	LED Wire (to LEDs)		SRV2589-165
19.2	Harness, 6 Pin		SRV2583-063
19.3	Module, RF IFT 2.0 AU		SRV2564-121
19.4	Module, Control IFT 2.0		SRV2564-130
19.5	LED Resistor Module		2326-125
19.6	Transformer, 6 Volt Wall		SRV2326-131
19.7	LED 12 Volt Power Supply		SRV2577-113
19.8	Cable, B Type AC Module		SRV2326-152
19.9	Power Cord Assembly		SRV2577-037
19.10	AUX Module, IFT 2-ACM-AU		SRV2564-151
19.11	LED Light Power Wire (to AUX Module)		SRV2583-433
	Conversion Kit NG		NGK-MID
	Conversion Kit Propane		6KX-N2P-B
	Conversion Kit ULPG		6KX-N2B-B
	Pilot Orifice, NG		SRV593-528
	Pilot Orifice, Propane		SRV593-527
	Pilot Orifice, ULPG		593-529
	Regulator, NG		NGK-DXV-50
	Regulator, Propane		SRVLPK-DXV-50