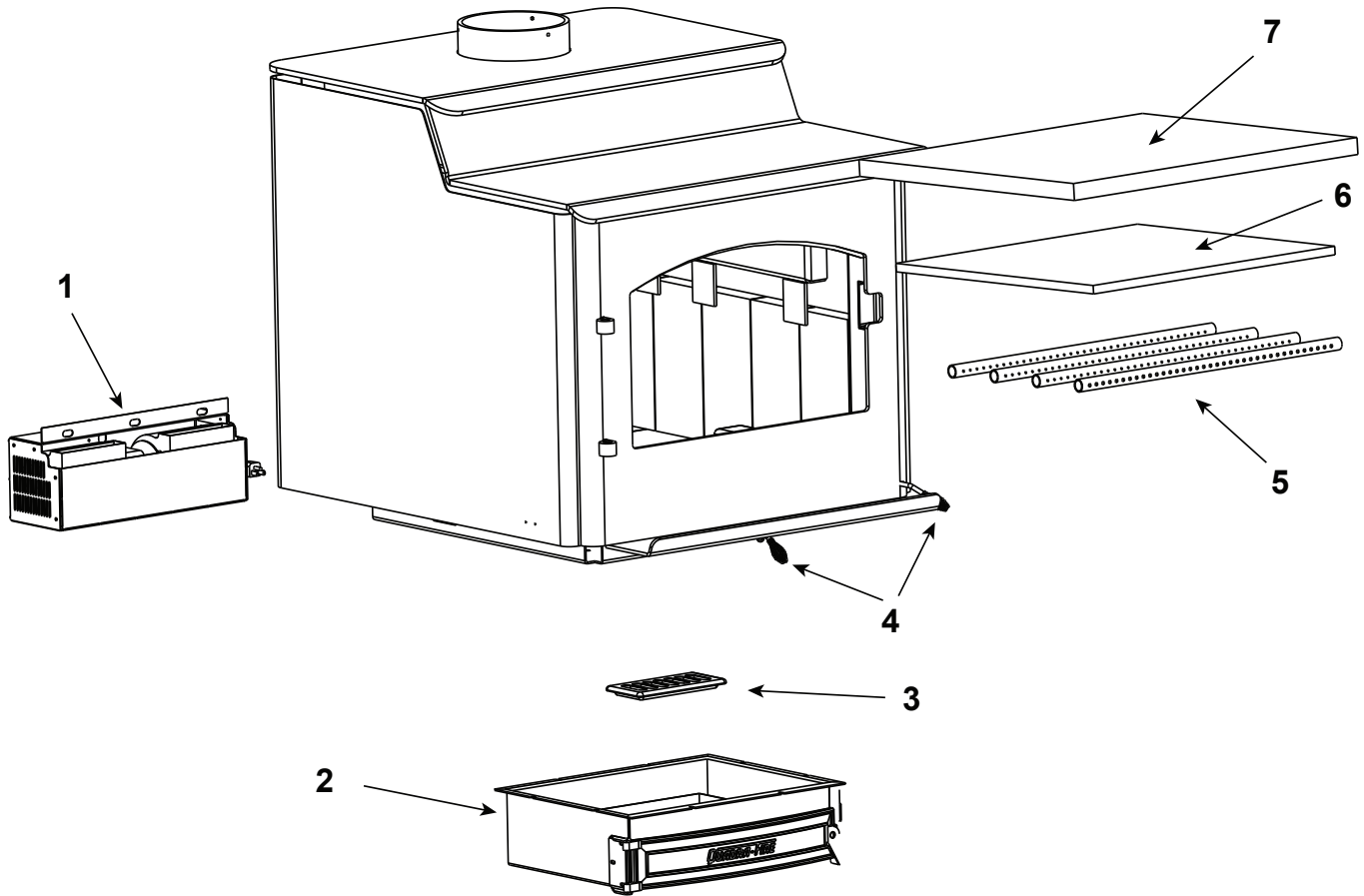


820-0720 (April 2002 - Jan. 2003), 820-0721 (Feb. 2003 - May 2009)



Part number list on following page.

Beginning Manufacturing Date: April 2002
Ending Manufacturing Date: May 2009

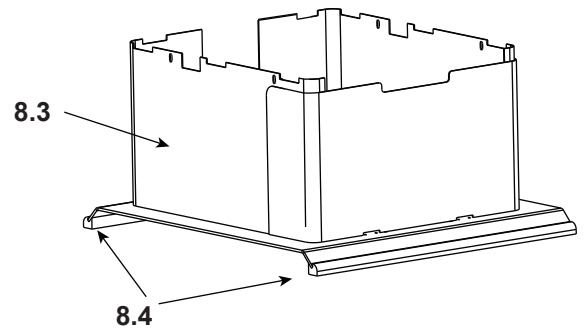
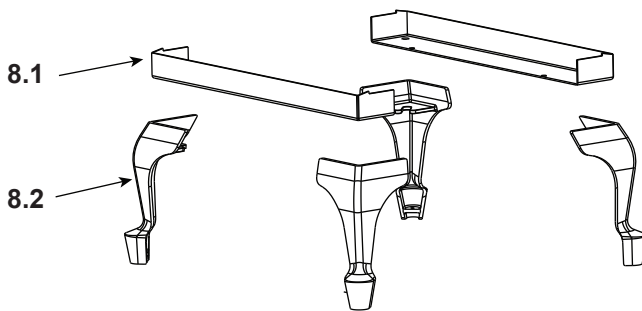
IMPORTANT: THIS IS DATED INFORMATION. Parts must be ordered from a dealer or distributor. **Hearth and Home Technologies does not sell directly to consumers.** Provide model number and serial number when requesting service parts from your dealer or distributor.



**Stocked
at Depot**

| ITEM | DESCRIPTION | COMMENTS | PART NUMBER | |
|------|---|---------------------|-------------|---|
| 1 | Blower Assembly | No longer available | 831-1701 | |
| | Blower Cord w/ Speed Control | | 821-0110 | Y |
| | Blower, Convection - Replacement Blower | | 812-4900 | Y |
| 2 | Ash Pan Removal System (ARS) Assembly w/Cast Door | No longer available | 831-1671 | |
| 3 | Grate, ARS | No longer available | 832-2980 | |
| | Ash Box Hinge | | 434-0310 | |
| | Ash Pan | | 434-0330 | |
| | Gasket, Rope, 3/8, Field Cut to Size | 10 Ft | SRV7000-134 | |
| | Handle, Ash Removal System | | 472-5060 | |
| | Plug, Trimount, .250" | Pkg of 24 | 229-0880/24 | Y |
| 4 | Spring Handle, Air Control, 1/4" | Gold | 832-0630 | Y |
| | | Nickel | 250-8340 | Y |
| 5 | Manifold Tube Set | | 832-3440 | Y |
| | Manifold Clip/Screws | | 832-0661 | Y |
| 6 | Baffle, Fiberboard | | 832-3430 | Y |
| 7 | Ceramic Fiber Blanket, 1 In., Field Cut to Size | | 832-3401 | Y |

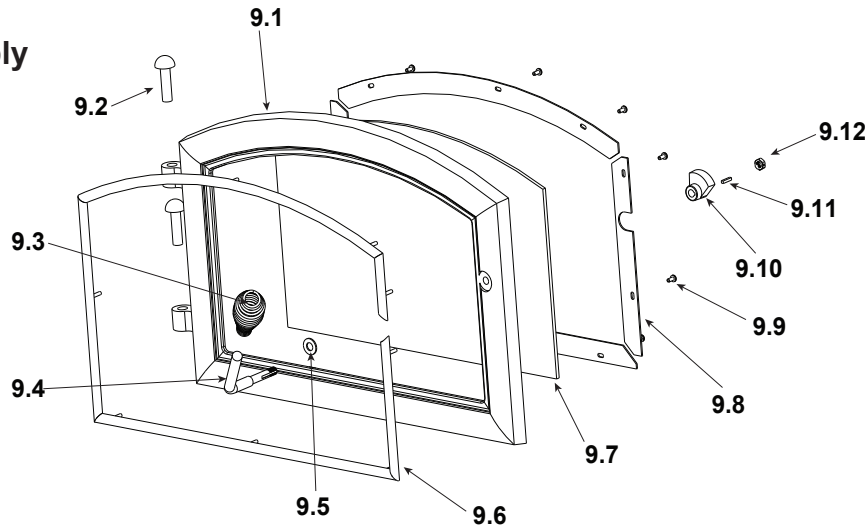
#8 Legs and Pedestal Assemblies



| | | | | |
|-----|------------------------|---------------------|-------------|--|
| 8.1 | Leg Adapter (Bracket) | No longer available | 472-0540 | |
| 8.2 | Legs, Queen Anne | Black | 831-1240 | |
| | | No longer available | 831-1250 | |
| | | Nickel | LEGS-QANL | |
| 8.3 | Pedestal Base Assembly | No longer available | 831-1910 | |
| 8.4 | Trim, Oak Strips | No longer available | SRV472-0520 | |

Additional service part numbers appear on following page.

#9 Door, Glass and Door Handle Assembly



IMPORTANT: THIS IS DATED INFORMATION. Parts must be ordered from a dealer or distributor. **Hearth and Home Technologies does not sell directly to consumers.** Provide model number and serial number when requesting service parts from your dealer or distributor.

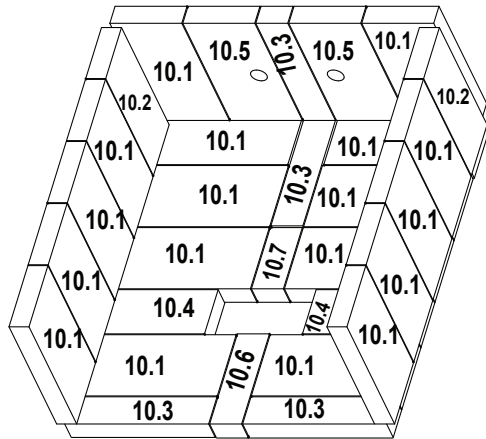


Stocked at Depot

| ITEM | DESCRIPTION | COMMENTS | PART NUMBER | |
|------|--|---------------------|--------------|---|
| 9.1 | Door Assembly | No longer available | 831-1921 | |
| | | No longer available | 831-1931 | |
| | | No longer available | DR-57NL | |
| 9.2 | Hinge Pins, 1/2" | Gold | 832-0250 | |
| | | Nickel | SRV430-5320 | |
| 9.3 | Spring Handle, 1/2" | Gold | 832-0620 | Y |
| | | Nickel | 250-8330 | Y |
| 9.4 | Door Handle Only | | SRV430-1131 | |
| 9.5 | Washer, Sae, 3/8 | Pkg of 3 | 832-0990 | |
| 9.6 | Trim Ring, Door | No longer available | 472-0600 | |
| | | No longer available | 472-0690 | |
| 9.7 | Glass Assembly - 17.61 W x 11.49 H | | SRV7000-014 | Y |
| 9.8 | Glass Frame Set | | GLA-FRM-5700 | |
| 9.9 | Screw, Flat Head Philips 8-32 x 1/2 | Pkg of 10 | 832-0860 | |
| 9.10 | Cam Latch | | SRV430-1141 | |
| 9.11 | Key, Cam Latch | | SRV430-1151 | |
| 9.12 | Nut, Locking (For Door Handle) | Pkg of 24 | 226-0100/24 | Y |
| | Logo, Quadra-Fire | Pkg of 10 | 7000-649/10 | |
| | Gasket, Glass Tape, 3/4", Field Cut to Size | 5 Ft. | 832-0460 | Y |
| | Rope, Door, 3/4" x 84", Field Cut to Size | 7 Ft. | 832-1680 | Y |
| | Component Pack (Includes Gold Spring Handles (1) 1/2" & (2) 1/4", (2) Gold Hinge Pins, Quadra-Fire Logo) | Gold | SRV436-5350 | |
| | Component Pack (Includes Nickel Spring Handles (1) 1/2" & (2) 1/4", (2) Nickel Hinge Pins, Quadra-Fire Logo) | Nickel | 436-5360 | |

Additional service part numbers appear on following page.

#10 Brick Set



IMPORTANT: THIS IS DATED INFORMATION. Parts must be ordered from a dealer or distributor. **Hearth and Home Technologies does not sell directly to consumers.** Provide model number and serial number when requesting service parts from your dealer or distributor.



Stocked at Depot

| ITEM | DESCRIPTION | COMMENTS | PART NUMBER | |
|--------------------|---|----------------------------|---------------|---|
| 10 | Brick Assembly - Complete Set | Pkg of 30 | 832-3410 | |
| 10.1 | Brick, 9 x 4.5 x 1.25" | Qty 18 reg | | |
| 10.2 | Brick, 9 x 3.75 x 1.25" | Qty 2 reg | | |
| 10.3 | Brick, 9 x 2 x 1.25" | Qty 4 reg | | |
| 10.4 | Brick, 7 x 3.25 x 1.25" | Qty 2 reg | | |
| 10.5 | Brick w/Hole, 9 x 4.5 x 1.25 | Pkg of 2 | SRV436-0380 | |
| 10.6 | Brick, 6.5 x 2 x 1.25" | Qty 1 req | | |
| 10.7 | Brick, 4.5 x 2 x 1.25" | Qty 1 req | | |
| | Brick, Uncut | Pkg of 1 | 832-0550 | |
| | | Pkg of 6 | 832-3040 | |
| | Ars Firebox Seal Plate Assembly | No longer available | 832-3110 | |
| | Handle Assembly | w/Secondary Latch | 472-5130 | |
| | Paint Touch-Up, 4 oz | | 812-0910 | |
| | Reliner Kit, Service | No longer available | SRV472-5170 | |
| | Speed Control Only (Rheostat) | | 842-0370 | Y |
| ACCESSORIES | | | | |
| | Outside Air Kit | No longer available | 831-1780 | |
| | Front Cover | No longer available | 436-7000 | |
| | Outside Air Shield | | SRV33271 | Y |
| | Rear Channel, Outside Air Kit | No longer available | 436-7020 | |
| | Rear Cover Plate | No longer available | 436-7030 | |
| | Side Channels | | 436-7010 | |
| | Upgrade, Door, Nickel Spring Handles, Hinge Pins & Logo | | UK-DRNL | |
| FASTENERS | | | | |
| | Avk Rivnut Repair Kit - 1/4-20 & 3/8-16 Rivnut Tools | | RIVNUT-REPAIR | Y |
| | Screw, Machine Screw 1/4-20 X 5/8 | Pkg of 24 | 220-0440/24 | Y |
| | Screw, Pan Head Phillips 8-32 X 3/4 | Pkg of 24 | 229-1100/24 | Y |