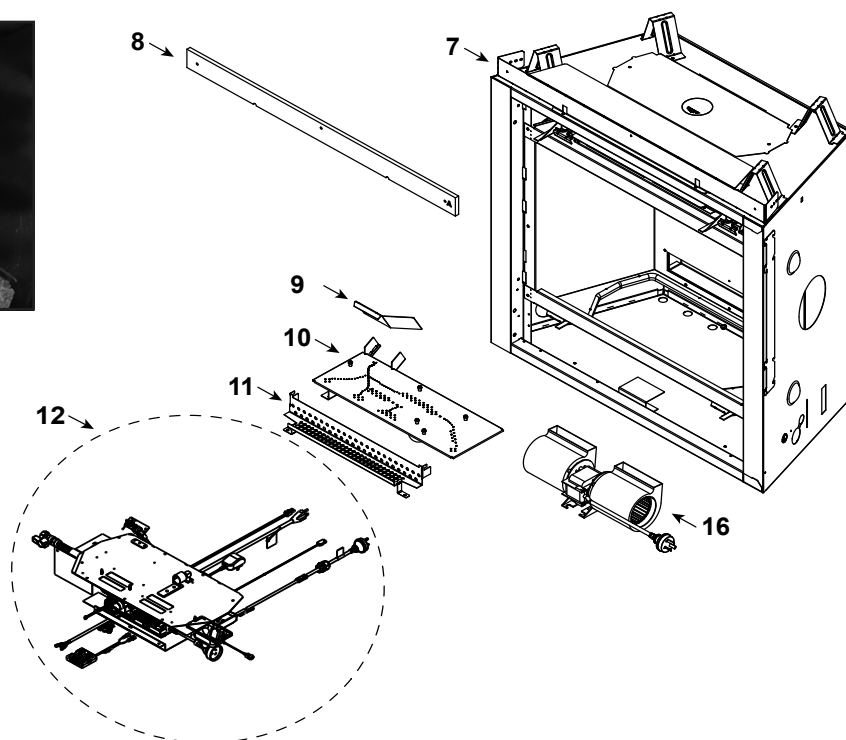
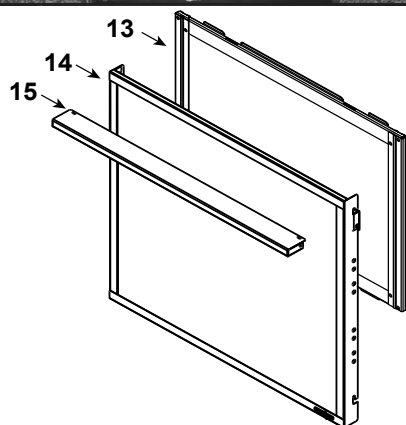
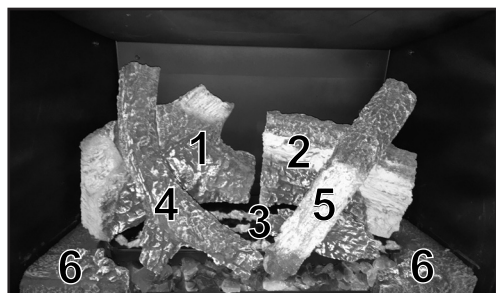


Log Set Assembly

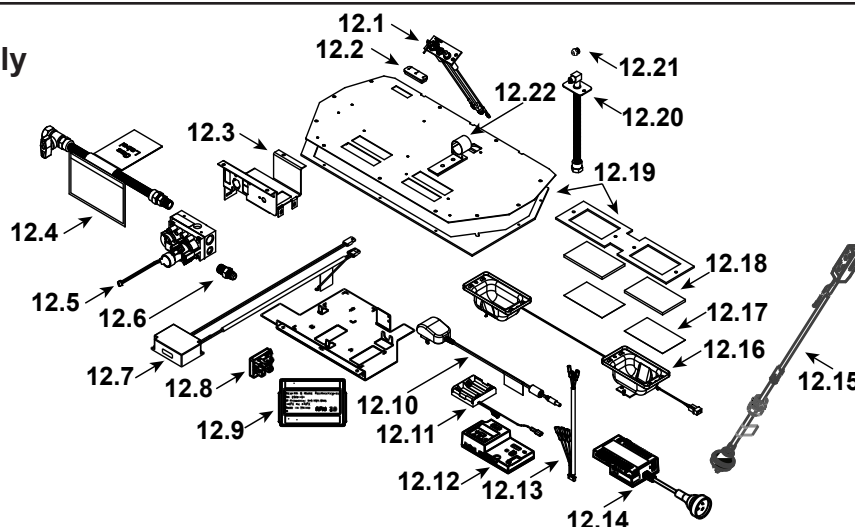


IMPORTANT: THIS IS DATED INFORMATION. Parts must be ordered from a dealer or distributor. **Hearth and Home Technologies does not sell directly to consumers.** Provide model number and serial number when requesting service parts from your dealer or distributor.

ITEM	DESCRIPTION	COMMENTS	PART NUMBER
	Log Set Assembly	Hearth Sold Separately	LOGS-SL5
1	Rear Left Log		SRV2391-707
2	Rear Right Log		SRV2391-708
3	Burner Log		SRV2391-709
4	Top Left Log		SRV2392-711
5	Top Right Log		SRV2391-710
6	Left and Right Hearth		SRVHEARTH-SL5X
7	Support, Non-combustible		2279-119
8	Non-combustible Board		2279-401
9	Heat Shield, Pilot		2279-110
10	Burner Assembly	NG	2279-007
		Propane/ULPG	SRV2279-008
11	Ember Bed		2372-108
12	Valve Assembly		See following Page
13	Glass Door Assembly		GLA-550TRS
14	Firescreen Front		FS-5-BK
15	Hood		2371-274
16	Fan Assemby, 240V		2264-500A

Additional service part numbers appear on following page.

#12 Valve Assembly



IMPORTANT: THIS IS DATED INFORMATION. Parts must be ordered from a dealer or distributor. **Hearth and Home Technologies does not sell directly to consumers.** Provide model number and serial number when requesting service parts from your dealer or distributor.

ITEM	DESCRIPTION	COMMENTS	PART NUMBER
12.1	Pilot Assembly NG		SRV2106-169
	Pilot Assembly Propane		SRV2106-170
	Pilot Tube		SRV485-301
12.2	3-Hole Grommet		SRV2118-420
12.3	Valve Bracket		2118-104
12.4	Flex Ball Valve Assembly		SRV302-320
12.5	Valve NG		SRV2166-302
	Valve Propane		2166-303
12.6	Male Connector	Pkg of 5	303-315/5
12.7	LED Power Supply, 12V		2326-114
12.8	LED Resistor Module		2326-125
12.9	Module, RF IFT 2.0 AU		SRV2564-121
12.10	Transformer, 6 Volt Wall		SRV2326-131
12.11	Battery Pack		SRV2166-323
12.12	Module, Control IFT 2.0		SRV2564-130
12.13	Wire Harness		2166-304
12.14	AUX Module, IFT 2-ACM-AU		SRV2564-151
12.15	Power Cord Assembly		SRV2577-037
12.16	2 Gang Wire Harness		2166-316
12.17	Kapton Lens	Qty 2 req	2166-184
12.18	LED Glass	Qty 2 req	2166-163
12.19	Ember LED Gasket and Valve Plate Gasket	Must order Gasket Assembly 2118-080	
12.20	Bulkhead w/Flex Tube		SRV7000-156
12.21	Orifice NG (#40)		582-840
	Orifice Propane (#53)		582-853
	Orifice ULPG (#55)		582-855
12.22	Air Shutter		2118-121

Additional service part numbers appear on following page.



Service Parts

550X-AUB

Beginning Manufacturing Date: July 2025

Ending Manufacturing Date:Active

No one builds a better fire

IMPORTANT: THIS IS DATED INFORMATION. Parts must be ordered from a dealer or distributor. **Hearth and Home Technologies does not sell directly to consumers.** Provide model number and serial number when requesting service parts from your dealer or distributor.

[illegible]