

Log Set Assembly:
Models: CFL-24NG/LP
CFL-24NG/LP-B
CFL-24NG/LP-C

LOG PLACEMENT INSTRUCTIONS

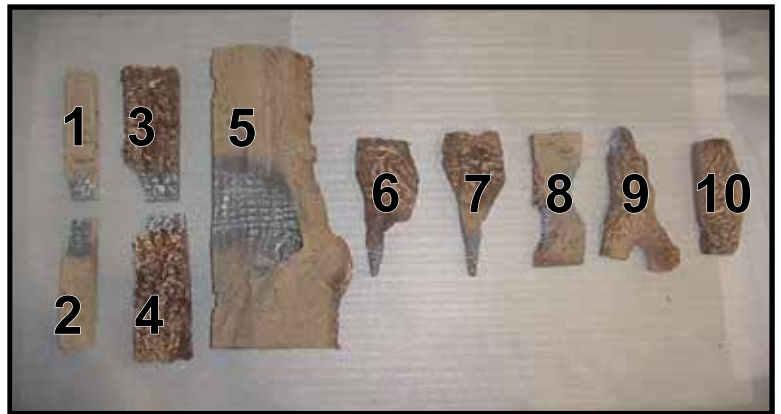
CAUTION: Carefully remove the logs from the packaging. Logs are fragile!

NOTICE: To simplify the installation process, positively identify each individual log before beginning installation.

NOTICE: Burner styles may vary.

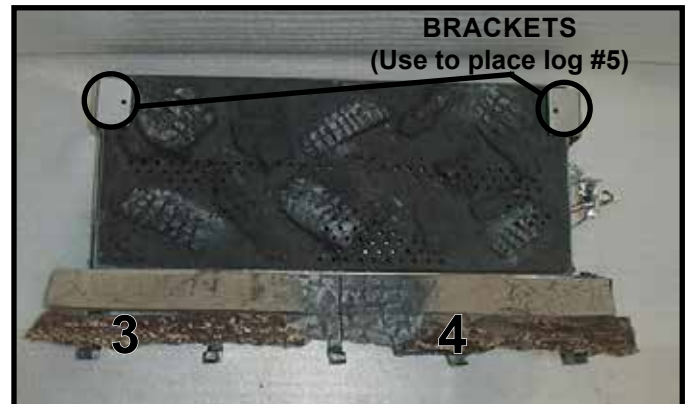
Follow the instructions for log placement using figures and instructions below. Use the “flat areas” indicated in the photos to guide you through the process. Use the log numbers to identify the logs. Check to make sure the tabs on the side of burner legs are bent outward. Set log grate by resting it down and sliding it toward burner.

Make sure right and left grate bars slide on outside of burner legs between tabs.



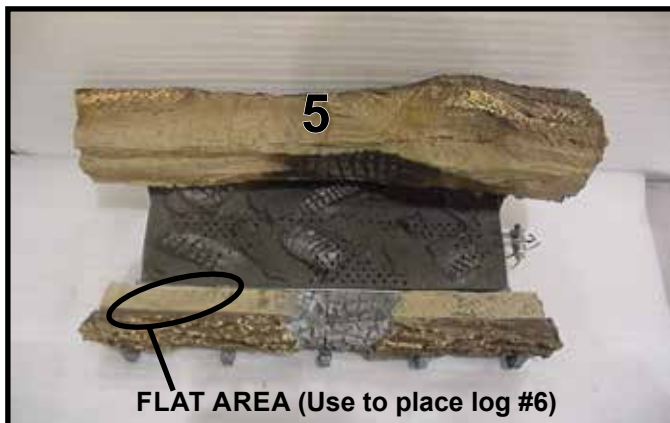
LOG #1 & #2: (SRV481-766)

Set logs #1 and 2 in front of the burner. Rest the bottom two notches over the extended material of the burner legs. Slide it towards the burner until it comes in contact with the burner.



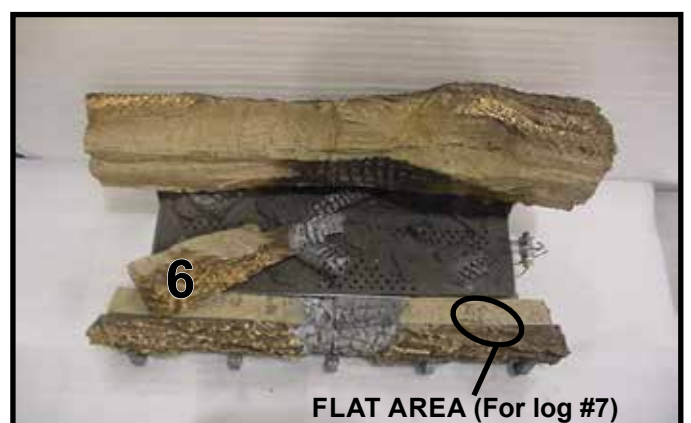
LOG #3 & #4: (SRV481-755)

Set logs #3 and #4 between the grate and logs #1 and 2 with the bark detail toward the outside. Logs #3 and #4 should be even with logs #1 and #2 from one side to the other. Slide grate to hold log in place.



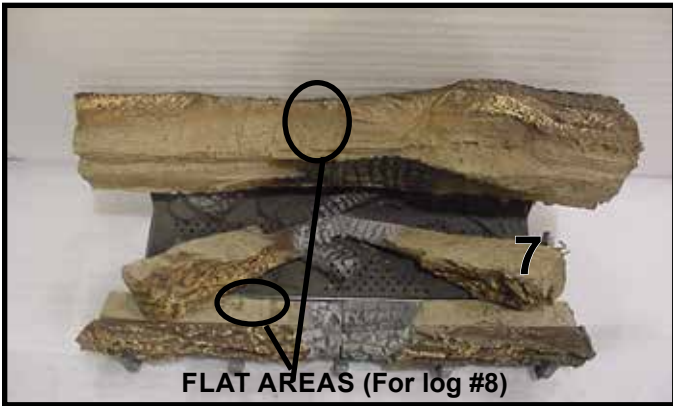
LOG #5: (SRV481-701)

This log sits toward the back on top of the brackets located on the right and the left. The two notches on the bottom of the log should rest over these brackets. The back of this log should line up with the back end of the brackets.



LOG #6: (SRV481-705)

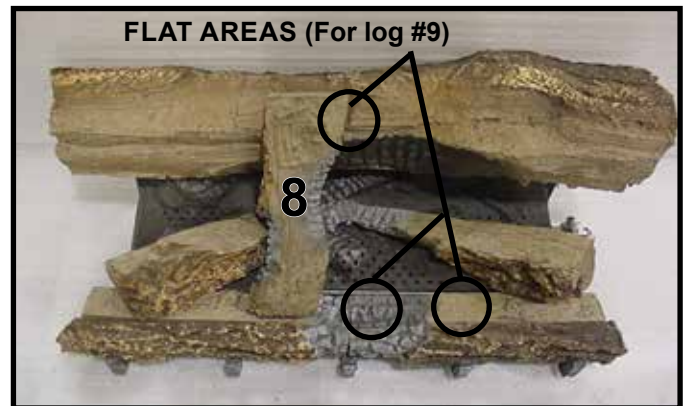
Set log #6 on the top of log #1 and the burner toward the left by following the flat area mark (on log #1). Make sure that the log will clear the ports on the top of the burner.



FLAT AREAS (For log #8)

LOG #7: (SRV446-702)

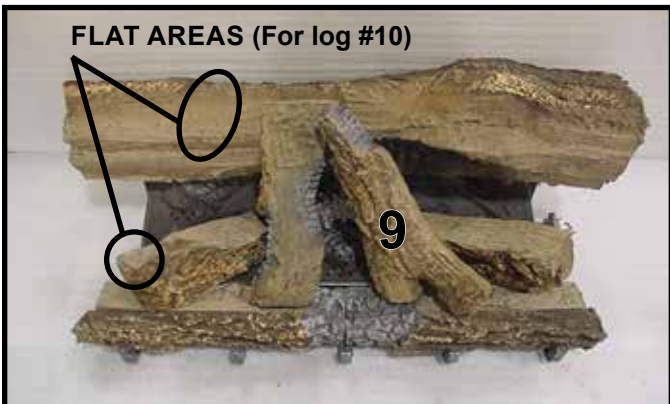
Set log #7 on the top of log #2 to the right (use flat area). The pointed end should be toward the center of the burner, and should rest underneath the pointed end of log #6. Tilt up log #6 to accommodate the placement of log #7. Make sure that the log will clear the ports on the top of the burner.



FLAT AREAS (For log #9)

LOG #8: (SRV481-703)

Hold log #8 with the bark detail toward the left. Lay the back end of this log on the right flat area located on the top of the back log. Rest the front end of this log on the flat area to the left of the burned area of log #1.



FLAT AREAS (For log #10)

LOG #9: (SRV402-701)

Hold log #9 with the pointed end towards the back and the bark detail towards the top. Set the front end on the flat areas of log #2 toward the right, then lay the back end (pointed end) onto the flat area of the corner of log #8.



LOG #10: (SRV446-706)

Hold log #10 with bark detail toward the top and the burned area toward the right. Set the back end of the log on the left flat area located on the top of log #5. Rest the front end of the log on the top flat area of log #6.

Install Mineral Wool

Remove the mineral wool from the packaging and place dime size pieces on the top of the burner, spaced a dime's width apart. Care should be taken to avoid placing ember material directly over ports and to avoid using excessive amounts of ember material.

WARNING! Risk of Explosion! Follow ember placement instructions. DO NOT place embers directly over burner ports. Replace ember material annually. Improperly placed embers interfere with proper burner operation.

- Embers CANNOT be placed directly over ports. Care should be taken not to cover the lighting trail of ports (from back to front).
- When placing Glowing Embers onto the burner care should be taken so that the ports are not covered. Place the dime-size ember pieces near the port holes in the burner top. Failure to follow this procedure will likely cause lighting and sooting problems.

Install Vermiculite

Vermiculite may be used for aesthetic enhancement, if desired. Sprinkle the vermiculite on the interior floor of the fireplace as shown in the figure below. Do not place vermiculite on burner. Care should be taken to avoid using excessive amounts of vermiculite.

WARNING! Risk of Explosion or Delayed Ignition! DO NOT place vermiculite on burner.



Place Vermiculite