

# LOG PLACEMENT INSTRUCTIONS

## Log Set Assembly: LOGS-294

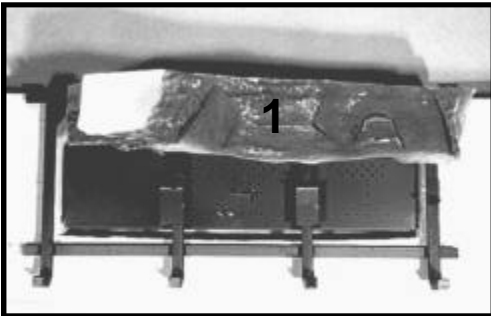
**Model: QV36**

**CAUTION:** Logs are fragile! Carefully remove the logs from the packaging. Pull metal base pan forward before setting logs in place.



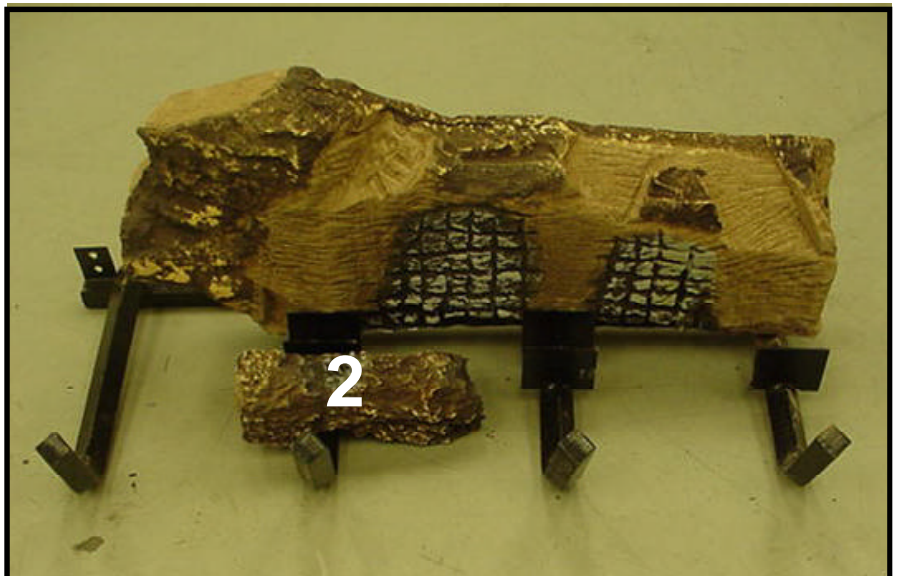
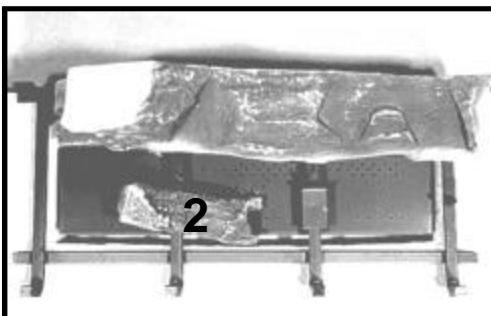
### STEP 1:

Place log #1 (SRV536-711) on the back of the grate, pull forward until it contacts the two rear locator tabs and place log notch over tab on the right side of the grate.



### STEP 2:

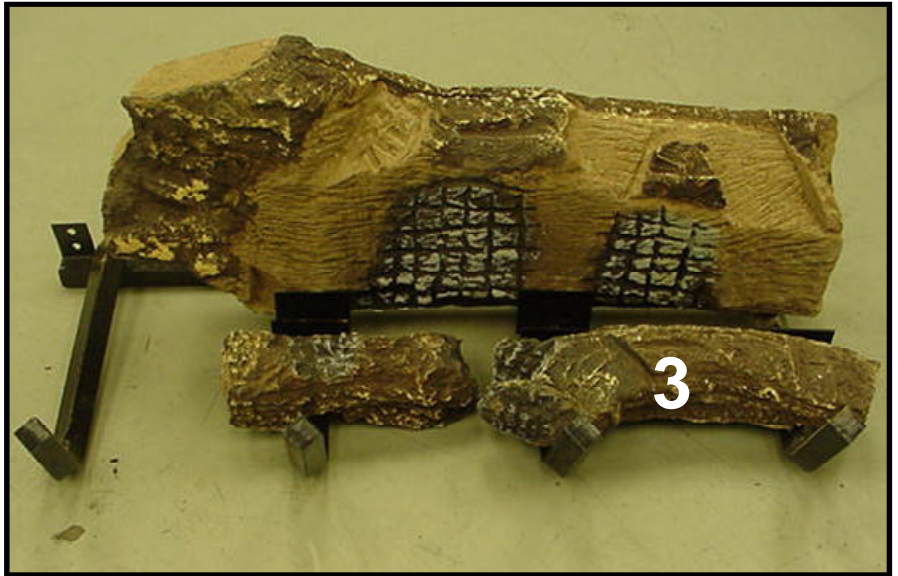
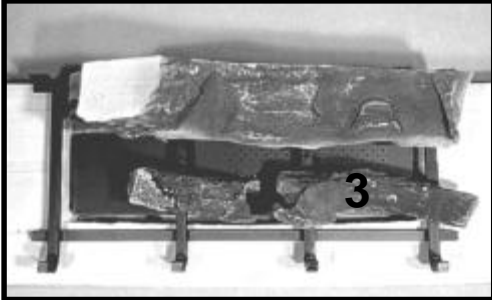
Align the slot in the bottom of log #2 (SRV536-705) with the second grate bar and rest the other end on the burner. Be sure the right end of log #2 is pushed back and to the right to contact the locator tab on the burner.





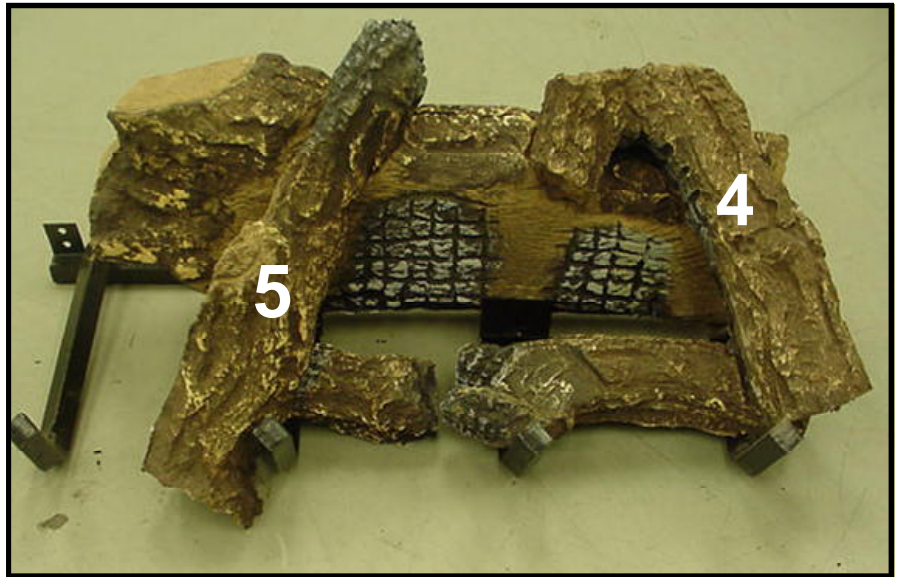
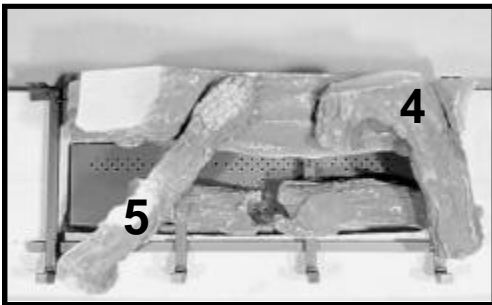
### STEP 3:

Align the slot in the right, bottom of log #3 (SRV536-706) with the fourth grate bar. Slide the log back until it contacts the two front log locator tabs.



### STEP 4:

Place log #4 (SRV536-704) on the flat spots of log #1 and log #3 as shown. Place the large end of log #5 (SRV536-718) on the edge of the grate bar and rest the burned end in the slot of log #1 as shown.



### STEP 5:

Place the burned end of log #6 (SRV446-715) on the flat spot of log #3 and rest the large end on the grate bar. Place the large end of log #7 (SRV446-714) on the flat spot of log #5 and rest the burned end on the refractory.

