

Figure 1



Figure 2. Log Placement Tabs

**CAUTION:** Logs are fragile, handle with care. **Log #1 (SRV2212-701):** Locate log placement tabs on the pilot cover (see Figure 2). Locate the log placements slots on the bottom of Log #1 (see Figure 3). Mate the slots located on the bottom of Log #1 with the log placement tabs on the pilot cover. Log #1 is properly installed when it sits squarely and completely on pilot cover with tabs engaged. See Figure 4.



Figure 3



Figure 4

Figure 4 shows the log placement tabs located on the top of Log #1. The tabs will be mated with the slots located on the bottom of Log #2 and Log #3 (see Figure 5). Log #2 and Log #3 also have grooves that allow the logs to be seated properly on the grate (see Figure 5). Hold Log #1 upright while placing Log #2 and Log #3.

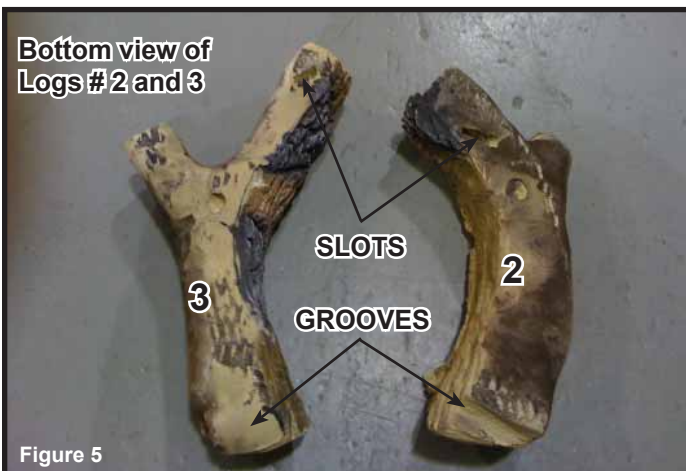


Figure 5

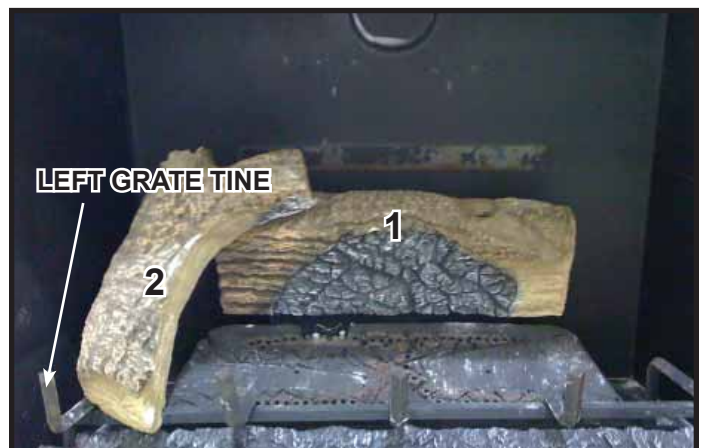


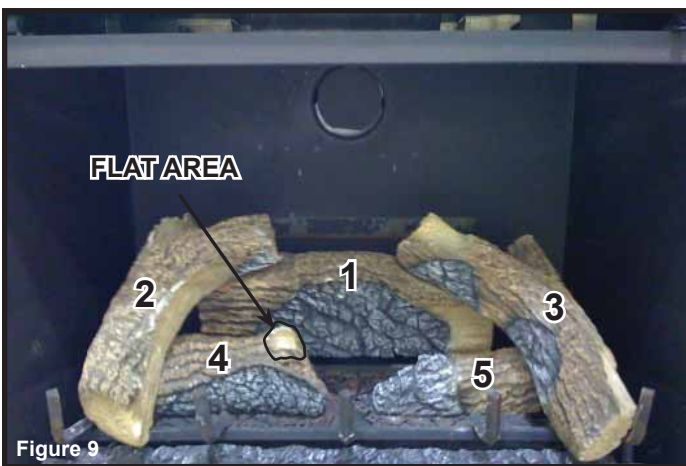
Figure 6

**Log #2 (SRV2212-702):** Mate the slot located on the bottom of Log #2 with the left log placement tab on top of Log #1. After slot and tab have been fitted together, mate the groove located on the bottom of Log #2 with the horizontal grate bar and slide Log #2 toward the left until it rests against the far left grate tine. See Figure 6.



**Log #3 (SRV2212-703):** Mate the slot located on the bottom of Log #3 with the right log placement tab on top of Log #1. After slot and tab have been fitted together, mate the groove located on the bottom of Log #3 with the horizontal grate bar and far right grate tine. Log #3 will sit down on top of both the grate tine and the horizontal grate bar (see Figure 7).

**Log #4 (SRV2168-724):** Place Log #4 in the left log placement indentation on the burner top (see Figure 2). Slide Log #4 from right to left under Log #2 to fit completely and securely into the log placement indentation (see Figure 8). The back of Log #4 should rest against the far left grate tine as well as contact Log #2.



**Log #5 (SRV2212-705):** Place Log #5 in the right log placement indentation on the burner top (see Figure 2). Ensure the log fits completely and securely in the recessed log placement indentation (see Figure 9). Log #5 should be pulled to the left hand side of log placement indentation.

**Log #6 (SRV2212-706):** Mate the groove located on the lower end of Log #6 with the fourth tine (from left to right) as shown in Figure 10. Set the other end of Log #6 on the flat area located on top of Log #4 (see Figure 9 and 10). Log #6 will also rest against the center grate tine. When properly installed, Log #6 will rest securely on all 3 contact points, not allowing movement or shifting.