

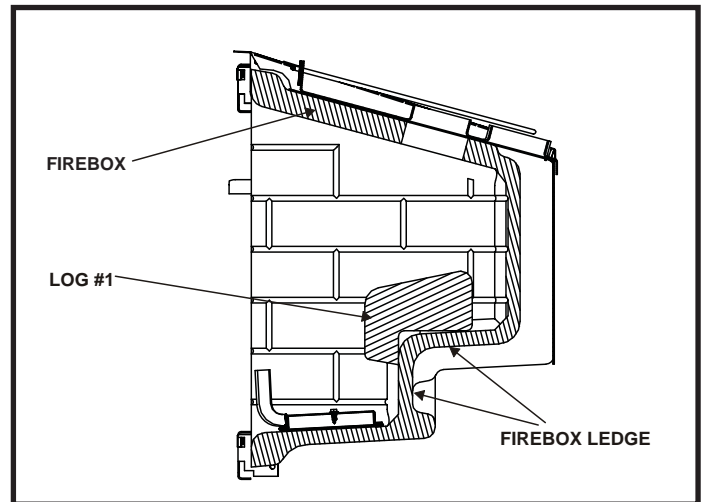
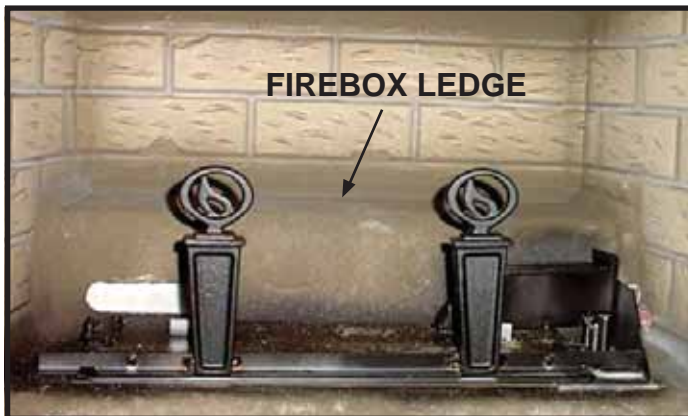
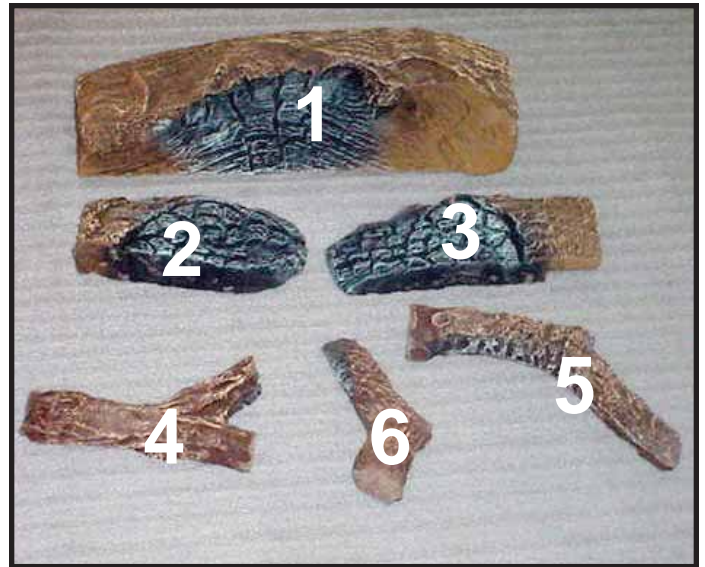
Log Set Assembly: LOGS-2031

Models: QVI-25FB, QVI-25FB-S

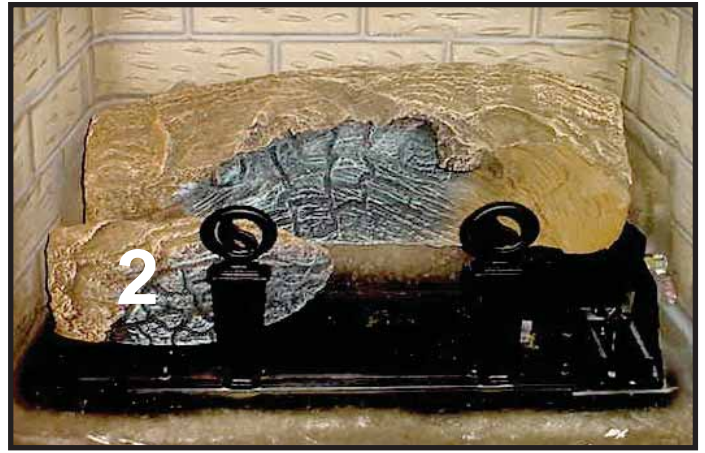
LOG PLACEMENT INSTRUCTIONS

Log Placement

CAUTION: Logs are fragile! Carefully remove the logs from the packaging.



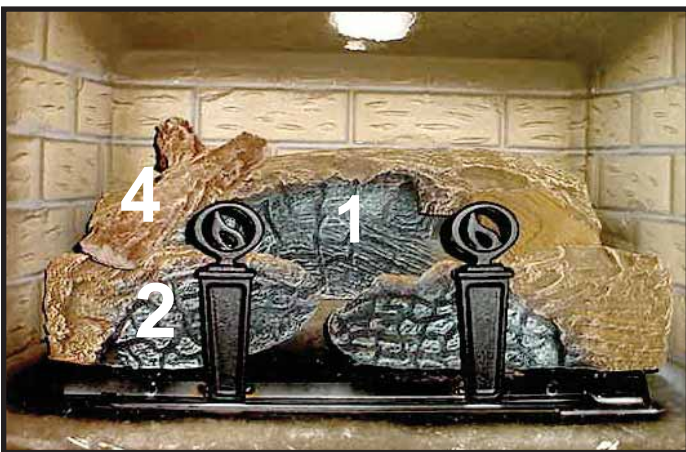
LOG #1 (SRV2032-701): Place log #1 on the firebox ledge as shown. The front portion of the log should hang over the ledge as shown. The log should be placed all the way back and in the center of the ledge.



LOG #2 (SRV2032-702): Position log #2 by locating its slot over the tabs on left front of the burner.



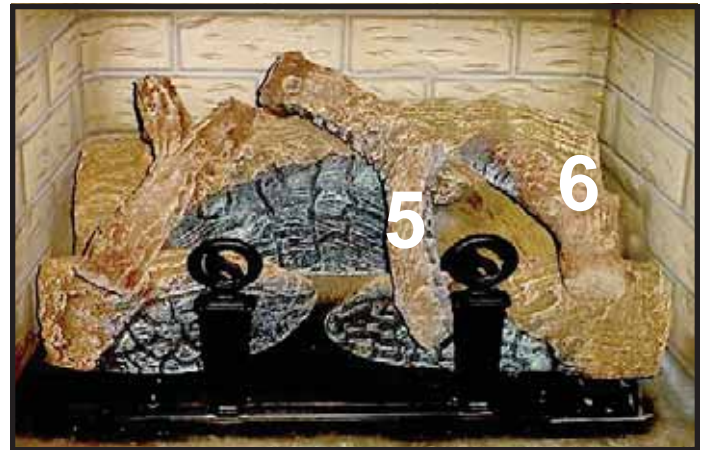
LOG #3 (SRV2032-703): Position log #3 by locating its slot over the tab on right front of the burner such that left end of log contacts log tab near the center of the burner.



LOG #4 (SRV340-704): Place log #4 across log #1 and log #2 in the grooved out areas as shown.



LOG #5 (SRV340-705): Place log #5 across log #1 and log #3 in the grooved out areas as shown.



LOG #6 (SRV740-707): Place log #6 across log #1 and log #3 in the grooved out areas as shown.