

## NNXT Upgrade Kit NNXT4236-B-KIT, NNXT3933-B-KIT

Models: NNXT3933IF-B, NNXT3933ILF-B, NNXT4236IF-B, NNXT4236ILF-B

**CAUTION! Risk of Cuts, Abrasions or Flying Debris.**  
Wear protective gloves and safety glasses during installation. Sheet metal edges are sharp.



**HOT GLASS WILL CAUSE BURNS.**  
**DO NOT TOUCH GLASS UNTIL COOLED.**

**NEVER ALLOW CHILDREN TO TOUCH GLASS.**

A barrier designed to reduce the risk of burns from the hot viewing glass is provided with this appliance and shall be installed for the protection of children and other at-risk individuals.

### KIT CONTENTS:

- A. Embers
- B. Flue Visor
- C. Hearth Pan
- D. False Back
- E. Pilot Shield
- F. Logs
- G. Refractory

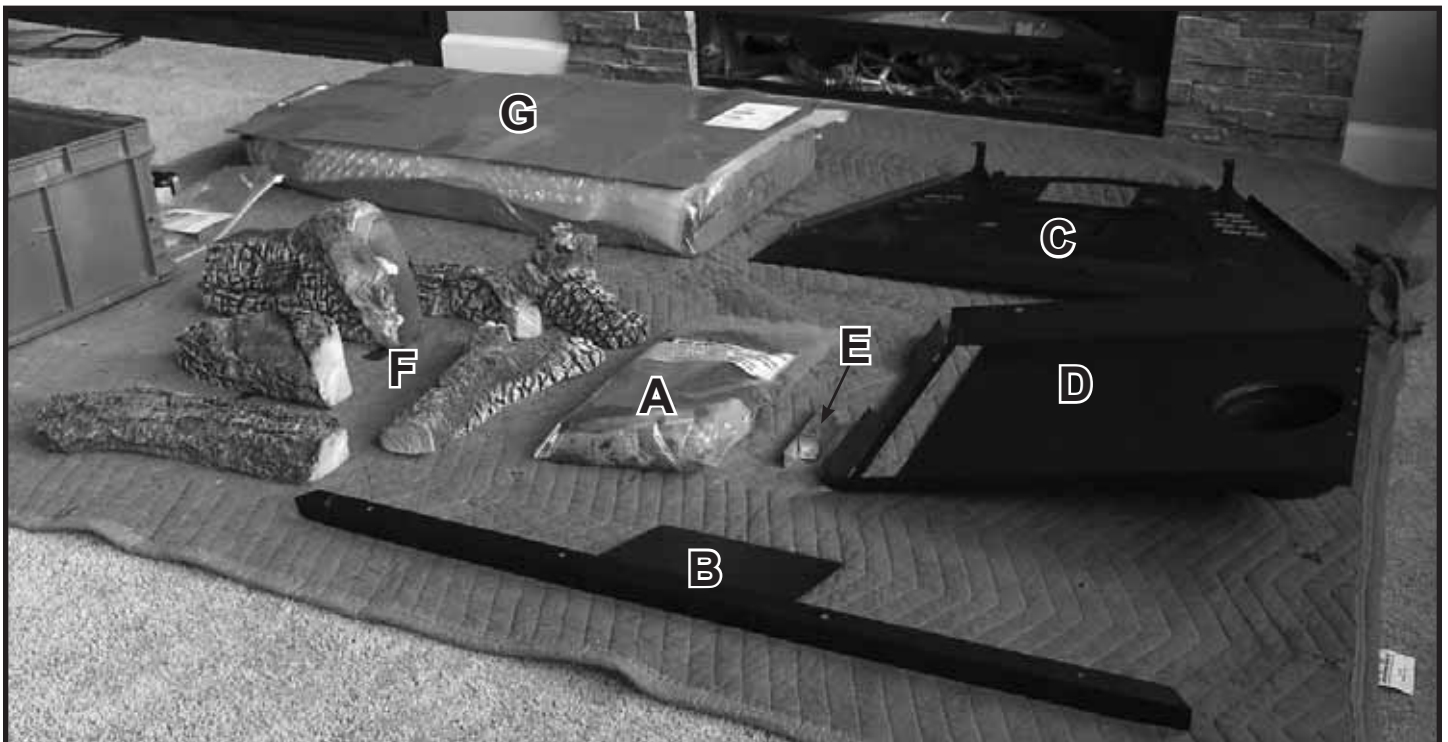


Figure 1. Kit Contents

1. Remove the hearth pan and log set. See Figure 2.



Figure 2.

2. Remove the pilot shield. See Figure 3.



Figure 3.

3. Remove the flue visor. See Figure 4.



Figure 4.

4. Remove the false back. See Figure 5.



Figure 5.

5. Install the logs on the hearth pan as shown below:

See Table 1 for corresponding log set and individual logs for each size Novus model.

SIZE	3933	4236
<b>ASSEMBLY</b>	SRV2384-070	SRV2385-070
<b>LOG 1</b>	SRV2384-071	SRV2384-071
<b>LOG 2</b>	SRV2380-072	SRV2381-072
<b>LOG 3</b>	SRV2384-073	SRV2385-073
<b>LOG 4</b>	SRV2380-074	SRV2382-074
<b>LOG 5</b>	SRV2384-075	SRV2385-075
<b>LOG 6</b>	SRV2384-076	SRV2385-076

Table 1.

**CAUTION:** Logs are fragile, handle with care.

See Figure 1 for locations of fasteners for each log.

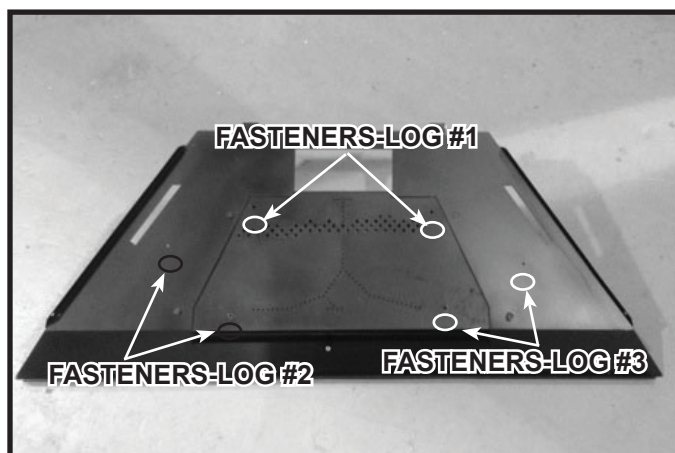


Figure 6. Log Fastener Locations on Base Pan



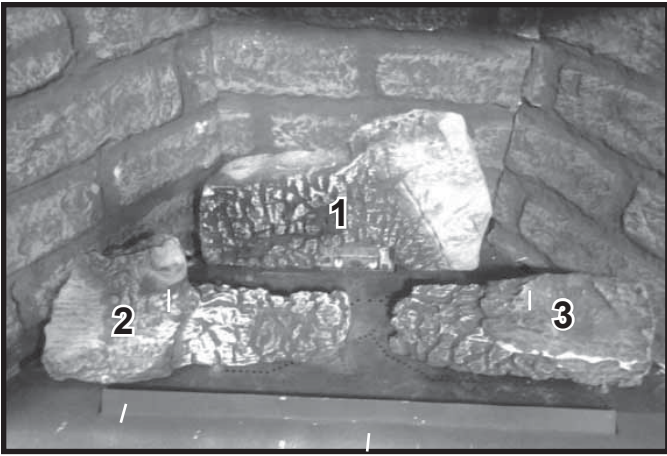


Figure 7. Log Set Shown Assembled

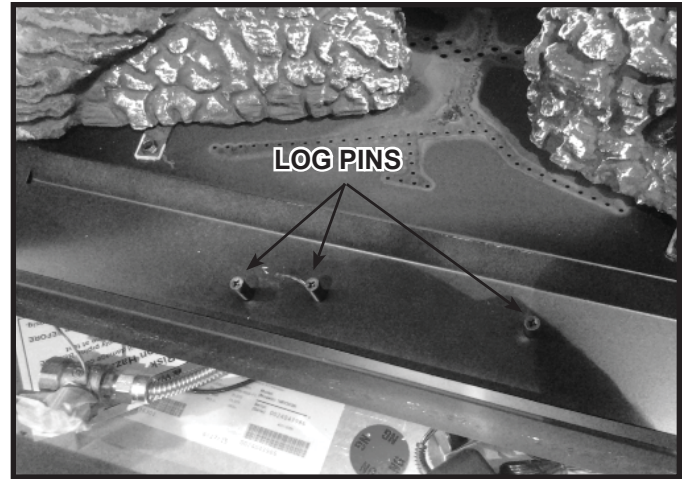


Figure 10. Log Pin Locations

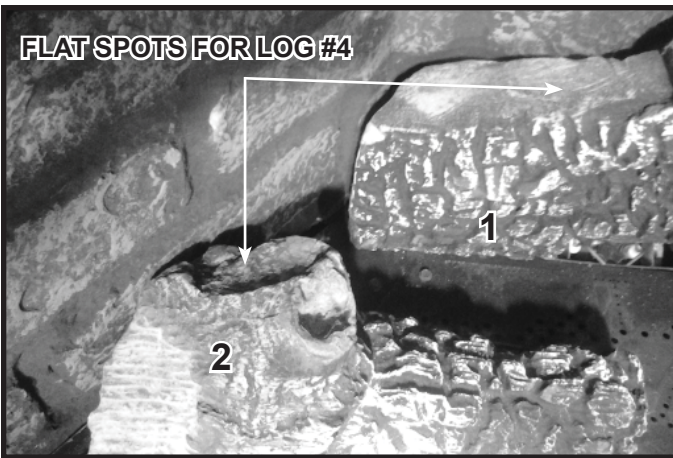


Figure 8. Locations of Flat Spots for Log #4

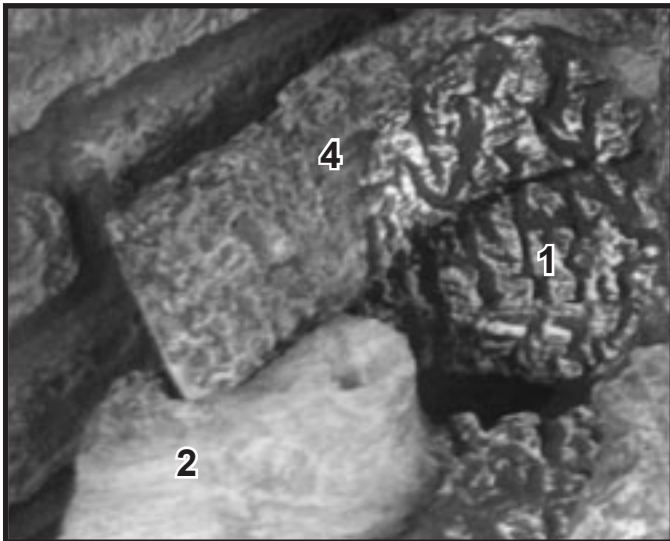


Figure 9. Log #4 in Position

**LOG #4:** Place Log #4 into position by setting the left end of Log #4 into the flat spot on Log #2 and then resting the right end, or nose, of Log #4 on the flat spot on Log #1. Figure 3 shows locations of flat spots. Figure 4 shows Log #4 installed.

**Log #5:** Place Log #5 into position. The forked end of Log #5 is positioned on the log pins as shown in Figure 11. The back end of Log #5 will rest on Log #4, but does not touch Log #1.

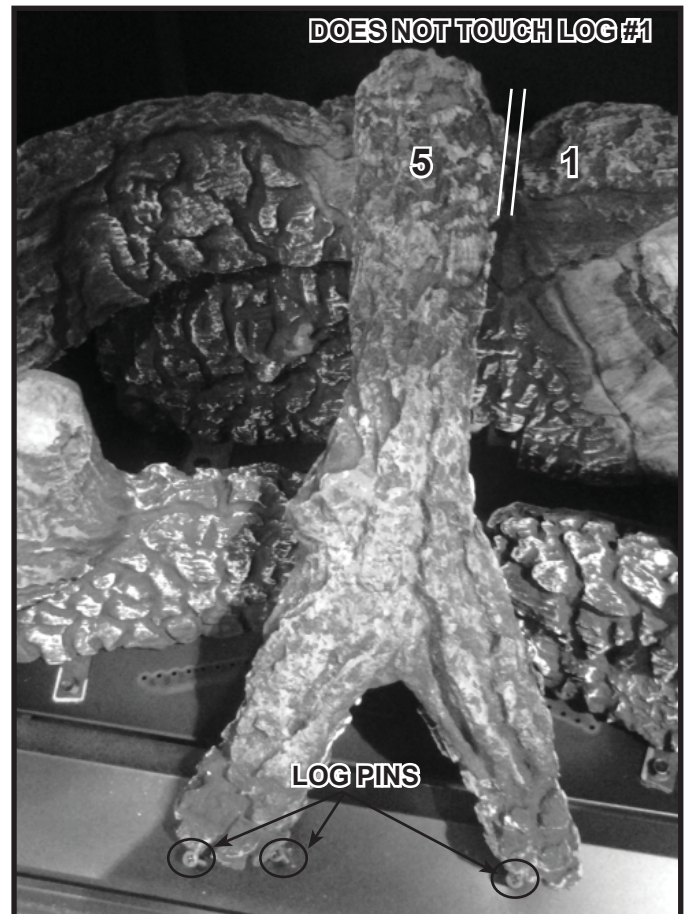


Figure 11. Log #5 in Position



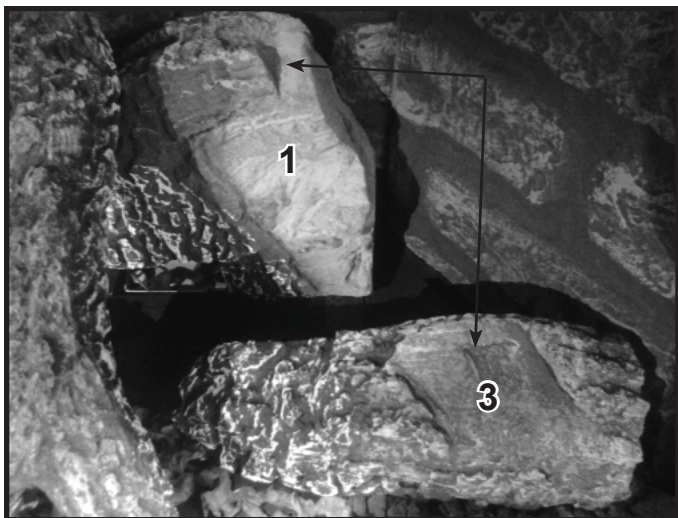


Figure 12. Locations of Flat Spots for Log #6

**Log #6:** Place Log #6 into position by setting the large end on the flat spot in Log #3 and then resting the small end on the flat spot on Log #1.

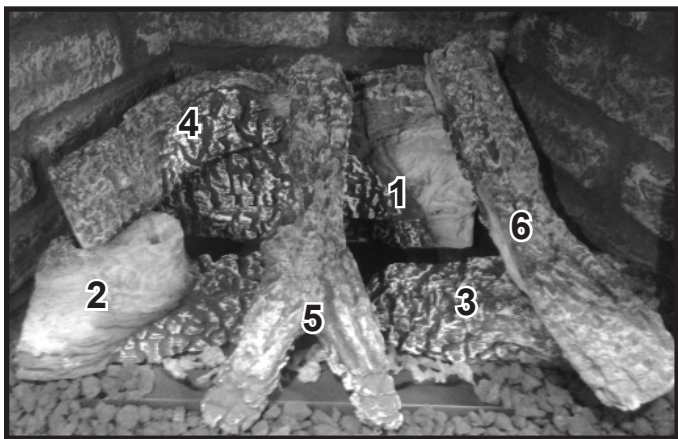


Figure 13. Log Set Installed

6. Assemble new false back. See Figure 14.



Figure 14.

7. Install new flue visor. See Figure 15.



Figure 15.

8. Install pilot shield. Pilot shield is assembled on top of pilot assembly. See Figure 16.

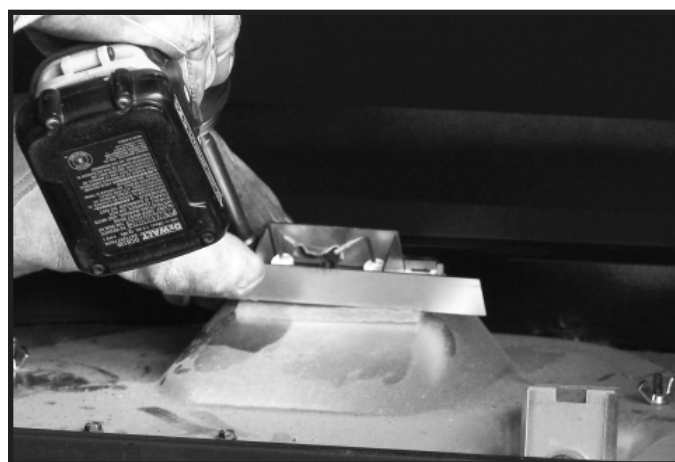


Figure 16.

9. Install hearth pan. Place into appliance.

10. Add embers and lava rock following the instructions in the appliance installation manual.

11. Install the two top logs as shown in the log instructions on previous pages.



Figure 17.

Heatilator, a brand of Hearth & Home Technologies  
 7571 215th Street West, Lakeville, MN 55044  
[www.heatilator.com](http://www.heatilator.com)