

MESH-RETRO1928, MESH-RETRO2819, MESH-RETRO3028, MESH-RETRO3121, MESH-RETRO3625, MESH-RETRO4226, MESH-RETRO2125 Mesh Safety Barrier Instructions



Leave this manual with party responsible for use and operation.

⚠ WARNING



HOT SURFACES!

Glass and other surfaces are hot during operation AND cool down.

Hot glass will cause burns.

- **DO NOT** touch glass until it is cooled
- **NEVER** allow children to touch glass
- Keep children away

- **CAREFULLY SUPERVISE** children in same room as fireplace.
- Alert children and adults to hazards of high temperatures.

High temperatures may ignite clothing or other flammable materials.

- Keep clothing, furniture, draperies and other flammable materials away.

This appliance has been supplied with an integral barrier to prevent direct contact with the fixed glass panel. DO NOT operate the appliance with the barrier removed.

Contact your dealer or Hearth & Home Technologies if the barrier is not present or help is needed to properly install one.

This kit has adjustable top brackets that are designed to hook into the top louver assembly.

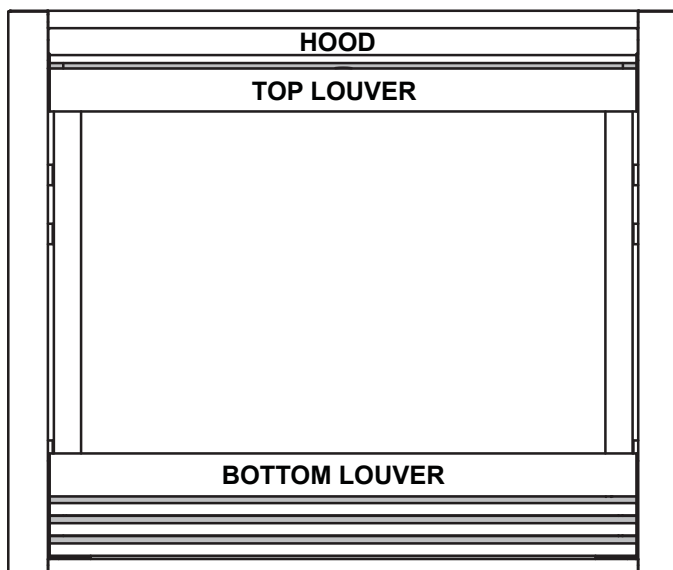


Figure 1. Fireplace Front (Generic-Not a Specific Model)

The top and bottom brackets will ship in a flat position and must be bent. See Figure 2. The brackets are intended to be bent by hand, but a needle-nose pliers may also be used.

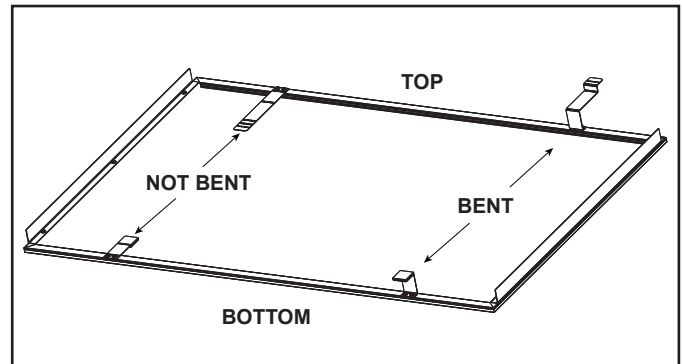


Figure 2. Mesh Bracket Locations

1. Bend two bottom brackets as shown in Figure 3.

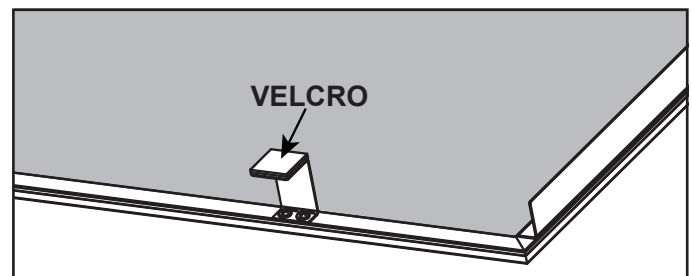


Figure 3. Bend Bottom Brackets

2. Bend top bracket as shown in Figure 4.

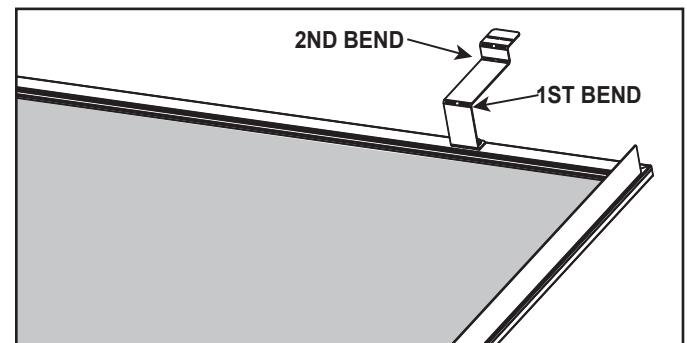


Figure 4. Bend Top Brackets

- The top brackets are adjustable so that they may accommodate different decorative fronts and louver styles. Figure 5 illustrates two methods of bending the top bracket. The method labeled "A" will accommodate most fireplace applications.

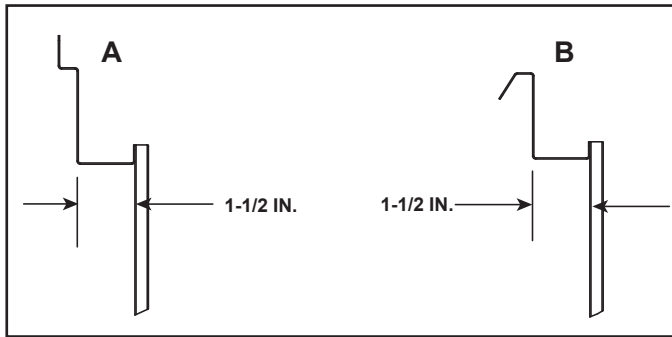


Figure 5. Top Bracket Bending Methods - Side View

- Remove the plastic backing on the 1 inch square velcro pieces attached to bottom brackets. These velcro pieces will secure the mesh assembly to the bottom louver.
- Attach mesh assembly by inserting the top brackets into the top louver. Ensure that the mesh is centered (left to right) before securing the velcro. See Figure 6.

NOTE: Tilt the top of the mesh assembly forward as you move it into position. The mesh will tilt more if using Method A (above). If using Method B, it will "hook" into place.

When installed correctly, the mesh frame will be located 1-1/2 inches away from the decorative front or louver. See Figure 6.

Cleaning Instructions for Universal Mesh

The universal mesh may be removed for cleaning. Remove when fireplace is turned off and cooled. Dust with a microfiber or other soft cloth and replace on fireplace. For instructions on glass cleaning, see appliance installation manual.

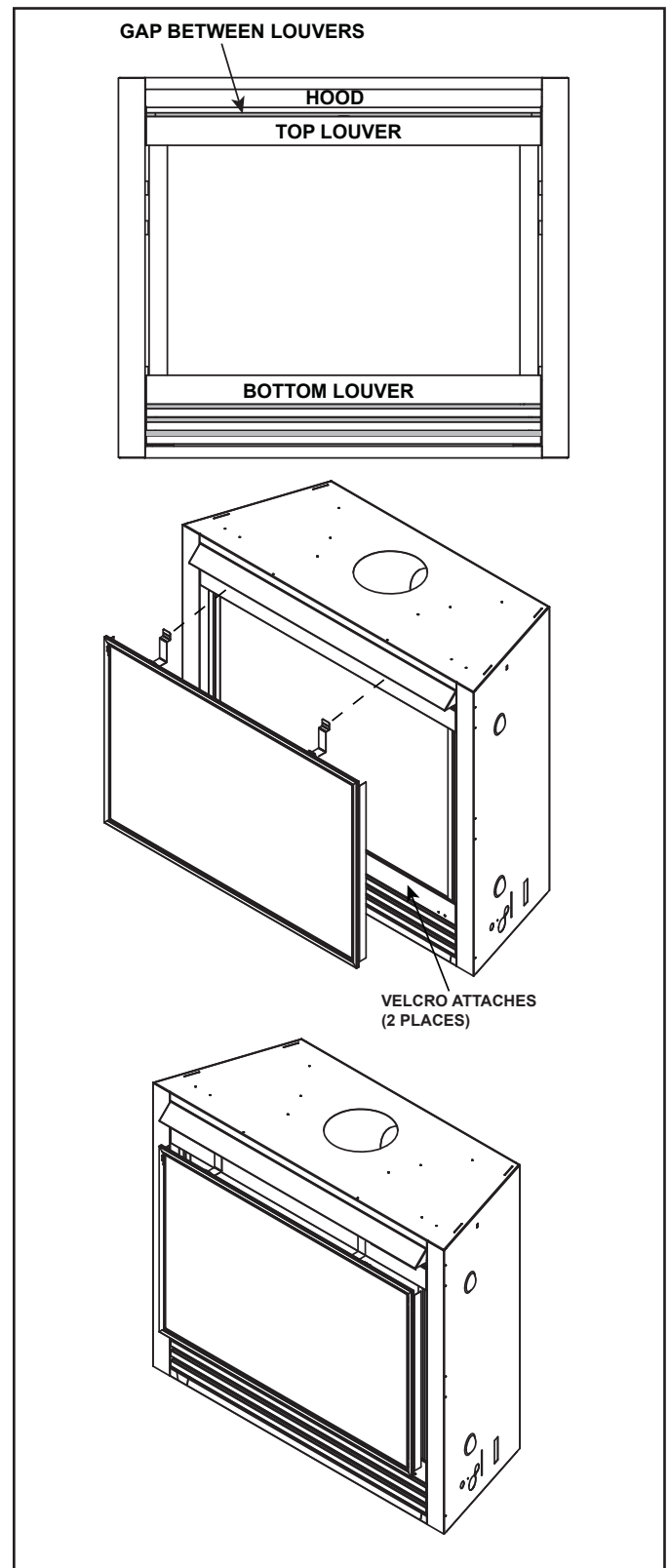


Figure 6. Installing Mesh

Please contact your Hearth & Home Technologies dealer with any questions or concerns.
For the location of your nearest Hearth & Home Technologies dealer, please visit www.hearthnhome.com.

Hearth & Home Technologies
7571 215th Street West, Lakeville, MN 55044
www.hearthnhome.com