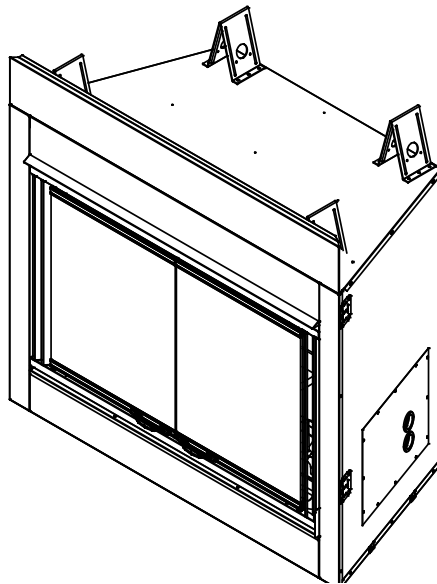


Model:
Dakota 42-CE



Installer's Guide

Installation and Operation

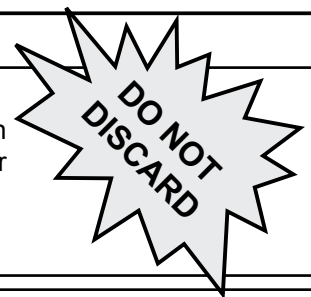
CE
0087

CAUTION



DO NOT DISCARD THIS MANUAL

- Important operating and maintenance instructions included.
- Read, understand and follow these instructions for safe installation and operation.
- Leave this manual with party responsible for use and operation.



⚠ WARNING



If the information in these instructions is not followed exactly, a fire may result causing property damage, personal injury, or death.

- Do not store or use gasoline or other flammable vapors and liquids in the vicinity of this or any other fireplace.
- **What to do if you smell gas:**
 - Do not try to light any fireplace.
 - Do not touch any electrical switch. Do not use any phone in your building.
 - Immediately call your gas supplier from a neighbor's phone. Follow the gas supplier's instructions.
 - If you cannot reach your gas supplier, call the fire department.
- Installation and service must be performed by a qualified installer, service agency, or the gas supplier.

⚠ WARNING



HOT SURFACES!

Glass and other surfaces are hot during operation and cool down.

Hot glass will cause burns.

- Do not touch glass until it is cooled
- NEVER allow children to touch glass
- Keep children away
- CAREFULLY SUPERVISE children in same room as appliance.
- Alert children and adults to hazards of high temperatures.
- **High temperatures may ignite clothing or other flammable materials.**
- Keep clothing, furniture, draperies and other combustibles away.

These instructions are only valid if the following country symbol is on the fireplace. If this symbol is not present on the fireplace, it is necessary to refer to the technical instructions which will provide the necessary information concerning the modification of the fireplace to the conditions of use for the country.

Note: This fireplace is intended for outdoor use only.

These instructions are valid for the following countries:
GB, IE

**Read this manual before installing or operating this fireplace.
Please retain this owner's manual for future reference.**

Congratulations

Congratulations on selecting a Outdoor Lifestyles gas fireplace—an elegant and clean alternative to wood burning fireplaces. The Outdoor Lifestyles gas fireplace you have selected is designed to provide the utmost in safety, reliability, and efficiency.

As the owner of a new fireplace, you'll want to read and carefully follow all of the instructions contained in this owner's manual. Pay special attention to all cautions and warnings.

This appliance must be installed in accordance with the **Gas Safety (installation and use) Regulations**. For Ireland, **IS. 8.1.3 Domestic Gas Installation**.

This owner's manual should be retained for future reference. We suggest you keep it with your other important documents and product manuals.

The information contained in this owner's manual, unless noted otherwise, applies to all models and gas control systems.

Your new Outdoor Lifestyles gas fireplace will give you years of durable use and trouble-free enjoyment. Welcome to the Outdoor Lifestyles family of fireplace products!

Homeowner Reference Information

We recommend that you record the following pertinent information about your fireplace:

Model Name: _____ Date purchased/installed: _____

Serial Number: _____ Location on fireplace: _____

Dealership purchased from: _____ Dealer phone: _____

Notes: _____

Table of Contents

| | | | |
|---|-----------|---|-----------|
| 1 Listing and Code Approvals | 4 | 9 Fireplace Setup | 13 |
| A. Fireplace Certification | 4 | A. Clean the Fireplace | 13 |
| 2 Getting Started | 4 | B. Grate Assembly Placement | 13 |
| A. Design and Installation Considerations | 4 | C. Positioning the Logs | 13 |
| B. Inspect Fireplace and Components | 4 | D. Glass Assembly | 16 |
| 3 Framing and Clearances | 5 | E. Placing Lava Rock | 16 |
| A. Select Fireplace Location | 5 | F. Reinstall Door Lock | 16 |
| B. Clearances | 6 | 10 Operating Instructions | 17 |
| C. Mantel Projections | 6 | A. Before Lighting Fireplace | 17 |
| 4 Fireplace Locations | 7 | B. Lighting the Fireplace | 18 |
| A. Fireplace Minimum Clearances | 7 | C. After the Fireplace is Lit | 19 |
| 5 Fireplace Preparation | 8 | D. Frequently Asked Questions | 19 |
| A. Remove Logs and Shipping Cover | 8 | 11 Maintaining and Servicing the Fireplace | 20 |
| B. Securing and Leveling Fireplace | 8 | A. Valve Access and Service | 21 |
| 6 Gas Information | 9 | B. Battery Replacement | 22 |
| A. Gas Pressure Requirements | 9 | C. Maintenance and Service Tasks | 23 |
| B. Gas Connection | 9 | 12 Troubleshooting | 24 |
| 7 Electrical Information | 10 | A. Electronic Ignition System | 24 |
| A. Ignition System Wiring | 10 | 13 Reference Materials | 25 |
| B. Remote Control | 10 | A. Fireplace Dimension Diagram | 25 |
| 8 Finishing | 11 | B. Service Parts List | 26 |
| A. Mantel Projections | 11 | C. Warranty | 30 |
| B. Facing Material | 12 | D. Contact Information | 32 |

Note: An arrow (➡) found in the text signifies change in content.

1 Listing and Code Approvals

A. Fireplace Certification

MODEL: Dakota 42-CE
LABORATORY: Advantica
TYPE: Outdoor Gas Fireplace
STANDARD: BS EN 509•2000 & EN 14543 Sept. 2002
DIRECTIVE: GAD 90/1396/EEC

WARNING

Do NOT use this fireplace if any part has been under water. Immediately call a qualified service technician to inspect the fireplace and to replace any part of the control system and any gas control which has been under water.

2 Getting Started

A. Design and Installation Considerations

Before installation check that local distribution conditions, nature of gas and pressure, and adjustment of the fireplace are compatible.

This fireplace must be installed with the rules in force, and used only in a sufficiently ventilated space. Consult instructions before installation and use of this fireplace.

- Carefully remove the fireplace and components from the packaging.
- The gas logs are be packaged separately and must be field installed.
- Report to your dealer any parts damaged in shipment, particularly the condition of the glass.
- Read all of the instructions before starting the installation. Follow these instructions carefully during the installation to ensure maximum safety and benefit.

B. Inspect Fireplace and Components

WARNING



Inspect fireplace and components for damage. Damaged parts may impair safe operation.



- Do NOT install damaged components.
 - Do NOT install incomplete components.
 - Do NOT install substitute components.
- Report damaged parts to dealer.

WARNING



Hearth & Home Technologies disclaims any responsibility for, and the warranty will be voided by, the following actions:

- Installation and use of any damaged fireplace or component.
- Modification of the fireplace.
- Installation other than as instructed by Hearth & Home Technologies.
- Improper positioning of the gas logs or the glass door.
- Installation and/or use of any component part not approved by Hearth & Home Technologies.

Any such action may cause a fire hazard.

3 Framing and Clearances

Note:

- Illustrations reflect typical installations and are FOR DESIGN PURPOSES ONLY.
- Illustrations/diagrams are not drawn to scale.
- Actual installation may vary due to individual design preference.

A. Select Fireplace Location

When selecting a location for your fireplace it is important to consider the required clearances to walls (See Figure 3.1).

WARNING



Fire Risk

Provide adequate clearance:

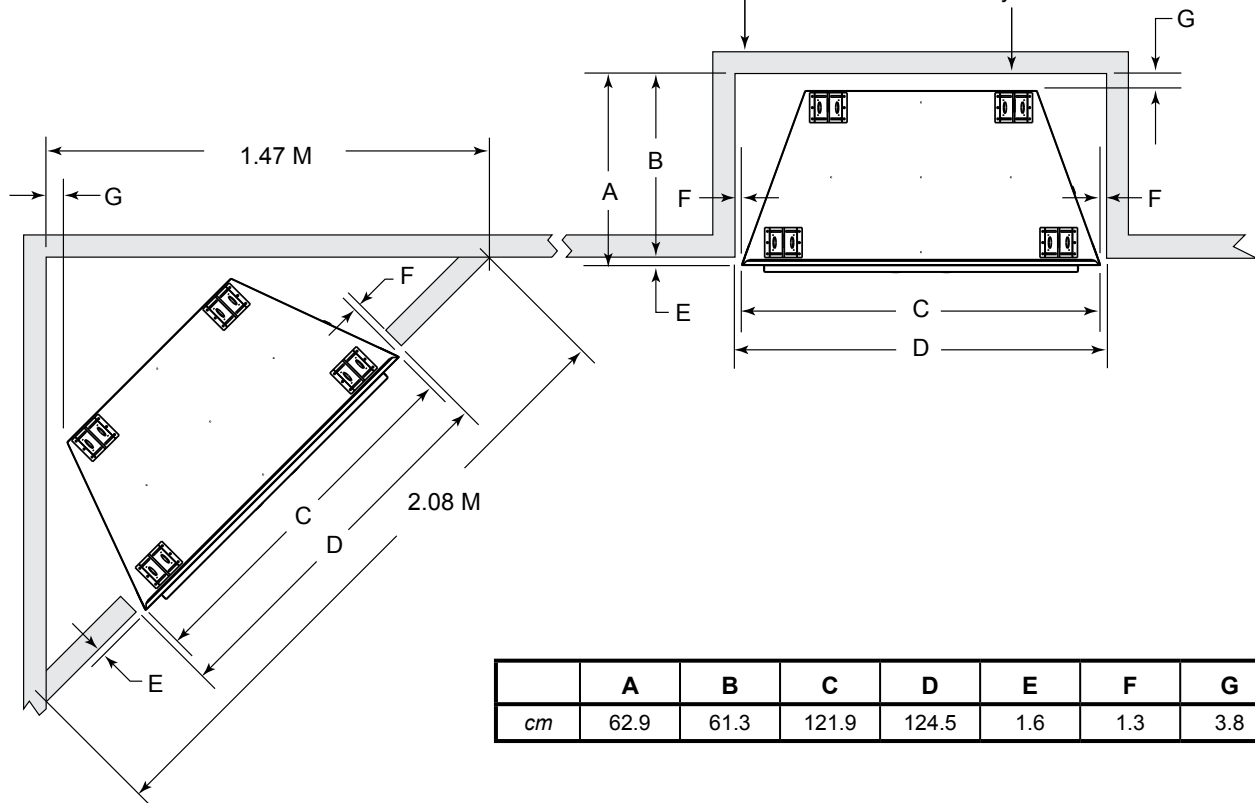
- Around air openings.
- To combustibles.
- For service access.

Locate fireplace away from traffic areas.

Note: For actual fireplace dimensions refer to Section 13.

Note: If this surface is inside the building's warm air envelope...

...then this surface must be an exterior wall system.



| | A | B | C | D | E | F | G |
|----|------|------|-------|-------|-----|-----|-----|
| cm | 62.9 | 61.3 | 121.9 | 124.5 | 1.6 | 1.3 | 3.8 |

Figure 3.1 Fireplace Locations

WARNING

Fire Risk Odor Risk



- Install fireplace on hard metal or wood surfaces extending full width and depth of fireplace.
- Do NOT install fireplace directly on carpeting, vinyl, tile or any combustible material other than wood.

WARNING



Fire Risk

- Locate and install fireplace to all clearance specifications in manual.

B. Clearances

- Appliance must be installed in amply insulated area.
- Area must have minimum of 25% of surface area open.
- Surface area = sum of walls surface.

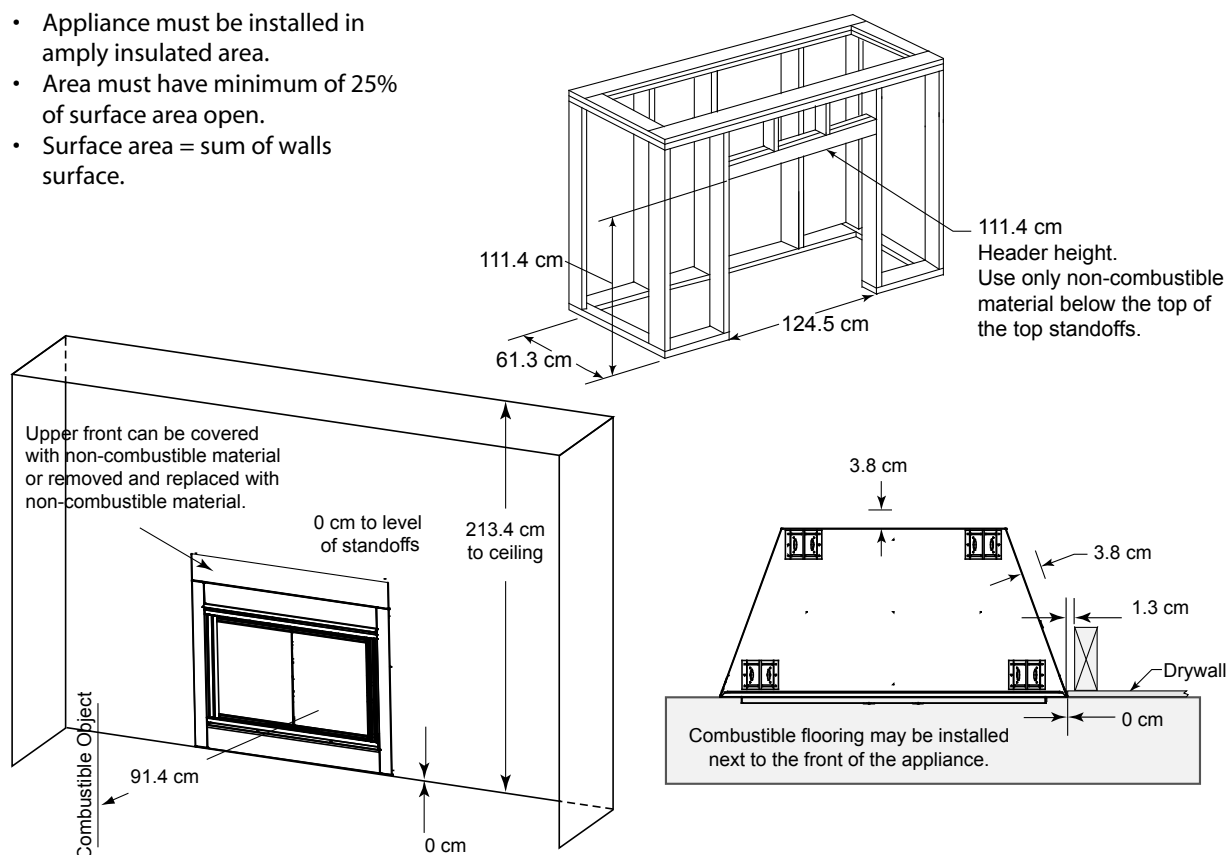


Figure 3.2 Framing Dimensions

C. Mantel Projections

| | If A is: | Then B must be at least: |
|----|--------------|--------------------------|
| cm | 15.2 - 91.4 | 66 |
| cm | 91.4 or more | 45.7 |

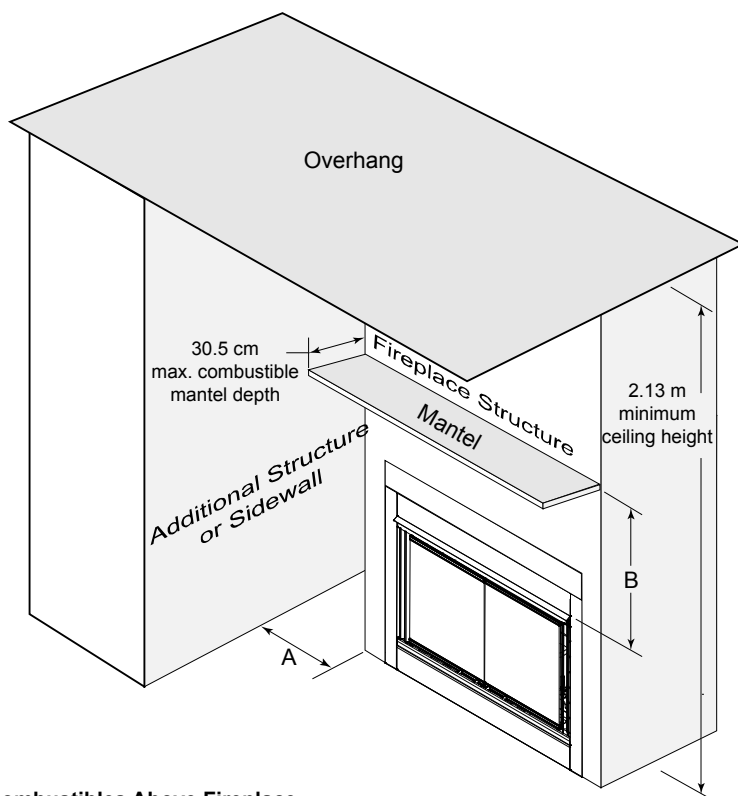
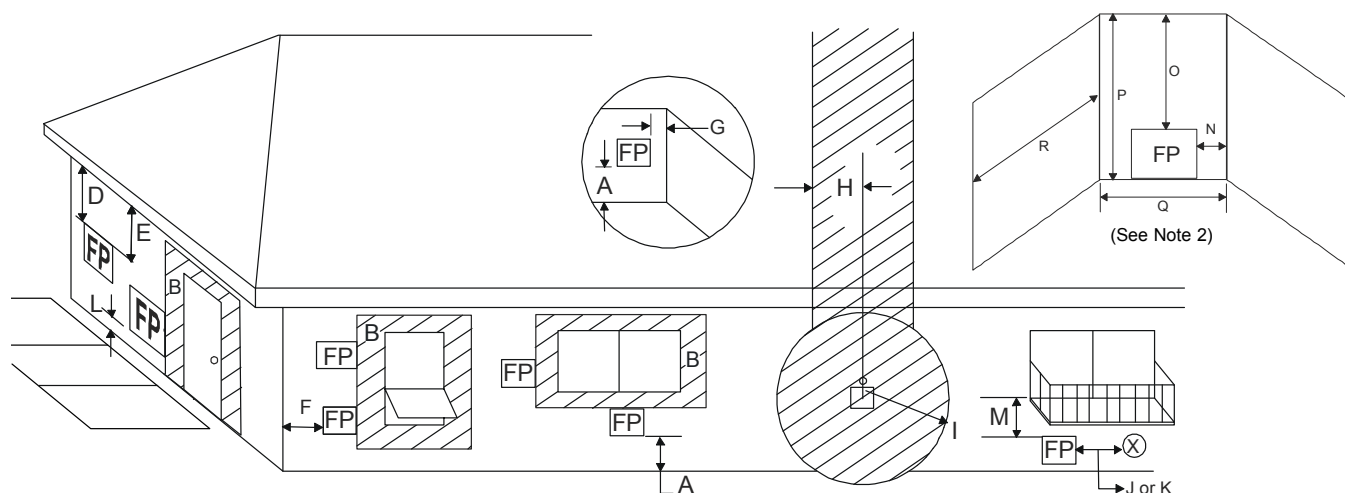


Figure 3.3 Clearances to Combustible Mantels or Other Combustibles Above Fireplace

4 Fireplace Locations

A. Fireplace Minimum Clearances



FP = FIREPLACE OPENING **(X)** = AIR SUPPLY INLET **[Hatched Area]** = AREA WHERE FIREPLACE IS NOT PERMITTED

| | | | | | |
|-----|----------------------|---|-------|------------------------|--|
| A | = 0 cm | clearances above grade, veranda, porch, deck or balcony. | J | = 22.8 cm | clearance to non-mechanical air supply inlet to building or the combustion air inlet to any other appliance. |
| B | = 30.5 cm | clearances to window or door that may be opened, or to permanently closed window. | K | = 91.4 cm | clearance to a mechanical air supply inlet. |
| | 91.4 cm | vinyl windows or siding. | L*** | = 2.1 M | clearance above paved sidewalk or a paved driveway located on public property. |
| D** | = 119.3 cm | vertical clearance to unventilated soffit or to ventilated soffit located above the terminal. | M**** | = 119.3 cm | clearance under veranda, porch, deck, balcony or overhang. |
| | 152.4 cm | vinyl clad soffits. | | Not allowed: | vinyl |
| F | = 22.8 cm | clearance to outside corner. | N | = 15.2 cm | non-vinyl siding. |
| G* | = 15.2 cm | clearance to inside corner. | P | = 213.3 cm | |
| | 121.9 cm | vinyl windows or siding. | | | |
| H | = 91.5 cm | not to be installed above a gas meter/regulator assembly within 91.5 cm horizontally from the center line of the regulator. | | | |
| I | = 91.4 cm | clearance to service regulator vent outlet and electric service. | | | |

* 122 cm minimum for vinyl windows or vinyl siding.

** Not allowed for vinyl clad soffits.

*** a fireplace shall not open directly above a sidewalk or paved driveway which is located between two single family dwellings and services both dwellings.

**** only permitted if veranda, porch, deck or balcony is fully open on a minimum of 2 sides beneath the floor, or if the screened porch guidelines are followed.

Note 1: Local codes or regulations may require different clearances.

Note 2: Termination in an alcove space (spaces open only on one side and with an overhang) are permitted with the dimensions specified for vinyl or non-vinyl siding and soffits. 1) There must be a 0.91 M minimum between terminations or between the

fireplace and termination. 2) All mechanical air intakes within 3.0 M of a termination must be a minimum of 0.91 M below the fireplace hood. 3) All gravity air intakes within 0.91 M of the fireplace hood must be a minimum of 2.54 cm below the termination.

| | Q _{MIN} | R _{MAX} |
|---|------------------|---------------------------|
| Dakota | 3.0 M | 2 x Q _{ACTUAL} |
| 1 additional termination cap | Q + 0.91 M | 1 x Q _{ACTUAL} |
| 2 additional termination caps | Q + 1.83 M | 2/3 x Q _{ACTUAL} |
| 3 additional termination caps | Q + 2.74 M | 1/2 x Q _{ACTUAL} |
| R _{MAX} = (2 / # caps plus fireplace) x Q _{ACTUAL} | | |

Figure 4.1 Minimum Clearances

5 Fireplace Preparation

CAUTION



Sharp Edges

- Wear protective gloves and safety glasses during installation.



A. Remove Logs and Shipping Cover

Remove locking screw at the top of the doors (shown in Figure 5.1).

Open the doors by sliding the handles toward the outside edges of the doors. Remove the cartons of logs from their shipping location in the appliance.

Set the logs and door lock bracket screw aside for later re-installation.

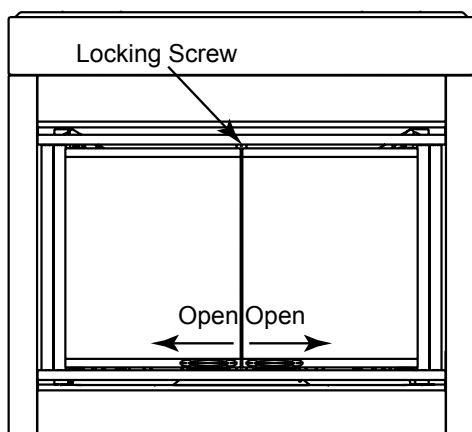


Figure 5.1 Door Operation

CAUTION

Do NOT notch into the framing around the fireplace spacers.

B. Securing and Leveling Fireplace



WARNING



Fire Risk

- Prevent contact with sagging, loose insulation.
- Do NOT install against vapor barriers or exposed insulation.

The diagram shows how to properly position, level, and secure the fireplace (see Figure 5.2). Nailing tabs are provided to secure the fireplace to the framing members.

- Place the fireplace into position on either a combustible or non-combustible continuous flat surface.

Note: Remove the top standoffs before sliding fireplace into position if using a non-combustible prefab enclosure.

- Level the fireplace from side to side and front to back.
- Shim the fireplace as necessary.
- Bend out nailing tabs on each side.
- Keep nailing tabs flush with the framing.
- Secure the fireplace to the framing by using nails or screws through the nailing tabs.

Upper front can be covered with non-combustible material or removed and replaced with non-combustible material.

NAILING TABS

Figure 5.2 Proper Positioning, Leveling and Securing of a Fireplace

6 Gas Information

A. Gas Pressure Requirements

Pressure requirements for Outdoor Lifestyles gas fireplaces are shown in Table 1 below.

Two taps are provided on the outlet side of the gas control for a test gauge connection to measure the inlet and outlet pressures. These inlet and outlet pressure taps can be accessed through the internal valve access panels as shown in **Section 11: Maintaining and Servicing the Fireplace**.

The fireplace and its individual shut-off valve must be disconnected from the gas supply piping system during any pressure testing of the system at test pressures in excess of 60 mbar.

If the fireplace must be isolated from the gas supply piping system by closing an individual shut-off valve, it must be of the handle-less type.

B. Gas Connection

Note: Have the gas supply line installed in accordance with local building codes by a qualified installer approved and/or licensed as required by the locality.

Note: Before the first firing of the fireplace, the gas supply line should be purged of any trapped air.

Note: Consult local building regulations to properly size the gas supply line leading to the (Rp 1/2 in.) hook-up at the unit.

Incoming gas line should be piped into the valve compartment and connected to the ISO 7-Rp 1/2 (BSP Rp 1/2) threaded gas inlet connection on the manual shutoff valve.

Note: Gas line **MUST** be run from right side of fireplace.

⚠ WARNING



Fire Risk

Explosion Risk

High pressure will damage valve.

- Disconnect gas supply piping **BEFORE** pressure testing gas line at test pressures above 60 mbar.
- Close the manual shutoff valve **BEFORE** pressure testing gas line at test pressures equal to or less than 60 mbar.



⚠ WARNING



CHECK FOR GAS LEAKS

Fire Risk

Explosion Risk

Asphyxiation Risk

- Check all fittings and connections.
- Do not use open flame.
- After the gas line installation is complete, all connections must be tightened and checked for leaks with a commercially available, non-corrosive leak check solution. Be sure to rinse off all leak check solution following testing.



Fittings and connections may have loosened during shipping and handling.

Table 1

| | Natural Gas (G20) | Propane (G31) | Butane (G30) | Natural Gas (G25) |
|-------------------|------------------------|-----------------------|-----------------------|------------------------|
| Inlet Pressure | 20mbar | 37 or 50mbar | 30 or 50mbar | 25mbar |
| Manifold Pressure | 4-8.7 mbar | 24mbar | 24mbar | 8.7mbar |
| Gas Rate | 1.68 m ³ /h | .62 m ³ /h | .42 m ³ /h | 1.68 m ³ /h |
| Max.Input (NETCV) | 16.5 kW | 15.0 kW | 13.7kW | 14.0 kW |
| Burner Injector | DMS 25 | DMS 44 | DMS 46 | DMS 25 |
| Pilot Injector | 51 | 30 | 30 | 51 |

7 Electrical Information

A. Ignition System Wiring

- This fireplace is equipped with an electronic ignition system which operates on a 6 volt system.
- The batteries are located within the ignition module which is located within the external control box. A wiring diagram is shown in Figure 7.1.
- The battery pack requires four AA batteries (not included). See **Section 11.B** for battery replacement.

CAUTION

Battery polarity must be correct or module damage will occur.

B. Remote Control

- This fireplace is equipped with a remote control to operate the ignition system.
- 9 volt battery required.
- Follow operating instructions included with remote control.

⚠ WARNING



Shock Risk

- Replace damaged wire with type 105° C rated wire.
- Wire must have high temperature insulation.

CAUTION

Label all wires prior to disconnection when servicing controls. Wiring errors can cause improper and dangerous operation. Verify proper operation after servicing.

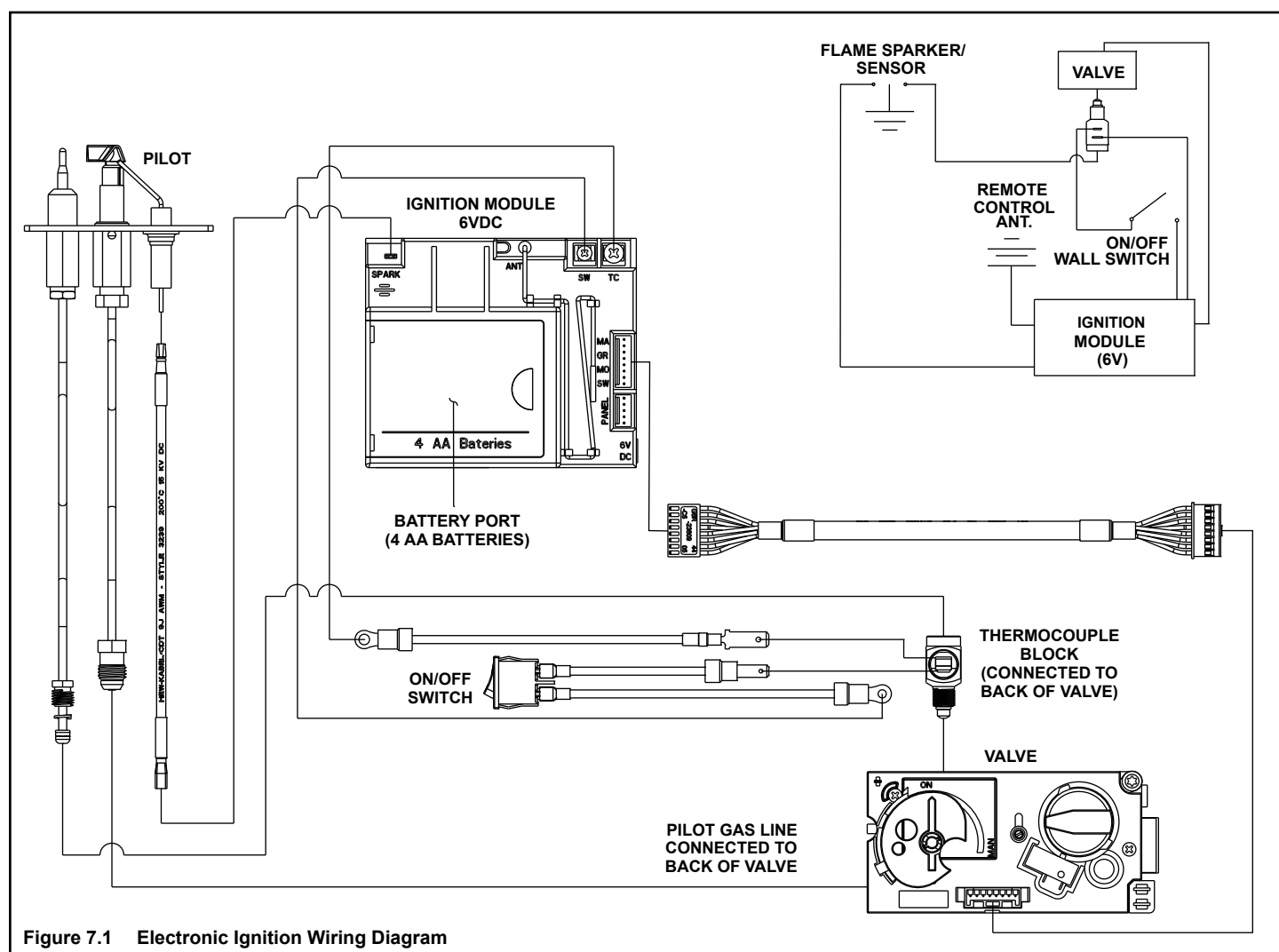


Figure 7.1 Electronic Ignition Wiring Diagram

8 Finishing

A. Mantel Projections

Figure 8.1 shows the minimum vertical dimension of fireplace mantels or other combustible projections above the top front edge of the fireplace.

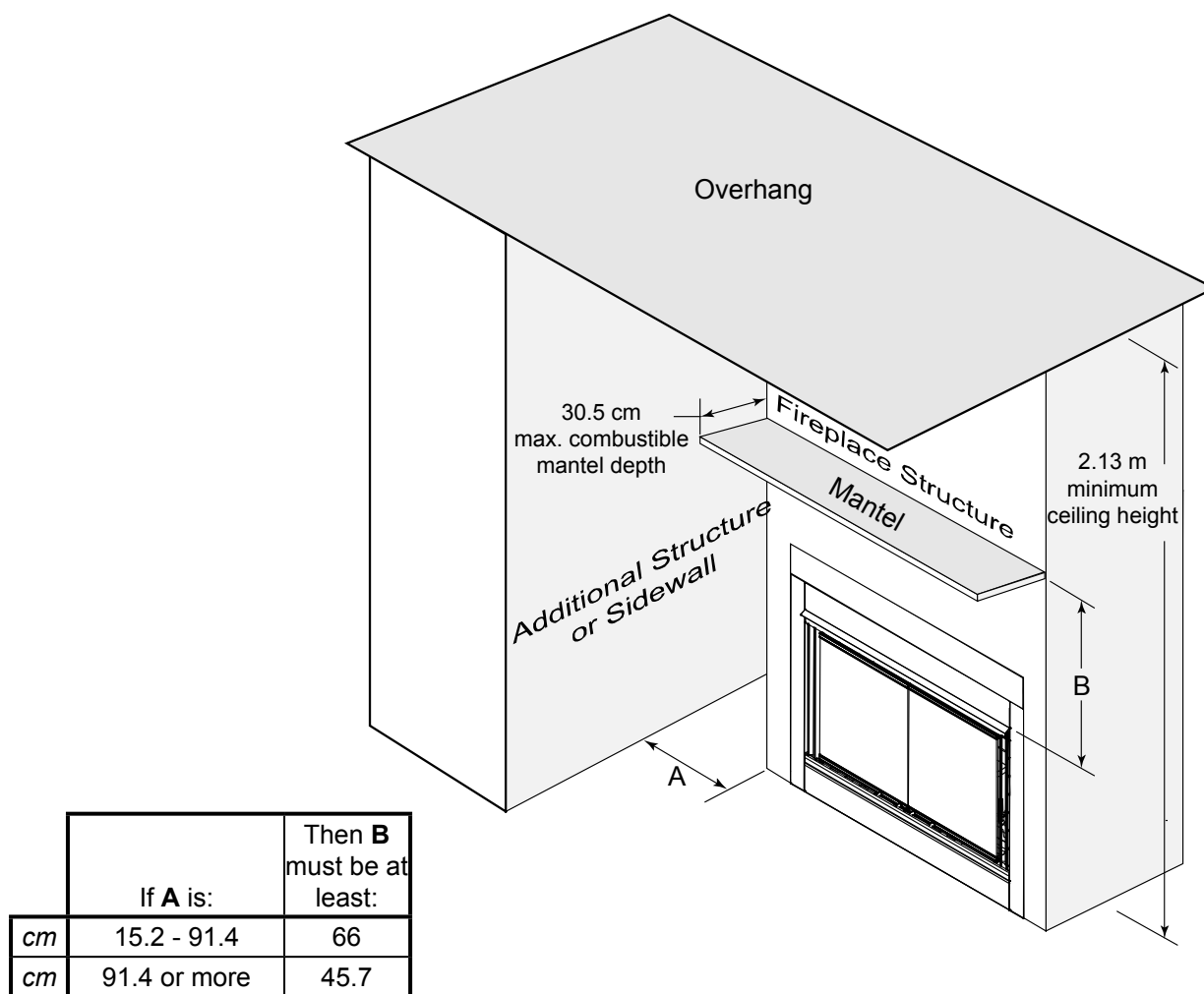


Figure 8.1 Clearances to Combustible Mantels or other Combustibles above Fireplace.

B. Facing Material



⚠ WARNING

Fire Risk

Do NOT obstruct air inlet or outlet grilles.
Do NOT modify grilles.

- Modifying or covering grilles could cause temperature rise and fire hazard.

Finishing materials must not interfere with:

- Air flow through grilles or louvers.
- Operation of louvers or doors.
- Access for service.

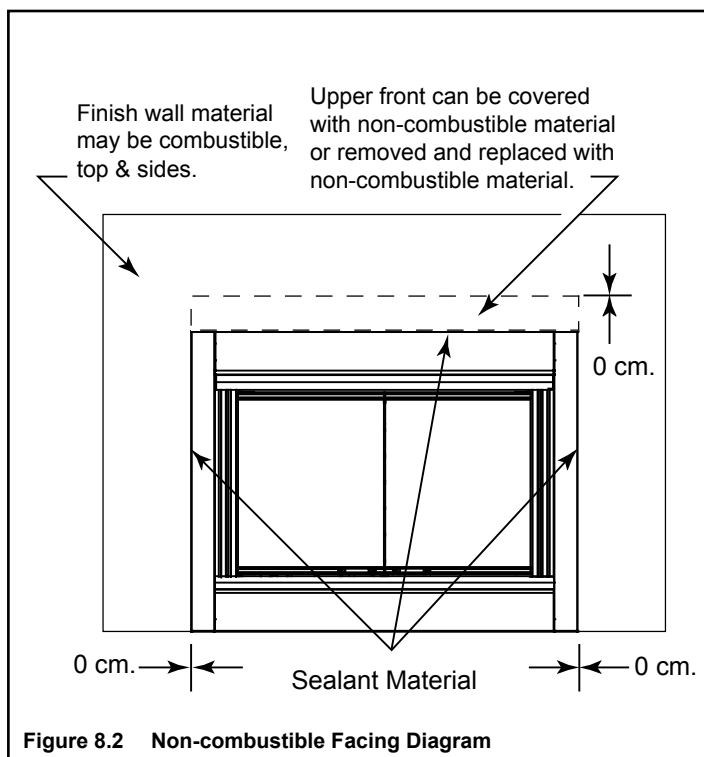


⚠ WARNING

Fire Risk

Finish all edges and fronts to clearances and specifications listed in manual.

- Metal fireplace front may be covered with non-combustible material only.
- Do NOT overlap combustible materials onto fireplace front.
- Install combustible materials up to specified clearances on top front and side edges.
- Seal joints between the finished wall and fireplace top and sides using only a 150° C minimum sealant.



9 Fireplace Setup

A. Clean the Fireplace

Clean/vacuum any sawdust that may have accumulated inside the firebox or underneath in the control cavity.

Note: Use only manufacturer's supplied media for fuel bed layout.

B. Grate Assembly Placement

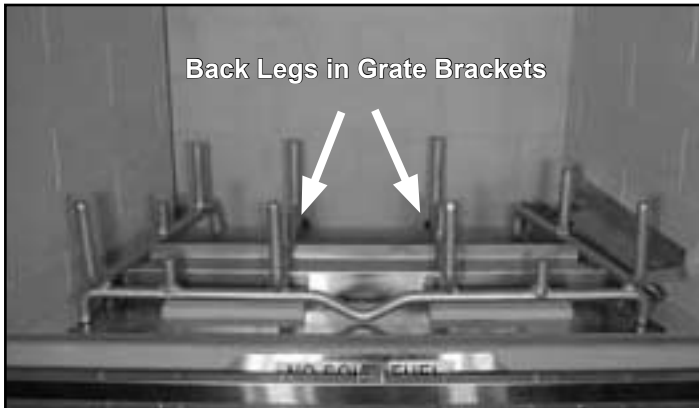


Figure 9.1 Back Legs in Grate Brackets (front view)



Figure 9.2 Top view

Ensure grate assembly is over burner assembly, centered from left to right, and back legs are in grate brackets.

C. Positioning the Logs

See Section 13.B. for log descriptions and illustrations.

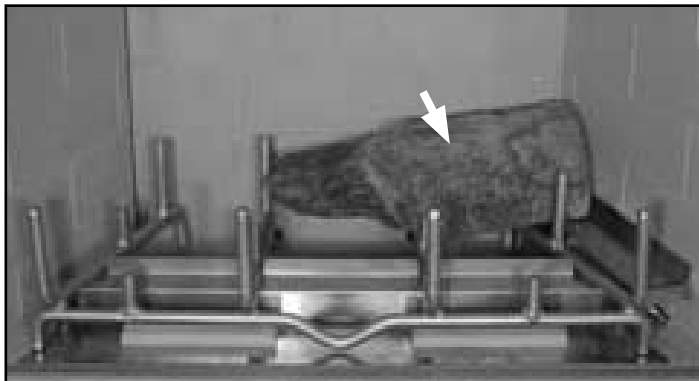


Figure 9.3 Right Rear Log (SRV720) (front view)



Figure 9.4 Top view

Place right rear log on the grate against the fireplace right side wall, so that its right end sits in the bracket opening.

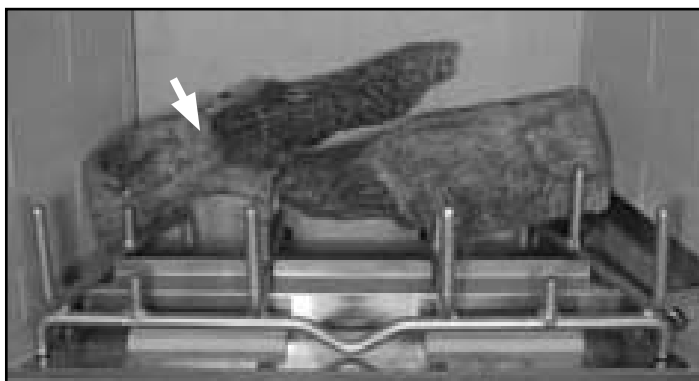


Figure 9.5 Left Rear Log (SRV728) (front view)

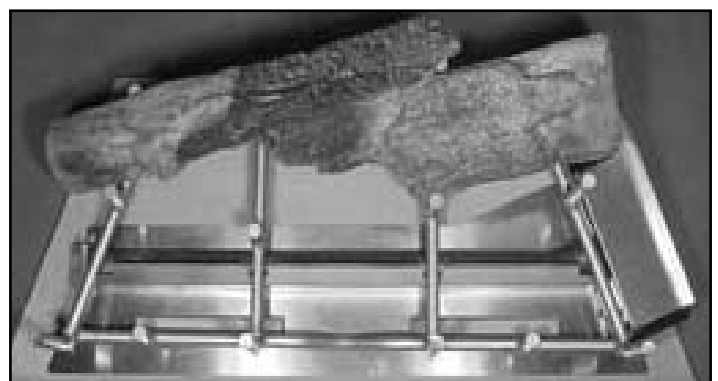


Figure 9.6 Top view

Place the left rear log on the grate against the left wall and rest it on log.

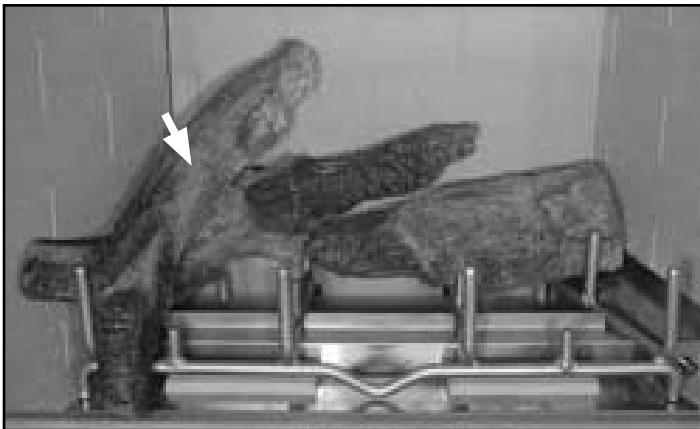


Figure 9.7 Left Side Log (SRV723) (front view)



Figure 9.8 Top view

Place the fork of log onto the left front bar and rest its back on right rear log.

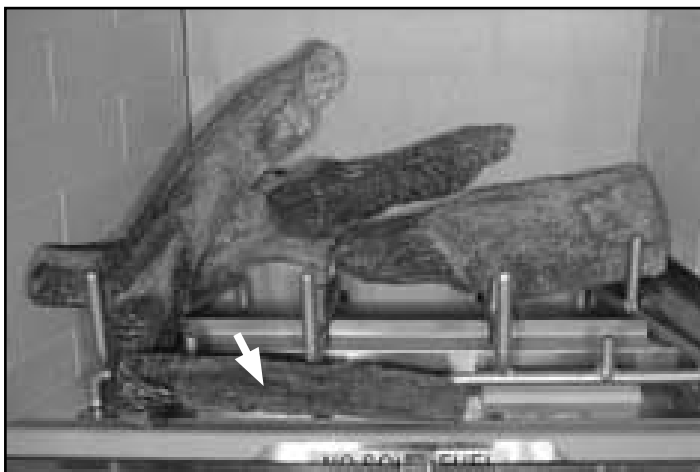


Figure 9.9 Front Log (SRV727) (front view)



Figure 9.10 Top view

Place front log in front of the main grate with its left end resting on left rear log as shown.



Figure 9.11 Front Left Log (SRV722) (front view)



Figure 9.12 Top view

Place front left log between locating bars so it rests against left side log and on top of front log.



Figure 9.13 Front Right Log (SRV724) (front view)



Figure 9.14 Top view

Place right center log between the 4th and 5th vertical bars on the log grate, resting the back on right rear log.



Figure 9.15 Right Side Log (SRV740) (front view)



Figure 9.16 Top view

Place right log against the rightmost front grate bar and rest its rear on right rear log, angled towards the corner as shown.



Figure 9.17 Right Front Corner Log (SRV742) (front view)

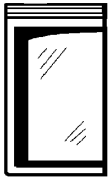


Figure 9.18 Top view

Place right front corner log between the right side wall and right side grate bar as shown.

D. Glass Assembly

WARNING



Handle glass with care.

- Inspect the glass for cracks, chips or scratches.
- Do NOT strike, slam or scratch glass.
- Do NOT operate fireplace with glass door removed, cracked, broken or scratched.
- Replace glass door assembly as a complete assembly.

- The glass doors are included with and pre-installed in the fireplace.
- To adjust doors, open them and loosen screws on top and bottom pivot pins. Slide each door as necessary and tighten screws.
- To adjust handle, loosen screws to move handles as necessary and tighten screws.

F. Reinstall Door Lock

When logs and lava rock have been installed, or if the glass assembly has been adjusted, reinstall the door lock by inserting the screw at the top of the door. Tighten screw. You may refer to Section 5.A. if needed.

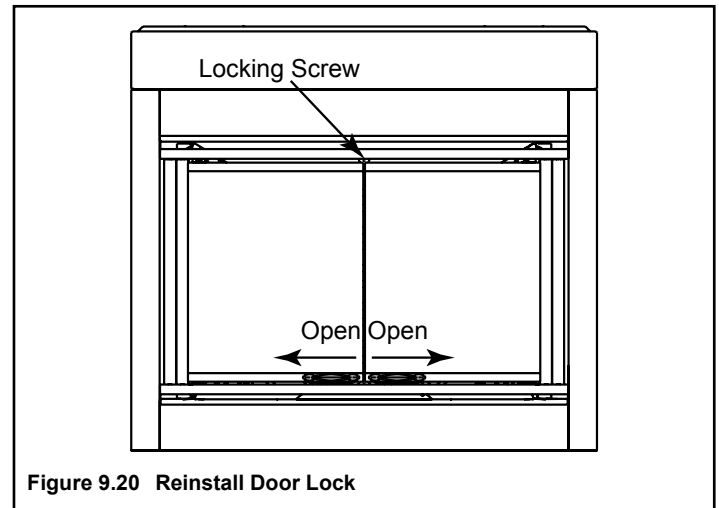


Figure 9.20 Reinstall Door Lock

E. Placing Lava Rock

- After logs have been placed spread part of the lava rock (included) between the rock pan and ashlip (see Figure 9.19).

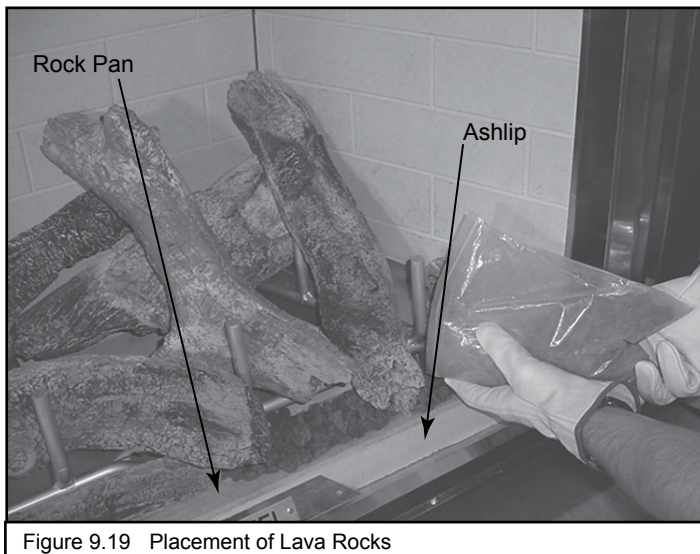


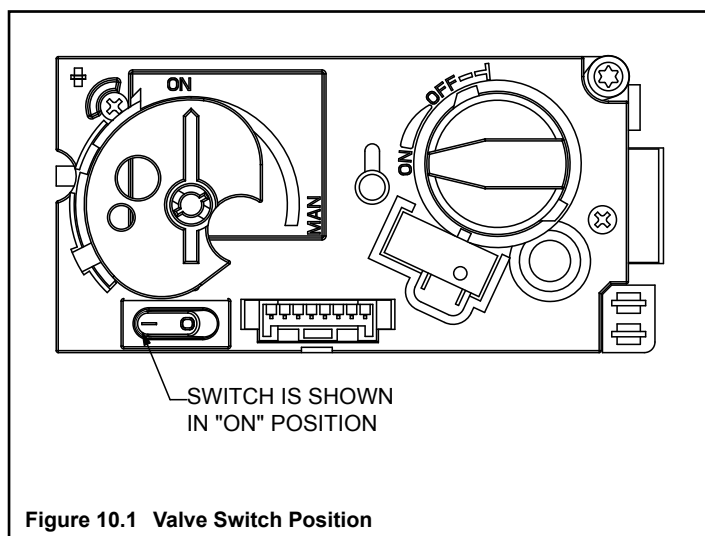
Figure 9.19 Placement of Lava Rocks

10 Operating Instructions

A. Before Lighting Fireplace

Before operating this fireplace, have a qualified technician:

- Remove all shipping materials from inside the firebox.
- Review proper placement of logs and lava rock.
- Check the wiring and batteries.
- Check the air shutter adjustment.
- Ensure that there are no gas leaks.
- Ensure that the flow of combustion and ventilation air is not obstructed (front grilles).
- A guard is recommended for the protection of young children, the elderly or infirm.
- Parts sealed by the manufacturer or agent must not be altered by the user.
- The fuel bed must not be disturbed, do not burn rubbish.



- Switch must be in position shown in Figure 10.1 in order for remote control to operate properly.

WARNING

Improper installation, adjustment, alteration, service or maintenance can cause injury or property damage. Refer to the owner's information manual provided with this fireplace. For assistance or additional information consult a qualified installer, service agency or the gas supplier.

WARNING

Do NOT use this fireplace if any part has been under water. Immediately call a qualified service technician to inspect the fireplace and to replace any part of the control system and any gas control which has been under water.

WARNING



HOT SURFACES!

Glass and other surfaces are hot during operation and cool down.

Hot glass will cause burns.

- Do not touch glass until it is cooled
 - NEVER allow children to touch glass
 - Keep children away
- CAREFULLY SUPERVISE children in same room as appliance.
 - Alert children and adults to hazards of high temperatures.
- High temperatures may ignite clothing or other flammable materials.**
- Keep clothing, furniture, draperies and other combustibles away.

B. Lighting the Fireplace

Electronic Ignition

FOR YOUR SAFETY READ BEFORE LIGHTING

WARNING: If you do not follow these instructions exactly, a fire or explosion may result causing property damage, personal injury or loss of life.

- A.** This fireplace is equipped with an electronic pilot ignition device which automatically lights the burner. Do not try to light the burner by hand.
- B. BEFORE LIGHTING**, smell all around the fireplace area for gas. Be sure to smell next to the floor because some gas is heavier than air and will settle on the floor.
- WHAT TO DO IF YOU SMELL GAS**
- Do not try to light any appliance.
 - Do not touch any electric switch; do not use any phone in your building.
 - Immediately call your gas supplier from a neighbor's phone. Follow the gas supplier's instructions.
 - If you cannot reach your gas supplier, call the fire department.
 - C.** Do not use this fireplace if any part has been under water. Immediately call a qualified service technician to inspect the fireplace and to replace any part of the control system and any gas control which has been under water.

WARNING:

DO NOT CONNECT 240 VAC TO THE CONTROL VALVE.

Improper installation, adjustment, alteration, service or maintenance can cause injury or property damage. Refer to the owner's information manual provided with this fireplace.

This fireplace needs fresh air for safe operation and must be installed so there are provisions for adequate combustion and ventilation air.

If not installed, operated, and maintained in accordance with the manufacturer's instructions, this product could expose you to substances in fuel or fuel combustion.

Keep burner and control compartment clean. See installation and operating instructions accompanying fireplace.

CAUTION:

Hot while in operation. Do not touch. Keep children, clothing, furniture, gasoline and other liquids having flammable vapors away.

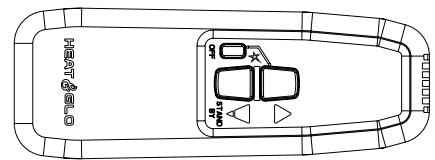
Do not operate the fireplace with panel(s) removed, cracked or broken. Replacement of the panel (s) should be done by a licensed or qualified service person.

NOT FOR USE WITH SOLID FUEL

For use with natural, propane and butane gases.

LIGHTING INSTRUCTIONS

1. This fireplace is equipped with an ignition device which automatically lights the burner. Do not try to light the burner by hand.
2. Wait five (5) minutes to clear out any gas. Then smell for gas, including near the floor. If you smell gas, STOP! Follow "B" in the Safety Information located on the left side of this label. If you don't smell gas, go to next step.



3. To light the burner, simultaneously press the star ★ and up ▲ arrow buttons on the remote control until a short acoustic signal confirms the start sequence has begun.
4. If the fireplace will not operate, check the batteries then follow the instructions "To Turn Off Gas to Fireplace" and call your service technician or gas supplier.

TO TURN OFF GAS TO FIREPLACE

1. Push the 'OFF' button on remote.
2. Remove batteries from receiver.

C. After the Fireplace is Lit

Initial Break-in Procedure

When you light the fireplace, you may notice that it produces heat which does have an associated odor or smell. If you feel this odor is excessive it may require the initial three to four hour continuous burn on high followed by a second burn up to 12 hours to fully drive off any odor from paint and lubricants used in the manufacturing process. Condensation of the glass is normal

Note: This fireplace should be run three to four hours on the initial start-up. Turn it off and let it cool completely. Clean the glass. Replace the glass and run the fireplace for an additional 12 hours. This will help cure the products used in the paint and logs.

CAUTION

- Prevent accidental fireplace operation when not attended.
- Unplug or remove batteries from remote switch if absent or if fireplace will not be used for an extended period of time.
- Property damage possible from elevated temperatures.

CAUTION

Smoke and odors are released during initial operation.
Smoke and odors may be irritating to sensitive individuals.



⚠ WARNING

Fire Risk High Temperatures

Keep combustible household items away from fireplace.

Do NOT obstruct combustion and ventilation air.

- Do NOT place combustible items on top of or in front of fireplace.
- Keep furniture, draperies away from fireplace.



⚠ WARNING

Fire Risk

Keep combustible materials, gasoline and other flammable vapors and liquids clear of fireplace.

- Do NOT store flammable materials in the vicinity of the fireplace.
- Do NOT use gasoline, lantern fuel, kerosene, charcoal lighter fluid or similar liquids in this fireplace.

Combustible materials may ignite.

D. Frequently Asked Questions

| Issue | Solutions |
|---------------------------|---|
| Condensation on the glass | This is a result of gas combustion and temperature variations. As the fireplace warms, this condensation will disappear. |
| Blue flames | This is a result of normal operation and the flames will begin to yellow as the fireplace is allowed to burn for 20 to 40 minutes. |
| Odor from fireplace | When first operated, this fireplace may release an odor for the first several hours. This is caused by the curing of the paint and the burning off of any oils remaining from manufacturing. |
| Film on the glass | This is a normal result of the curing process of the paint and logs. Glass should be cleaned within 3 to 4 hours of initial burning to remove deposits left by oils from the manufacturing process. A non-abrasive cleaner such as gas fireplace glass cleaner may be necessary. See your dealer. |
| Metallic noise | Noise is caused by metal expanding and contracting as it heats up and cools down, similar to the sound produced by a furnace or heating duct. This noise does not affect the operation or longevity of the fireplace. |

11 Maintaining and Servicing the Fireplace

Although the frequency of fireplace servicing and maintenance will depend on use and the type of installation, a qualified service technician should perform an fireplace check-up at the beginning of each heating season.

Debris from any outside source and/or soot must be removed from the fireplace. Allow logs to cool, remove if necessary, vacuum and replace in accordance with instructions on pages 13-15.

WARNING

Risk of injury or property damage

Before servicing:

- Turn off gas.
- Disable remote control, if one is present.
- Ensure fireplace is completely cooled.

After Servicing:

- Replace any screen or barrier that was removed.
- Reseal and reinstall any venting removed for servicing.

WARNING



Annual inspection by qualified technician recommended.

Check:

- Condition of doors, surrounds and fronts.
- Condition of glass, glass assembly.
- Obstructions of combustion and ventilation air.
- Condition of logs.
- Condition of firebox.
- Burner ignition and operation.
- Burner air shutter adjustment.
- Gas connections and fittings.

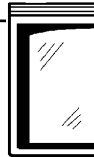
Clean:

- Glass.
- Air passageways, grilles, control compartment.
- Burner, burner ports.

Risk of:

- Fire
- Delayed ignition or explosion
- Exposure to combustion fumes
- Odors

CAUTION



Handle glass assembly with care.

Note: Clean glass after initial 3-4 hours operation. **Longer operation without cleaning glass may cause a permanent white film on glass.**

When cleaning glass door:

- Avoid striking, scratching or slamming doors.
 - Do NOT use abrasive cleaners.
 - Use a hard water deposit glass cleaner on white film.
 - Do NOT clean glass when it is hot.
 - Turn off fireplace after 3-4 hours of operation and ALLOW TO COOL.
 - Remove and clean glass assembly.
 - Replace glass assembly and operate fireplace for an additional 12 hours.
- Refer to maintenance instructions.

A. Valve Access and Service

- The gas valve can be accessed behind the cement refractory panel on the right side of the fireplace.
- Lift doors out and set aside. There is a washer under each door. Be careful not to lose the washers.

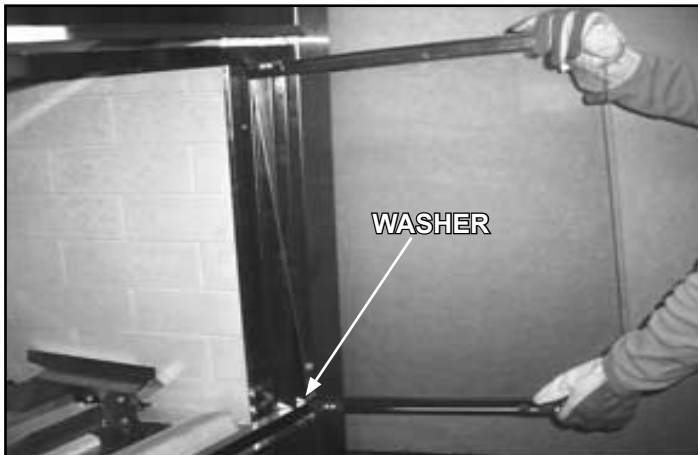


Figure 11.1 Lift Out Doors

- Remove logs if access is necessary after installation is complete. See Section 9.C. Remove logs in reverse order of set up.
- Remove grate if access is necessary after installation is complete. (Refer to Section 9.B.)
- Remove two screws on side of pilot shield and remove shield.



Figure 11.2 Remove Pilot Shield

- Use a phillips screwdriver to remove the two screws securing the refractory retaining strip. Remove the refractory side panel and set aside.



Figure 11.3 Loosen Refractory Retaining Strip

- Remove the inside valve access panel by lifting it up and out.



Figure 11.4 Remove Valve Access Panel

- Use a phillips screwdriver to remove the exterior valve access panel (remove four screws).

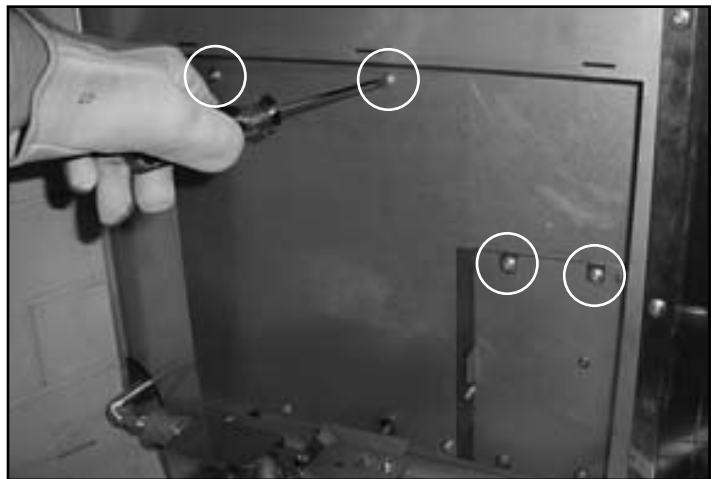


Figure 11.5 Remove Exterior Valve Access Panel

- Loosen lower pressure tap screw before attaching manometer. Start up the fireplace to verify the pressure and adjust as necessary. Reverse these steps to reassemble before log positioning.

Note: Pressure tap screws must be re-tightened.

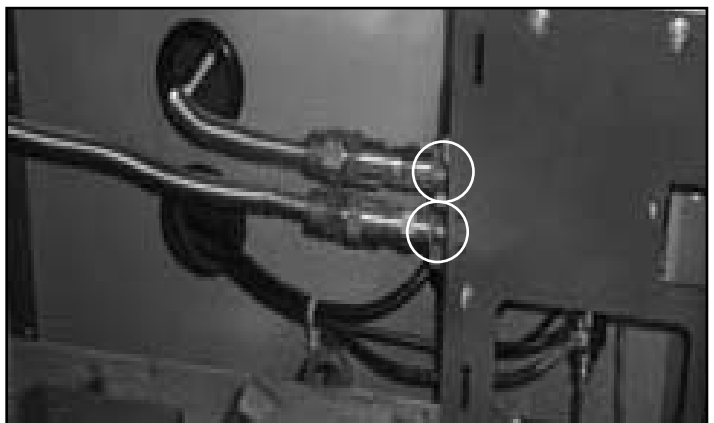
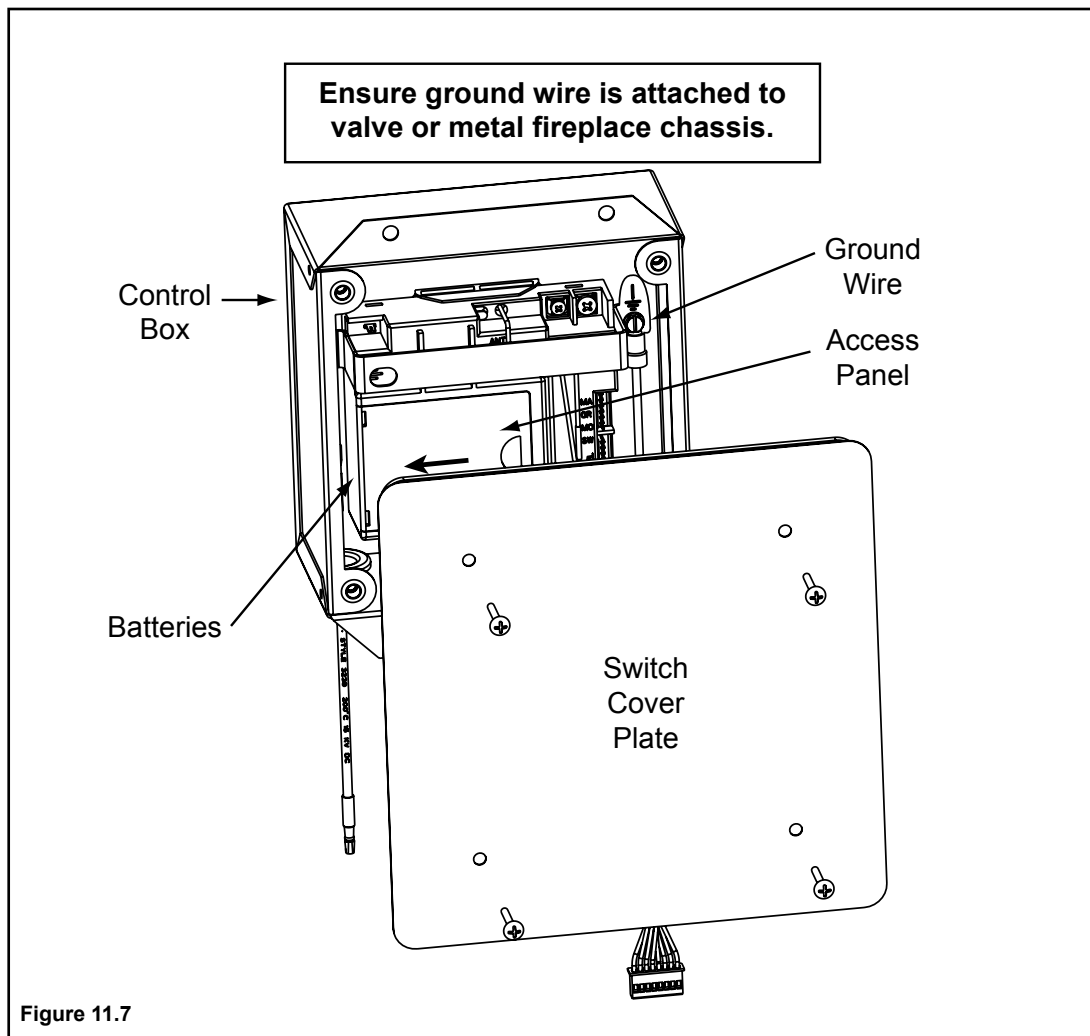


Figure 11.6 Connect Manometer

B. Battery Replacement

- Remove switch cover plate from the control box.
- Slide access panel.



- Replace four AA batteries.
- Replace access panel and switch cover plate.

C. Maintenance and Service Tasks:

| Inspect | Maintenance Tasks |
|-----------------------------------|--|
| Doors, surrounds and fronts | 1 Inspect for scratches and nicks that can lead to breakage when exposed to heat. |
| | 2 Verify no obstructions to airflow through the louvers. |
| | 3 Verify proper clearance to combustible household objects is maintained. |
| Glass assembly and glass | 1 Inspect glass panels for scratches and nicks that can lead to breakage when exposed to heat. |
| | 2 Confirm there is no damage to glass or glass frame. Replace as necessary. |
| | 3 Verify that latches engage properly, clip studs are not stripped, and glass attachment components are intact and operating properly. Replace as necessary. |
| | 4 Clean glass using a nonabrasive cleaner such as Brasso®. Replace glass assembly if severely coated with silicate deposits that cannot be removed. |
| Valve compartment and firebox top | 1 Vacuum and wipe out dust, cobwebs, debris or pet hair. Use caution when cleaning these areas. Screw tips that have penetrated the sheet metal are sharp and should be avoided. |
| | 2 Remove any foreign objects. |
| | 3 Verify unobstructed air circulation. |
| Logs | 1 Inspect for broken, damaged or missing logs. Replace as necessary. |
| | 2 Verify correct log placement and no flame impingement causing sooting. Correct as necessary. |
| Firebox | 1 Inspect for paint condition, warpage, corrosion or perforation. Sand and repaint as necessary. |
| | 2 Replace fireplace if firebox has been perforated. |
| Burner ignition and operation | 1 Verify burner is properly secured and aligned with pilot or igniter. |
| | 2 Clean off burner top, inspect for plugged ports, corrosion or deterioration. Replace burner if necessary. |
| | 3 Replace rockwool with new dime-sized and shaped pieces. Do not block ports or obstruct lighting paths. |
| | 4 Check for smooth lighting and ignition carryover to all ports. Verify there is no ignition delay. |
| | 5 Inspect for lifting or other flame problems. |
| | 6 Verify air shutter is clear of dust and debris. |
| | 7 Inspect orifice for soot, dirt or corrosion. |
| | 8 Verify manifold and inlet pressures. Adjust regulator as required. |
| | 9 Inspect pilot flame strength. Clean or replace orifice as necessary. |
| | 10 Verify millivolt output. Replace as necessary. |
| Remote controls | 1 Verify operation of remote. |
| | 2 Replace battery in remote transmitters and batteries powering receivers. |
| | 3 If fireplace will not be used for a long period of time, verify batteries have been removed. |

12 Troubleshooting

With proper installation, operation and maintenance your gas fireplace will provide years of trouble-free service. If you do experience a problem, this troubleshooting guide will assist a qualified service person in the diagnosis of a problem and the corrective action to be taken. This troubleshooting guide can only be used by a qualified service technician.

A. Electronic Ignition System

| Symptom | | Possible Causes | Corrective Actions |
|---------|--|---|--|
| 1. | No transmission, motor does not turn. | A. Receiver must learn new code. | Press and hold the receiver's reset button until you hear 2 acoustic signals. After the second longer acoustic signal, release the reset button and within the subsequent 20 seconds, press the down arrow on the remote handset until you hear an additional long acoustic signal confirming the new code is set. |
| 2. | No ignition. No tone. | A. Receiver | Replace receiver and reprogram code. |
| 3. | No ignition; one 5 seconds continuous tone (7 shorts beeps might be heard prior to the 5 seconds tone). | A. ON/OFF switch is in OFF position. | Push switch to ON position. |
| | | B. Loose wire. | Secure wire. |
| | | C. Receiver. | Replace receiver and reprogram. |
| | | D. Bent pins on 8 wire connector. | Straighten pins on 8 wire connector. |
| | | E. Valve. | Replace valve. |
| 4. | No pilot flame and control continues to spark. | A. Air in the pilot supply line. | Purge the line or start ignition several times. |
| | | B. Thermocouple circuit wired incorrectly. | Check polarity of the thermocouple wires. |
| | | C. No spark at pilot burner. | Check spark gap, check wiring connection. Check for spark in location along cable. |
| | | D. Valve. | Replace valve. Do not over tighten. |
| | | E. Over tightened thermocouple interrupter. | Replace valve and thermocouple interrupter. |
| | | F. Receiver. | Replace receiver and reprogram code. |
| 5. | Pilot is lit and control continues to spark. Valve shuts off after 10...30 seconds. Valve operates manually. | A. Receiver. | Replace receiver and reprogram code. |
| 6. | Pilot is lit, sparking stops if a flame is present. Valve shuts off after 10...60 seconds. Valve does not work manually. | A. Thermocouple. | Replace thermocouple. |
| | | B. Low inlet pressure to valve. | Confirm sufficient inlet pressure to the valve. Adjust or replace inlet regulator if necessary. |
| | | C. Valve. | Replace valve. Do not overtighten the thermocouple interrupter. |
| 7. | 3 short beeps while the motor turns. | A. Batteries are low. | Replace batteries - quality alkaline recommended. WARNING: Creating an electrical short between the batteries/battery box and metal parts of the appliance may render the receiver inoperable. |
| 8. | Pilot flame lights but there is no main gas flow. | A. Manual override knob (if equipped) is in MAN position. | Turn Manual override knob to ON position. |
| | | B. Valve turned down to pilot flow. | Turn flame to high fire by pressing up button on remote handset. |
| | | C. Low inlet pressure to valve. | Confirm sufficient inlet pressure to the valve. Adjust or replace inlet regulator if necessary. |
| | | D. Valve. | Replace valve. |
| 9. | Pilot sparks, but pilot will not light. | A. Correct gas supply. | Verify that incoming gas line ball valve is "open". Verify that inlet pressure reading is within acceptable limits, inlet pressure must not exceed 50 mbar. |
| | | B. Ignitor gap is too large. | Verify that spark gap from ignitor to pilot hood is .43 cm. |
| | | C. Module is not grounded. | Verify control box is securely grounded to metal chassis of fireplace. |

13 Reference Materials

A. Fireplace Dimension Diagram

Dimensions are actual fireplace dimensions. Use for reference only. For framing dimensions and clearances refer to Section 3.

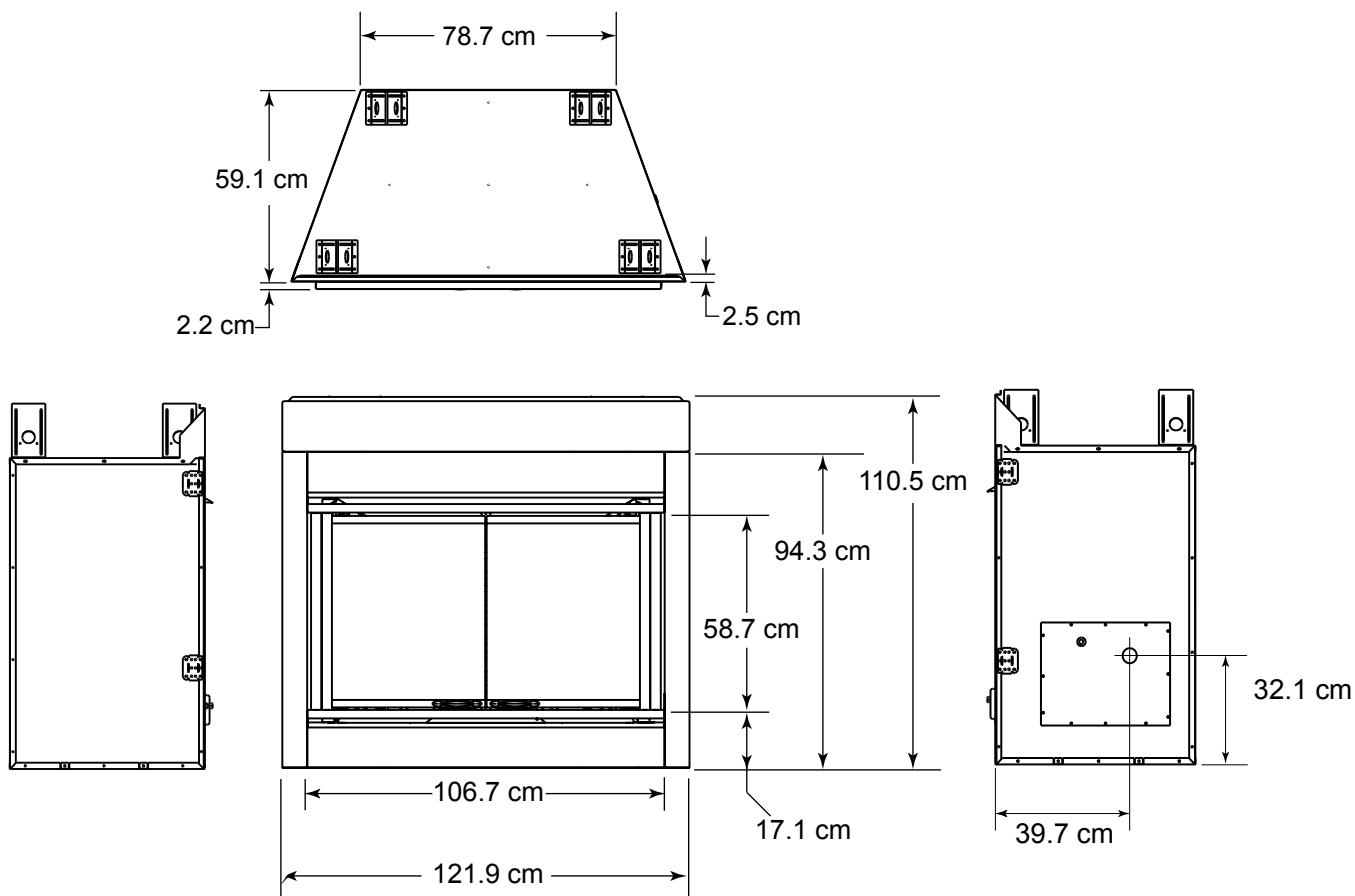


Figure 13.1 Fireplace Dimensions

DAKOTA42-CE SERIES

Service Parts

**outdoor
lifestyles**
by hearth & home technologies®

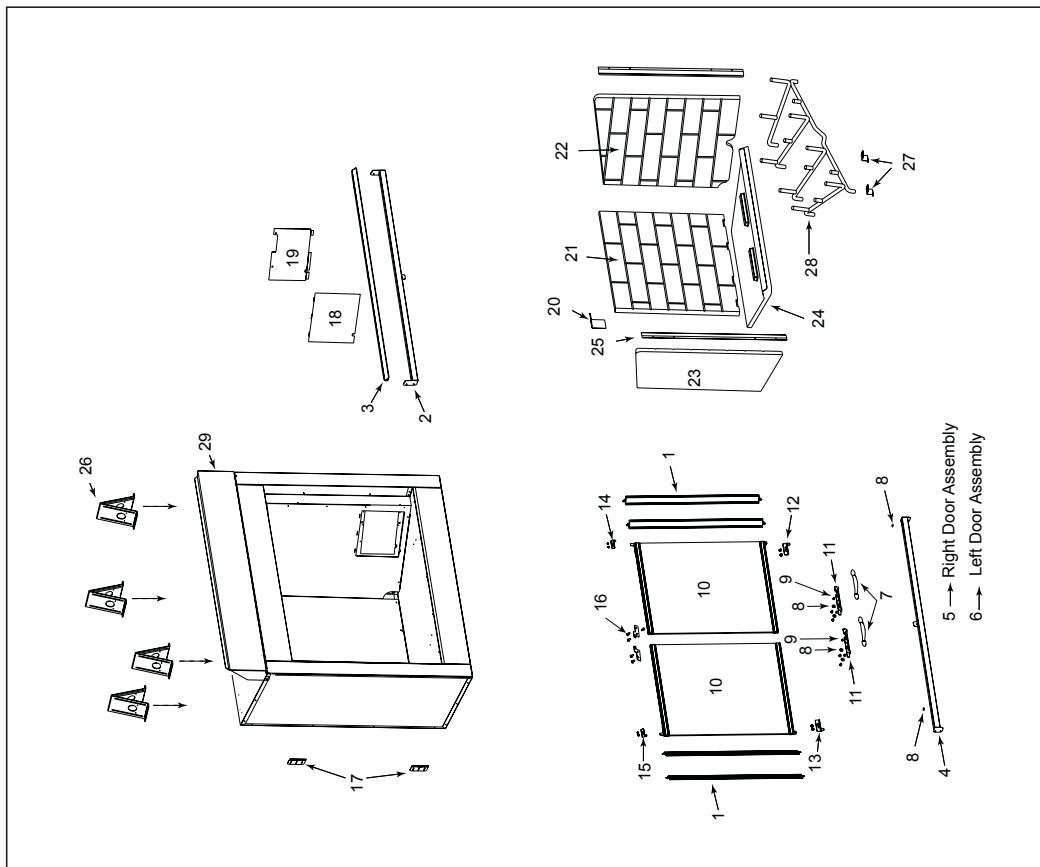
DAKOTA42-CE SERIES

Service Parts

Beginning Manufacturing Date: Feb 2006
Ending Manufacturing Date: Active

Service Parts List

Beginning Manufacturing Date: Feb 2006
Ending Manufacturing Date: Active

[illegible]

DAKOTA42-CE SERIES

Beginning Manufacturing Date: Feb 2006
Ending Manufacturing Date: Active

Service Parts List

lifestyles
For Health & Home Technologies®

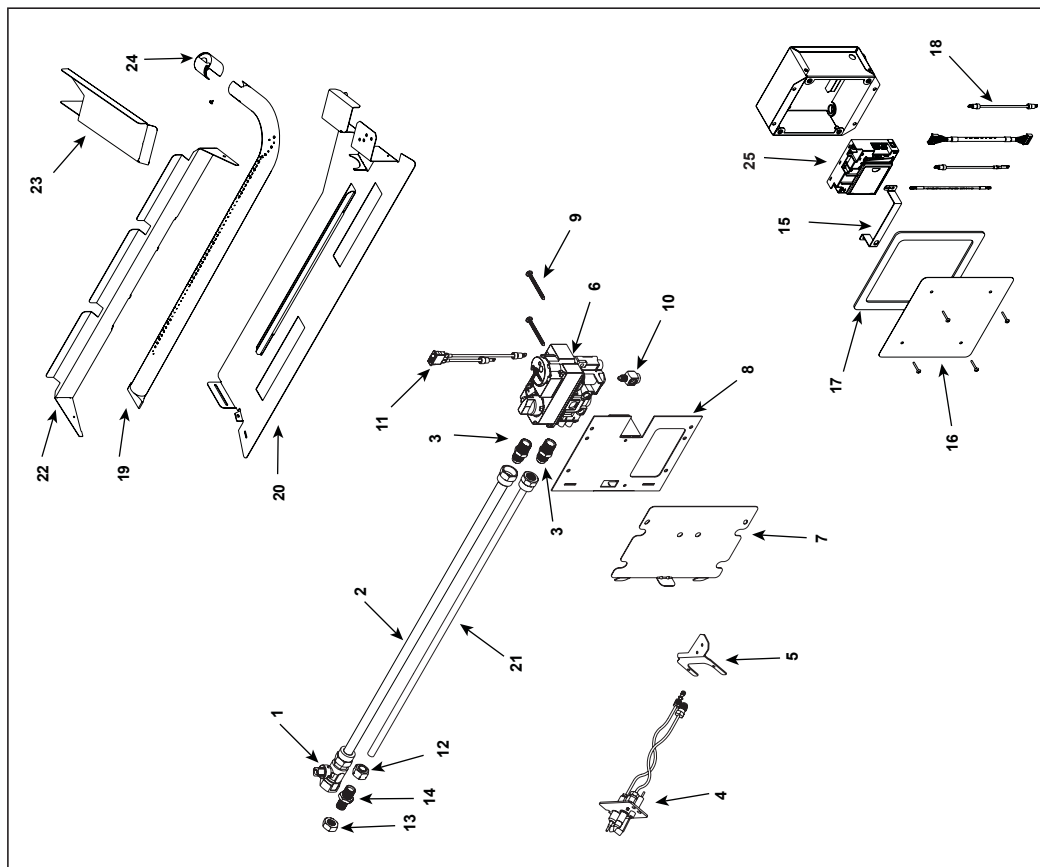
Beginning Manufacturing Date: Feb 2006
Ending Manufacturing Date: Active

Service Parts Diagram

lifestyles

[illegible]

06/4097



60/09

B. Service Parts List (continued)



Service Parts

Service Parts List
42 In. Outdoor Gas Fireplace

DAKOTA42-CE SERIES

Beginning Manufacturing Date: Feb 2006
Ending Manufacturing Date: Active

| # | Description of Part | DAK-B-CE | DAK-N-CE | DAK-P-CE | Qty. req. |
|---|----------------------|----------|----------|----------|--------------|
| | Log Set - Box 1 of 3 | 4036-711 | 4036-711 | 4036-711 | 1 |
| | Log | SRV720 | SRV720 | SRV720 | 1 |
| | Log Set - Box 2 of 3 | 4036-712 | 4036-712 | 4036-712 | 1 |
| | Log | SRV727 | SRV727 | SRV727 | 1 |
| | Log | SRV722 | SRV722 | SRV722 | 1 |
| | Log | SRV740 | SRV740 | SRV740 | 1 |
| | Log | SRV742 | SRV742 | SRV742 | 1 |
| | Log Set - Box 3 of 3 | 4036-713 | 4036-713 | 4036-713 | 1 |
| | Log | SRV723 | SRV723 | SRV723 | 1 |
| | Log | SRV724 | SRV724 | SRV724 | 1 |
| | Log | SRV728 | SRV728 | SRV728 | 1 |

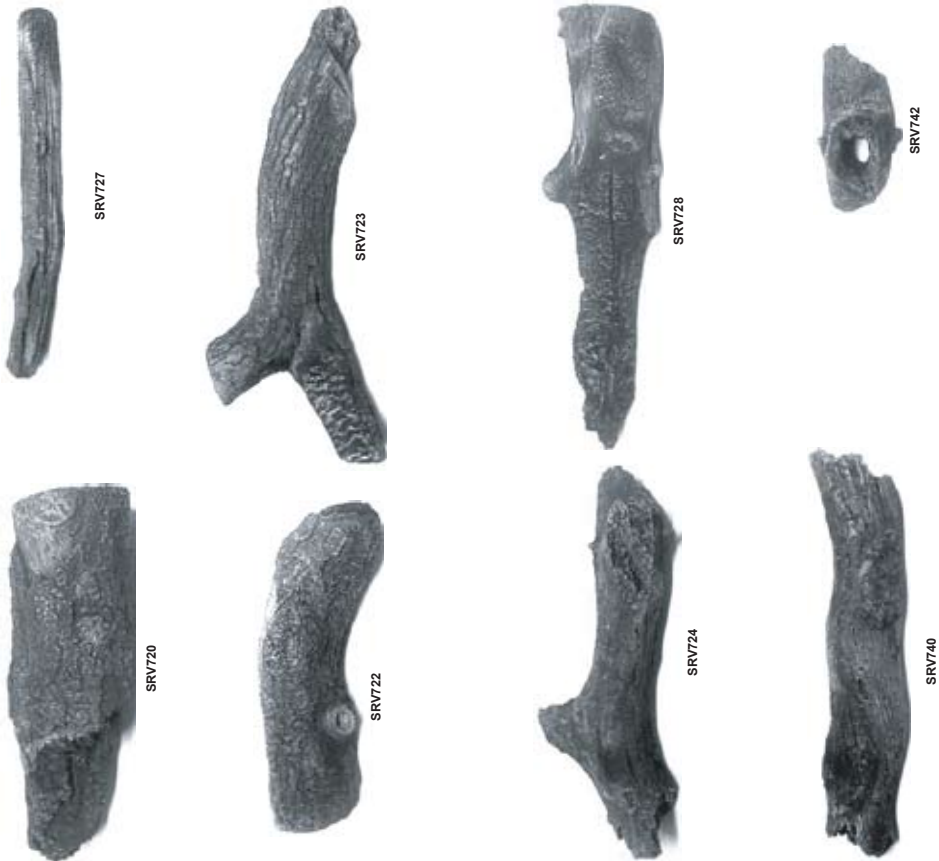


Service Parts

Service Parts List
42 In. Outdoor Gas Fireplace

DAKOTA42-CE SERIES

Beginning Manufacturing Date: Feb 2006
Ending Manufacturing Date: Active



This page intentionally left blank.

➔ C. Warranty

Outdoor Lifestyles by Hearth & Home Technologies, Inc.™ Limited Warranty

Hearth & Home Technologies, Inc. ("HHT") extends the following warranty for all Outdoor Lifestyles by HHT™ brand products ("Products") that are purchased from an HHT authorized dealer.

WARRANTY COVERAGE:

HHT warrants to the original owner of the Product at the site of installation, and to any transferee taking ownership of the Product at the site of installation within one year following the date of original purchase, that the Product will be free from defects in materials and workmanship at the time of manufacture. After installation, if covered components manufactured by HHT are found to be defective in materials or workmanship during the applicable warranty period, HHT will, at its option, repair or replace the covered components. This warranty is subject to conditions, exclusions and limitations as described below.

WARRANTY PERIOD:

The warranty period runs for one year, beginning on the earlier of: (i) the date of invoice for the Product; (ii) in the case of new home construction, the date of first occupancy of the residence or six months after the date of sale of the Product by an HHT authorized dealer, whichever occurs first; or (iii) the date 24 months following the date of Product shipment from HHT, regardless of the invoice or occupancy date.

WARRANTY CONDITIONS:

- This warranty only covers Products that are purchased through an HHT authorized dealer or distributor. A list of HHT authorized dealers is available on the HHT branded websites.
- This warranty is only valid while the Product remains at the site of original installation.
- Contact your installing dealer for warranty service. If the installing dealer is unable to provide necessary parts, contact the nearest HHT authorized dealer or supplier. Additional service fees may apply if you are seeking warranty service from a dealer other than the dealer from whom you originally purchased the Product.
- Check with your dealer in advance for any costs to you when arranging a warranty call. Travel and shipping charges for parts are not covered by this warranty.

WARRANTY EXCLUSIONS:

This warranty does not cover the following:

- Changes in surface finishes as a result of normal use. As a heating appliance, some changes in color of interior and exterior surface finishes may occur; this is not a flaw and not covered under warranty.
- Damage to printed, plated, or enameled surfaces caused by fingerprints, accidents, misuse, scratches, melted items, or other external sources and residues left on surfaces from the use of abrasive cleaners or polishes.
- Repair or replacement of parts that are subject to normal wear and tear during the warranty period. These parts include: paint, firebricks, grates, flame guides and the discoloration of glass.
- Minor expansion, contraction, or movement of certain parts causing noise. These conditions are normal and complaints related to this noise are not covered by this warranty.

C. Warranty (*continued*)

- Damages resulting from: (1) failure to install, operate, or maintain the Product in accordance with the installation instructions, operating instructions, and listing agent identification label furnished with the Product; (2) failure to install the Product in accordance with local building codes; (3) shipping or improper handling; (4) improper operation, abuse, misuse, continued operation with damaged, corroded or failed components, accident, or incorrectly performed repairs; (5) inadequate ventilation, negative pressure or environmental conditions, including, without limitation: hail, snow, ice, fallen branches, flooding, water damage and fading of color; (6) use of fuels other than those specified in the operating instructions; (7) installation or use of components not supplied with the Product or any other components not expressly authorized and approved by HHT; (8) modification of the Product not expressly authorized and approved by HHT in writing; and/or (9) interruptions or fluctuations of electrical power supply to the Product.
- Non-HHT venting components, hearth components or other accessories used in conjunction with the Product.
- Any part of a pre-existing fireplace system in which an insert or a decorative gas appliance is installed.
- The Product's capability to heat the desired space. Information is provided to assist the consumer and the dealer in selecting the proper appliance for the application. Consideration must be given to the Product's location and configuration and environmental conditions.

This warranty is void if:

- The Product has been over-fired or operated in atmospheres contaminated by chlorine, fluorine, or other damaging chemicals. Over-firing can be identified by, but not limited to, warped plates or tubes, rust colored cast iron, bubbling, cracking and discoloration of steel or enamel finishes and cracking or spalling of refractory or cementitious materials.
- The Product is subjected to prolonged periods of dampness, condensation, ice or snow.
- There is any damage to the Product or other components due to water or weather damage which is the result of, but not limited to, improper chimney or venting installation.

LIMITATIONS OF LIABILITY:

Repair or replacement in accordance with the provisions of this warranty will be the owner's exclusive remedy for and will constitute HHT's sole obligation under this warranty, under any other warranty (express or implied), or in contract, tort or otherwise; provided, however, that if HHT is unable to provide repair or replacement in an expedient and cost effective manner, HHT may discharge all such obligations by refunding the purchase price of the Product. No employee, agent, dealer, or other person is authorized to give any warranty on behalf of HHT. TO THE EXTENT ALLOWED BY LAW, HHT MAKES NO OTHER WARRANTY, EXPRESS OR IMPLIED, INCLUDING ANY WARRANTY OF MERCHANTABILITY OR FITNESS FOR A PARTICULAR PURPOSE. HHT WILL NOT BE LIABLE FOR ANY CONSEQUENTIAL OR INCIDENTAL DAMAGES ARISING OUT OF DEFECTS IN OR USE OF THE PRODUCTS. Some states do not allow exclusions or limitation of incidental or consequential damages, so these limitations may not apply to you. This warranty gives you specific rights; you also may have other rights, which vary from state to state. The duration of any implied warranty is limited to the duration of the warranty period specified herein.

D. Contact Information



Please contact your Outdoor Lifestyles dealer with any questions or concerns.

For the number of your nearest Outdoor Lifestyles dealer,
please visit www.hearthnhome.com

- NOTES -

CAUTION



DO NOT DISCARD THIS MANUAL

- Important operating and maintenance instructions included.
- Read, understand and follow these instructions for safe installation and operation.
- Leave this manual with party responsible for use and operation.



This product may be covered by one or more of the following patents: (United States) 4593510, 4686807, 4766876, 4793322, 4811534, 5000162, 5016609, 5076254, 5113843, 5191877, 5218953, 5263471, 5328356, 5341794, 5347983, 5429495, 5452708, 5542407, 5601073, 5613487, 5647340, 5688568, 5762062, 5775408, 5890485, 5931661, 5941237, 5947112, 5996575, 6006743, 6019099, 6048195, 6053165, 6145502, 6170481, 6237588, 6296474, 6374822, 6413079, 6439226, 6484712, 6543698, 6550687, 6601579, 6672860, 6688302B2, 6715724B2, 6729551, 6736133, 6748940, 6748942, 6769426, 6774802, 6796302, 6840261, 6848441, 6863064, 6866205, 6869278, 6875012, 6880275, 6908039, 6919884, D320652, D445174, D462436; (Canada) 1297749, 2195264, 2225408, 2313972; (Australia) 780250, 780403, 1418504 or other U.S. and foreign patents pending.