



# HEAT-N-GLO®

## *LifeStyle Products*

Hearth & Home Technologies - Lakeville  
20802 Kensington Blvd.  
Lakeville, MN 55044  
[www.fireplaces.com](http://www.fireplaces.com)



# INSTALLATION & OPERATING INSTRUCTIONS

## DAKOTA

### OUTDOOR GAS APPLIANCE



This appliance  
must be installed  
outside.

#### WARNING!

This appliance is tested and listed for use only with the optional accessories listed in these instructions. Use of optional accessories not specifically tested for this appliance could void the warranty and/or result in a safety hazard.

#### WARNING!

Improper installation, adjustment, alteration, service or maintenance can cause injury or property damage. Refer to this manual. For assistance or additional information, consult a qualified installer, service agency or the gas supplier.

## Table of Contents

A. Listings and Code Approvals .....	2
B. Description of the Appliance .....	3
C. Replacement Parts/Exploded View .....	4
D. Locations and Clearances .....	8
E. Installation of Appliance .....	10
F. Lighting Instructions for the "S" Series .....	15
G. Maintenance Instructions .....	16
H. Troubleshooting - "S" Series .....	17
Index .....	19
Warranty .....	20

## SAFETY PRECAUTIONS

1. Please read these installation instructions completely before beginning installation procedures. Failure to follow them could cause an appliance malfunction resulting in serious injury and/or property damage.
2. Always check your local building codes prior to installation. The appliance installation must comply with all local, regional, state and national codes and regulations.
3. **NEVER** leave children unattended when there is a fire burning in the appliance.
4. This gas appliance is not built for solid fuel. **NEVER** use gasoline, gasoline type lantern fuel, kerosene, charcoal lighter fluid, or similar liquids in this appliance. Keep any flammable liquids a safe distance from the appliance.
5. **DO NOT** use chimney cleaners or flame colorants in your appliance.
6. While servicing this appliance, always shut off any electricity or gas to the appliance. This will prevent possible electric shock or burns. Also, make sure the appliance is completely cooled before servicing.
7. To avoid the risk of damaging appliance materials and increasing the risk of spreading a fire, do not use the appliance to cook or warm food.

## A. LISTINGS AND CODE APPROVALS

This appliance has been tested and listed in accordance with ANSI Z21.50-2000, CSA 2.22-M00 and **UL127** standards, and has been listed by Underwriters Laboratories Inc. for installation and operation in the United States as described in this manual.

Check with your local building code agency prior to installing this appliance to ensure compliance with local codes, including the need for permits and follow-up inspections. In the absence of local codes, comply with the **Natural Fuel Gas Code, ANSI Z223.1-Latest Edition** in the United States.

If you need assistance during installation, please contact your local dealer or the Heat-N-Glo Technical Services Department, Hearth & Home Technologies, 20802 Kensington Blvd., Lakeville, MN 55044 (952-985-6000).

DAKOTA	BTUs
Propane	52,000
Natural Gas	61,000

### WARNING!

**This appliance and its components are designed to be installed and operated as a system. Any alteration to or substitution for items in this system, unless allowed by these installation instructions, will void the Underwriters Laboratories listing and may void the product warranty. It may also create a hazardous installation. Read through these instructions thoroughly before starting your installation and follow them carefully throughout your project.**

## B. DESCRIPTION OF THE APPLIANCE

### 1. THE DAKOTA GAS APPLIANCE SYSTEM CONSISTS OF THE FOLLOWING:

- a. Dakota Gas Appliance/Grate
- b. Refractory
- c. Glass Doors
- d. Logs & Burner Assembly
- e. Valve Assembly

### 2. OPTIONAL COMPONENTS INCLUDE:

- a. FPS - Fireplace Surround
- b. HEARTH-BASE - Base for Fireplace Surround
- c. 4036-021 Conversion Kit - NG to LP
- d. 4036-022 Conversion Kit - LP to NG

**Note:** Illustrations used throughout these instructions reflect "typical installations" and are for design purposes only. Actual installation may vary slightly due to individual design preferences. However, minimum and maximum clearances must be maintained at all times.

The illustrations and diagrams used throughout these installations instructions are not drawn to scale.

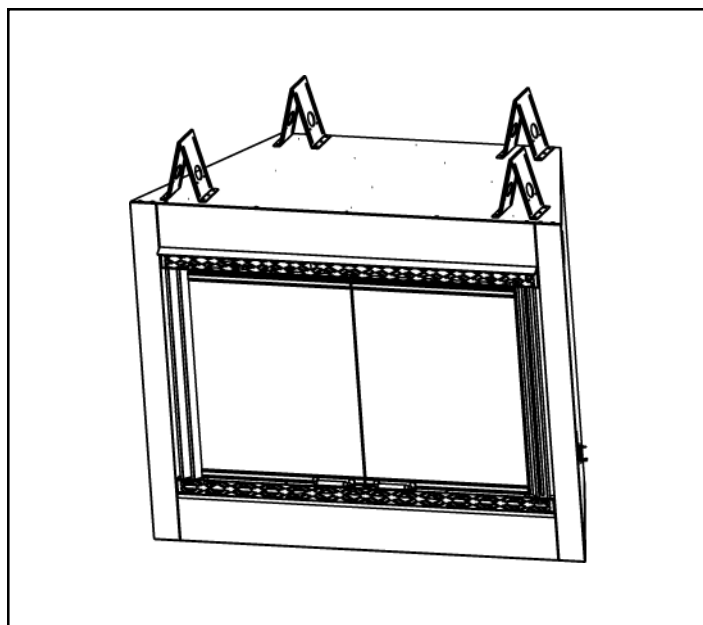
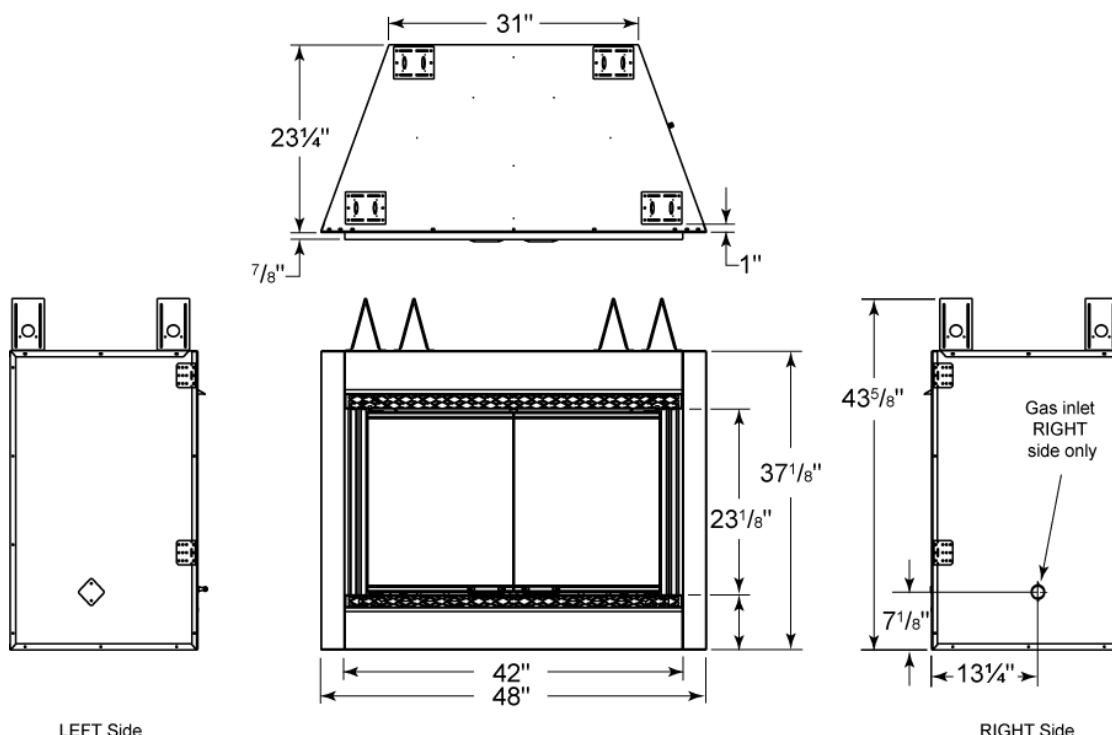
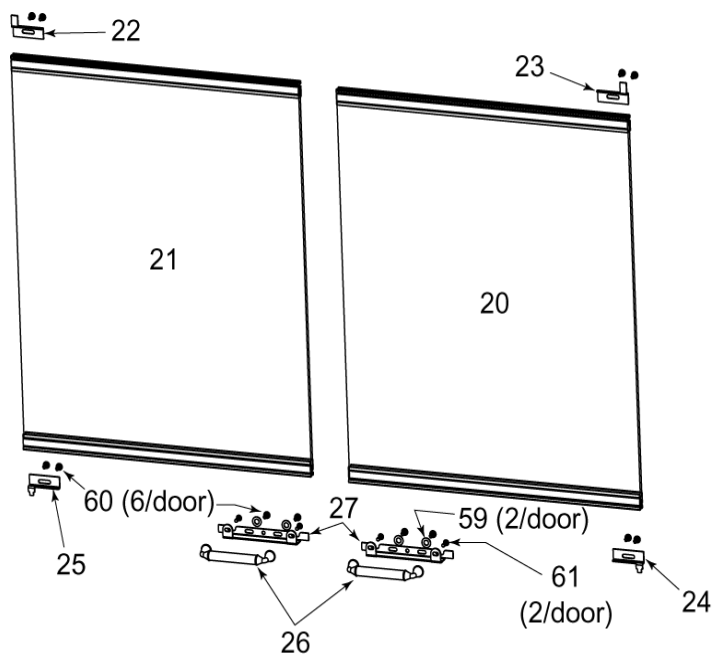
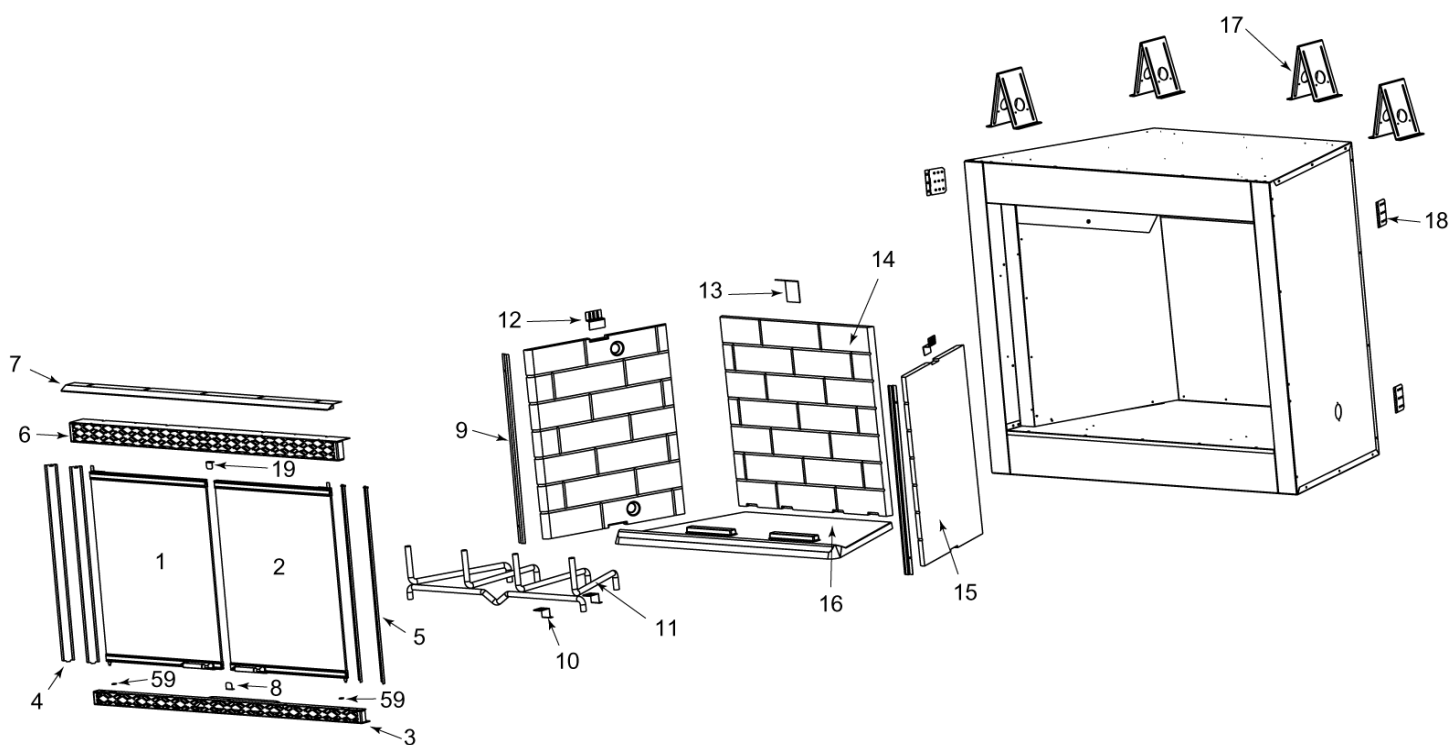


Figure 1 - Dakota Gas Appliance



Dimensions

## C. REPLACEMENT PARTS/EXPLODED VIEW

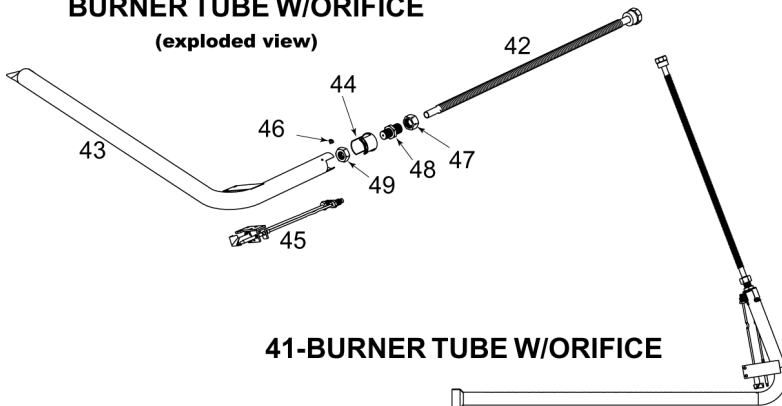


**1 & 2 - DOOR ASSEMBLY**

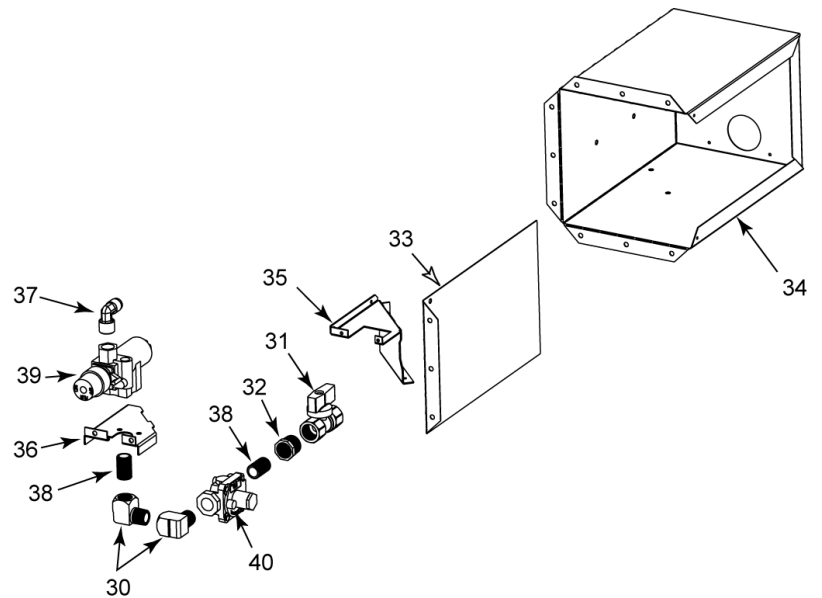
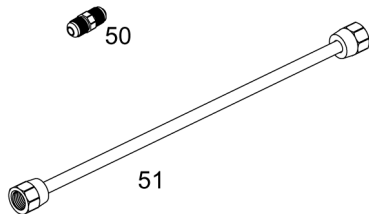
[illegible]

## BURNER TUBE W/ORIFICE

(exploded view)

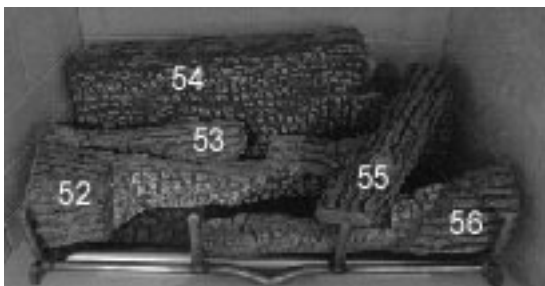


## 41-BURNER TUBE W/ORIFICE



## 28 - VALVE ASSEMBLY-LP

29 - VALVE ASSEMBLY-NG (does not include 38 & 40)



## 58 - Log Assembly

#	Description of Part	DAKOTA	Qty.
28	Valve Assembly - LP	4036-005	1
29	Valve Assembly - NG	4036-006	1
30	Elbow, 90° Brass	4021-027	2
31	ON/OFF Valve	4021-028	1
32	Bushing - 3/8 F NPT / 1/2 M NPT	4021-030	1
33	Valve Box Plate	4036-122	1
34	Valve Box Base	4036-123	1
35	Valve Bracket	4036-124	1
36	Valve Plate	4036-125	1
37	Connector, Brass 90° - Flex	14326	1
38	Pipe Nipple 3/8 NPT	4021-041	2
39	RS Safety Pilot Valve	33992	1
40	Regulator (LP ONLY)	34028	1
41	Burner Tube Assembly - LP	4036-018	1
41	Burner Tube Assembly - NG	4036-019	1
42	18" Flex Tube	4021-032	1
43	Burner Tube w/Pilot Bracket	4036-013	1
44	Air Shutter	4036-315	1
45	RS Safety Pilot Assembly - NG	4036-510	1
45	RS Safety Pilot Assembly -LP	4036-511	1
46	Screw - #6 x 3/16 SMS PPH CAD/ZINC	15906A	1
47	Compression Nut	32553	1
48	Orifice (LP)	32562	1
48	Orifice (NG)	35321	1
49	Jam Nut 1/2-20 803-823	32563	1
50	3/8 SAE Flare, Hex Nipple	4021-031	1
51	18" Aluminum Tube Assembly	4036-810	1
	Valve Access Door	4036-870	1
58	<b>Log Set</b>	4036-700	1
52	Log, Front Left	4036-703	1
53	Log, Left Center	4036-705	1
54	Log, Rear	4036-701	1
55	Log, Right Center	4036-704	1
56	Log, Front Right	4036-702	1
59	Nylon Washer	34362	6
60	Screw - Thread-cutting, Zinc (6/door)	31114	12
61	Screw - #8 32x1/2 PH U/C FLT (2/door)	11559B	4
	* Fiber Ash Bed	4036-730	1
	* Lava Rock	28911	1
	<b>* Consumable, not a warranted part</b>		

## D. LOCATIONS AND CLEARANCES

### 1. APPLIANCE LOCATIONS AND SPACE REQUIREMENTS

This appliance is intended for installation on an outdoor patio or in your yard. It must **never** be installed inside of the warm air envelope of your structure. Figures 2 and 3 show typical installations.

Figure 4 shows minimum clearances to a combustible enclosure.

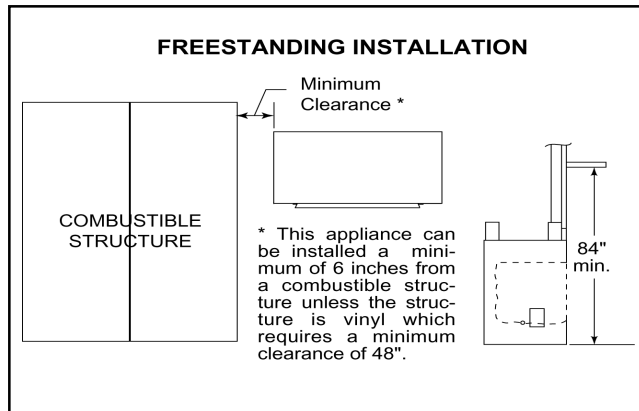


Figure 2 - Appliance Locations

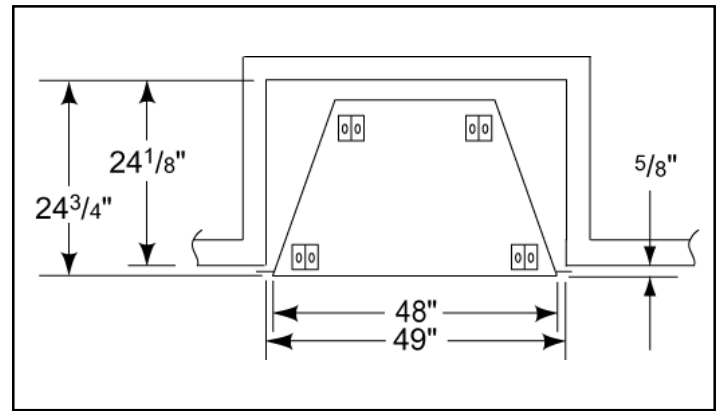


Figure 3 - Installation Along a Wall or an Exterior Chase

These are rough framing dimensions only.

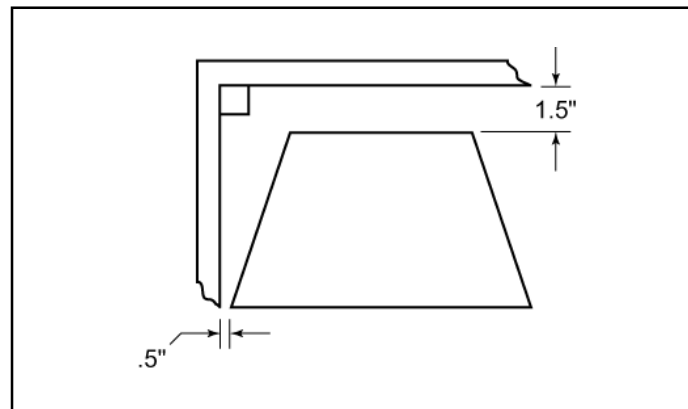
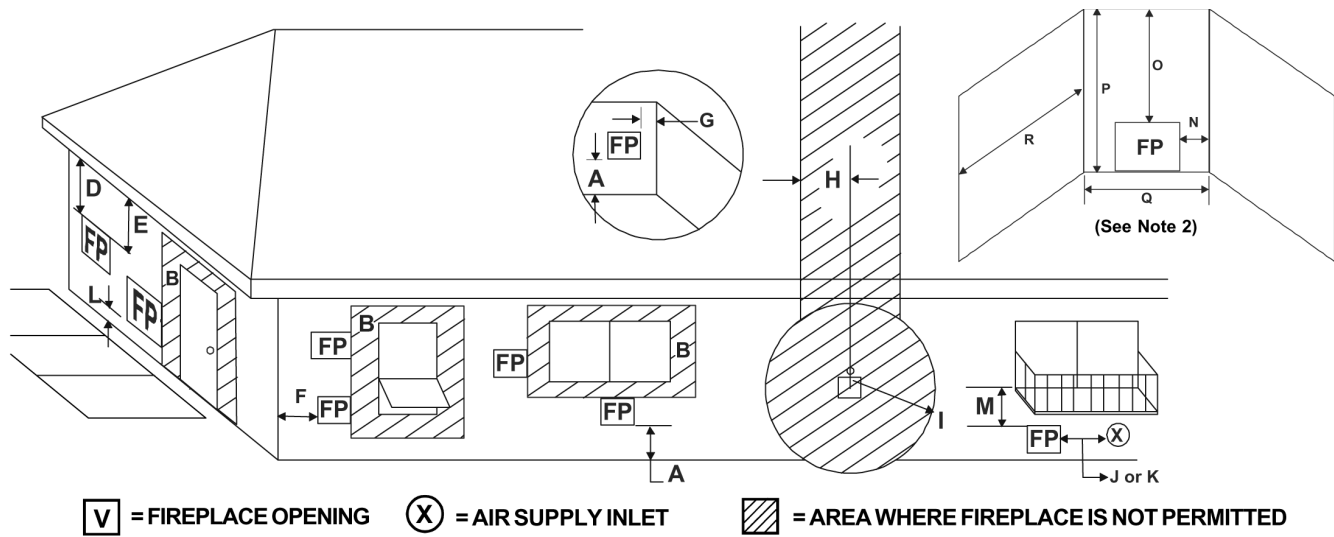


Figure 4 - Minimum Clearances to a Combustible Enclosure

#### WARNING!

To prevent contact with sagging or loose insulation, the appliance must not be installed against vapor barriers or exposed insulation. Localized overheating could occur and a fire could result.





- A = 0" ..... clearances above grade, veranda, porch, deck or balcony  
(See Note 1)
- B\* = 12" ..... clearances to window or door that may be opened, or to permanently closed window.
- D\*\* = 46-7/8" ..... vertical clearance to ventilated soffit located above the terminal within a horizontal distance of 2 feet (60 cm) from the center-line of the terminal
- E\*\* = 46-7/8" ..... clearance to unventilated soffit
- F = 9" ..... clearance to outside corner
- G\* = 6" ..... clearance to inside corner
- H = 3 ft. (Canada) ..... not to be installed above a gas meter/regulator assembly within 3 feet (90cm) horizontally from the center-line of the regulator
- I = 3 ft. (U.S.A.)  
6 ft. (Canada) ..... clearance to service regulator vent outlet and electric service

- J = 9" (U.S.A.)  
12" (Canada) ..... clearance to non-mechanical air supply inlet to building or the combustion air inlet to any other appliance
- K = 3 ft. (U.S.A.)  
6 ft. (Canada) ..... clearance to a mechanical air supply inlet
- L\*\*\* = 54" ..... clearance above paved sidewalk or a paved driveway located on **public** property  
(See Note 1)
- M\*\*\*\* = 46-7/8" ..... clearance under veranda, porch, deck or balcony
- N = 6" ..... non-vinyl siding  
48" ..... vinyl siding
- O = 46-7/8" ..... non-vinyl soffit and overhang  
NOT ALLOWED ... vinyl soffit and overhang
- P = 84"

	Q <sub>MIN</sub>	R <sub>MAX</sub>
Dakota	10 feet	2 x Q <sub>ACTUAL</sub>
1 additional termination cap	Q + 3 feet	1 x Q <sub>ACTUAL</sub>
2 additional termination caps	Q + 6 feet	2/3 x Q <sub>ACTUAL</sub>
3 additional termination caps	Q + 9 feet	1/2 x Q <sub>ACTUAL</sub>
R <sub>MAX</sub> = (2 / # caps plus fireplace) x Q <sub>ACTUAL</sub>		

\* 48" minimum for vinyl windows or vinyl siding.

\*\* Not allowed for vinyl clad soffits.

\*\*\* a fireplace shall not open directly above a sidewalk or paved driveway which is located between two single family dwellings and serves both dwellings.

\*\*\*\* only permitted if veranda, porch, deck or balcony is fully open on a minimum of 2 sides beneath the floor, or if the screened porch guidelines are followed.

**NOTE 1:** Local codes or regulations may require different clearances.

**NOTE 2:** Termination in an alcove space (spaces open only on one side and with an overhang) are permitted with the dimensions specified for vinyl or non-vinyl siding and soffits. 1. There must be 3 feet minimum between terminations or between the fireplace and termination. 2. All mechanical air intakes within 10 feet of a termination must be a minimum of 3 feet below the fireplace hood. 3. All gravity air intakes within 3 feet of the fireplace hood must be a minimum of 1 foot below the termination.

This fireplace is approved for installation onto screened porches with the following guidelines:

Minimum porch area: 96 square feet  
Minimum ceiling height: 92 inches  
Minimum of two walls must be screened  
Minimum top of screen height, side walls: 6 ft. 8 in.  
Minimum screen area: 64 square feet

**NOTE:** There may be some odor and small amounts of soot associated with venting the Dakota onto a screened porch. Ensuring good cross draft ventilation and routine maintenance of the fireplace will maximize comfort and cleanliness.

**Figure 5 - Fireplace Opening Minimum Clearances**

## 2. ASSEMBLE A PREFAB ENCLOSURE

Assemble the FPS prefab enclosure as described in the installation instructions included with the enclosure.

## 3. BUILDING AN OUTDOOR ENCLOSURE

The Dakota gas appliance will fit a framed opening of 49" wide x 43<sup>5</sup>/<sub>8</sub>" tall. The finished cavity depth must be no less than 24<sup>1</sup>/<sub>8</sub>". Figure 6 shows a typical framing (using 2 x 4 lumber) of the appliance, assuming combustible materials are used. All required clearances to combustibles around the appliance must be adhered to. Any framing across the top of the appliance must be above the level of the top standoffs.

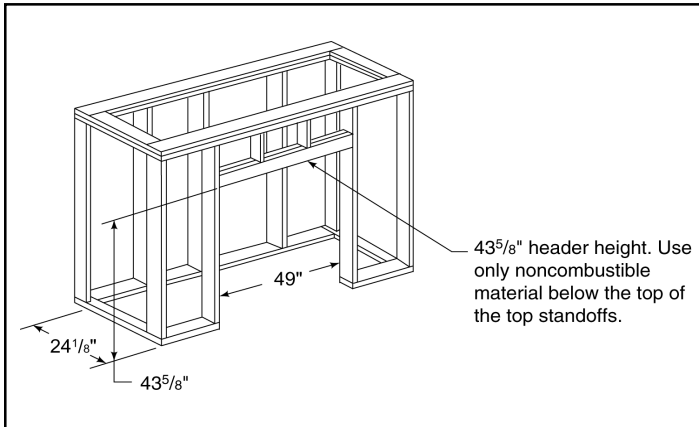


Figure 6 - Framing the Appliance

**When using an enclosure other than the FPS - Fireplace Enclosure, you must construct an access panel that will allow access to any part of the gas line and valve assembly for potential maintenance:**

- Ensure all clearances to combustible materials are followed.
- The location of the valve assembly box within this enclosure must be protected from all external elements.
- The location of the valve assembly box must be so that one person can operate the valve and light the pilot simultaneously.

### CLEARANCES!

A minimum 1<sup>1</sup>/<sub>2</sub>" air clearance must be maintained at the back of the appliance assembly except at the nailing flange where the clearance is 1/2".

Side wall clearances are to be from a line at 1/2" clearance from the nailing flange perpendicular to a line 1<sup>1</sup>/<sub>2</sub>" clearance from back of appliance.

### WARNING!

Do not apply combustible finishing materials over any part of the stainless face of this appliance or a structure fire may result. The appliance front may only be covered with noncombustible materials such as ceramic tile, brick or stone. Do not cover or block any cooling air slots. Do not cover any portion of the opening to the appliance that would prevent the installation of an authorized glass door.

## E. INSTALLATION OF APPLIANCE

Installation should be done by a qualified technician!

### WARNING!

**Before starting, do the following:**

1. Wear gloves and safety glasses for protection.
2. Keep hand tools in good condition. Sharpen cutting edges and make sure tool handles are secure.
3. Always maintain the minimum air space required to the enclosure to prevent fire.

### 1. REMOVE LOGS

Open the doors by sliding the handles toward the outside edges of the doors. See Figure 7. Remove the carton of logs from their shipping location in the appliance.

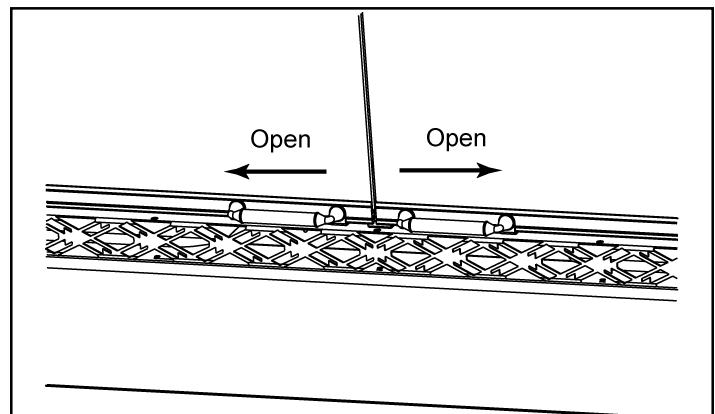


Figure 7 - Door Operation

## 2. POSITIONING THE APPLIANCE

This appliance may be placed on either a combustible or noncombustible continuous flat surface. Follow the instructions for framing in "Building an Outdoor Enclosure" if the FPS prefab enclosure is not used. Slide the appliance into position. **Be sure to provide the minimum air clearance at the sides and back of the appliance assembly.**

**Note:** The gas line **must** be installed on the right side of the appliance.

## 3. LEVELING THE APPLIANCE

Level the appliance side-to-side and front-to-back. Shim with noncombustible material such as sheet metal, as necessary. Secure the appliance (using the nailing flanges located on either side of the appliance) to the vertical framing. If installing the appliance in an FPS prefab enclosure, remove the top standoffs before sliding the appliance into position.

## 4. GAS LINE AND VALVE ASSEMBLY INSTALLATION

- a. Place the burner assembly in the appliance, hand-bend the flexible stainless steel gas line as shown in Figure 8 and feed the thermocouple line, pilot line and stainless steel flexible gas line through the hole in the right side of the appliance. **Make sure the excess pilot and thermocouple line is OUTSIDE the box.**

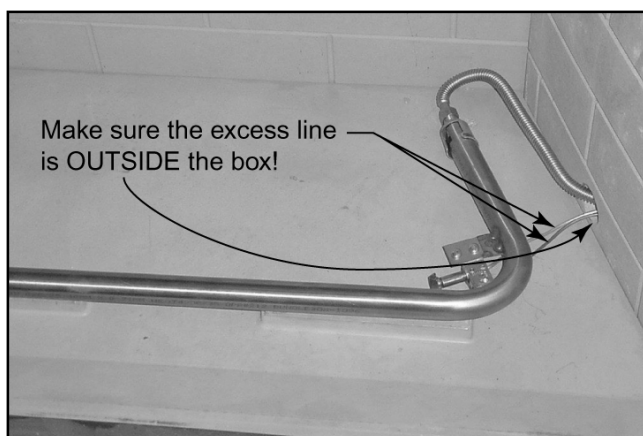


Figure 8 - Placing the Burner Assembly

- b. The appliance is provided with a stainless steel flexible connector and a listed (and Commonwealth of Massachusetts approved) tee-handle manual shutoff valve.

**Note:** Have the gas supply line installed in accordance with building codes by a qualified installer approved and/or licensed as required by the locality. In the Commonwealth of Massachusetts, installation must be performed by a licensed plumber or gas fitter.

### CLEARANCES!

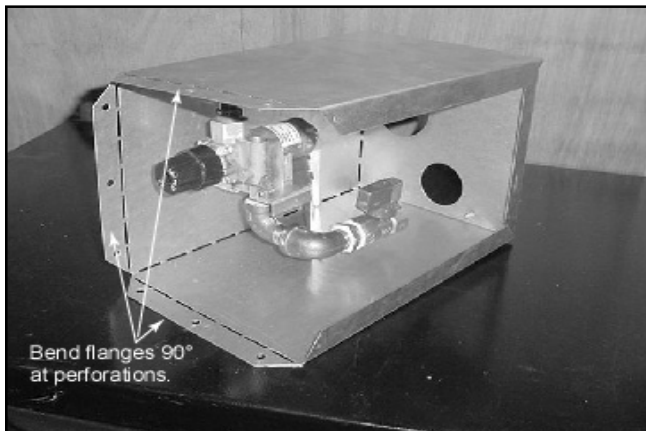
**A minimum 1½" air clearance must be maintained at the back and sides of the appliance assembly except at the nailing flange where the clearance is ½".**

**Side wall clearances are to be from a line at ½" clearance from the nailing flange perpendicular to a line 1½" clearance from back of appliance.**

**Important:** To ensure proper fit of the glass doors, check the appliance opening for square. Measure diagonal distances of the opening to make sure they are equal. If they are not equal, continue to shim the appliance until those diagonals are equal.

- c. Remove the right side of the valve box for easier installation of the gas line. Set aside.

- 1) Bend the flanges of the remaining three sides of the valve box 90° at the perforations (Figure 9), place a bead of silicone (not provided) on the back side of the flanges and slide the valve box into the square hole on the side of the FPS enclosure. (If you are not using an FPS enclosure, the valve must be located in a position where one person can operate the valve and light the pilot simultaneously.)



**Figure 9 - Remove Right Side of Valve Box & Bend Flanges**

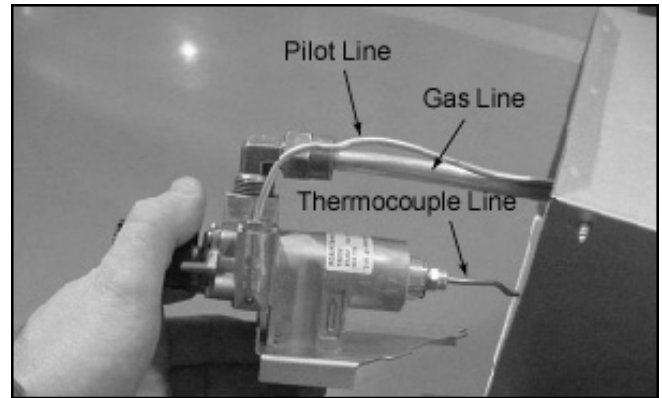
- 2) Secure the 3-sided valve box to the FPS enclosure with the drywall screws provided. See Figure 10.



**Figure 10 - Secure Valve Box to FPS**

- d. Remove the valve from the valve box for ease of assembly by removing the two screws holding the valve to the valve bracket.

- e. Reach through the back access hole of the enclosure and feed the thermocouple line, aluminum gas line and pilot line through the rear of the valve box assembly. Connect to the valve. See Figure 11. Tighten fittings to eliminate gas leaks.



**Figure 11 - Connect Lines to Valve**

- r. Place the valve back on the valve bracket in the valve box and secure using the two screws previously removed.
- t. Reach through the back access hole of the enclosure and connect the flexible stainless steel gas line to the soft aluminum gas line with the male flare connector supplied. See Figure 12.



**Figure 12 - Connect Flexline**

- h. Connect the main gas line to the manual shutoff valve using 1/2" male pipe thread (not supplied). Bend the flange of the right side of the valve box 90° at the perforations, place a bead of silicone on the back side of the flange and replace in the valve box. Fasten with remaining screws.
- i. Check for gas leaks with soapy water.
- j. Place a bead of silicone around the inside flanges and the holes in the corners of the valve access door. Place the valve box cover on the valve box and secure using the mounting holes on the edge of the box.

## 5. COMPLETION OF THE ENCLOSURE AND FINISHING MATERIAL

### a. Complete the Enclosure

Minimum clearances must be maintained between the appliance sides and the enclosure as well as the appliance back and the enclosure. See "Building an Outdoor Enclosure" for framing details.

**Note:** Use only a noncombustible material to finish the face of the appliance below the level of the front standoffs. A noncombustible material such as USG MICORE CV230 Mineral Fiber Board, or USG DUROCK Cement Board is recommended for this purpose.

### b. Do not install combustible materials over the face of the appliance! This poses a safety hazard and may start a fire. You may use only noncombustible material over the face of the appliance.

#### 1) Combustible Material

Material which is made of or surfaced with wood, compressed paper, plant fibers, plastics, or any material capable of igniting and burning, whether flame proofed or not, plastered or unplastered.

#### 2) Noncombustible Material

Material which will not ignite and burn. Such materials are those consisting entirely of steel, iron, brick, tile, concrete, slate, glass or plasters, or any combination thereof.

#### 3) Noncombustible Sealant Material

Sealants which will not ignite and burn; General Electric RTV103 Black (or equivalent), Rutland, Inc. Fireplace Mortar #63 (or equivalent).

After completing the framing and applying the facing material (dry wall) over the framing, a ½" wide (maximum) bead of noncombustible sealant must be used to close off any gaps at the top and sides between the appliance and facing to prevent cold air leaks.

Only noncombustible materials may be used to cover the metal appliance front.

## 6. GLASS DOORS

- a. Included with and pre-installed in the appliance.
- b. If the doors need adjusting, open them and loosen the screws on the top and bottom pivot pins. Slide each door in the desired direction and tighten the screws.
- c. If the handles need adjusting, tighten or loosen the screws allowing the handles to move as desired.

## 7. GRATE ASSEMBLY AND FIBER ASH BED

- a. Position the burner tube on the raised burner supports.
- b. Place the fiber ash bed on the floor of the firebox, ensuring that it does not cover the burner.
- c. Position the grate assembly over the burner assembly and fiber ash bed, and center from left to right. The back legs will be located in the grate brackets.
- d. Attach the burner to the grate with the enclosed stainless steel wire to hold the burner in position. Wrap the wire around the burner and the grate bar. See Figure 13.

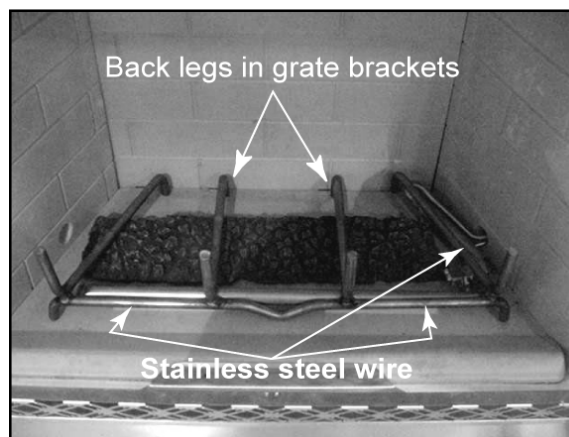


Figure 13 - Fiber Ash Bed

## 8. LOG PLACEMENT

### a. Rear Log

The rear log is placed on the grate against the back wall of the appliance. See Figure 14.

### b. Front Right Log

Place the front right log on the grate against the front tines of the grate. See Figure 15.

### c. Front Left Log

The front left log will be located on the grate with the left side of the log against the left front tine of the grate. The right side of the log will angle toward the center of the grate. See Figure 16.

### d. Left Center Log

Place the left center log on the grate behind the front left log. See Figure 17.

### e. Right Center Log

Place the right center log on top of the front right log and the rear log. See Figure 18.



Figure 17 - Left Center Log

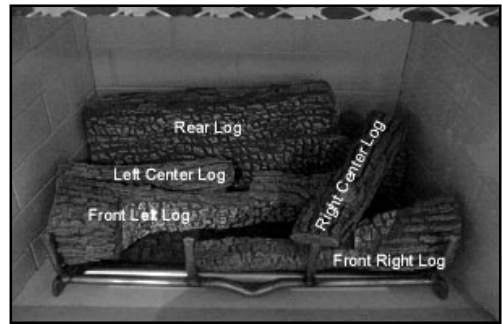


Figure 18 - Right Center Log



Figure 14 - Rear Log



Figure 15 - Front Right Log



Figure 16 - Front Left Log

## 9. LAVA ROCK

Spread a two-pound bag of lava rock (included) between the burner and the ashlip. See Figure 19.



Figure 19 - Lava Rock

## F. LIGHTING INSTRUCTIONS FOR THE “S” SERIES

### FOR YOUR SAFETY READ BEFORE LIGHTING

**WARNING: If you do not follow these instructions exactly, a fire or explosion may result causing property damage, personal injury or loss of life.**




- |  |   |
|--|---|
| <p>A. This appliance has a pilot which must be lit by hand. When lighting the pilot, follow these instructions exactly.</p> <p>B. BEFORE LIGHTING smell all around the appliance area for gas. Be sure to smell next to the floor because some gas is heavier than air and will settle to the floor.</p> <p><b>WHAT TO DO IF YOU SMELL GAS</b></p> <ul style="list-style-type: none"> <li>• Do not try to light any appliance.</li> <li>• Do not touch any electric switch; do not use any phone in your building.</li> <li>• Immediately call your gas supplier from a neighbor's phone. Follow the gas supplier's instructions.</li> <li>• If you cannot reach your gas supplier, call the fire department.</li> </ul> | <p>C. Use only your hand to push in or turn the gas control knob. Never use tools. If the knob will not push in or turn by hand, don't try to repair it, call a qualified service technician. Force or attempted repair may result in a fire or explosion.</p> <p>D. Do not use this appliance if any part has been under water. Immediately call a qualified service technician to inspect the appliance and to replace any part of the control system and any gas control which has been under water.</p> |
|--|---|

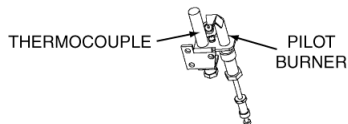
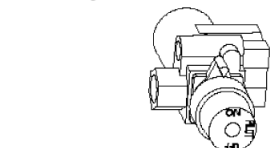
Due to high surface temperatures, keep children, clothing and furniture away.

Keep burner and control compartment clean. See installation and operating instructions accompanying the appliance.

**FOR YOUR SAFETY:** Do not store or use gasoline or other flammable vapors and liquids in the vicinity of this or any other appliance.

### LIGHTING INSTRUCTIONS

- |   |  |
|---|--|
| <p>1. STOP! Read the safety instruction label.</p> <p>2. Turn gas control knob clockwise  to "OFF".</p> <p>3. Wait five minutes to clear out any gas. If you smell gas, STOP! Follow "B" on the safety information label. If you don't smell gas, go to next step.</p> <p>4. Find pilot--follow metal tube from gas control. The pilot is behind the burner pan.</p> | <p>5. Turn knob on control counterclockwise  to "PILOT".</p> <p>6. Push in the knob all the way and hold in. Immediately light the pilot with the use of a paper match and lighter rod. Continue to hold the control knob in for about one minute after the pilot is lit. Release button and it will pop back up. Pilot should remain lit. If it goes out, repeat steps 3 through 7.</p> <p>If button does not pop up when released, stop and immediately call your service technician or gas supplier. If the pilot will not stay lit after several tries, turn the gas control knob to "OFF" and call your service technician or gas supplier.</p> <p>7. Turn gas control knob counterclockwise  to "ON". Knob can be turned to "ON" only if the control knob is popped out.</p> |
|---|--|



### TO TURN OFF GAS APPLIANCE

1. Turn gas control clockwise  to "OFF. Do not force.

34008

## G. MAINTENANCE INSTRUCTIONS

### 1. CLEANING THE BURNER AND CONTROL COMPARTMENT

Keep the burner and control compartment clean by brushing and vacuuming at least once a year. Always turn off the gas valve before cleaning.

### 2. CHECKING FLAME PATTERNS

Check the flame of the burner periodically, making sure the flames are steady, not lifting or floating. Adjust the air shutter if necessary. The flame color should be blue with yellow tips. The thermocouple tip should be covered with flame. See Figure 20.

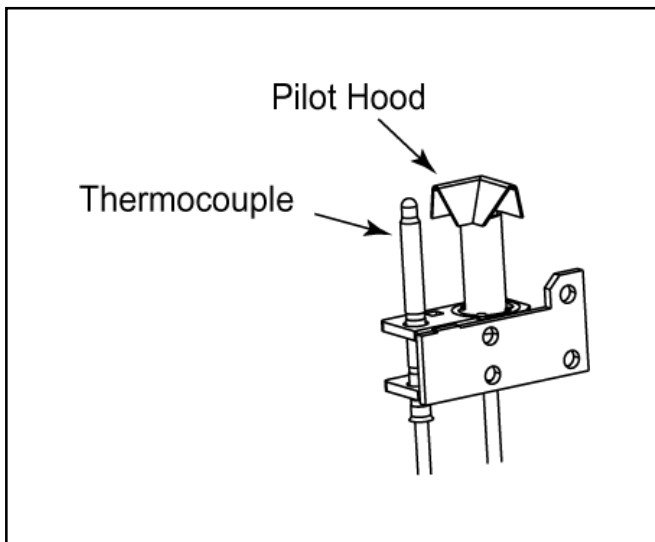


Figure 20 - Thermocouple

### 3. ADJUSTING THE AIR SHUTTER

To adjust the air shutter, remove the logs from the appliance. Loosen the screw on the burner air shutter and rotate the shutter to open. Tighten the screw and reinstall the logs.

### 4. CLEANING THE GLASS

Never operate this appliance without the glass properly secured in place or if the glass is broken.

In the event of glass breakage, vacuum glass pieces with a shop vac. **DO NOT VACUUM IF THE PIECES ARE HOT!** Replace the broken door with a Heat-N-Glo LifeStyle door assembly only. This may be ordered direct or through your local distributor. Never use substitute materials. Only fully tempered soda lime safety glass may be used on this appliance.

### 5. LOGS

#### a. Cleaning the Logs

Your gas logs require little care. Keep the burner assembly, logs and burner area surrounding the logs clean by vacuuming or brushing with a dry paint brush at least twice a year or as necessary.

#### CAUTION:

**The logs can get very hot. Handle only when they are cool. After burning, the logs become fragile, so take care in handling.**

#### Note:

- Always turn off the gas to the pilot before cleaning. For relighting, refer to lighting instructions in this manual.
- Always keep the appliance clear and free from combustible materials, gasoline, and other flammable vapors and liquids.
- Never obstruct the flow of combustion and ventilation air. Keep the front of the appliance clear of all obstacles and materials.
- Leave clearance of at least 36" from the front of the appliance.
- The air shutter should not be blocked.

#### b. Removing the Logs

Remove the logs in reverse order of placement (see "Log Placement").

### 6. STAINLESS STEEL PARTS

Weather and heat exposure may cause discoloration of stainless steel parts. This is normal and not warranted.



## H. TROUBLESHOOTING - "S" SERIES

Symptoms	Possible Causes	Corrective Action
1. Match will not light pilot.	a. Main gas shutoff valve closed.	Make sure that the shutoff valve located on the incoming gas line is open.
	b. Air in the gas line.	Light a match. Turn valve knob to "PILOT" position and depress. Keep match near pilot burner until it lights.
	c. Valve knob is in "OFF" position.	Turn valve knob to "PILOT" position and depress. Keep match near pilot burner until it lights.
	d. Pilot orifice is plugged, not allowing gas to flow.	This repair requires tools and some degree of experience. Call a qualified service technician.
	e. No gas supply to the appliance.	Check the plumbing to ensure the appliance has been hooked up to the gas supply line. The propane tank is empty.
	f. Kink or break in line.	Replace line.
2. Pilot lights, but will not stay lit after carefully following lighting instruction.	a. Thermocouple too tight or too loose.	Thermocouple must be attached to the valve finger-tight, plus a 1/8 turn with a wrench.
	b. Weak pilot flame.	Pilot flame must engulf the thermocouple. Clean and/or adjust pilot for maximum flame impingement on the thermocouple.
	c. Defective thermocouple.	Check the thermocouple with a millivolt meter as follows: Disconnect the thermocouple from the valve and connect the red lead of the meter to the silver end of the thermocouple. Now connect the black lead of the meter to the copper tubing of the thermocouple. Light the pilot and keep the knob depressed while taking readings. The meter readings should be greater than 14 mV. If not, replace thermocouple.
3. Pilot "ON". No gas to main burner, valve knob "ON".	a. A blockage is preventing gas flow.	Inspect the burner orifice for obstruction, including spiders and webs. Call a qualified service technician.
	b. Defective valve.	Replace gas valve. Call a qualified service technician.
4. Irregular burn pattern.	a. Ice & debris clog ports.	Clear away ice or debris, being careful not to force that ice or debris into the ports.

Homeowner's Notes

# Index

## **A**

Air Clearance 13  
Air Shutter 16  
Appliance Locations 8

## **B**

Building Codes 2  
Burner 16  
Burner Assembly 11

## **C**

Chimney Cleaners 2  
Cleaning  
    Burner & Control Compartment 16  
    Chimney 2  
    Logs 16  
Clearance 10  
Clearances 8, 9  
Codes  
    Building 2  
    Gas 2  
Combustible Finishing Materials 10  
Combustible Material 13  
Control Compartment 16

## **D**

Description of the Fireplace System 3  
Door Operation 10  
Doors 13

## **E**

Enclosure 13  
Enclosure, Outdoor 10  
Exploded Views 4

## **F**

Fiber Ash Bed 13  
Finishing Material 13  
Flame Colorants 2  
Flame Patterns 16  
Flanges 12  
Flexible Gas Line 11, 12  
FPS Prefab Enclosure 10  
Framing 10  
Fuel 2

## **G**

Gas Codes 2  
Gas Line 11  
Glass 16  
Glass Doors 11, 13  
Grate Assembly 13

## **I**

Installation  
    Fireplace 10  
Installation Along a Wall 8  
Insulation 8

## **L**

Lava Rock 14  
Leveling 11  
Lighting Instructions 15  
Locations and Clearances 8  
Log Placement 14  
Logs 10, 16

## **M**

Maintenance Instructions 16  
Mantel 8  
Material, Sealant 13  
Minimum Clearances 8

## **N**

Noncombustible Material 13  
Noncombustible Sealant Material 13

## **O**

Outdoor Enclosure 10  
Overhang 8

## **P**

Pilot Line 11  
Positioning the Appliance 11  
Prefab Enclosure 10

## **R**

Replacement Parts 4

## **S**

Safety 2, 10  
Solid Fuel 2  
Space Requirements 8

## **T**

Thermocouple Line 11  
Troubleshooting 17

## **V**

Valve Assembly 11  
Valve Box 12



Hearth & Home Technologies - Lakeville  
20802 Kensington Blvd.  
Lakeville, MN 55044  
www.fireplaces.com

## **WARRANTY FOR HEAT-N-GLO FIREPLACES**

The limited warranty will not become effective until you have mailed the completed warranty card to:  
Hearth & Home Technologies Inc., a Division OF HON Industries  
20802 Kensington Blvd., Lakeville, MN 55044.

This card must be mailed within 60 days of the fireplace installation.

Subject to the conditions set forth herein, HEARTH & HOME TECHNOLOGIES INC. (HHT) extends the following limited warranty with respect to your Heat-N-Glo fireplace, excluding accessories, chimney components and glass doors.

If HHT is satisfied that any part or portion of the fireplace covered by this warranty is defective in material or workmanship under normal use and service as described in the operating instructions, HHT will take the following actions:

1. Within the first five (5) years from the date of installation, HHT shall, at its option, replace or repair any such defect in material or workmanship, at HHT's expense. HHT SHALL NOT BE RESPONSIBLE FOR ANY OTHER LABOR COSTS, OR EXPENSES, INCLUDING INDIRECT, INCIDENTAL OR CONSEQUENTIAL DAMAGES.
2. During the sixth (6th) through the (10th) years after the date of installation, HHT shall supply replacement parts or parts at no charge, but SHALL NOT BE RESPONSIBLE FOR ANY LABOR, TRANSPORTATION, OR OTHER INDIRECT DAMAGES.
3. During the eleventh (11th) through the fifteenth (15th) years after date of installation, HHT will send to you, FOB its factory, replacement parts (if available) at the current minimum wholesale price, but HHT SHALL NOT BE RESPONSIBLE FOR ANY LABOR, TRANSPORTATION OR OTHER INDIRECT DAMAGES.
4. During the first six (6) months after installation, HHT shall, at its option, replace or repair the glass doors and any electrical components, if operation is faulty. (This does not include glass panels broken during shipment, misuse or careless handling.) After the first six (6) months, HHT will sell to you, FOB its factory, replacement parts at the current list price, but HHT SHALL NOT BE RESPONSIBLE FOR ANY LABOR, TRANSPORTATION OR OTHER INDIRECT DAMAGES. IF GLASS DOORS OTHER THAN FACTORY DOORS ARE USED ALL WARRANTY AND LIABILITY ON THE FIREPLACE IS VOIDED.

HHT may discharge its entire warranty liability by refunding the price of the product.

Products made by other manufacturers, sold with the fireplace or thereafter are not covered by this limited warranty.

This limited warranty will be void if the fireplace is not installed according to the installation instructions. The limited warranty also is void if the fireplace is not operated, at all times, according to the operating instructions furnished. The limited warranty will also be void if the fireplace is removed from the place originally installed.

EXCEPT TO THE EXTENT PROVIDED BY LAW, NO IMPLIED WARRANTIES OF MERCHANTABILITY OR FITNESS FOR A PARTICULAR PURPOSE, AND NO IMPLIED WARRANTIES SHALL APPLY TO THE FIREPLACE AFTER THE ABOVE LIMITED WARRANTY HAS EXPIRED.

In states that do not allow limitations on how long implied warranty lasts, or do not allow exclusion of indirect damages, those limitations or exclusions may not apply to you. You may also have additional rights not covered in this limited warranty.

HHT reserves the right to make changes at anytime, without notice, in design, material, specifications and prices and the right to discontinue styles and products.

• UNDERWRITERS LABORATORIES FILE NO. MH5850

Jan 2003