

heatilator®

The first name in fireplaces



Hearth & Home Technologies-Mt. Pleasant
1915 W. Saunders Street
Mt. Pleasant, Iowa 52641
Division, HON INDUSTRIES
www.heatilator.com

Installation & Operating Instructions

DYNASTY GAS LOG SET MANUAL LIGHT FD36 FD42 FOR RESIDENTIAL USE



WARNING: If the information in this manual is not followed exactly, a fire or explosion may result causing property damage, personal injury or loss of life.

- Do not store or use gasoline or other flammable vapors and liquids in the vicinity of this or any other appliance.
- What to do if you smell gas
 - Do not try to light any appliance.
 - Do not touch any electrical switch; do not use any phone in your building.
 - Immediately call your gas supplier from a neighbor's phone. Follow the gas supplier's instructions.
 - If you cannot reach your gas supplier, call the fire department.
- Installation and service must be performed by a qualified installer, service agency or the gas supplier.

WARNING!

Improper installation, adjustment, alteration, service or maintenance can cause injury or property damage. Refer to this manual. For assistance or additional information, consult a qualified installer, service agency or the gas supplier.

PLEASE RETAIN THIS MANUAL FOR FUTURE REFERENCE

Installation and service must be performed by a qualified installer, service agency or the gas supplier.

TABLE OF CONTENTS

A. Listings and Code Approvals	3
B. Description of the Dynasty Gas Log Set/Manual Light	3
C. Important Information	4
D. Step-by-Step Installation	5
E. Operating Instructions for the Dynasty Gas Log Set	8
F. Glass Doors	9
H. Inspecting the Venting System	9
G. Cleaning	9
I. Important Safeguards	9
J. Servicing	10
K. Owner Registration/Warranty	10
L. Replacement Parts	10
M. Troubleshooting - Manual Series	11
Warranty	12

Safety Precautions

1. Please read these installation instructions completely before beginning installation procedures. Failure to follow them could cause a fireplace malfunction resulting in serious injury and/or property damage.
2. Always check your local building codes prior to installation. The installation must comply with all local, regional, state, and national codes and regulations.
3. **NEVER** leave children unattended when there is a fire burning in the fireplace.
4. This gas log set is built to burn natural gas **only**.
5. The flue damper must be open at all times when the fireplace is in use.
6. While servicing this log set, always shut off any electricity or gas to the appliance. This will prevent possible electrical shock or burns. Also, make sure the appliance is completely cooled before servicing.
7. Solid fuels cannot be burned in a fireplace where the decorative gas appliance is installed.

A. LISTINGS AND CODE APPROVALS

The Dynasty Series Gas Log Set/Manual Light has been tested and listed in the U.S. and Canada in accordance with **ANSI Z21.84-1999** (Manually Lighted, Natural Gas Decorative Gas Appliance for Installation in Solid Fuel-Burning Appliances). It has been listed by Underwriters Laboratories Inc. for installation and operation in the United States and Canada as described in these Installation and Operating Instructions. All components are UL, AGA, CGA or CSA safety certified.

Check with your local building code agency prior to installing this appliance to ensure compliance with local codes, including the need for permits and follow-up inspections. In the absence of local codes, comply with the **National Fuel Gas Code, ANSI Z223.1-Latest Edition** in the U.S.; in Canada, the **CAN/CGA B149 Installation Codes**. If any assistance is required during installation, please contact your local dealer.

HEATILATOR® is a registered trademark of Hearth & Home Technologies Inc., Division of HON Industries.

WARNING!

This Heatilator appliance and its components are designed to be installed and operated as a system. Any alteration to or substitution for items in this system, unless allowed by these installation instructions, will void the Underwriters Laboratories listing and may void the product warranty. It may also create a hazardous installation. Read through these instructions thoroughly before starting your installation and follow them carefully throughout your project.

WARNING!

Do not use this appliance if any part has been under water. Immediately call a qualified service technician to inspect the appliance and to replace any part of the control system and any gas control which has been under water.

B. DESCRIPTION OF THE DYNASTY GAS LOG SET/ MANUAL LIGHT

The HEATILATOR® Dynasty Gas Log Set/Manual Light consists of the following:

1. Burner/Hearth Assembly
2. Grate Assembly
3. Four Fiber Logs

Tools and building supplies normally required for installation:

Pliers
Phillips screwdriver
Tape measure
Crescent wrenches
Gas Shutoff Valve

DYNASTY SERIES NOMENCLATURE

FD42	Logset Order Code Number
FD	Dynasty Series Log Set/Manual Light
36 42	36" Log Set 42" Log Set

Note: The illustrations and diagrams used throughout these installation instructions are not drawn to scale.

The Dynasty Gas Log Set/Manual Light is not equipped with an automatic valve system. The log sets are equipped with a gas pressure regulator. The Dynasty Gas Log Set/Manual Light is for use only with, and available only for, natural gas. These HEATILATOR gas log sets and components have been tested and will operate safely when installed in accordance with this installation manual. This decorative appliance is a highly engineered system. Unless you use HEATILATOR components which have been designed for the system, you may create a fire hazard.

Model No.	BTU/Hr. Input	Orifice
FD36	50,000	.144
FD42	60,000	.157

WARNING!
This valve has been preset at the factory. Altering settings may result in fire hazard or bodily injury.

GAS PRESSURE	
Inlet gas supply pressure (N.G.)	4.5 (min.) - 7.0 (max.) in. w.c.
Optimal manifold pressure (N.G.)	3.5 in. w.c.

C. IMPORTANT INFORMATION

Installer: Please leave these instructions with the owner.

Owner: Please retain these instructions for future reference.

Important: Read these instructions carefully before making installation.

- This appliance must be installed only in a solid-fuel burning (woodburning) fireplace with a working flue and constructed of noncombustible materials.
- The fireplace area must be kept clear and free from combustible materials, gasoline and other flammable vapors and liquids.
- A fireplace screen must be in place when the log set is burning and, unless other provisions for combustion air are provided, the screen shall have an opening(s) for introduction of combustion air.
- Installation and the provisions for combustion and ventilation air must conform with the latest edition of the **National Fuel Gas Code ANSI Z223.1** or in Canada, the current **CAN/CGA-B149.1** and **B149.2**.
- The appliance and its individual manual shutoff valve must be disconnected from the gas supply piping system during any pressure testing of that system at test pressures in excess of 1/2 PSIG.
- The appliance must be isolated from the gas supply piping system by closing its individual manual shutoff valve during any pressure testing of the gas supply pipe system at test pressure equal to or less than 1/2 PSIG.
- The minimum size fireplace in which the log set can be installed and the minimum permanent free opening that must be provided by either the fireplace chimney or chimney damper to vent the flue gases must be in accordance with the tables in Figure 1.
- Any chimney damper must be fixed so that the minimum permanent vent opening will be maintained at all times. (Fixed by screw, bolt at damper edge or hole in damper.)
- Solid fuel shall not be burned in a fireplace where a decorative gas appliance is installed.

High Altitude Installation

For U.S. installation, appliances are tested and approved for elevations from 0-2000 feet. When installing this Dynasty manual series gas log set at an elevation above 2000 feet, National Fuel Gas Codes require a decrease of the input rating by changing the existing burner orifice to a smaller size. Input should be reduced 4% for each 1000 feet above sea level. Check with the local gas utility for proper orifice size identification. The current orifice is available from your Heatilator distributor.

For Canada, appliances are certified for elevations from 0-4500 feet. When installing this Dynasty manual gas log set at an elevation between 0-4500 feet in Canada, the input rating does not need to be reduced. When installing this log set at an elevation above 4500 feet in Canada, check with local authorities.

Minimum Dimensions

Minimum Firebox Dimensions				Minimum Permanent Free Opening		
Set Size	Depth	Height	Front Opening	Chimney Ht. (ft.)	36"	42"
36"	13"	16"	30"			
42"	13"	16"	34"	10'	40 sq. in.	40 sq. in.

Note: Do not use on a chimney flue less than 8" diameter and less than 10' high.

Figure 1

D. STEP-BY-STEP INSTALLATION

1. Unpacking

Carefully remove all parts from the shipping container. Your set includes four fiber logs, a burner assembly, the grate assembly, mineral wool, lava rock, damper stop and 10" flex connector.

2. Installing Damper Stop

To install the damper stop: Open the damper to the fully open position and secure it open with the stop as shown in Figure 2.

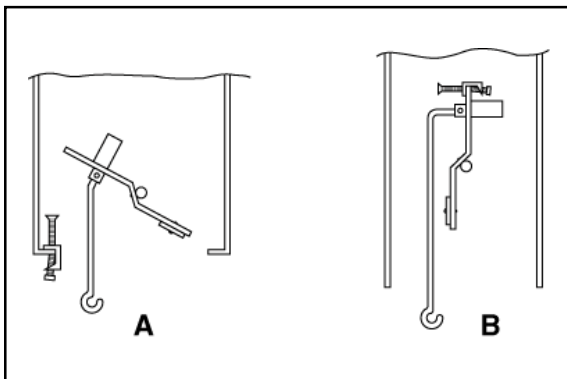


Figure 2 - Damper Operation

If the damper stop doesn't fit your application, use a permanent means that will keep the damper open at least to the minimum vent opening outlined in Figure 1.

3. Positioning the Log Set in the Fireplace

The burner assembly should be located as far back as possible and centered left to right in the fireplace.

4. Gas Line Connection

- Remove the four screws that secure the burner assembly to the hearth pan. See Figure 3.
- Set the burner assembly aside.



Figure 3 - Burner Assembly

- The gas line connection for the Dynasty Series Gas Log Set may be plumbed from either the right or left side of the appliance.
- The 1/2" iron pipe incoming gas line should be piped into the regulator compartment from either the right or left side and connected to the brass flare connector and the 10" stainless steel flex line (supplied). See Figure 4.

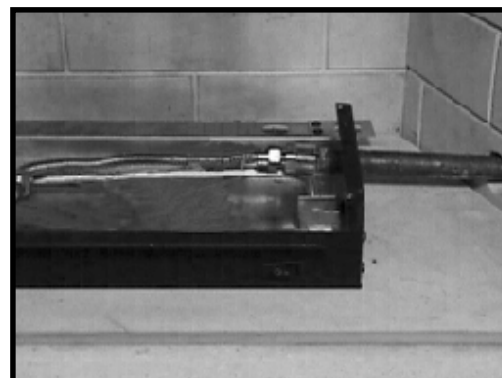


Figure 4 - Gas Line Connection

- e. Bleed the gas line to extract any air that may have been trapped inside the pipe. All connections must be tightened and checked for leaks with a soap and water solution or a leak detector. **DO NOT USE AN OPEN FLAME.** Turn off the gas after the leak test.
- f. Reassemble the burner assembly with the four screws removed earlier.

Note: Be sure when reassembling the burner assembly that the burner neck is properly positioned on the orifice.

Note: An individual manual shutoff valve (not supplied) is required when installing this appliance. The manual shutoff valve must be located in an easily accessible area, no more than 6 feet from the appliance.

5. Grate Placement

The grate assembly should be positioned where the rear two legs of the grate fit into the two large holes located on the rear of the pan. See Figure 5.



Figure 5 - Placing the Grate Assembly

6. Log Placement

a. Front Log

The front log is supplied with locating slots in the base of the log. Line up the locating slots with the front locating tabs on the grate and gently push the log onto the tabs. See Figure 6.



Figure 6 - Placing the Front Log

b. Middle Log

The middle log is also supplied with locating slots in the base of the log. Align the slots with the middle locating tabs on the grate and push the log into place. See Figure 7.



Figure 7 - Middle Log

c. Rear Log

The rear log is supplied with locating holes in the base of the log. Hold the rear log upright with the notched end of the log in your left hand and place the rear log over the two locating pins on the rear of the grate. Align the holes with the pins. See Figure 8.



Figure 8 - Rear Log

d. Top Log - 36"

The 36" top log has two locating holes in the bottom of the log. Align the two holes with the two locating pins on the top of the middle log and set the log in place. See Figure 9.

e. Top Log - 42"

The 42" top log is supplied with a locating hole on the bottom of the log, close to its center. The right side of the top log contains a locating notch. Align the hole in the top log with the pin in the middle log; align the notch to the locating tab on the right side of the front log. See Figure 9.



Figure 9 - Top Log for FD36 & FD42 Series

7. Mineral Wool, Fire Glow, Lava Rock and Vermiculite

a. Mineral Wool

Place approximately 1/2" diameter pieces of mineral wool on the top of the burner covering from underneath the front log to the front of the burner. Cover the entire length of the burner pan but **do not** cover the burner ports. See Figure 10.



Figure 10 - Placing Mineral Wool

b. Fire Glow

Fire Glow (Fire 98) is a flame colorant material that also adds to the realism of the gas fireplace flame. After placing the mineral wool, sprinkle some of the fire glow on the top of the burner assembly and the mineral wool.



Figure 11 - Placing Lava Rock

c. Lava Rock

Lava rock is placed on the hearth refractory of the fireplace, all around the log set. See Figure 11.

d. Vermiculite

When placing the vermiculite, sprinkle it evenly over the area covered by the lava rock.

It is not necessary to use the entire bag of the mineral wool, the Fire Glow, the lava rock, or the vermiculite. Save the remaining portions for later use.

8. Electrical Requirements

Appliance Requirements: This appliance does **not** require 110V AC supply for operation.

E. OPERATING INSTRUCTIONS FOR THE DYNASTY GAS LOG SET

FOR YOUR SAFETY READ BEFORE LIGHTING

WARNING: If you do not follow these instructions exactly, a fire or explosion may result causing property damage, personal injury or loss of life.

- A. This appliance has a manually lighted burner, and must be lit by hand. When lighting the burner, follow these instructions exactly.
- B. BEFORE LIGHTING smell all around the appliance area for gas. Be sure to smell next to the floor because some gas is heavier than air and will settle to the floor.
- WHAT TO DO IF YOU SMELL GAS**
- Do not try to light any appliance.
 - Do not touch any electric switch; do not use any phone in your building.
 - Immediately call your gas supplier from a neighbor's phone. Follow the gas supplier's instructions.
 - If you cannot reach your gas supplier, call the fire department.
- C. Do not use this appliance if any part has been under water. Immediately call a qualified service technician to inspect the appliance and to replace any part of the control system and any gas control which has been under water.

Due to high surface temperatures, keep children, clothing and furniture away.

Keep burner and control compartment clean. See installation and operating instructions accompanying the appliance.

FOR YOUR SAFETY: Do not store or use gasoline or other flammable vapors and liquids in the vicinity of this or any other appliance.

LIGHTING INSTRUCTIONS

1. STOP! Read the safety instruction label.
2. Turn the gas control manual valve to the full "OFF" position.
3. Wait five minutes to clear out any gas. If you smell gas, STOP! Follow "B" on the safety information label. If you don't smell gas, go to next step.
4. Place a burning match on the surface of the burning embers. Do not hold match in hand.
5. Turn gas control manual valve to the full "ON" position.
6. If appliance will not operate, follow the instructions "TO TURN OFF GAS TO APPLIANCE" and call your service technician or gas supplier.

TO TURN OFF GAS APPLIANCE

1. Turn gas control manual valve to full "OFF" position.

33321

F. GLASS DOORS

If your fireplace is equipped with a glass door, the glass doors should be in the full open position when the appliance is operating. Operating the fireplace with the glass doors closed will block the radiant heat output of the fireplace and may cause incomplete combustion of the natural gas fuel.

IMPORTANT!

Always ensure that the wire fireplace screen is closed when the fireplace is operating.

G. CLEANING

Your gas logs require little care. Keep the burner assembly, logs and burner area surrounding the logs clean by vacuuming or brushing with a dry paint brush at least twice a year.

CAUTION:

The logs can get very hot. Handle only when they are cool.

- Always turn off the gas to the appliance before cleaning. For relighting, refer to lighting instructions located on page 8 of these instructions.
- Always keep the appliance clear and free from combustible materials, gasoline, and other flammable vapors and liquids.

CAUTION:

After burning, the log becomes fragile, so take care in handling.

- Never obstruct the flow of combustion and ventilation air. Keep the front of the appliance clear of all obstacles and materials.
- Leave clearance of at least 36" from the front of the fireplace.
- The air shutter should not be blocked.

H. INSPECTING THE VENTING SYSTEM

The fireplace venting system is designed and constructed to develop a positive flow adequate to remove flue gases to the outside atmosphere. See vented fireplace installation instructions.

1. A spillage test must be made before the installed appliance is left with the consumer

- a. Close all doors and windows in the home.
- b. Light the log set.
- c. After three minutes, test with a smoke match, smoke candle, stick incense or cigarette 1" below the top of the opening (lintel) moving across the full width. See Figure 12. If spillage (smoke drawn into the room) occurs, it will most likely be near the top, outside corners.

2. Possible Cures

- a. The damper needs to be opened further.
- b. The fireplace opening needs to be reduced by adding a drop panel across the top under the lintel.



Figure 12 - Checking for Spillage

- c. The air supply from outdoors needs to be increased. Open the outside air kit if the fireplace is so equipped, or crack open a door or window.
- d. If necessary, seek expert advice. Do not operate this appliance.

3. Cleaning

Periodic examination and cleaning of the venting system of the fireplace should be done before initial use and at least annually by a qualified agency.

I. IMPORTANT SAFEGUARDS

1. Other Fuels

- a. Although your gas log set is very realistic in appearance, it is not a real woodburning fire and must not be used for burning any fuel other than natural gas.
- b. To avoid irreparable damage to the appliance and/or personal injury, wood, matches, paper, garbage or any other material must not be placed or thrown on top of the logs.

2. Appliance Safety

- To avoid personal injury, do not touch hot surfaces when the appliance is operating.
- Always ensure that the fireplace screen is closed when the appliance is operating.
- Close supervision is necessary when the appliance is being used near children.

J. SERVICING

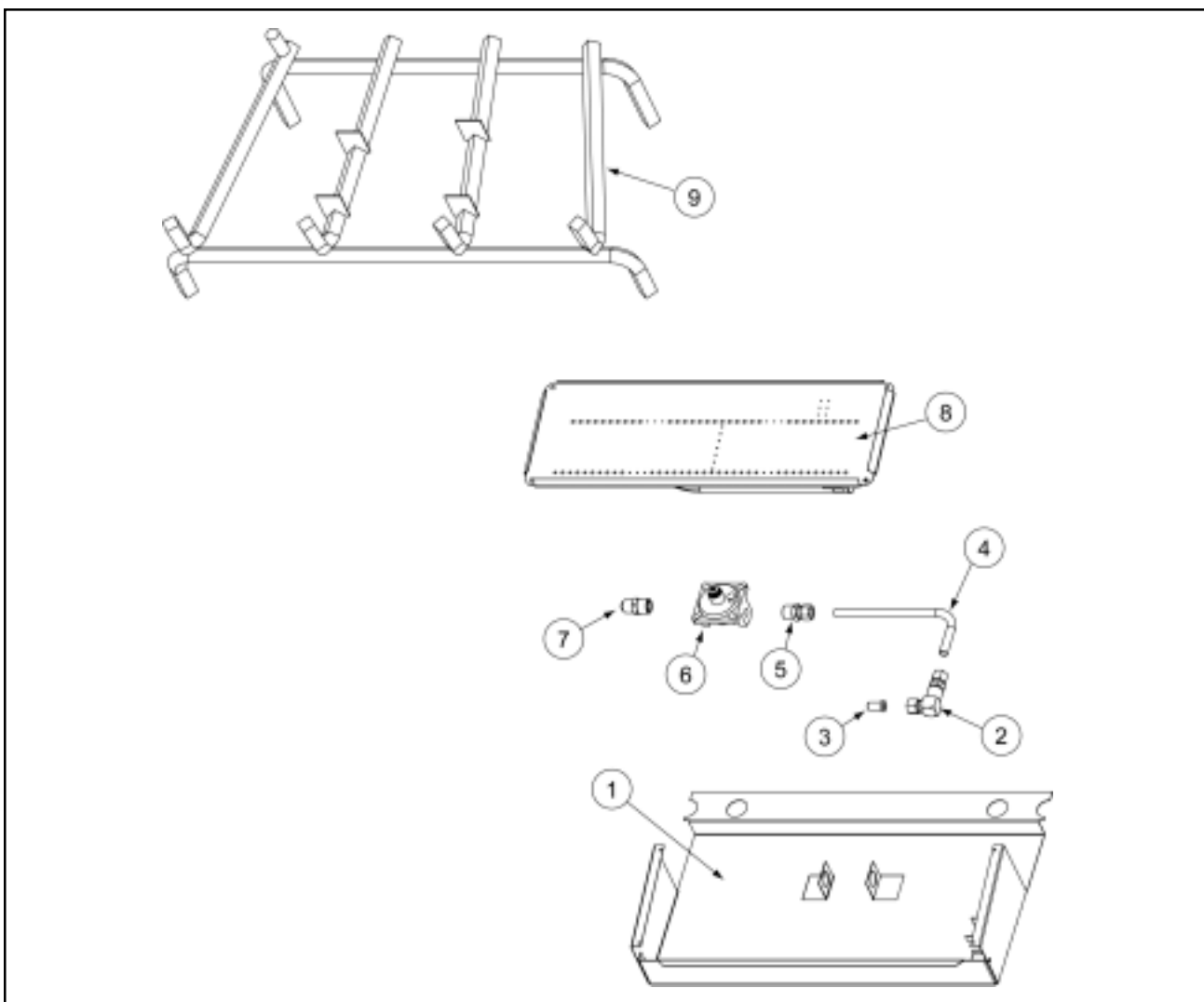
- Repair and replacement work should be done by a qualified service technician.
- Always shut off the gas supply and make sure the appliance is cool before beginning any service operation.
- Always check for gas leaks after servicing.
- Always check for proper venting.

K. OWNER REGISTRATION/ WARRANTY

Please complete and return your owner registration card to ensure proper warranty coverage. If you wish to communicate with the factory, write to Heatilator Technical Services, Hearth & Home Technologies Inc., 1915 W. Saunders Street, Mt. Pleasant, Iowa 52641.

L. REPLACEMENT PARTS

Parts lists with exploded views follow. Always include correct name, part number and model number of the appliance when ordering replacement parts. Contact your local dealer to order parts.



Manual Light Series Gas Logs

REPLACEMENT PARTS (CONTINUED)

Item	Description	36"	42"	Item	Description	36"	42"
1	Bottom Pan	34029	34029	13*	Top Log	33349	33353
2	Bulkhead	26457	26457	14*	Rear Log Support Assembly	33339	33340
3	Orifice (natural)	18740	18741	15*	Brass Connector	14325	14325
4	Gas Tube	33303	33303	16*	Damper Stop Assembly	14354	14354
5	Male Connector, Brass-Tube	13425	13425	17*	10" Flex Gas Line	15696	15696
6	Regulator	29904	29904	18*	Wool, Rock, Vermiculite, Fire98	33365	33365
7	Male Connector Brass-Flex	17069	17069	19*	Mineral Wool	14333B	14333B
8	Burner Assembly	33317	33318	20*	Vermiculite	28746	28746
9	Grate Assembly	33328	33329	21*	Lava Rock	28911	28911
10*	Front Log	33346	33350	22*	Fire Glow	FIRE98	FIRE98
11*	Middle Log	33347	33351	23*	Instructional Label - English	33321	33321
12*	Back Log	34626	33352	24*	Instructional Label - French	33322	33322

* These parts are not shown.

M. TROUBLESHOOTING

With proper installation and maintenance, your new decorative gas appliance should provide years of trouble-free service. If you do experience a problem, refer to the troubleshooting guide below. This guide will assist you or a qualified service technician in the diagnosis of problems and the corrective action to be taken.

Symptoms	Possible Causes	Corrective Action
1. Match will not light main burner; no gas to main burner.	A. Main gas shutoff valve closed.	1. Make sure that the shutoff valve located on the incoming gas line is open.
	B. Air in the gas line.	1. Bleed air from the gas line; wait five minutes and attempt to relight main burner.
	C. No gas supply to the appliance.	1. Check the plumbing to ensure the appliance has been hooked up to the gas supply line.
	D. A blockage is preventing gas flow.	1. Inspect the burner orifice for obstruction. Call a qualified service technician.



HEATILATOR DECORATIVE GAS LOG LIMITED WARRANTY

Hearth & Home Technologies Inc. (HHT) extends the following warranty for Heatilator® decorative gas log sets as described herein, while it is in its location or original installation. Dealers and employees of **HHT** have no authority to make any warranty or authorize any remedies in addition to or inconsistent with the terms of this Program. This warranty gives you specific legal rights. You may also have other rights which vary from state to state.

LIMITED WARRANTY. This Heatilator decorative gas log set is comprised of a gas burner assembly with safety pilot valve and ceramic fiber logs that are manufactured by **HHT**. This Limited Warranty does not cover any part of the woodburning fireplace system in which this decorative gas appliance must be installed. This Heatilator decorative gas log set is warranted to be free of defects in material and workmanship for a period of five (5) years from the date of installation. This Limited Warranty extends only to decorative gas log sets installed in the United States or Canada.

EXCLUSIONS AND QUALIFICATIONS. This Limited Warranty is subject to the following exclusions and qualifications: (1) This Limited Warranty does not apply to, and **HHT** assumes no responsibility for, any damages that result due to the installation or operation of this decorative gas log set not in accordance with both the installation instructions and operating instructions furnished. (2) The decorative gas log set must be subjected to normal use as explained in the operating instructions and the listing agency identification label attached to the burner pan assembly. This decorative gas log set is only intended to burn the fuel specified on the listing agency identification label. Use of any other fuel other than specified on the listing agency identification label can create a life threatening situation and will void this limited warranty. (3) This Limited Warranty applies only if the decorative gas log system has been installed in a vented fireplace that is suitable for burning wood. Adequate ventilation must be provided to allow proper drafting of the fireplace chimney system. **HHT** assumes no responsibility for improper performance of the decorative gas log set caused by inadequate draft due to environmental conditions (e.g. wind currents, downdrafts), tight-sealing construction of the structure, or mechanical devices (e.g. air handling devices that include forced air furnaces and air conditioning units, exhaust fans and ventilating devices), any and all of which may cause a negative pressure within the structure where the decorative gas log set is installed. (4) This Limited Warranty applies only to the components of the Appliance manufactured by **HHT**. **HHT** expressly excludes from this Limited Warranty any liability hereunder for defects or damage caused by the installation or use of any parts, devices or components that are not manufactured by **HHT**. (5) Labor costs to be paid by **HHT** pursuant to this Limited Warranty must be approved in advance of the performance of the work by **HHT** and must not exceed the retail price of the replacement part. (6) This Limited Warranty will be voided if the decorative gas log set is at any time removed or has been removed from the location in which it was originally installed. (7) Since building code requirements vary greatly throughout the United States and Canada, users of this decorative gas log set should determine in advance whether there are any building code restrictions on the installation and use of this product. **HHT** makes no representation or warranty regarding building code compliance and shall not be responsible for compliance therewith.

THERE ARE NO IMPLIED WARRANTIES OF MERCHANTABILITY OR FITNESS FOR PARTICULAR PURPOSE LIMITATION OF LIABILITY. IT IS EXPRESSLY AGREED AND UNDERSTOOD THAT HHT'S OBLIGATION AND PURCHASERS EXCLUSIVE REMEDY UNDER THIS LIMITED WARRANTY, UNDER ANY OTHER WARRANTY, EXPRESSED OR IMPLIED (INCLUDING MERCHANTABILITY AND FITNESS FOR PARTICULAR PURPOSE), OR OTHERWISE, SHALL BE LIMITED TO THE REPLACEMENT OR REPAIR OF ONLY HEATILATOR BRAND COMPONENTS AND OPTIONAL COMPONENTS AS SPECIFIED ABOVE. THE DURATION OF ANY IMPLIED WARRANTY INCLUDING MERCHANTABILITY AND FITNESS FOR PARTICULAR PURPOSE APPLICABLE TO THIS HEATILATOR FIREPLACE APPLIANCE IS LIMITED TO THE DURATION OF THE FOREGOING WARRANTY. SOME STATES DO NOT ALLOW LIMITATIONS ON HOW LONG AN IMPLIED WARRANTY LASTS SO THE ABOVE WARRANTY MAY NOT APPLY TO YOU. IN NO EVENT SHALL HHT BE RESPONSIBLE FOR ANY INCIDENTAL OR CONSEQUENTIAL DAMAGES CAUSED BY DEFECTS IN THE HEATILATOR DECORATIVE GAS LOG SET, WHETHER SUCH DAMAGE OCCURS OR IS DISCOVERED BEFORE OR AFTER REPLACEMENT OR REPAIR, AND WHETHER SUCH DAMAGE IS CAUSED BY HHT NEGLIGENCE. SOME STATES DO NOT ALLOW THE EXCLUSION OR LIMITATION OF INCIDENTAL OR CONSEQUENTIAL DAMAGES, SO THE ABOVE LIMITATION OR EXCLUSION MAY NOT APPLY TO YOU.

HOW TO OBTAIN SERVICE. To obtain service under this Program, you must:

1. Send written notice of the claimed condition to Heatilator Technical Service Department, Hearth & Home Technologies Inc., 1915 West Saunders Street, Mt. Pleasant, Iowa 52641.
2. Provide proof of purchase to **HHT**.
3. Provide **HHT** reasonable opportunity to investigate the claim, including reasonable opportunity to inspect the Fireplace prior to any repair or replacement work and before the Fireplace has been removed from the place of original installation.
4. Obtain **HHT's** consent to any warranty work before the work is done.

ADDITIONAL INFORMATION. If you would like information on current HEATILATOR products or want to locate a dealer in your area, simply call 800-843-2848.

2003 Hearth & Home Technologies Inc., a Division of HON Industries