

FB-RESET Kit

Models: Escape-I30FB, Escape-I35FB, QFI30FB, QFI35FB

- Installation Instructions -



Leave this manual with party responsible for use and operation.

CAUTION! Risk of Cuts or Abrasions. Wear protective gloves and safety glasses during installation.

KIT COMPONENTS

- (1) Module Jumper Wire
- (1) Module Reset Wire Assembly
- (1) Rocker Switch
- (1) Battery tray/switch
- (1) Velcro Piece

Installation

1. Remove back access panel by removing the 5 screws as shown in Figure 1.
2. Unplug the 6V adapter from the module. See Figure 2.

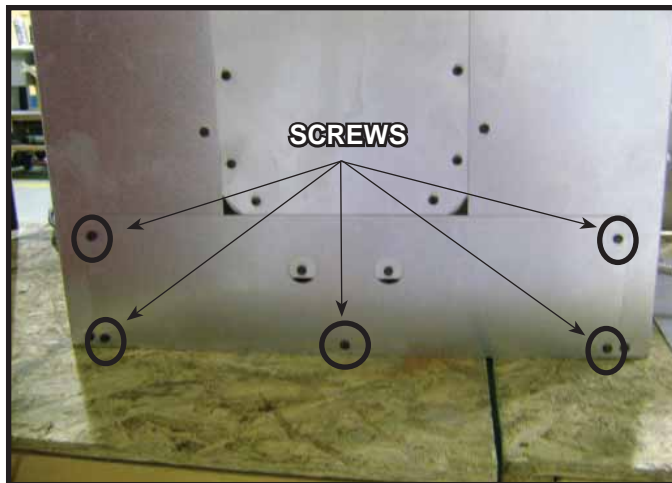


Figure 1. Remove Back Access Panel

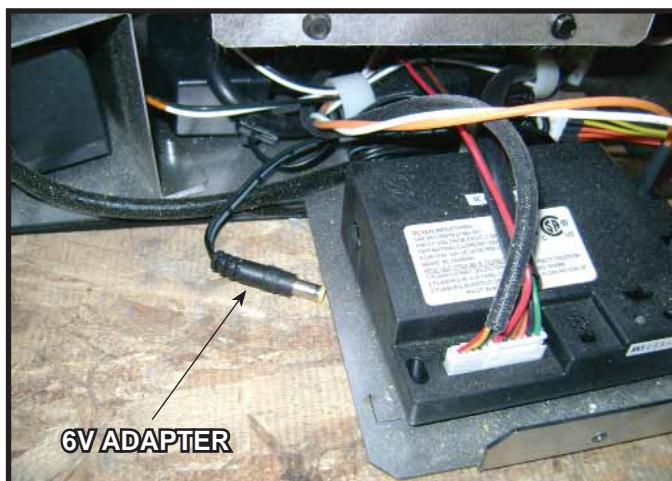


Figure 2. Unplug 6V Adapter from Module

3. Plug the new jumper assembly into the 6V adapter and the module as shown in Figure 3.
4. The battery tray is located in the lower left front of the appliance as shown in Figure 4. A notch on the right side of the tray engages the tray with the appliance. See Figure 5 for location of notch. To remove the tray, rotate the left side of the tray outward and pull to the left to disengage the notch.
5. Remove the battery pack from the tray and discard the metal battery tray.



Figure 3. Plug in Jumper Wire Assembly

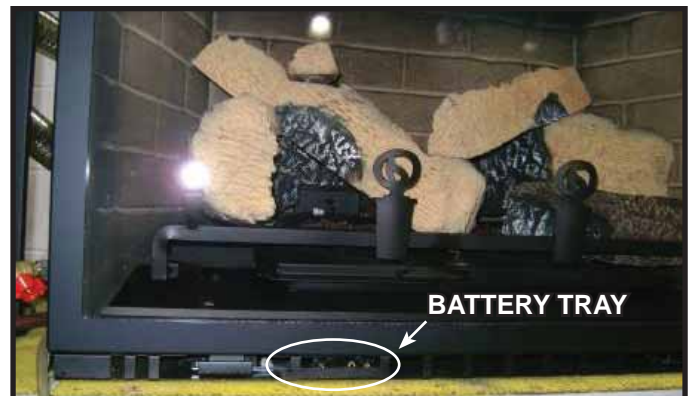


Figure 4. Battery Tray Location



Figure 5. Reset Switch and Notch Location

6. Place the battery pack on the new supplied battery tray with the Velcro supplied in the kit.
7. Feed the module reset wire assembly through the front of the appliance to the back by the module.
8. Reinstall the new battery tray.
9. Connect the 24 inch wire assembly to the new module wire assembly. See Figure 7.
10. Refer to shaded area on Figure 8 for completed wiring diagram.
11. Reattach the back panel by installing the five screws.

Operation Instructions

This module may lock-out under certain conditions. When this occurs, the appliance will not ignite or respond to commands. The module will go into lock-out mode by emitting three audible beeps, then continuously display a RED/GREEN error code at its status indicator LED.

- Check battery tray. Remove batteries if installed. Batteries should only be installed for power outages. See appliance installation manual for more information.
- Locate the module reset switch. (See Figure 6).
- Set the module reset switch to the RESET position.
- Wait five (5) minutes to allow possible accumulated gas to clear.
- Set the module reset switch to ON.
- Start the appliance.

WARNING! Risk of Explosion! DO NOT press the module reset switch more than one time. Gas may accumulate in firebox. Call a qualified service technician.

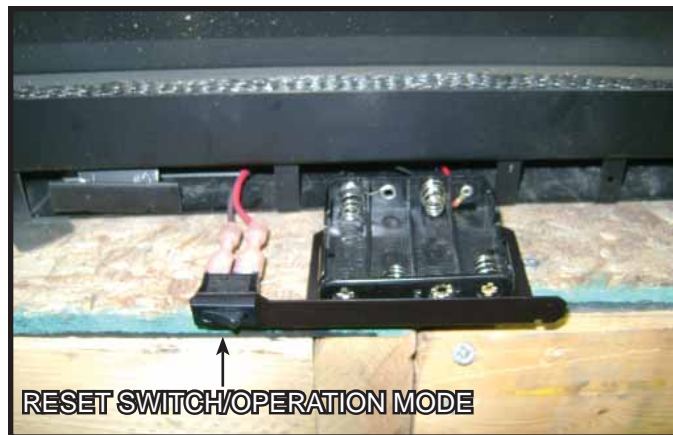


Figure 6.

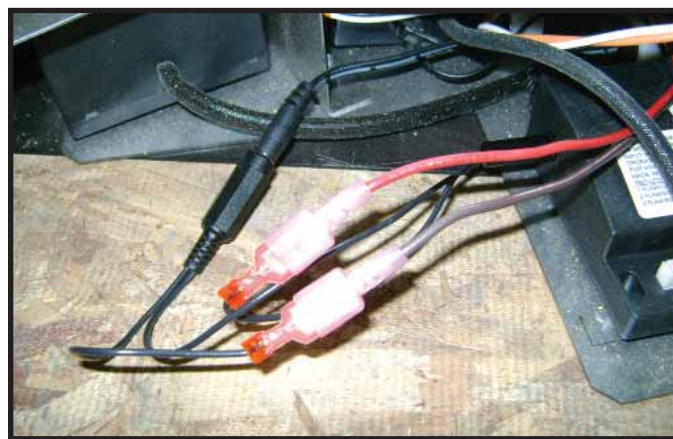


Figure 7.

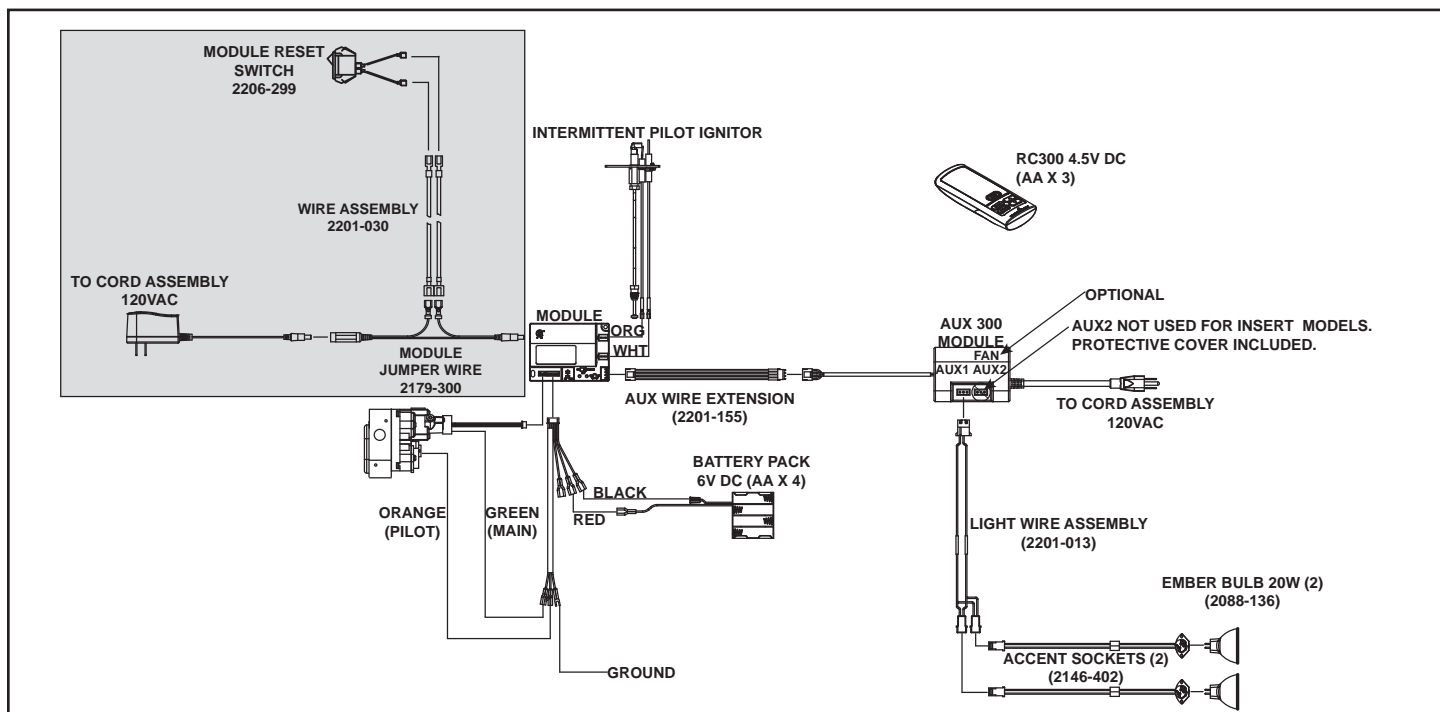


Figure 8. IPI Wiring Diagram

Please contact your Hearth & Home Technologies dealer with any questions or concerns.
For the location of your nearest Hearth & Home Technologies dealer, please visit www.fireside.com

Hearth & Home Technologies Inc.
7571 215th Street West, Lakeville, MN 55044
www.fireside.com