

G520CLE G520CLLE G520CRE G520CRLE INSTALLATION & OPERATING INSTRUCTIONS

I. LISTINGS AND CODE APPROVALS

These vented decorative gas appliances with electronic direct spark ignition have been tested in accordance with National Safety Standards, and have been LISTED by Underwriters Laboratories Inc. for installation and operation as described in these Installation & Operating Instructions. Installations must be done by qualified installers only.

Check with your local building code agency before you begin installation to ensure compliance with local codes, including the need for "permits" and follow-up inspections. If any problems are encountered regarding code approvals, or if you wish clarification of any of the instructions contained here, contact your local distributor/dealer, or Customer Relations Department, Heatilator Inc., 1915 W. Saunders Street, Mt. Pleasant, Iowa 52641. HEATILATOR® is a registered trademark of Heatilator Inc., a HON INDUSTRIES company.

We strongly recommend that you DO NOT install B-Vent Gas Appliances in strong negative air locations, such as a basement or a public facility. Living rooms with cathedral ceilings could be susceptible to a negative air situation, but such installations can be overcome through raising the termination, depending on specific installations. This fireplace uses room air for normal operation and could have problems establishing a positive draft in negative air locations. In lieu, we recommend a direct vent appliance.

FOR YOUR SAFETY

WHAT TO DO IF YOU SMELL GAS:

- DO NOT TRY TO LIGHT ANY APPLIANCE.
- DO NOT TOUCH ANY ELECTRICAL SWITCH; DO NOT USE ANY PHONE IN YOUR BUILDING.
- IMMEDIATELY CALL YOUR GAS SUPPLIER FROM A NEIGHBOR'S PHONE. FOLLOW THE GAS SUPPLIER'S INSTRUCTIONS.
- IF YOU CANNOT REACH YOUR GAS SUPPLIER, CALL THE FIRE DEPARTMENT.

FOR YOUR SAFETY

DO NOT STORE OR USE
GASOLINE OR OTHER
FLAMMABLE VAPORS AND
LIQUIDS IN THE VICINITY OF
THIS OR ANY OTHER
APPLIANCE.

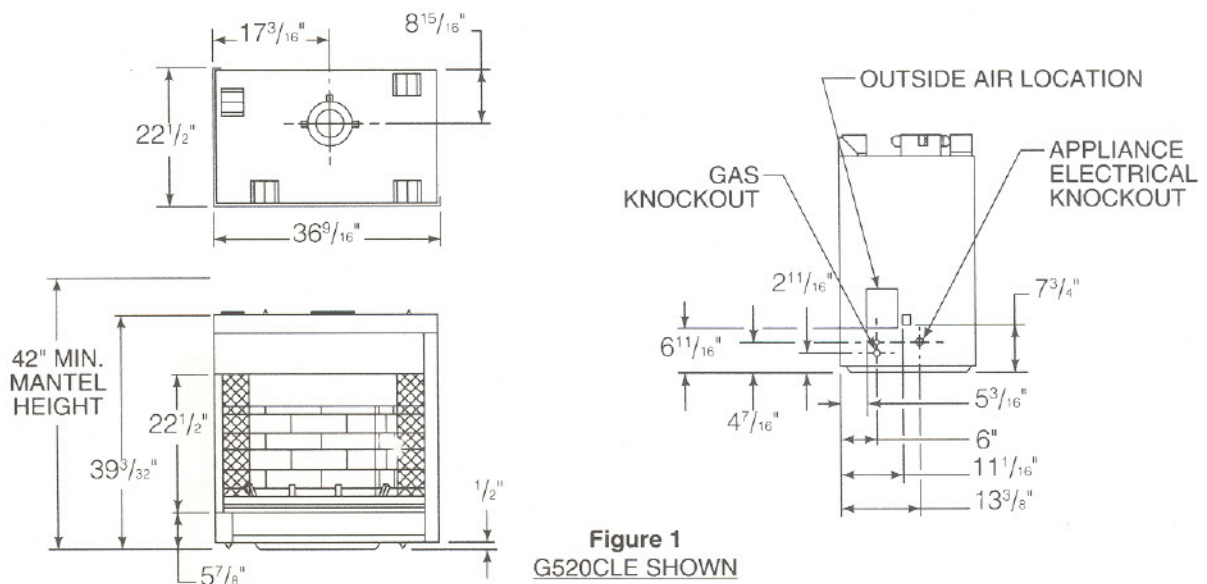


Figure 1
G520CLE SHOWN

The table below shows only those components which may be safely used with these decorative gas appliances.

Catalog Number	Description
G520CLE G520CRE	6" Up Vent Natural Gas Decorative Appliance (Non-Circulator)
G520CLLE G520CRLE	6" Up Vent Propane Gas Decorative Appliance (Non-Circulator)
GC36A	Glass Doors - Antique Brass
GC36B	Glass Doors - Polished Brass
AK14	Air Kit - Outside Air
ID4	Insulated Duct/Outside Air
UD4	Uninsulated Duct/Outside Air
RC5	Remote Control Kit

II. GENERAL INFORMATION

This installation must conform with local codes or, in the absence of local codes, with the National Fuel Gas Code ANSI Z223.1-latest edition or, in Canada, current CAN/CGA-B149.1 and B149.2 installation codes.

INSTALLATION AND REPAIR SHOULD BE DONE BY A QUALIFIED SERVICE PERSON. THE APPLIANCE SHOULD BE INSPECTED BEFORE USE AND AT LEAST ANNUALLY BY A QUALIFIED SERVICE PERSON. MORE FREQUENT CLEANING MAY BE REQUIRED DUE TO EXCESSIVE LINT FROM CARPETING, BEDDING MATERIAL, ETC. IT IS IMPERATIVE THAT CONTROL COMPARTMENTS, BURNERS AND CIRCULATING AIR PASSAGEWAYS OF THE APPLIANCE BE KEPT CLEAN.

Provide adequate clearances around the air openings into the combustion chamber and adequate accessibility clearances for servicing and proper operation.

Minimum clearances to combustibles are: Top of appliance 0", Floor 0", Back 1/2", Sides 1/2", Ceiling 30".

The appliance must be installed on a flat, solid, continuous surface (i.e. wood, metal, concrete).

Provide for adequate combustion and ventilation air.

For Natural Gas, the minimum inlet gas supply pressure is 4.0 inches water column, and the maximum inlet gas pressure is 11.0 inches water column, for the purpose of input adjustment. Input rate is 28,000 BTU/HR. For Propane Gas, the water column pressure must be at 11.0 inches minimum to 14.0 inches maximum.

A 1/8" NPT plugged tapping is provided on the gas control valve, near the outlet to the Main Burner immediately upstream of the gas supply connection to the appliance, accessible for a test gage connection.

For high elevation, refer to ANSI Z223.1-latest edition, Appendix F, for resizing orifice. A derated orifice is supplied with your appliance.

DUE TO HIGH TEMPERATURES, THE APPLIANCE SHOULD BE LOCATED OUT OF TRAFFIC AND AWAY FROM FURNITURE AND DRAPERIES.

III. GAS APPLIANCE LOCATIONS, SPACE AND CONSTRUCTION REQUIREMENTS

These gas appliances must not be connected to a chimney flue serving a separate solid fuel burning appliance.

The G520CLE(CLLE) or G520CRE(CRLE) gas appliances can be installed in a wide variety of ways and will fit nearly any room layout. The appliance may be installed at a height level with the floor, or it can be raised up from the floor to enhance its visual impact. Figure 2 illustrates a variety of ways the appliance may be located in a room.

Proper clearances to combustible sidewalls, as illustrated in Figure 2, must be maintained.

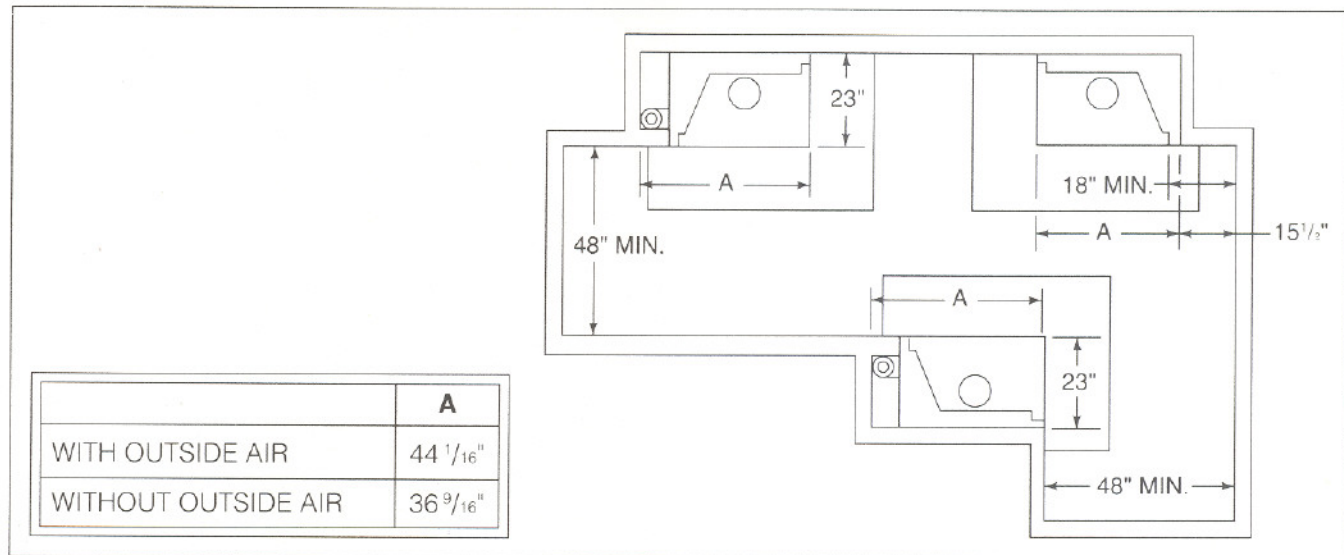


Figure 2

IV. STEP-BY-STEP INSTALLATION

☐ STEP 1

Install the gas line piping up to the right side of the appliance. For a gas line connection of 25' long, it is recommended to use 1/2" pipe, then reduce to 3/8" pipe at the appliance. A 3/8" NPT gas connection should be positioned 2 5/8" above the floor and 5 3/16" from the front of the appliance. A separate shut-off gas valve (not supplied) should always be installed. Plan ahead for easy access.

☐ STEP 2

Supply electrical wiring (110V) to the side of the appliance. Connect the wall switch in line to operate the appliance. The appliance must be electrically wired and grounded in accordance with local codes or, in the absence of local codes, with National Electric Code ANSI/NFPA 70-latest edition or, in Canada, the current CSA C22.1 Canadian Electrical Code.

☐ STEP 3

Slide the appliance into position.

☐ STEP 4

Secure the appliance to the wall using a minimum of (2) fasteners per side.

☐ STEP 5

Connect 6" listed type B-1 Vent to the vent collar of the appliance. Follow all B-1 Vent listings and requirements.

☐ STEP 6

Connect the gas line to the appliance valve inlet, using 3/8" pipe. Check for gas leaks with a soap and water solution. See Figure 3 for the location of gas valve. It is recommended to use a flexible gas connector to ease in installation. Run the 3/8" pipe approximately 3" into the appliance. Connect a 12" to 18" flexible connector to the pipe and valve. To ease in making connections, remove the logs, grate, access cover and valve cover assembly. Make all gas connections and wall switch connections. Follow the wiring diagram in Figure 4. Return all components to their correct position.

NOTE: During any pressure testing of the gas supply piping system that exceeds test pressures of 1/2 psig, this appliance and its individual shut-off valve must be disconnected from the piping system. If test pressures equal to or less than 1/2 psig are used in pressure testing the gas supply piping system, this appliance must be isolated from the piping system by closing its individual manual shut-off valve during the testing.

□ STEP 7

If optional outside air is used, install before finishing. Minimum length of air duct ID4 is 12 inches, with a maximum 8' vertical height.

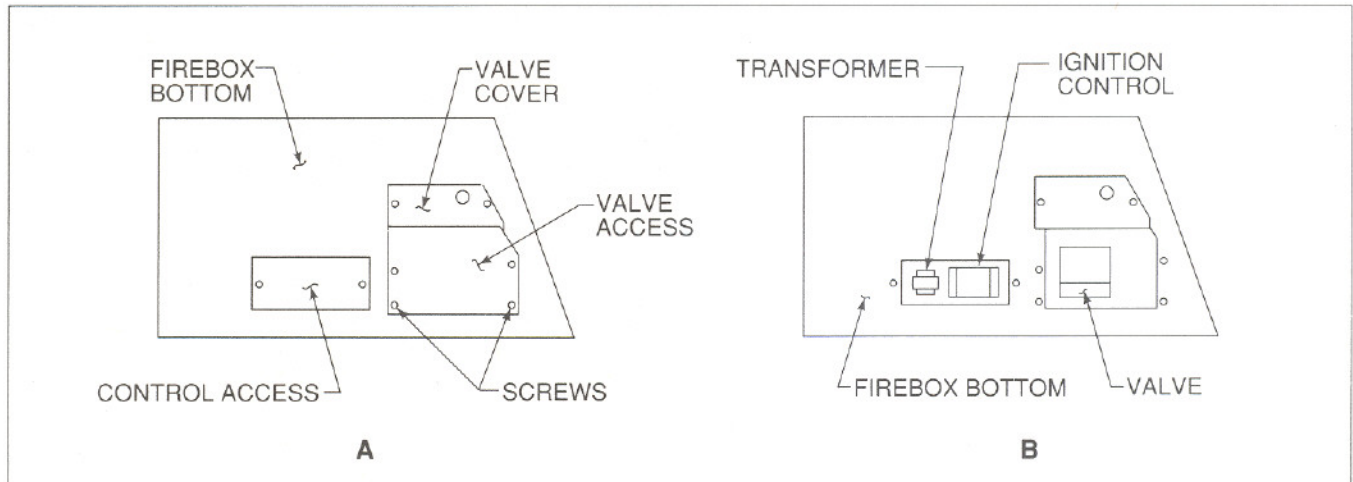


Figure 3

□ STEP 8

Finishing the Appliance. The wall switch hook-up should be installed in a convenient location. A wall switch is provided with the appliance. The connection must be made as shown in the wiring diagram, Figure 4. When finishing the face of the appliance, combustible material may be brought up to the sides of the appliance, but must never overlap onto the black metal. The black metal may be covered with non-combustible material only. **NOTE: You cannot cover any of the air slots in the appliance, as this may create a fire hazard.** If a mantel is to be used, a minimum of 42" from the base of the appliance must be maintained.

□ STEP 9

Place Lava Rock in position after putting the valve access in position. Pour Lava Rock on the floor of the appliance and spread evenly to cover base. Don't get any rock in burner. If you do, clean the burner with a vacuum.

□ STEP 10

Position logs as shown in the Replacement Parts section. The front and rear logs must be positioned against the inside of the burner supports to provide a 2 1/2" spacing between them.

V. OPERATING INSTRUCTIONS

LIGHTING PROCEDURE

Steps 1 - 4 are to be followed for initial start-up and seasonal start-up. Step 5 is sufficient for later starts in-season.

1. Turn the remote wall switch to the "Off" position.
2. Push gas control lever in and slide lever to the "Off" position.
3. Wait five minutes to allow gas, that may have accumulated in the main burner compartment, to escape.
4. Move gas control to the "On" position.
5. Turn remote wall switch to the "On" position. This will turn on the main burner.

SHUTDOWN PROCEDURE

1. To shut off the main burner, move the wall switch to the "Off" position.
2. To shut off the entire system, push gas control lever in and slide lever to the "Off" position.

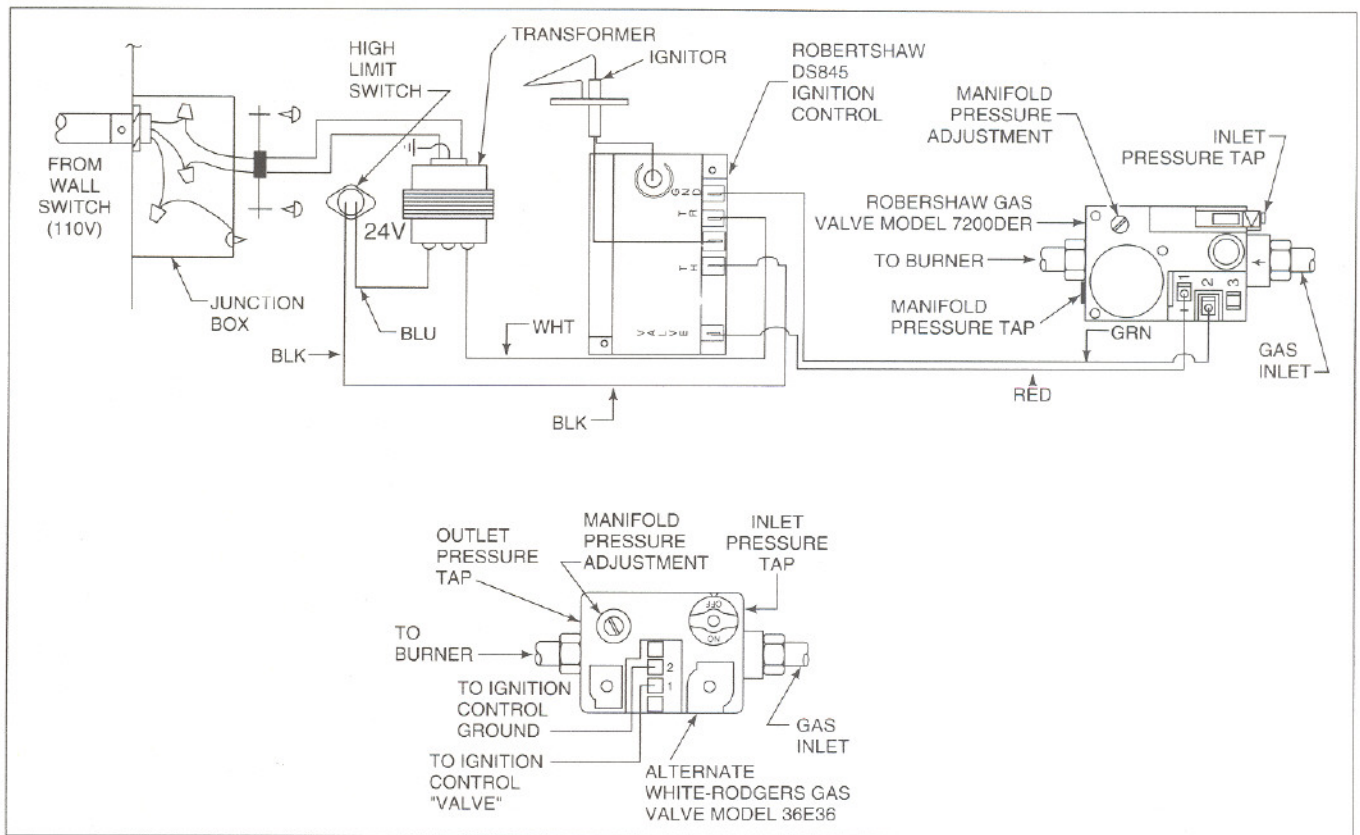


Figure 4

MAINTENANCE INSTRUCTIONS

Keep the burner and control compartment clean by brushing at least once a year. Always turn off the gas before cleaning.

Periodically visually check the flame of the pilot and burner, making sure the flames are steady; not lifting or floating. The flame color should be blue with yellow tips. The ignitor tips should be covered with flame. See Figure 5.

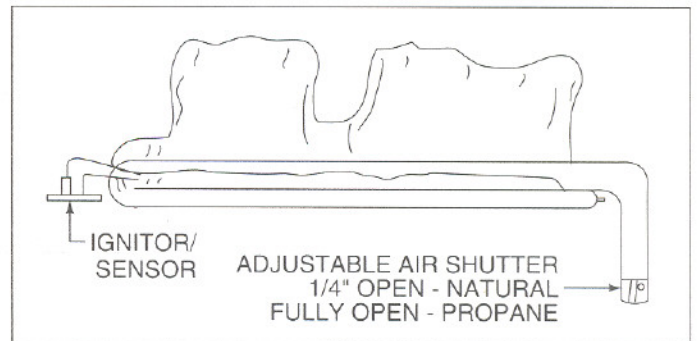


Figure 5

The appliance and venting system should be inspected before use, or at least annually, by a qualified field service person, to ensure that the flow of combustion and ventilation air is not obstructed.

Keep the area near the appliance clear and free from combustible materials, gasoline and other flammable vapors and liquids.

NOTE: When first operated, the appliance will release an odor for about an hour. This is caused by the curing of the paint and the burning off of any oils remaining from manufacturing.

WARNING

CHILDREN AND ADULTS SHOULD BE ALERTED TO THE HAZARDS OF HIGH SURFACE TEMPERATURE AND SHOULD STAY AWAY TO AVOID BURNS OR CLOTHING IGNITION. YOUNG CHILDREN SHOULD BE CAREFULLY SUPERVISED WHEN THEY ARE IN THE SAME ROOM AS THE APPLIANCE.

CAUTION

ANY SAFETY SCREEN OR GUARD REMOVED FOR SERVICING AN APPLIANCE MUST BE REPLACED PRIOR TO OPERATING THE APPLIANCE.

CLOTHING OR OTHER FLAMMABLE MATERIAL SHOULD NOT BE PLACED ON OR NEAR THE APPLIANCE.

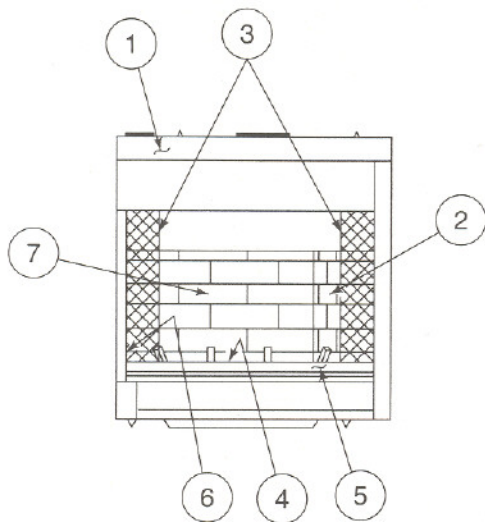
NOTE: If optional glass doors are used, each time the appliance is lit it may cause condensation and fog the glass. This condition will disappear in a few minutes.

Log Replacement. Logs can be lifted out of position. If for any reason one should need replacement, you must use the proper replacement log. The position of these logs must be as shown in the diagram under Replacement Parts. The front and rear logs must be positioned against the inside of the burner supports to provide a 2 1/2" spacing between them. The top logs must be in the position as shown. **NOTE: Improper positioning of logs may create carbon build-up and will alter the unit's performance.**

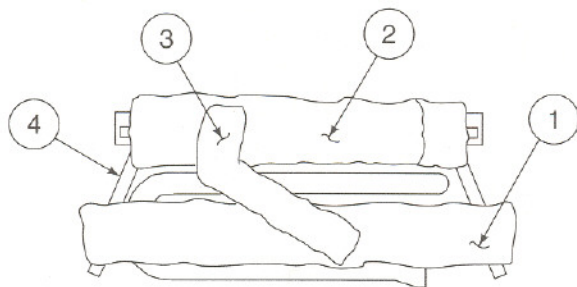
TROUBLE SHOOTING

<u>Problem</u>	<u>Cause</u>	<u>Corrective Action</u>
1. Spark ignitor will not light burner after repeated attempts.	A. Defective ignitor.	Check for loose connections on electrode and ignitor. Check for spark. If electrode connection is correct and no spark, replace ignitor.
	B. Misaligned electrode at pilot.	Spark should be extending approx. 1/8" to ground wire. Adjust gap to give proper spark. Remove hands from electrode before attempting.
2. Burner will not stay lit.	A. Defective flame sensor.	Check burner flame. See Figure 5. Adjust sensor if necessary. Be sure sensor is secured tight into bracket. Be sure wiring connections are tight throughout system, including high limit switch.
	B. No ground.	Check that wiring is grounded as shown in Figure 4.
3. With valve and wall switch in "ON" position, no gas to burner.	A. Wall switch defective.	Check power source (fuses). Check wall switch for proper connections. Check for 24 volt power off secondary on the transformer.
	B. Plugged burner orifice.	Check burner orifice; remove blockage.
	C. Gas valve(s) shut off.	Check all gas valves leading to appliance. Turn to the "ON" position.

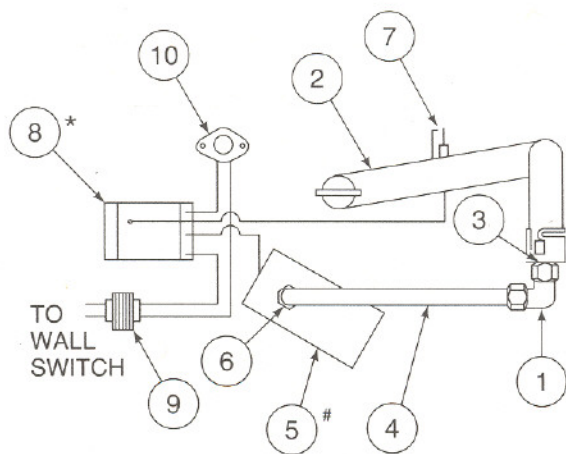
REPLACEMENT PARTS



ITEM	PART NO.	DESCRIPTION
1	12619	Top Front - G520CLE/LE
	12620	Top Front - G520CRE/LE
2	11821	Side Refractory
3	12332	Screen
4	14336	Lava Rock
5	14252	Front Ash Lip
6	12593	Side Ash Lip
7	12589	Back Refractory



ITEM	PART NO.	DESCRIPTION
1	14069	Front Log
2	13422	Back Log
3	14070	Top Log
4	15321	Grate - G520CRE/LE
	15322	Grate - G520CLE/LE



ITEM	PART NO.	DESCRIPTION
1	13908	Elbow
2	13858	Burner Assembly - G520CLE/LE
	15269	Burner Assembly - G520CRE/LE
3	13410	Orifice - Natural
	13445	Orifice - Propane
4	18617	Burner Tube
5 [#]	71515	Valve - Natural (White-Rodgers)
	71516	Valve - Natural (Robertshaw)
	71517	Valve - Propane (White-Rodgers)
	71518	Valve - Propane (Robertshaw)
6	13425	Male Connector
7	17003	Ignitor/Sensor
8 [*]	15695	Ignition Control (Channel Products)
		Ignition Control (Fenwal)
9	17836	Transformer Assembly
10	16957	Limit Switch

Valve identification must be made. They are marked White-Rodgers or Robertshaw.

* Ignition Control identification must be made. They are marked Channel Products or Fenwal.

Replacement parts are available from your distributor/dealer, or through Heatilator Inc., 1915 W. Saunders Street, Mt. Pleasant, Iowa 52641.

FOR YOUR SAFETY READ BEFORE LIGHTING

WARNING: If you do not follow these instructions exactly, a fire or explosion may result causing property damage, personal injury or loss of life.

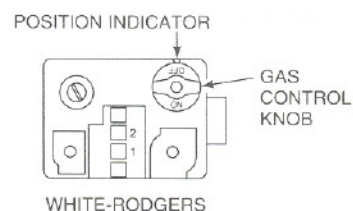
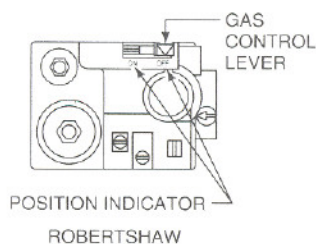
- A. This appliance does not have a pilot. It is equipped with an ignition device which automatically lights the burner. Do not try to light the burner by hand.
- B. BEFORE OPERATING smell all around the appliance area for gas. Be sure to smell next to the floor because some gas is heavier than air and will settle on the floor.

WHAT TO DO IF YOU SMELL GAS

- Do not try to light any appliance.
 - Do not touch any electric switch; do not use any phone in your building.
 - Immediately call your gas supplier from a neighbor's phone. Follow the supplier's instructions.
 - If you cannot reach your gas supplier, call the fire department.
- C. Use only your hand to push in and move the gas control lever, or rotate the gas control knob. Never use tools. If the lever will not push in or move by hand, don't try to repair it; call a qualified service technician. Force or attempted repair may result in a fire or explosion.
 - D. Do not use this appliance if any part has been under water. Immediately call a qualified service technician to inspect the appliance and to replace any part of the control system and any gas control which has been under water.

OPERATING INSTRUCTIONS

1. STOP! Read the safety information above on this label.
2. Turn wall switch to the "OFF" position.
3. Turn off all electric power to the appliance.
4. This appliance is equipped with an ignition device which automatically lights the burner. Do not try to light burner by hand.
- 5a. Push gas control lever in and move to the "OFF" position (Robertshaw).
- b. Rotate gas control knob to the "OFF" position (White-Rodgers).
6. Wait five (5) minutes to clear out any gas. If you then smell gas, STOP! Follow "B" in the safety information above on this label. If you don't smell gas, go to the next step.
7. Move gas control to the "ON" position.
8. Replace control access panel.
9. To turn on burner, turn on all electric power to this appliance.
10. If the appliance will not operate, follow the Instructions "TO TURN OFF GAS TO APPLIANCE" and call your service technician or gas supplier.



TO TURN OFF GAS TO APPLIANCE

1. Turn off the wall switch.
2. Turn off all electric power to the appliance if service is to be performed.
3. Push gas control lever in and move to the "OFF" position. Do not force.
4. Replace control access panel.

Due to high surface temperatures, keep children, clothing and furniture away.

Keep burner and control compartment clean. See Installation and Operating Instructions accompanying the appliance.