

heatilator®

AMERICA'S LEADING FIREPLACE SYSTEMS

installation directions

MARK 123
FIREPLACE

MODEL 3028
MODEL 3034
MODEL 3034 U.S. PATENT 3,605,719

INDEX

ACCESSORIES 2, 3
PLANNING 4
FRAMING 5

3034 MODEL 6, 7
"STEP-BY-STEP" 8, 9
TYPICAL INSTALLATIONS 10

OFFSET/ELBOW/CHIMNEY 11, 12
GAS DEVICES 13
TERMINAL CAP, CHASE, CHASE TOP 14, 15

GENERAL INFORMATION

BUILDING AUTHORITIES, REFER TO THE FOLLOWING: UNDERWRITERS' LABORATORIES, INC. NO. MH5850 (LOOK FOR THE LABEL), BUILDING OFFICIALS AND CODE ADMINISTRATORS INTERNATIONAL, INC. NO. 69-10, INTERNATIONAL CONFERENCE OF BUILDING OFFICIALS NO. 1141)

These directions are based on the NATIONAL BUILDING CODE recommended by the AMERICAN INSURANCE ASSOCIATION.

CAUTION: Read the directions completely (including directions packed with component parts) BEFORE beginning installation.

WARNING: A safe installation of this fireplace required use of authorized (listed) components ONLY, and careful attention to details and workmanship when installing each component. **INSTALLER NOTE:** A fireplace rendered unsafe through use of "unauthorized items", insufficient clearances to combustible construction, or poor practices of any description can cause a building fire. FOLLOW DIRECTIONS DILIGENTLY TO AVOID CREATION OF HAZARDOUS INSTALLATION.

1. The Heatilator Mark 123-28F Fireplaces

28" FRONT-OPEN (28F") CAT. NO. 3028

and

28" FRONT-OPEN (28F") CAT. NO. 3034

are alike except for screen design. The 3028 has a 28" width screen (2-piece) located $\frac{3}{4}$ " inside the face of the fireplace; the 3034 has a 38" width screen (2-piece) plus screen hood and side trim parts, all located outside the face of the fireplace. (Installation procedures and framing methods differ somewhat for these two models. The installer should be certain to follow the appropriate diagrams and directions herein.)

2. Fireplace may be installed directly on a combustible floor and the fireplace sides and rear may be in contact with combustible walls or wall framing members.

WARNING: PROVIDE COMPLETE FULL-AREA SUPPORT BENEATH FIREPLACE TO BEAR WEIGHT OF UNIT AND ITS CHIMNEY—DO NOT SUPPORT FIREPLACE AT A FEW POINTS ONLY WITH BLOCKS OR FLOOR JOISTS.

(To raise fireplace above floor, construct a sturdy platform with full wood covering.)

3. The Heatilator Mark 123-28F Fireplace may be installed anywhere along walls or in corners.

Exception: A minimum clearance of 3' must be maintained from the fireplace opening to any combustible wall which projects at 90° to the fireplace opening. The fireplace may, however, be installed 45° across a room corner.

4. The fireplace can be installed ONLY with the specified chimney and roof termination, (Single or Double Housings, or Contemporary Cap or Terminal Cap) and cannot be connected to any other flue.

5. The STARTER SECTION, which is shipped with the fireplace, must be installed vertically on top of the fireplace, or, if 15° or 30° fireplace offsets are employed to bend the chimney within the fireplace room, the STARTER SECTION may be inclined on top of the offset, and may incline only to left, right, rear, or front.

6. The STARTER SECTION must be installed with not less than 2" clearance to combustibles.

7. A FIRESTOP-SPACER must be used for each floor or ceiling penetrated. Use Cat. No. 719 for vertical chimney; use Cat. No. 3716 for a chimney inclined through the ceiling at 15°; use Cat. No. 3731 for a chimney inclined through ceiling at 30°.

8. Heatilator Mark 123 CHIMNEY SECTIONS (7") are used above the Starter Section. Use 6" height, Cat. No. 706; 2' height, Cat. No. 712; or 3' height, Cat. 713, as required.

9. For Single or Double Housings, CHIMNEY SECTIONS MUST REACH A MINIMUM OF 6" ABOVE THE HIGH SIDE of the roof opening AND meet the Slip Section with a minimum of 2" engagement. CHIMNEY SECTIONS must be installed with not less than 2" clearance to enclosure walls, ceilings,

joists, floors and roof structure. (CHIMNEY SECTIONS are 11 $\frac{1}{2}$ " O.D. and require ceiling and floor openings 15 $\frac{1}{2}$ " x 15 $\frac{1}{2}$ ".)

10. Overall height of fireplace and chimney to be NOT LESS THAN 16', and NOT MORE THAN 59'.

EXCEPTIONS: (a) Total overall height between 12' and 16' permitted when Special Low height Radiation Shield, Cat. No. 3712, is installed in roof opening. See detail on Page 12 for installation methods.

(b) Height of chimney supported by Return portion of OFFSET, Cat. No. 3715 or 3730, may be up to 60' maximum.)

11. The HOUSING (or the CONTEMPORARY CAP) should extend at least 3' above the highest point where it passes through the roof and at least 2' higher than any portion of a building within 10'. Roof openings for HOUSINGS are: Single, 18" x 18"; Double, 18" x 38". Roof opening for CONTEMPORARY CAP is 15 $\frac{1}{2}$ " x 15 $\frac{1}{2}$ ". (All roof openings are measured on horizontal.) See Installation Directions which accompany Housing or Contemporary Cap.

USE OF TERMINAL CAP ON LOCALLY-CONSTRUCTED CHASE: Study complete details, page 14. This new technique of enclosing fireplace and its chimney, or chimney only, requires merely competent planning and construction to be successful. HEIGHT OF CHASE, WITH CAP, IS IMPORTANT AND IS EXPLAINED IN DETAIL.

12. The floor (or surface of platform, if fireplace is elevated) in front of the fireplace is termed the HEARTH EXTENSION. Hearth Extension must extend at least 16" in front of, and at least 8" beyond each side of the fireplace opening.

Hearth Extension must be not less than $\frac{3}{4}$ " thick approved non-combustible material. (Factory-built steel Hearth Extensions are detailed on page 3; these may be covered with non-combustible material or left uncovered.)

WARNING: Never allow unprotected wood, carpet, or any other combustible materials to exist in hearth extension prescribed area.

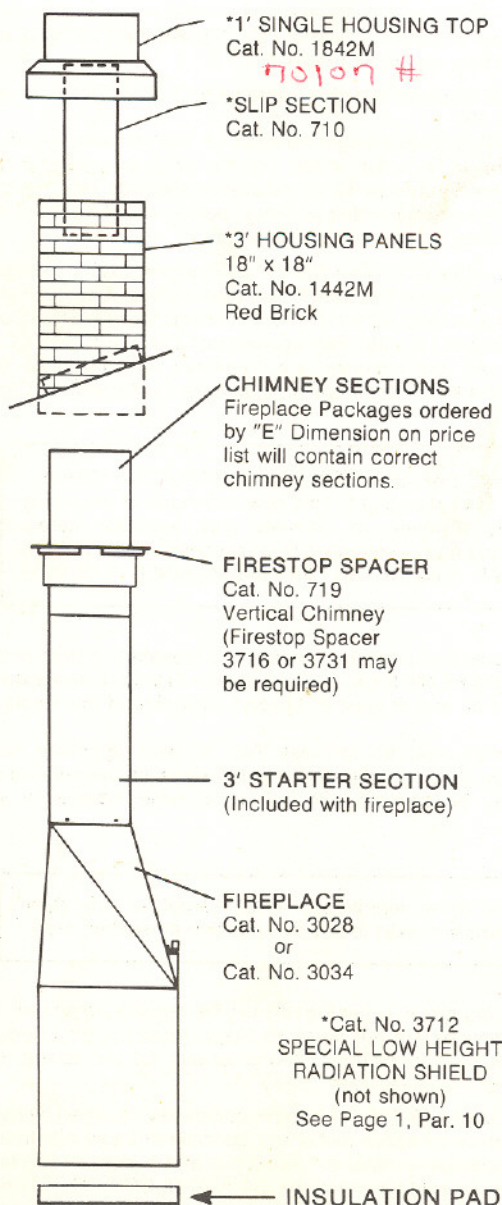
13. If desired, a gas log lighter (or gas log set) may be installed in the Mark 123 Fireplace. (Such devices are not made by Vega Industries, Inc.) Special attention should be given to information supplied with the gas device. See Installation Directions "Gas Devices", page 13.

14. The Heatilator Mark 123-28F Fireplace is completely insulated by high-temperature insulation, reflective metal, and special refractory hearth and firebox liners. In addition, cooling air enters top and bottom of fireplace opening and maintains safe temperatures. DO NOT BLOCK OR ALTER IN ANY WAY THESE SPECIAL AIR ENTRIES, which are clearly detailed in the illustration.

DO NOT INSTALL GLASS DOORS UNLESS MANUFACTURED BY VEGA INDUSTRIES, INC. AND THEN ONLY IF DESIGNATED AS APPROPRIATE FOR YOUR PARTICULAR MODEL FIREPLACE.

INSTALLATION COMPONENTS

The illustration below shows components included in the Fireplace Package, while at right are shown all optional accessories which might be required or preferred to complete your installation. Asterisked (*) items may be substituted. An item shown UNDERLINED is required for every installation.



Cat. No. 706
6" Chimney Section

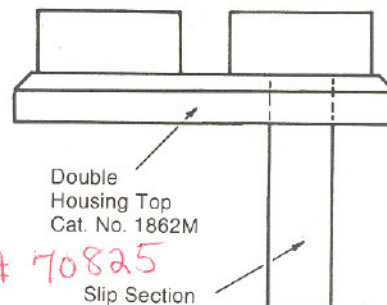


Cat. No. 712
2' Chimney Section



Cat. No. 713
3' Chimney Section

(Sometimes needed with
Offsets, or with Chase
Installations using
Terminal Caps)

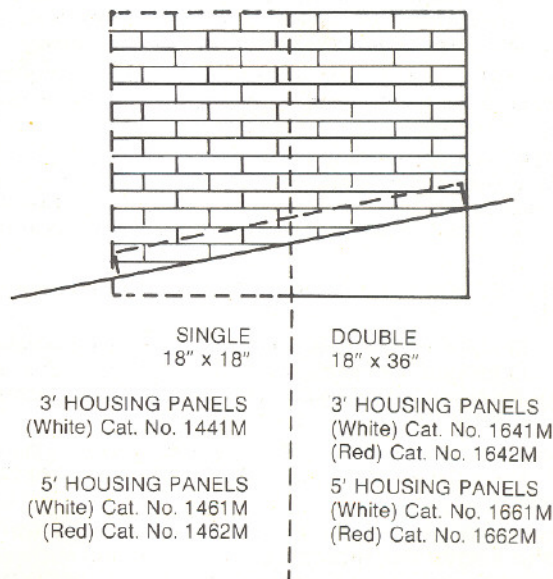


DOUBLE HOUSING TOP - Cat. No. 1862M

NOTE: With DOUBLE HOUSING, a 7" or 9" Slip Section will be required for the second chimney, depending on the appliance to be vented (Adapter included with 7" size). See HEATILATOR MARK 700 CHIMNEY data for only ONE chimney—cover disc is included with DOUBLE TOP.) Order ONE (if required) for second chimney:

9" Slip Section—Cat. No. 910

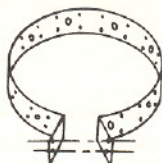
7" Slip Section—Cat. No. 710



ACCESSORIES



Cat. No. 716
Adjustable 0°-30° Elbows
(2/carton)



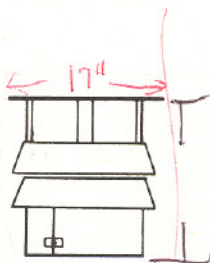
JOINT BAND—Cat. No. 722
Required for reinforcing joint between
Chimney Sections only when sections are
inclined or are exposed above roof.

GRATE—Cat. No. 19

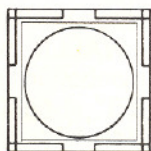
Raises fire off hearth for better fireplace operation,
holds fuel together for even burning.



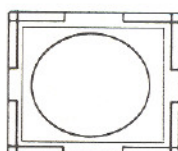
WARNING: Guarantee of Heatilator Fireplace is void
unless this grate or equivalent is used.



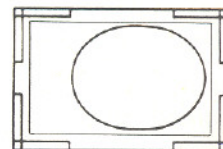
Cat. No. 725
Terminal Cap



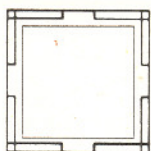
Cat. No. 719
For Vertical Chimney



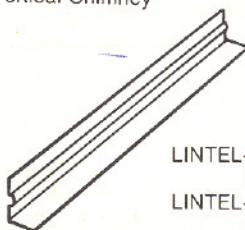
Cat. No. 3716
Use with 15° Inclined Chimney



Cat. No. 3731
Use with 30° Inclined Chimney



Cat. No. 3712
Radiation Shield



LINTEL—Cat. No. 3750—34" long (for 3028 Fireplace)

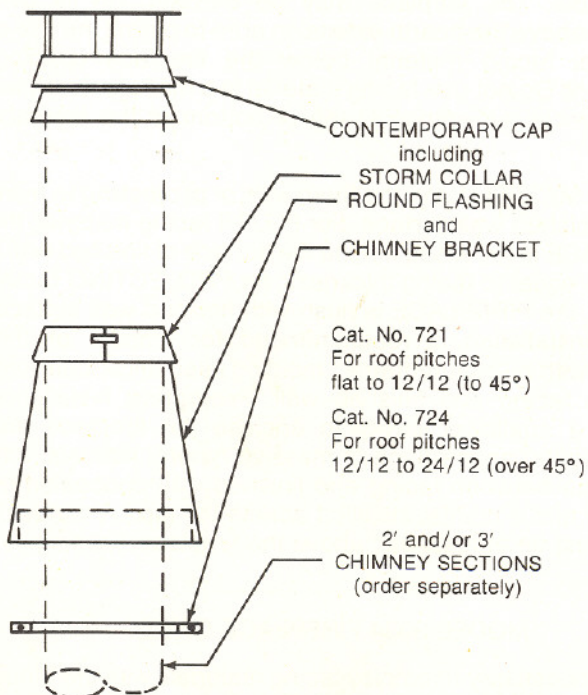
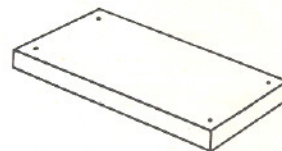
or

LINTEL—Cat. No. 3950—42" long (for 3034 Fireplace when
adding masonry surround)

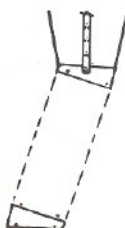
HEARTH EXTENSIONS

Cat. No. 3700 - 16" x 44"
(Use with 3028 and most 3034 installations)

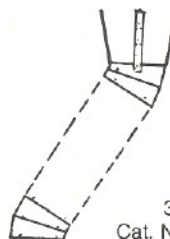
Cat. No. 3900 - 20" x 60"
(Use with 3034 when adding masonry surround.
See diagrams.)



CHIMNEY OFFSET & RETURN



15°
Cat. No. 3715



30°
Cat. No. 3730

— WARNING —

The INSTALLER is reminded, again, that ONLY
parts which are authorized (as shown on these
pages), received undamaged on site, properly
employed, and installed with care will result in a
safe installation. (The only locally-fabricated
metal parts permitted are the 44" special lintel,
Page 7, and the CHASE TOP, detailed on Page
14.

CONTEMPORARY CAP (or Terminal Cap) may be substituted for the
Single or Double Housing Panels & Tops. ONE OF THESE
TERMINATIONS OF THE CHIMNEY ABOVE THE ROOF MUST BE
USED. When ordering Contemporary Cap be sure to specify Cat. No.
according to roof pitch, so that correct flashing type will be included in
package.

PLANNING CONSIDERATION

CHECK LIST

BECAUSE THE HEATILATOR MARK 123 FIREPLACES ARE DESIGNED TO FULFILL MANY INSTALLATION POSSIBILITIES, A CAREFUL CONSIDERATION OF THE FOLLOWING CHOICES IS RECOMMENDED.

FRAMING CONSIDERATIONS:

FIREPLACE LOCATION will be influenced by such factors as traffic in rooms, door and window openings, and construction above and below fireplace. See diagram showing some location possibilities.

FLOOR which must support installation need not be reinforced unless sizable facings of heavy material are intended.

GAS LINE (required only when optional gas device is to be installed) should be planned to enter right side of fireplace; note position of gas pipe entry on fireplace diagrams.

OVERHEAD CONSTRUCTION (joists, trusses, rafters, pipes, etc.) will indicate best location of fireplace, chimney and enclosures. Study the methods shown on Pages 10, 11, and 12 for inclining the chimney, if necessary, and for framing correct ceiling openings. For vertical chimney ceiling openings, see Page 8.

FRAMEWORK around the fireplace may be planned to include bookshelves, woodbins, closets, or enclosures for other flues from floors beneath. In addition, the space above the fireplace's sloping sides permits shelves, niches, cabinets or other built-ins---such built-ins may be made accessible from front, sides, or rear. (MAINTAIN 2" MIN. CLEARANCE BETWEEN ALL CONSTRUCTION AND CHIMNEY.)

FIREPLACE OPENING FRAMING will be governed by flush or projecting facing materials and how far above or to sides of opening these will extend. See separate methods appropriate to 3028 or 3034 models, under FACING MATERIALS at right.

HEARTH EXTENSIONS

HEARTH EXTENSIONS ARE REQUIRED---see paragraph, 12 on Page 1. (Note also choice of sizes, Page 3, if factory-built Hearth Extension is to be used.)

HEARTH EXTENSIONS and entire fireplace may be recessed into the floor, installed on the sub-floor or finished floor, or raised on a suitable platform. If recessed or raised, provide a level surface strong enough to support the fireplace, chimney and Hearth Extension. **HEARTH EXTENSIONS** may be surfaced with any non-combustible material.

SPECIAL NOTE: If using Model 3028, fireplace may be raised, with Hearth Extension at a lower level, to allow facing material to be applied between bottom of fireplace and top of Hearth Extension. If using Model 3034, remember that side trims and screen cannot reach lower than bottom of fireplace; Hearth Extension surface should be level with bottom of fireplace or not more than 2½" higher than bottom of fireplace.

IMPORTANT: INSULATE CAREFULLY ALL EXTERIOR WALLS which surround fireplace, as shown by symbol in diagram "SOME LOCATION POSSIBILITIES" at right. Especially note that **CHASE** surrounding fireplace is fully insulated. **REASON**---To prevent extremely cold metal surfaces in winter, so that drafts of chilled air through small cracks around the fireplace opening will not occur.)

FACING MATERIALS:

MODEL 3028 FIREPLACE ONLY:

NON-COMBUSTIBLE FACING MATERIAL (glass, marble, brick, tile, stone, etc.) may be applied to the three face surfaces of the installed fireplace. Minimums of 4" at sides and 6" at top have been established; any greater widths are permissible. The fireplace may be elevated on its own platform above the hearth extension area to permit the use of additional facing material below the fireplace opening. **CAUTION:** Do not use facing material in a manner which will block special air entries at top or bottom of the fireplace opening.

FACING MATERIAL may be flush with, or projecting in front of, the finished wall surface. For **FLUSH** facing material, the **FIREPLACE** is recessed behind the surface of finished wall a distance equal to facing thickness; for **PROJECTING** facing material, the **FIREPLACE** is flush with finished wall surface. (Flush installation is recommended for smooth or thin facings, with a "picture frame" molding used to conceal joint between facing and finished wall. **Projecting** installation permits a shallower cavity to enclose the fireplace and enhances the appearance of massive natural materials, with side joints between facing and finished wall concealed by caulking and a mantel installed across the top.) A mantel, if used, must be at least 12" above the fireplace opening.

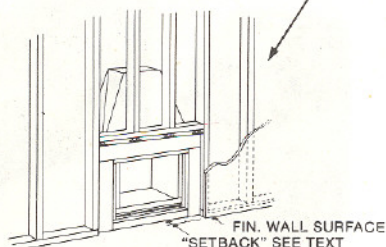
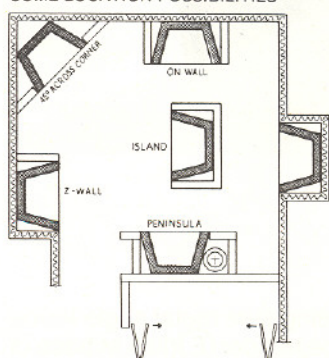
MODEL 3034 FIREPLACE ONLY:

It is not necessary to employ facing materials with the Model 3034; the Screen Hood and Side Trims are designed to finish off neatly the fireplace sides and top in a flush installation. (However, if desired, **NON-COMBUSTIBLE FACING MATERIAL**—glass, marble, brick, tile, stone, etc.—may be applied above the Screen Hood or beyond the Side Trims for any distance, and such non-combustible materials may be flush with, or projecting in front of, the finished wall surface. See page 7 for facing details.)

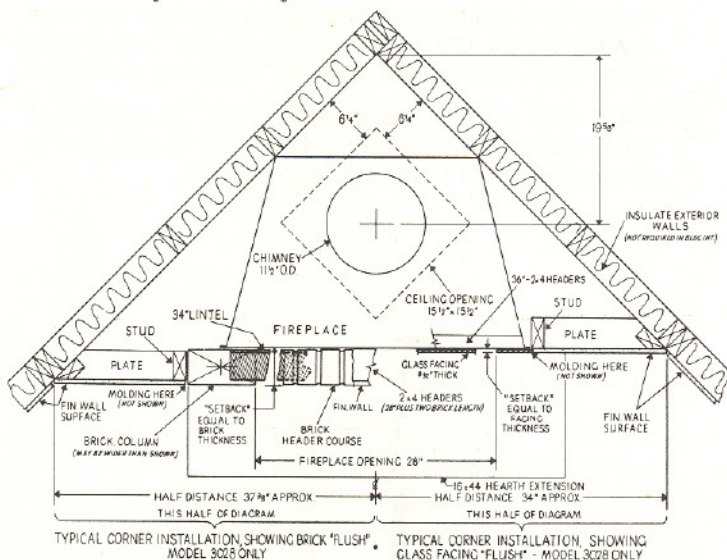
FRAMING THE FIREPLACE

The illustrations below and at right may suggest possibilities, but may not serve exactly as shown for your installation. Determine SUPPORT method first, then the ENCLOSURE FRAMING. It is important to remember that FACINGS FLUSH WITH FINISHED WALL SURFACES require "Setback" measured from the surface of finished wall to metal front of fireplace. If FACINGS PROJECT IN FRONT OF FINISHED WALL SURFACE, align metal front of fireplace with surface of finished wall.

SOME LOCATION POSSIBILITIES



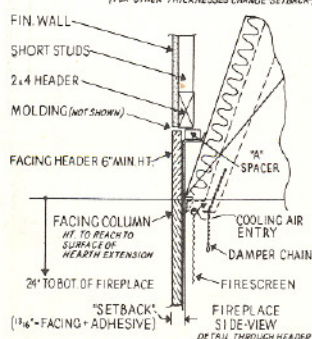
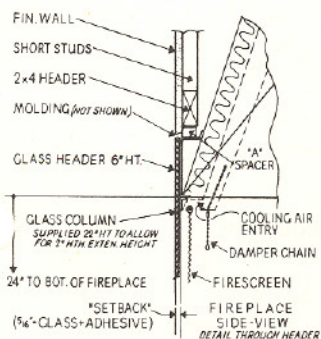
FIREPLACE
IN
CHASE,
GARAGE,
ETC.



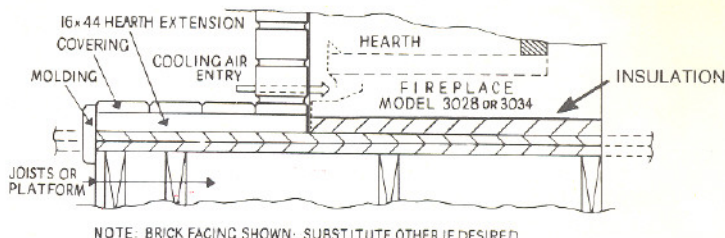
GLASS—FLUSH MODEL 3028 ONLY

3/4" SLATE, MARBLE, ETC.,—FLUSH MODEL 3028 ONLY

(FOR OTHER THICKNESSES CHANGE "SETBACK")

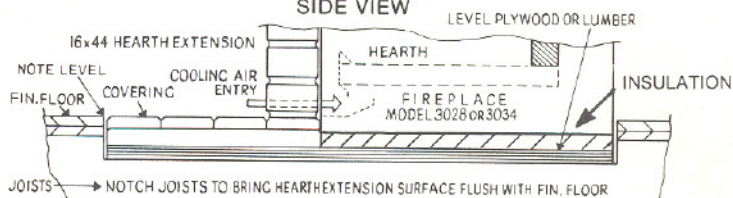


TYPICAL FIREPLACE ON FLOOR OR PLATFORM SIDE VIEW



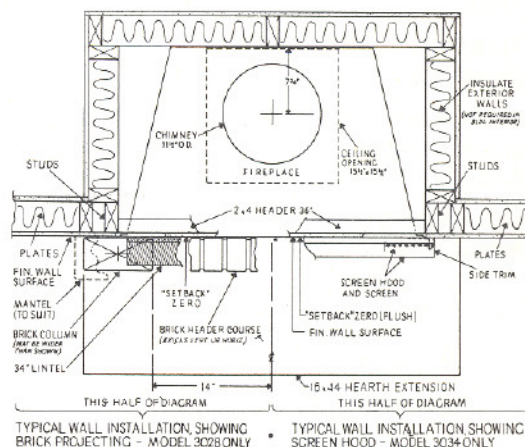
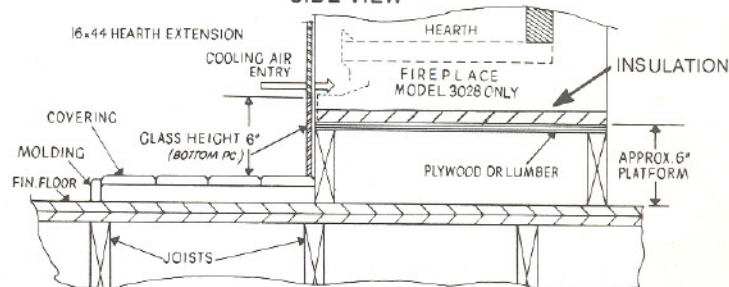
NOTE: BRICK FACING SHOWN; SUBSTITUTE OTHER IF DESIRED

HEARTH EXTENSION AND FIREPLACE RECESSED SIDE VIEW



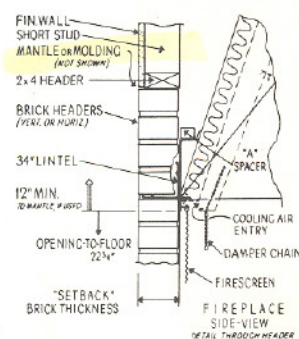
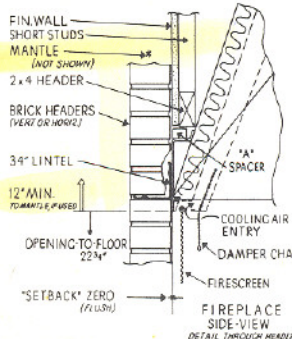
NOTE: BRICK FACING SHOWN; SUBSTITUTE OTHER IF DESIRED

RAISED FIREPLACE FOR FULL (FOUR SIDES) GLASS FACING SIDE VIEW



BRICK—PROJECTING MODEL 3028 ONLY

BRICK—FLUSH MODEL 3028 ONLY



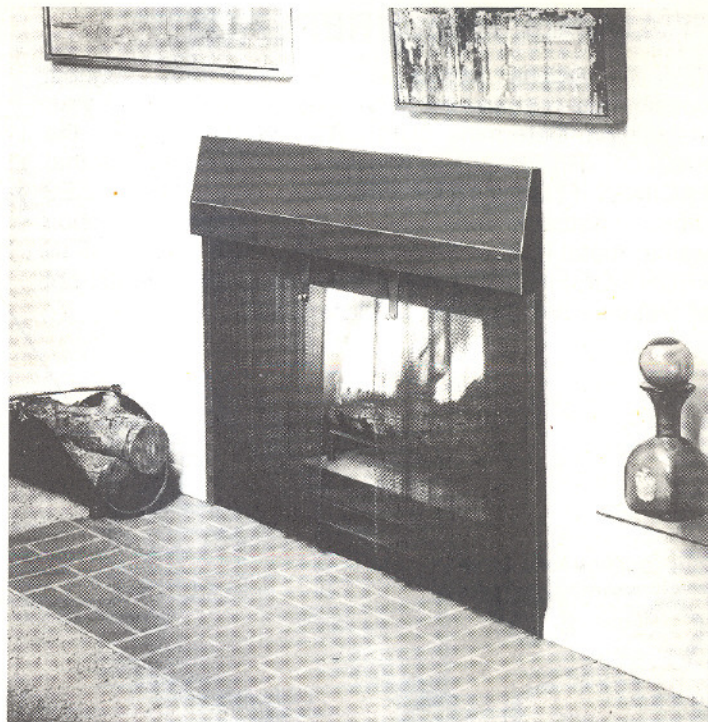
NOTE: "GLASS" may be 1/4" mirror, opaque colored glass, or thin tile. Adjust SETBACK to accommodate thickness of material.

SIDE TRIMS / SCREENS / HOOD INSTALLATION

MODEL 3034

Diagram below shows parts required, from fireplace carton. Radiation Shield (A) and Locking Bars (with Guides), (B) are factory-installed. The Locking Bars are in "down" position—do not change yet.

IMPORTANT: Metal face of fireplace must be flush with surface of finished wall (C). Wall may be painted first, if desired, before final parts are installed. (Hood parts may be installed on fireplace before wall is completed, but normal procedure is to complete wall first.)

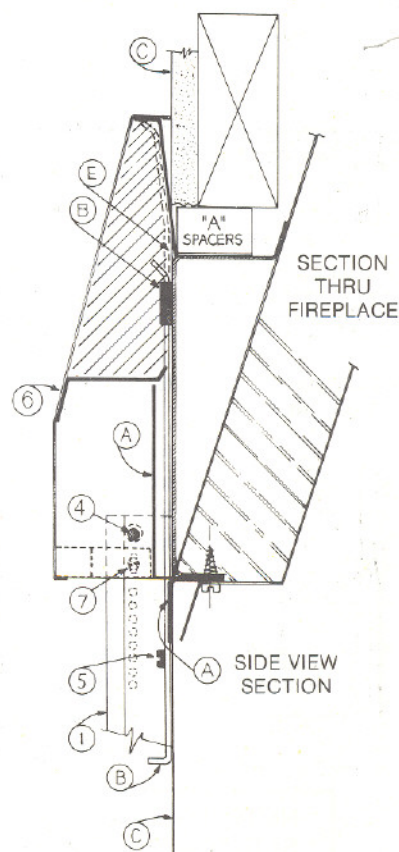
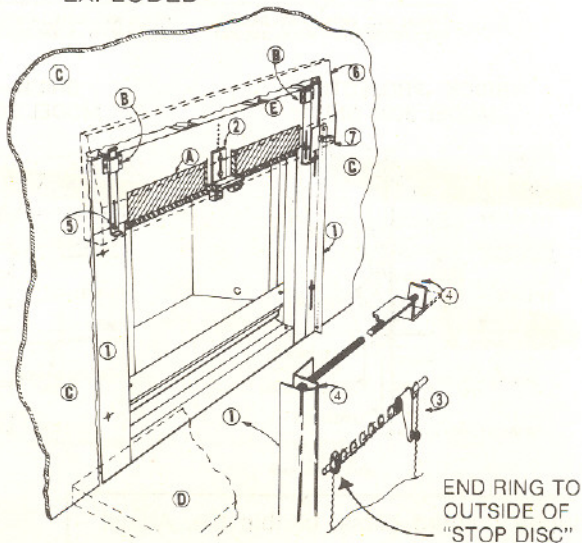


STEP-BY-STEP

(Note: Step numbers 1 through 7 relate to product parts numbered in illustrations below.)

- ① Attach Side Trims with two #10 x 3/8" screws each, and lower the trims until they rest on Hearth Extension (D). (Side Trims are alike—install either side.)
- ② Attach Screen Rod Bracket with two #10 x 3/8" screws, placing rod holes at same height as rod holes in Side Trims.
- ③ Thread Screen Half and Handle on Rod, as shown (handle is between last two rings).
- ④ Insert Rod into Bracket, then into Side Trim; bend up bracket end to secure rod. Repeat for other screen half. Adjust center rod bracket for height, if necessary.
- ⑤ Loosen single screw in each Locking Bar. All other screws should be tight.
- ⑥ Place Hood against wall, being sure metal angle inside hood rests on top of fireplace header (E) (just at base of A-shaped spacers); hold hood at this position, and push upward to their full height each locking bar. The bars will press hood against wall surface. Tighten screws (5).
- ⑦ Install a #7 x 1/2" screw through small Tie bracket at each end of hood. Screw enters hole in side trim to secure bottom of hood tight against wall.

PERSPECTIVE VIEW
EXPLODED



MODEL 3034 FACING

(OPTIONAL)

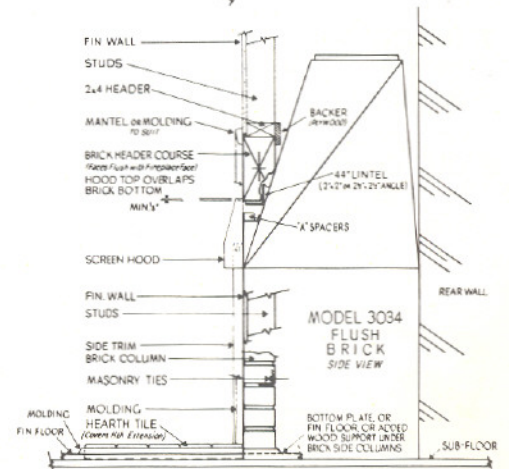
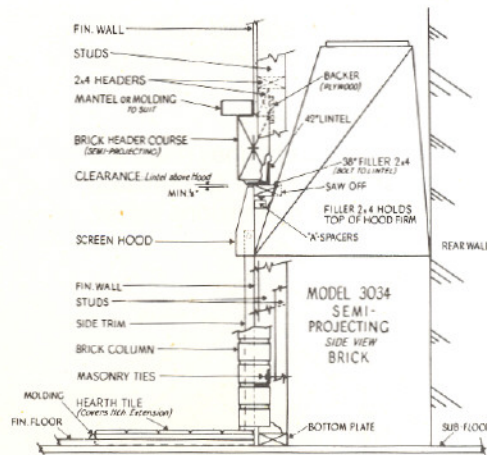
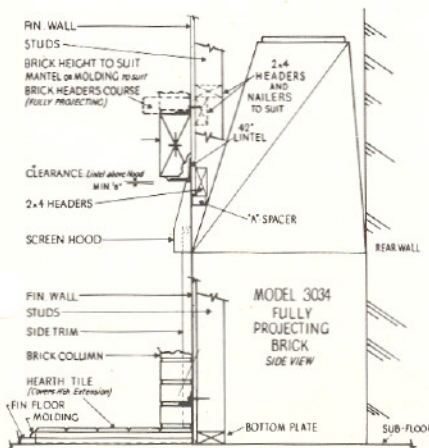
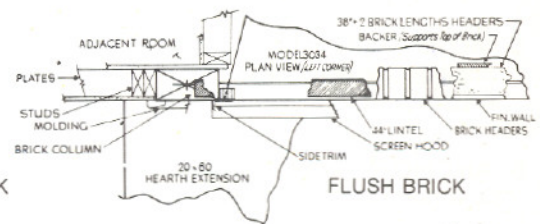
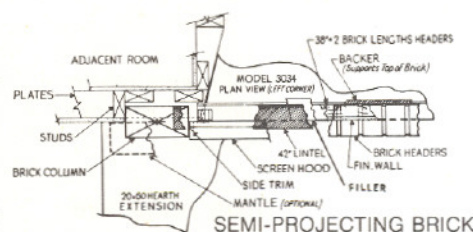
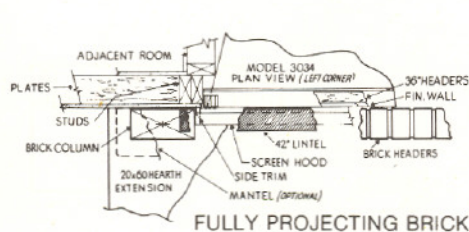


As stated previously in these Directions, facing is not required with the Model 3034 fireplace, but may be applied whenever it is desired to increase the visual size of the fireplace or to create a specific decor. Note, for example, how brick in photo at left increases apparent fireplace size and establishes Early American decor. Many other materials may be utilized as preferred.

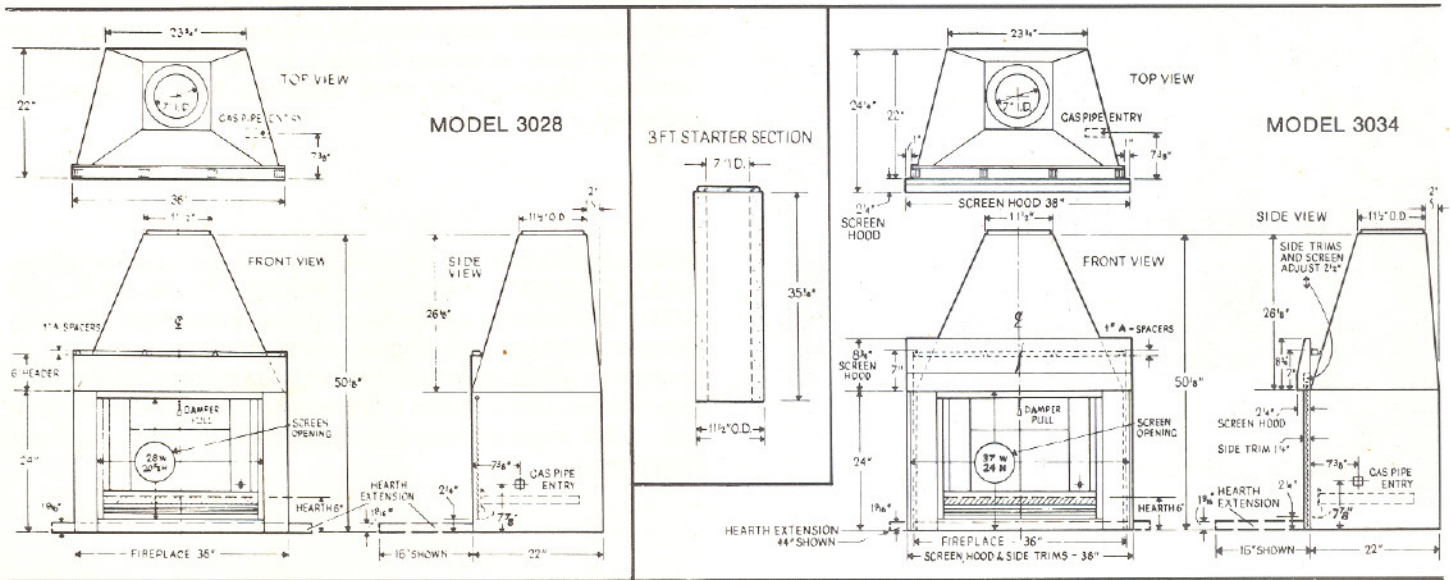
Decide, before framing for walls, whether facing material is to FULLY PROJECT, PARTIALLY PROJECT, OR BE FLUSH WITH—the finished wall surface. In diagrams below, the three different methods are shown, using brick for purposes of illustration. Other materials may dictate different framing from ways shown. (Note: When a facing is to be applied some time later, after original fireplace installation, it must be Fully Projecting.)

In these diagrams, special attention is invited to:

1. Use of oversize HEARTH EXTENSIONS; the Extension, if at least as wide as the planned masonry, enhances the fireplace size appearance and often is useful to support masonry columns.
2. Use of oversize LINTEL (note 42" lintel in first two drawings below, 44" special 2" x 2" locally-fabricated lintel in third "FLUSH BRICK" drawing.)
3. Maintenance of $\frac{1}{8}$ " clearance between lintel and hood in first two illustrations.
4. Use of MASONRY TIES at numerous places to anchor brick to studs and headers.



- CHECK** all carton contents, and **IDENTIFY** the required items in Fireplace Package as illustrated, and any alternate or accessory parts selected. **READ** all Installation Directions which accompany components.



- NOTE DIMENSIONS** of fireplace and Starter Section. Your installation planning should be completed before continuing. See **PLANNING CONSIDERATION—Check List**.
- CHECK** the operation of damper (OPEN when handle is **up**, CLOSED when handle is **down** and large bead on chain is seated just under notch). Damper is adjustable **ONLY** for closed or open positions.
- MOUNT** the Starter Section on top of fireplace (Fig. 1). Holes in bottom of Starter Section will now align with matching holes in fireplace top. Secure Starter Section to top of fireplace with four #8 x 1" screws provided. (If using Fireplace Offset to incline chimney, see Offset details.)

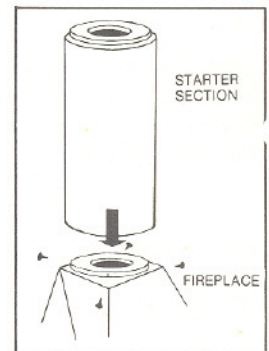


FIG. 1

- MOVE** fireplace into planned location; unless fireplace is to be held securely in position by walls and Hearth Extensions, fasten blocks to floor to prevent fireplace from shifting (Fig. 2). Insert insulation pad under fireplace.
- ANCHOR** Hearth Extension to floor with appropriate fasteners, being sure fasteners enter solid construction (Fig. 3).
- IMPORTANT:** Ceiling Opening is **not** 15 1/2" x 15 1/2" (as described below) for chimney inclined at 15° or 30° where it penetrates ceiling or floor. See Offset details for inclined chimney openings.

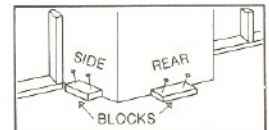


FIG. 2

- CUT CEILING OPENING** 15 1/2" x 15 1/2" square, for vertical chimney (Figs. 4 & 5). "Box" (Fig. 5A) around opening to provide nailing surface for Firestop Spacer. If fireplace is tight against a wall or in a corner, use dimensions below.

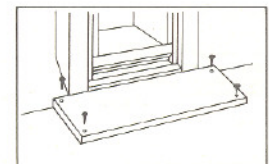


FIG. 3

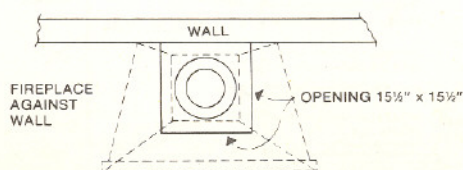


FIG. 4

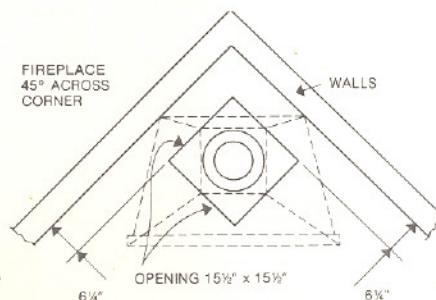


FIG. 5

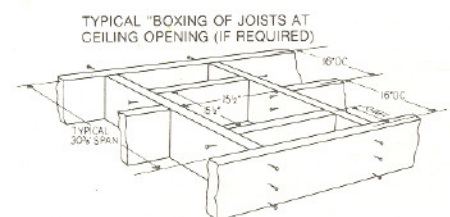


FIG. 5A

LLTION DIRECTIONS

(If fireplace is away from wall, use plumb line or straight edge with level to locate center of opening, gauging on center of closed damper.)

9. **FIRESTOP SPACER** is installed next, as shown in Fig. 6, for all openings not at attic level; as shown in Fig. 7 for opening leading to an attic. Nail through flanges into joists and "box" members. Do not pack insulation into areas between Firestop Spacer and joists. **OFFSET NOTE:** When hanger straps of Offset Return interfere with normal "upward" installation, install Firestop Spacer "downward" (Fig. 7).

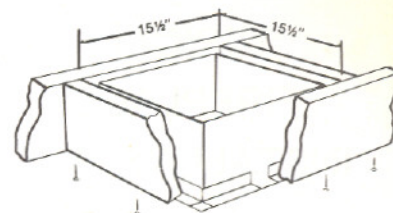


FIG. 6

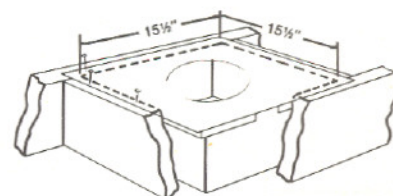


FIG. 7

---WARNING---

If total overall height of fireplace and chimney will be between 12' and 16', the **SPECIAL LOW HEIGHT RADIATION SHIELD** will require careful attention to roof opening. See Detail, P. 12.

11. **ROOF TERMINATION** is completed according to detailed directions shipped with the components selected. (See brief description of choices under **ACCESSORIES**.)

12. **FRAMING** should now be completed in accordance with diagrams and suggestions under the "Framing the Fireplace" portion of these directions. The Model 3028 framing method may differ from Model 3034.

13. **FIREPLACE SCREEN** (Model 3028 Fireplace only) is shipped fully installed; remove protective paper wrap. (If screen, rod, or handles are to be removed for any reason, note Fig. 9 at right explaining re-assembly. Screen Cover is removed or replaced via two #10 x 1/2" screws.)

14. **SCREEN HOOD AND SIDE TRIMS** (Model 3034 Fireplace only) may be installed as soon as finished wall is applied over framing, with final painting completed first if desired; Hearth Extension is usually completed first. See special section, Model 3034, Page 6.

15. **FACING** (Model 3028 Fireplace only) of brick, stone, or other heavy materials should be anchored to fireplace front with numerous Masonry Ties; attach ties via sheet metal screws as lay-up proceeds. (It is optional whether **FACING** or **Hearth Extension SURFACING MATERIAL** is installed first—materials used will dictate best procedure.) **MASONRY LINTEL** to support masonry across top of fireplace opening rests on masonry columns. Less massive materials, such as glass or marble, are applied with a suitable adhesive to fireplace front surfaces; provide support for facing until adhesive sets.

16. **FACING** (Model 3034 Fireplace only) is optional. If employed, facing is used outside the Side Trims and above the Hood. See illustrations on Page 7 showing preparatory framing for brick, in **fully projecting, semi-projecting and flush** method. Note use of lintel; do not allow brick or any facing materials to rest on Hood. Thin facing materials (glass, marble, tile, etc.), are applied to surface of finished wall, and secured by appropriate adhesive or surrounding molding or both.

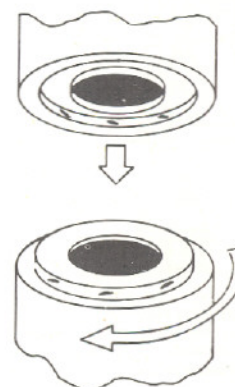


FIG. 8

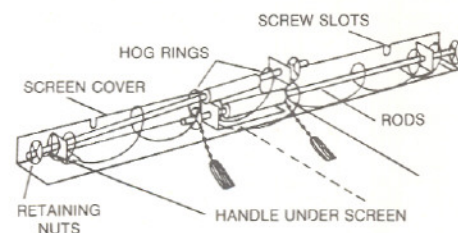
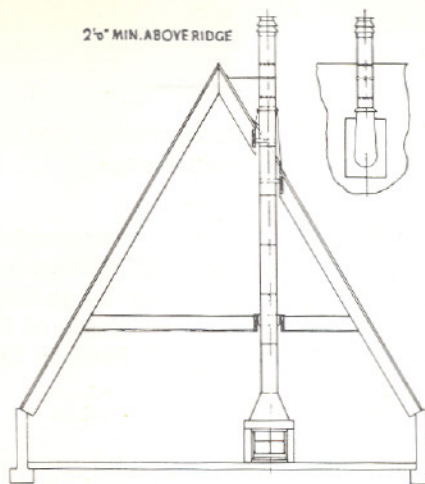


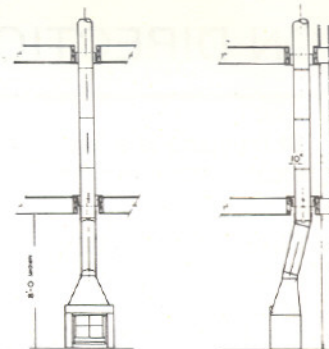
FIG. 9

TYPICAL FIREPLACE INSTALLATIONS

2'-0" MIN. ABOVE RIDGE

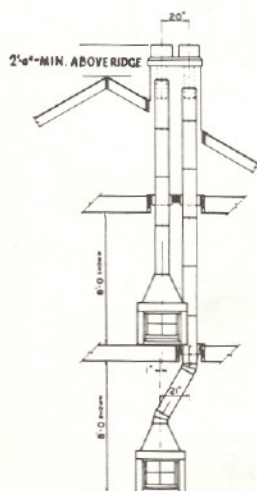


CAT. NO. 3028 FIREPLACE
(A-FRAME INSTALLATION)
TERMINATION ABOVE ROOF
IS VIA CONTEMPORARY CAP.

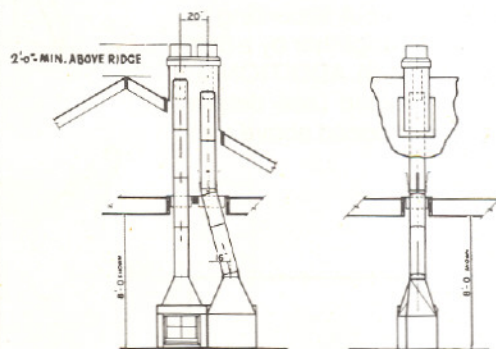


CAT. NO. 3028 FIREPLACE
(45° ACROSS CORNER)

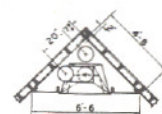
CHIMNEY IS OFFSET TO OCCUPY MINIMUM SPACE
IN UPPER FLOOR. IN ONE-STORY, FIREPLACE CAN
MOVE TIGHT INTO CORNER, NO OFFSET
REQUIRED.



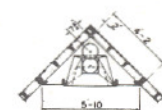
TWO CAT. NO. 3028 FIREPLACES
(TWO-STORY) FIREPLACE CENTERLINES
SHIFT 1", TO PERMIT USE OF DOUBLE
HOUSING TERMINATION.



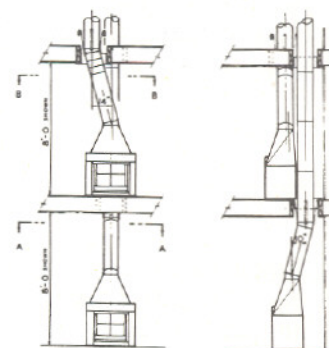
TWO CAT. NO. 3028 FIREPLACES
(SIDE-BY-SIDE, ONE-STORY)
FIREPLACES FACE OPPOSITE DIRECTIONS, UTILIZE DOUBLE
HOUSING.



SECTION B-B



SECTION A-A



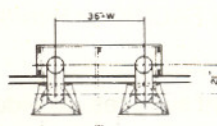
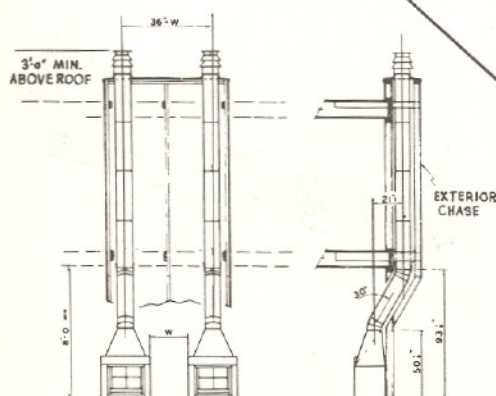
TWO CAT. NO. 3028 FIREPLACES
(45° ACROSS CORNER, TWO-STORY)
BOTH CHIMNEYS OFFSET TO PERMIT DOUBLE HOUSING TERMINATION.

ABOVE AND LEFT

Typical Single-Family or Multiple-Unit-Dwelling
installations. Choice of four Roof Termination
options available.

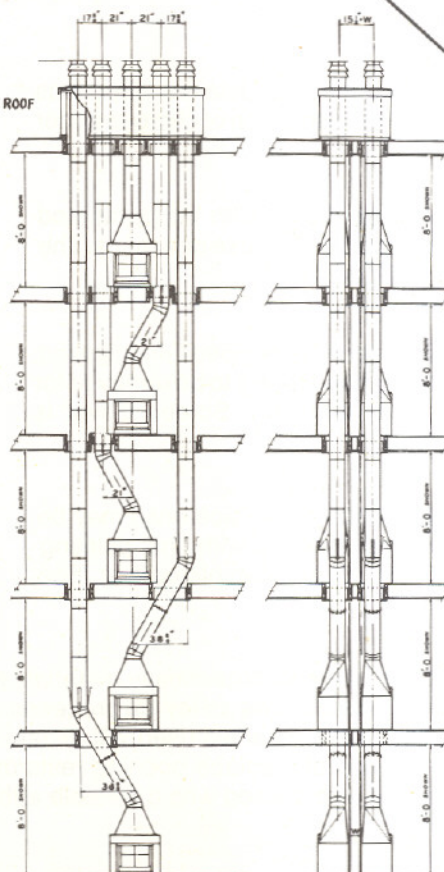
BELOW AND LEFT

Typical Multiple-Unit-Dwelling installations, with
Terminal Caps used on locally-constructed Chase.

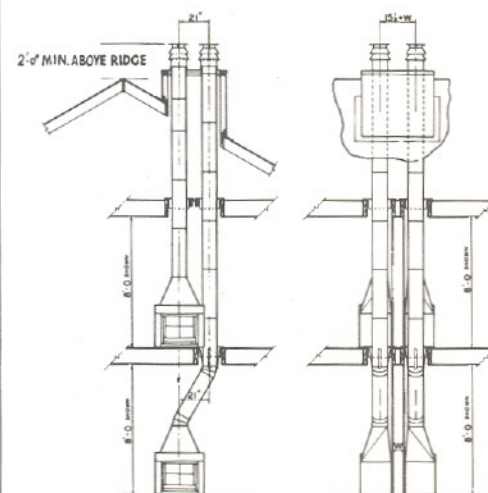


TWO CAT. NO. 3028 FIREPLACES
(BOTH CHIMNEYS INTO EXTERIOR CHASE)
FIREPLACES FACE SAME DIRECTION. NOTE: DIMENSION
"W" WILL INCLUDE A PARTY WALL; FIREPLACE OPENINGS
CANNOT BE CLOSER TO WALL THAN 3".

3'-0" MIN. ABOVE ROOF



TEN CAT. NO. 3028 FIREPLACES
(BACK-TO-BACK, FIVE-STORY)
FIREPLACES ARE ON SAME CENTERLINE. TERMINATION
ABOVE ROOF IS VIA LOCALLY-CONSTRUCTED CHASE.



FOUR CAT. NO. 3028 FIREPLACES
(BACK-TO-BACK, TWO-STORY)
FIREPLACES ARE ON SAME CENTERLINE. TERMINATION
ABOVE ROOF IS VIA LOCALLY-CONSTRUCTED CHASE.

FIREPLACE OFFSET CHART

USE OF 15° & 30° OFFSETS

	"A"	"B"
TOTAL SHIFT	HT. FROM TOP OF FIREPLACE TO TOP OF THE SUPPORT OFFSET	
15°		
*Offset used alone	7/8"	6 1/2"
Off. & St.Sec.	10"	40 1/2"
Off. & St.Sec. + One 2' Chim.	16"	63"
Off. & St.Sec. + One 3' Chim.	19 1/8"	74 1/2"
Off. & St.Sec. + Two 2' Chim.	22"	85 1/2"
Off. & St.Sec. + One 2' Chim. + One 3' Chim.	25 1/8"	97"
30°		
*Offset used alone	3 3/8"	12 1/2"
Off. & St.Sec.	21"	43"
Off. & St.Sec. + One 2' Chim.	32 5/8"	63 1/8"
Off. & St.Sec. + One 3' Chim.	38 5/8"	73 1/2"
Off. & St.Sec. + Two 2' Chim.	44 1/4"	83 1/4"
Off. & St.Sec. + One 2' Chim. + One 3' Chim.	50 1/4"	93 5/8"

*On top of vertically-installed Starter Section.

OFFSET USE

FIREPLACE OFFSETS are fixed at 15° or 30° at the factory, and cannot be used to incline the chimney at any other angle. CHART gives exact data for planning at 15° and 30°.

INCLINED CHIMNEYS/ELBOW USE

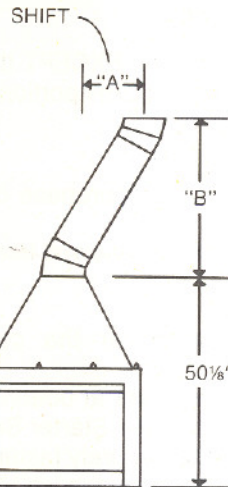
ADJUSTABLE 0-30° ELBOWS CAT. NO. 716

Elbows are intended for use ONLY at upper areas of chimney, and cannot be used within the room in which the fireplace is located (see Offset Chart). Elbows, in pairs, are adjustable for any angle from 0° to 30°. NOTE: If only one pair of elbows is used, chimney must incline 15°. For any other angle, two pairs must be used. Installation instructions are packed in each elbow carton.

INCLINED CHIMNEYS AT VARIOUS ANGLES

(Using 0°-30° Adjustable Elbows -- See Elbow Text)

	EACH 2' CHIM. SEC. Adds To Shift	Adds To Ht.	EACH 3' CHIM. SEC. Adds To Shift	Adds To Ht.
5° Incline	2"	23 1/8"	3 1/16"	35 1/16"
10° Incline	4 1/16"	22 7/8"	6 1/8"	34 11/16"
15° Incline	6"	22 7/16"	9 1/8"	34"
20° Incline	8"	21 13/16"	12 1/16"	33 1/8"
25° Incline	9 7/8"	21 1/16"	14 7/8"	31 15/16"
30° (Max.) Incline	11 5/8"	20 1/8"	17 5/8"	30 1/2"



HEIGHT LIMITATIONS

"Height of chimney SUPPORTED BY FIREPLACE to be not more than 55 ft." (Chart ① goes to 59 ft. because fireplace is 4 ft. high, approx.)

"When a Chimney Offset is employed, the height of chimney SUPPORTED BY OFFSET to be not more than 60 ft." (Chart ② goes to 59'8".)

①

VERTICAL INSTALLATION
HT. TO CHIMNEY TOP



INCLUDES THE
FIREPLACE, 3'
START. SEC., &
CHIM. SEC. SHOWN

2 FT. 3 FT.
SEC. SEC. HEIGHT

1	0	9' 0"
0	1	10' 0"
2	0	11' 0"
1	1	12' 0"
0	2	13' 0"
2	1	13' 11"
1	2	14' 11"
0	3	15' 11"
2	2	16' 10"
1	3	17' 10"
0	4	18' 10"
2	3	19' 9"
1	4	20' 9"
0	5	21' 9"
2	4	22' 9"
1	5	23' 9"
0	6	24' 9"
2	5	25' 8"
1	6	26' 8"
0	7	27' 8"
2	6	28' 7"
1	7	29' 7"
0	8	30' 7"
2	7	31' 6"
1	8	32' 6"
0	9	33' 6"
2	8	34' 6"
1	9	35' 6"
0	10	36' 6"
2	9	37' 5"
1	10	38' 5"
0	11	39' 5"
2	10	40' 4"
1	11	41' 4"
0	12	42' 4"
2	11	43' 3"
1	12	44' 3"
0	13	45' 3"
2	12	46' 3"
1	13	47' 3"
0	14	48' 3"
2	13	49' 2"
1	14	50' 2"
0	15	51' 2"
2	14	52' 1"
1	15	53' 1"
0	16	54' 1"
2	15	55' 0"
1	16	56' 0"
0	17	57' 0"
2	16	58' 0"
1	17	59' 0"

See Ht. Limitations
In Box Above

②

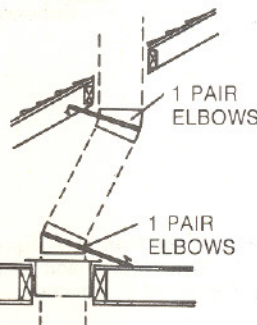
HT.—CHIMNEY ONLY *

2 FT. 3 FT. HEIGHT

1	0	1' 11"
0	1	2' 11"
2	0	3' 10"
1	1	4' 10"
0	2	5' 10"
2	1	6' 10"
1	2	7' 10"
0	3	8' 10"
2	2	9' 9"
1	3	10' 9"
0	4	11' 9"
2	3	12' 8"
1	4	13' 8"
0	5	14' 8"
2	4	15' 7"
1	5	16' 7"
0	6	17' 7"
2	5	18' 7"
1	6	19' 7"
0	7	20' 7"
2	6	21' 6"
1	7	22' 6"
0	8	23' 6"
2	7	24' 5"
1	8	25' 5"
0	9	26' 5"
2	8	27' 4"
1	9	28' 4"
0	10	29' 4"
2	9	30' 4"
1	10	31' 4"
0	11	32' 4"
2	10	33' 3"
1	11	34' 3"
0	12	35' 3"
2	11	36' 2"
1	12	37' 2"
0	13	38' 2"
2	12	39' 1"
1	13	40' 1"
0	14	41' 1"
2	13	42' 1"
1	14	43' 1"
0	15	44' 1"
2	14	45' 0"
1	15	46' 0"
0	16	47' 0"
2	15	47' 11"
1	16	48' 11"
0	17	49' 11"
2	16	50' 10"
1	17	51' 10"
0	18	52' 10"
2	17	53' 10"
1	18	54' 10"
0	19	55' 10"
2	18	56' 9"
1	19	57' 9"
0	20	58' 9"
2	19	59' 8"

(*Does NOT Include Starter Section)

ELBOWS SHOWN
ADJUSTED TO 30°



USE OF FIREPLACE OFFSET OVAL FIRESTOP SPACER AND SPECIAL LOW HEIGHT RADIATION SHIELD

—OBSERVE— LIMITATIONS ON OFFSET USE

OFFSET is intended for use ONLY in the fireplace room, EXCEPT that the inclined chimney may penetrate the ceiling (with the RETURN portion of the offset installed within or above the ceiling construction).

FURTHER LIMITATIONS:

1. OFFSET may incline chimney 15° or 30° ONLY (purchase correct factory-assembled sets).
2. Chimney may INCLINE to left, right, rear, or front--as viewed from front of fireplace.
3. MAXIMUM inclined chimney length is 8'.
4. FIRESTOP-SPACER must be installed whenever the chimney penetrates a ceiling.
5. JOINT BAND must be used to reinforce every joint at bottom of an inclined chimney section, except for screw-fastened Starter Section.
6. HANGER STRAPS of the Return Offset must be securely fastened on all four sides to substantial construction to safely carry the weight of all chimney sections above.

INSTALLATION: Assemble Starter Offset to Starter Section, mount assembly on fireplace. Secure with #8 x 1" screws supplied. If inclined chimney will penetrate ceiling, see Firestop Spacer directions below. Otherwise, install Return Offset. (See Steps 8 & 9 of STEP-BY-STEP Instructions for regular vertical Firestop Spacer use.)

Nail hanger straps to wood members of boxed opening (Fig. 1) using at least 3 nails per strap, min. 8-penny size. (Firestop Spacer installs "downward" when straps fasten to joists.) If hanger straps are located where they cannot reach the joists, install wood members appropriate for nailing.

SPECIAL SUPPORT OFFSET NOTE: When Return Offset Section mounts on regular Chimney Section (Cat. Nos. 712 or 713), punch or drill four holes 1/16" dia. in upper end of chimney, using holes in Support Offset as a guide. Be sure top surface of Return Offset is level when screw-fastened to section below so rest of chimney rises plumb.

OVAL FIRESTOP SPACERS: Using straightedge as illustrated (Fig. 1), mark point on ceiling where inclined chimney's "upper surface" will penetrate. Construct "boxed" opening 15½" wide by appropriate length. Opening begins 2" outside ceiling mark, as shown (Figs. 3 and 4).

RADIATION SHIELD

The opening where the chimney passes through the roof must be framed to 15½ x 15½, and the low height radiation shield Cat. No. 3712 installed as shown in figures 5 and 6. Nail the shield flange to the ceiling or rafters for flat roof and to the framing members for a pitched roof. The shield flange must be bent down 90 degrees on three sides to secure it in place on a pitched roof.

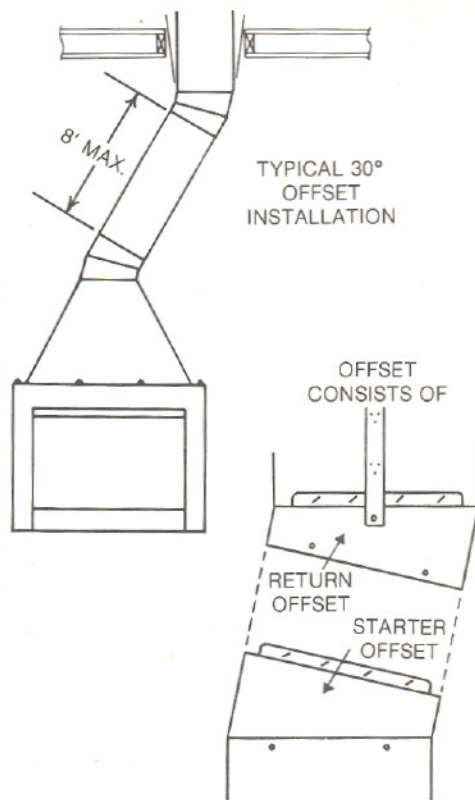


FIG. 1

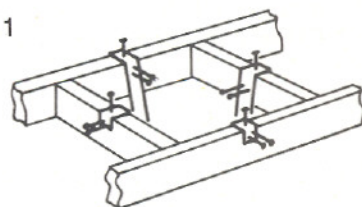


FIG. 2

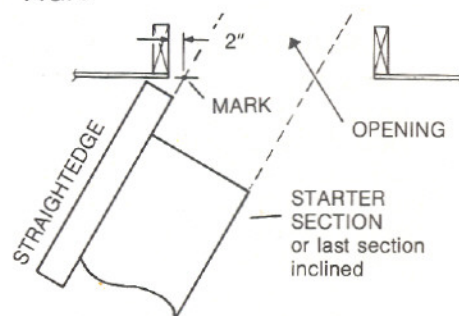


FIG. 3

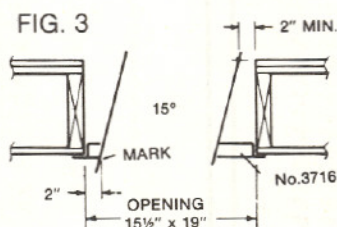
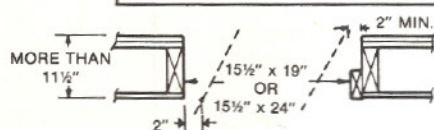


FIG. 4

FIRESTOP-SPACER DIRECTIONS



NOTE: For floors thicker than 11½", construct opening longer than regular, and fill in as shown to keep required 2" clearance.

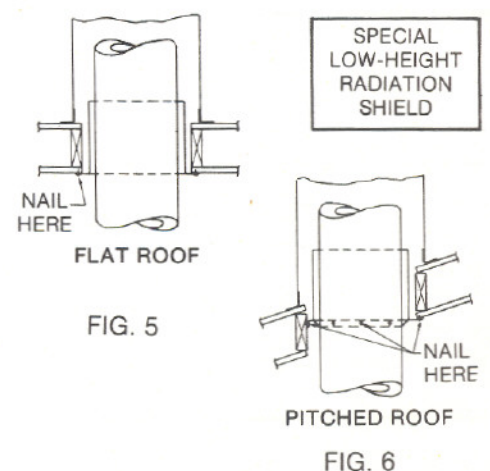
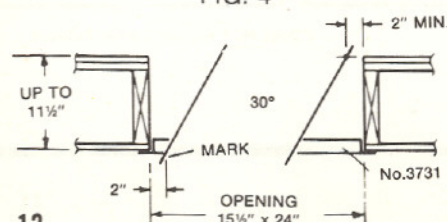


FIG. 5

FIG. 6

MARK 123 Fireplace

GAS DEVICES

If desired, a gas log lighter (or gas log set) may be installed in the Mark 123 Fireplace. (Such devices are not made by Vega Industries, Inc.) Installation should follow these directions, and special attention should be given to any other information supplied with the gas device.

OBSERVE THE FOLLOWING PRECAUTIONS:

- Use only iron pipe, $\frac{1}{2}$ " size, and appropriate iron fittings.
- If installing a log lighter, use only a model having a valve designed for installation outside the fireplace. A removable key affords extra safety. (Such a model is shown in Fig. 1)
- Cap the pipe stub end in the chamber of the fireplace until the device is installed, or when device is removed for any reason.

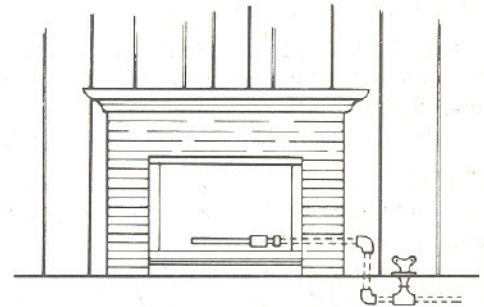


FIG. 1

STEP-BY-STEP

- Note the Tube Shield and Pry-disc shown in Fig. 2. Other parts of the fireplace are named for reference.
- Remove Pry-disc from Wing Panel---with knife blade as shown in Fig. 3. Insert blade at rear, then pry forward.

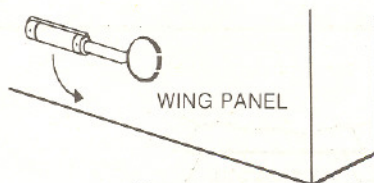


FIG. 3

- From inside of fireplace, push length of pipe gently through pry-disc hole until pipe comes up against soft insulation, with which the tube shield is packed. Push insulation to outside---save it for re-use.

- When gas line has been completed to a point just outside fireplace, install a nipple having length suitable to device. Add cap unless device to be installed now. Re-pack insulation in Tube Shield as shown in Fig. 4.

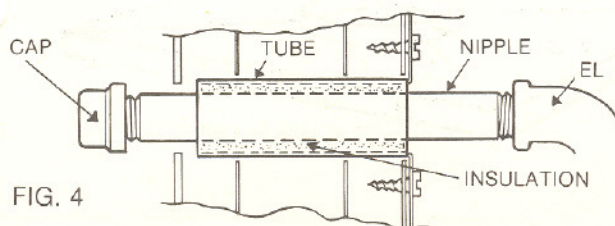


FIG. 4

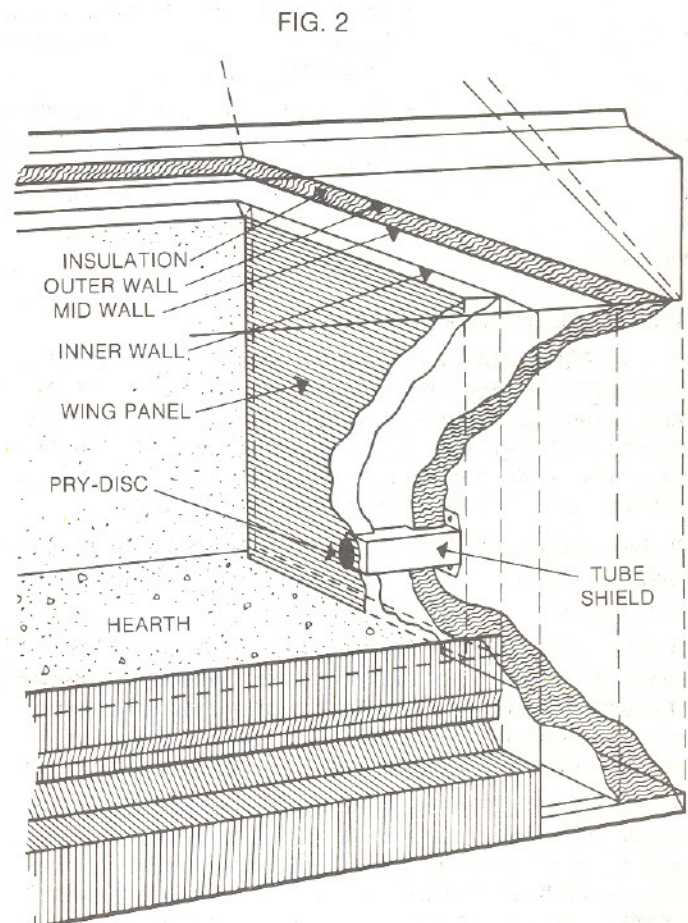
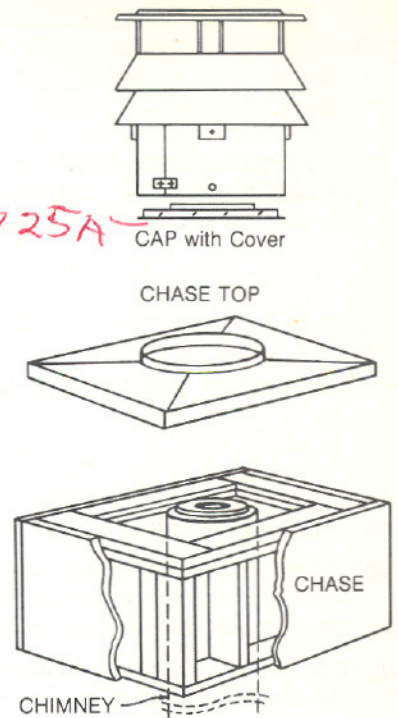


FIG. 2

TERMINAL CAP

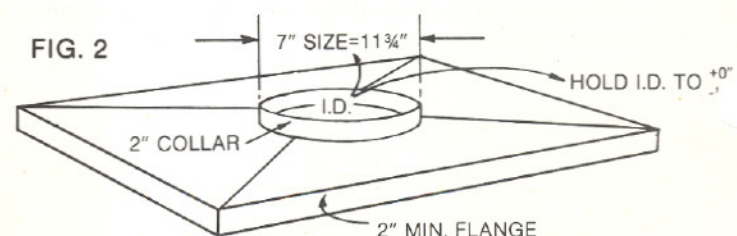
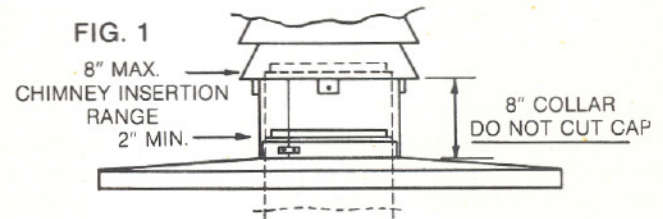
DEFINITIONS:

The **CHASE** is a hollow vertical enclosure, constructed as a permanent part of the building. The **CHASE** may be a relatively simple and small box-like construction for installation on a roof, as shown at right--containing only the upper ends of chimneys. The **CHASE** however, may alternatively be located **outside** the general exterior walls of the building, be sized to contain one or more fireplaces as well as their chimneys, and be of a height which will satisfy the requirements of the building design and code requirements for chimney height-above-roof.



1. **SUPPORT** fireplace on full-area, level surface--as instructed in Paragraph 2, Page 1.
2. **INSULATE** beneath the level support area, and insulate all exterior walls of the chase, at least to first-ceiling height (Insulating reduces heat loss, minimizes drafts.)
3. To provide increased protection against Chase becoming a cold cavity in winter when fireplace is not in use, install a "rough" but complete-area **CEILING** approximately 7'-8' above floor, with a **FIRESTOP—SPACER** properly inserted and fastened.

4. The CHASE TOP is constructed as a flat or contoured cover, of metal or other non-combustible material, with width and length to suit the Chase dimensions. Its outer edge must have a down-turned flange of not less than 2" height. Careful attention to collar size in Fig. 2 is recommended-note 2" collar fabrication of single, or multiple chimney CHASE TOPS are available. Write for Vega Drawing Package #5.)



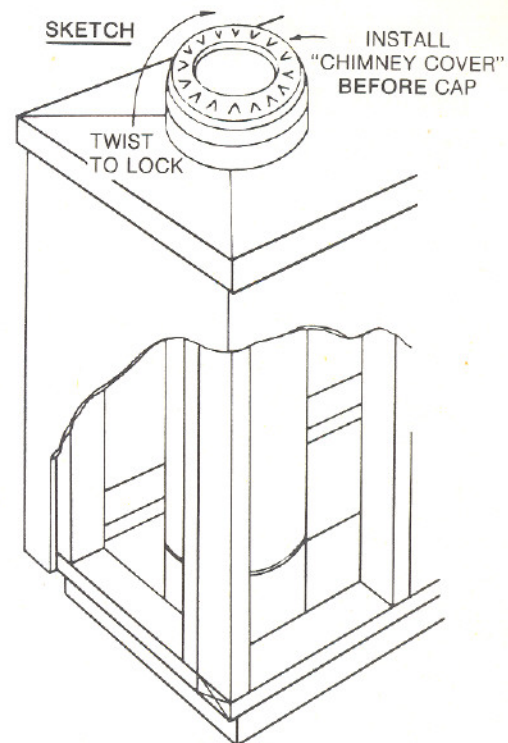
ASSEMBLY AND CONSTRUCTION DETAILS

One typical installation is illustrated below. A **Sketch**, an **End View** and a **Curb Detail** define the methods used---in this instance, the **CHASE** is constructed of ordinary 2 x 4 lumber, covered with an exterior-grade sheathing material, and mounted on a typical curb for flat roof. One or several chimneys might be involved.

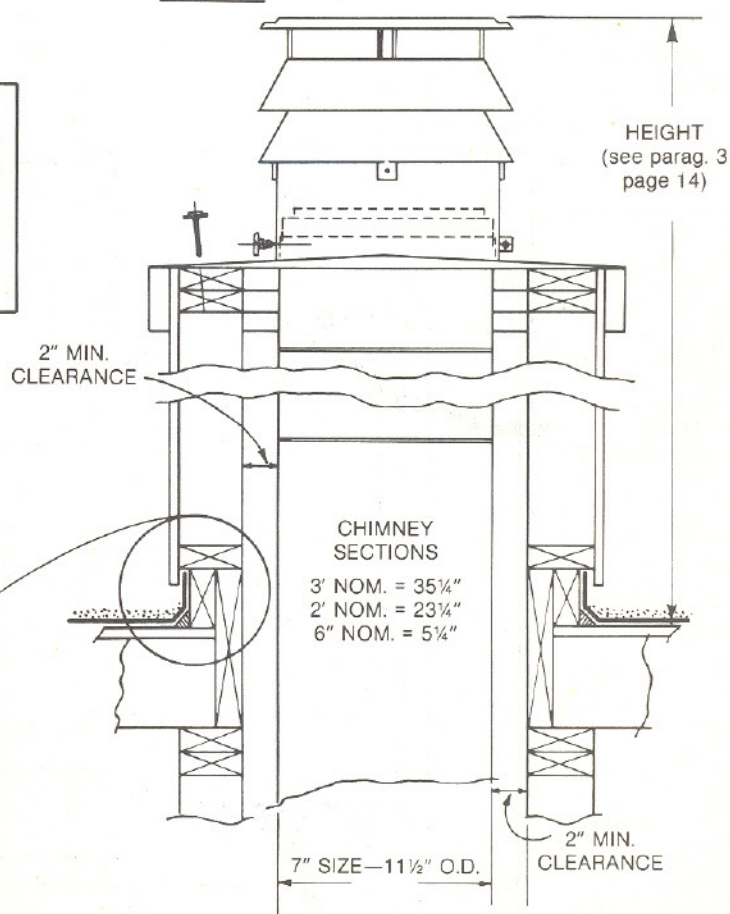
TERMINAL CAP is installed after Chimney Cover (see at left). With Cap in position on Chase Top Collar, tighten the locking bolt on 8" Cap Collar. Install the two 1" screws supplied so that they penetrate Cap, Chase Top Collar and Chimney Section.

CHASE TOP, normally of 24-ga. galvanized steel, or heavier, has collar and corners soldered watertight. Fasten by nailing down into Chase, using appropriate flashing nails with waterproof-sealed heads. There should be a slight crown built into large Chase Tops.

CURB DETAIL will vary for roof types and local practice. For sloped roof, or for installation straddling ridge, curb may be omitted and conventional flashing practice employed.



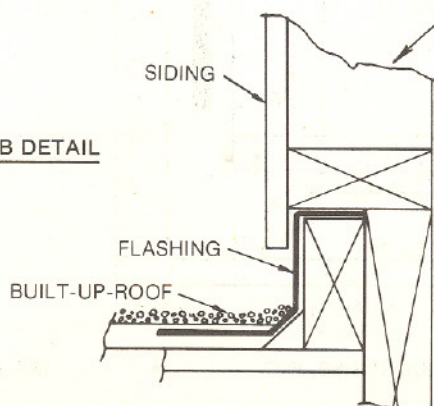
END VIEW



— WARNING —

These Directions (for **CHASE**, **CHASE TOP**, and **TERMINAL CAP**) have been carefully established to permit wide latitude in the employment of chase construction and location. However, safety and permanence demand adherence to **REQUIREMENTS** clearly stated herein and utilization of good materials installed with care.

CURB DETAIL



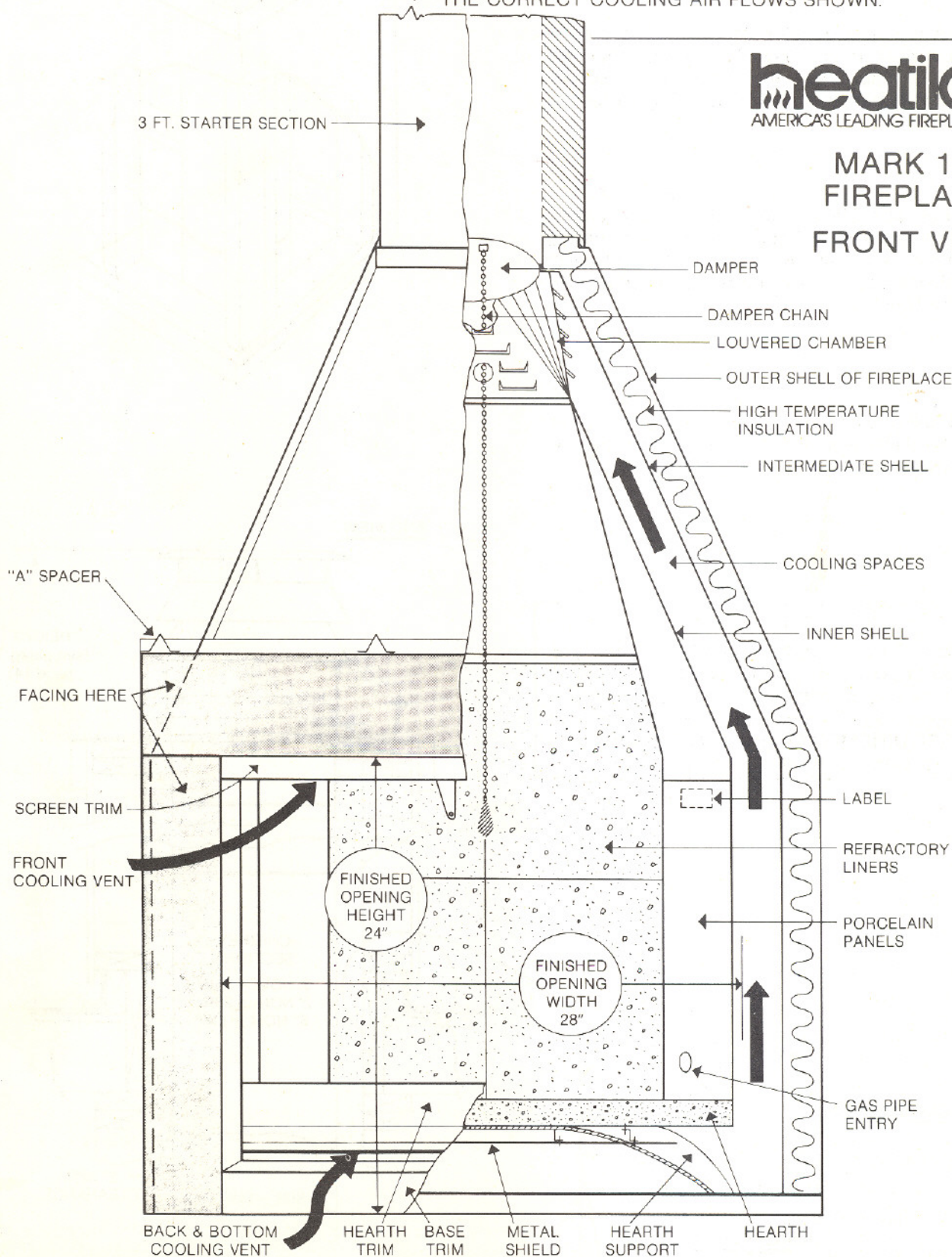
INSTALLATION DIRECTIONS

---WARNING---

As stated on Page 1 (Paragraph 14), take care that you DO NOT BLOCK OR ALTER IN ANY WAY THE COOLING AIR ENTRIES shown below by bold arrows (beneath hearth and along the top of fireplace screen). Also, INSTALL ONLY GLASS DOOR ASSEMBLIES MANUFACTURED BY VEGA INDUSTRIES, INC., WHICH ARE PLANLY DESIGNATED AS APPROPRIATE AND SAFE FOR YOUR MODEL FIREPLACE--- ONLY THESE SETS ARE DESIGNATED AND TESTED TO MAINTAIN THE CORRECT COOLING AIR FLOWS SHOWN.

heatilator®
AMERICA'S LEADING FIREPLACE SYSTEMS

MARK 123 FIREPLACE FRONT VIEW



HEATILATOR FIREPLACE

Form 9900-0015 25M 278T

A DIVISION OF VEGA INDUSTRIES, INC.

MT. PLEASANT IOWA 52641

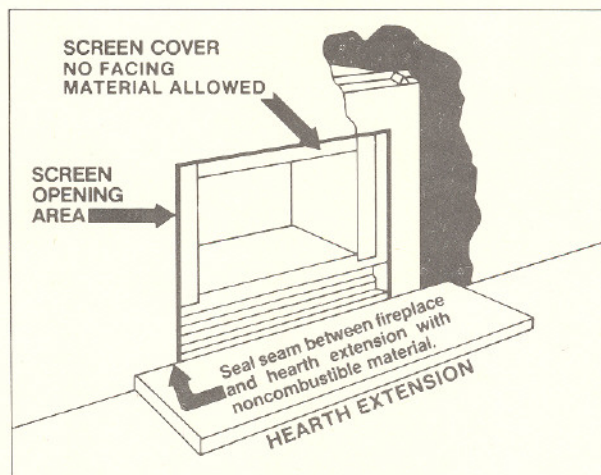
PRINTED IN U.S.A.

MARK 123 INSTALLATION DIRECTIONS REVISIONS MODELS 3028 AND 3034

FINISHING YOUR FIREPLACE:

Refer to Page 1, Paragraph 14 and
Page 4 - FACING MATERIAL

If you plan on installing a glass door, refer to following illustration for proper placement of non-combustible facing material.



NOTE: FACING MATERIAL MUST NOT PROJECT WITHIN THE SCREEN OPENING AREA. ALSO DO NOT COVER THE SCREEN COVER.

HEARTH EXTENSIONS:

Refer to Page 1, Paragraph 12 and
Page 4 - HEARTH EXTENSIONS

A hearth extension must be used. Catalog No. 3900 is available for this purpose. The hearth extension must extend at least 16" in front of and 8" on either side of fireplace opening.

WHEN THE FIREPLACE IS INSTALLED ON A COMBUSTIBLE FLOOR, a Hearth Extension must be employed to protect the floor in front of and on either side of the opening.

HEARTH EXTENSION and entire fireplace may be recessed into the floor, installed on the sub-floor or finished floor, or raised on a suitable platform. If recessed or raised, provide a level surface strong enough to support the fireplace, chimney and Hearth Extension.