

Alpine Corner Cabinet for CF230E, CF260E,
CF550E, CF750E, SILH30E, SILH50E, SILH60E,
QV26E, QV32E (110/120 VAC only)



Assembly / Installation Guide

PLEASE READ

These instructions apply only to the cabinetry and facing material that will surround the firebox. **PLEASE SEE THE FIRE-PLACE MANUFACTURER'S INSTALLATION INSTRUCTIONS TO ENSURE THAT ALL CLEARANCE AND INSTALLATION REQUIREMENTS ARE BEING MET.**



CALL US FIRST

DO NOT RETURN TO THE STORE

For immediate help with assembly, or for
additional product information, call our
toll-free number:

888.880.0192

Warning !!

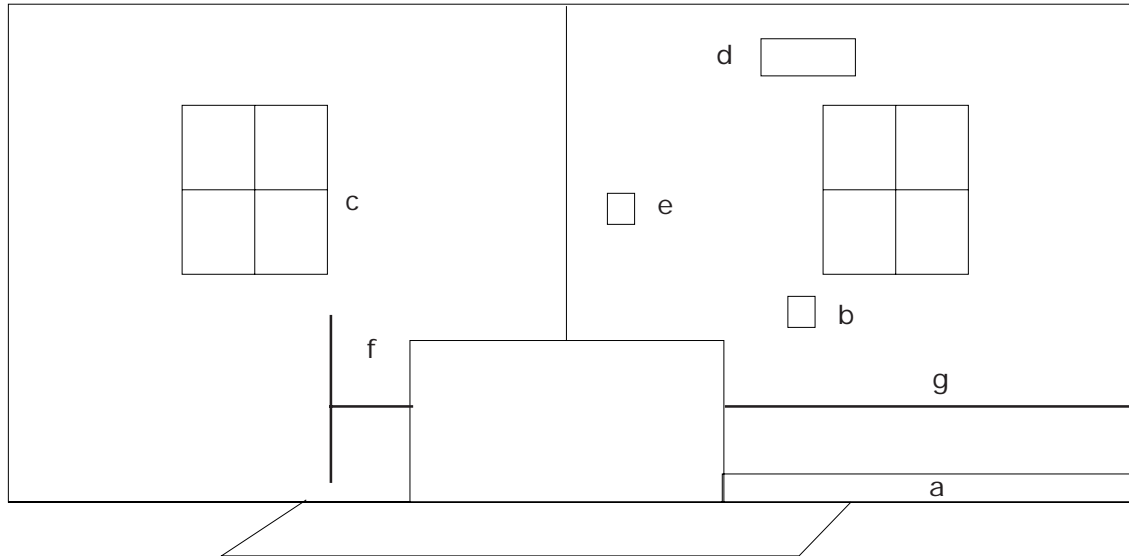
- The Alpine cabinet is for use with **ELECTRIC** fireplaces wired for 110/120 volts only. This cabinet **SHOULD NOT** be used with 208/220/240 wiring applications or with gas or woodburning fireplaces.

Warning !!

- Improper installation, adjustment, can cause injury or property damage. For assistance or additional information, consult a qualified installer, service agency, or the gas supplier.
- Comply with all minimum clearances to combustibles as specified in firebox manual. Failure to comply may cause house fire.

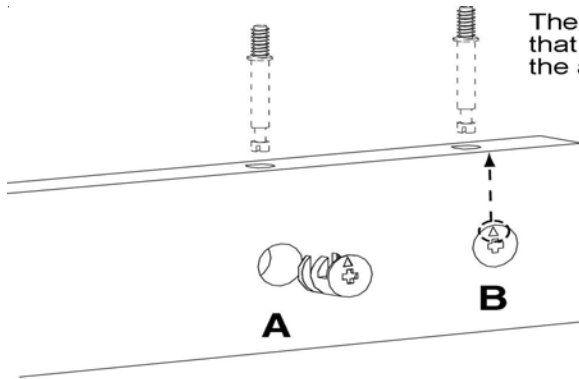


The walls and floor in the area of the installation should be clean, plumb and level. Any major deviation should be remedied before installing either the firebox or the cabinet.



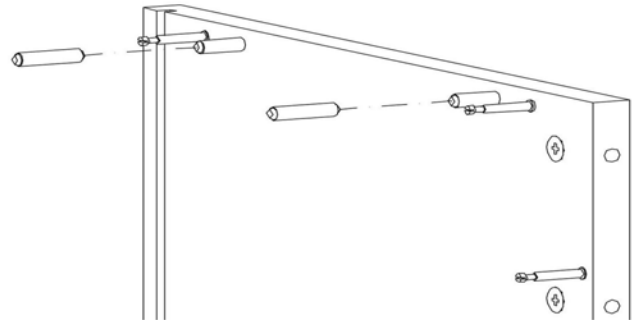
Above is a diagram of issues that may prevent the installation of wood products around a firebox:

- a. base molding
- b. electrical outlet or firebox switch
- c. distance to windows
- d. return air vent
- e. cable outlet or electrical outlet installed
- f. firebox centered to windows
- g. firebox not centered to walls

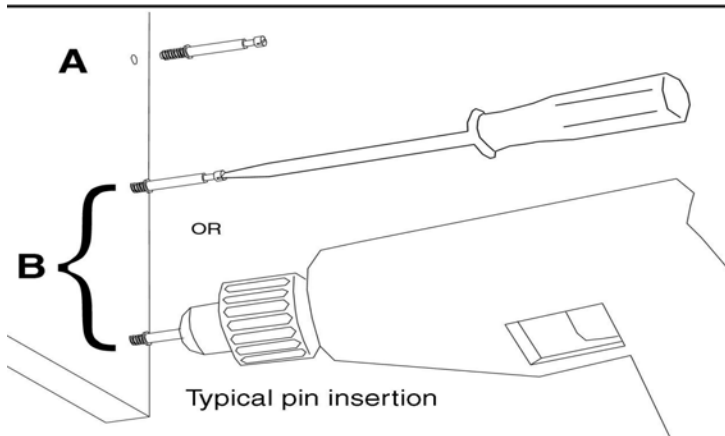


Typical cam insertion

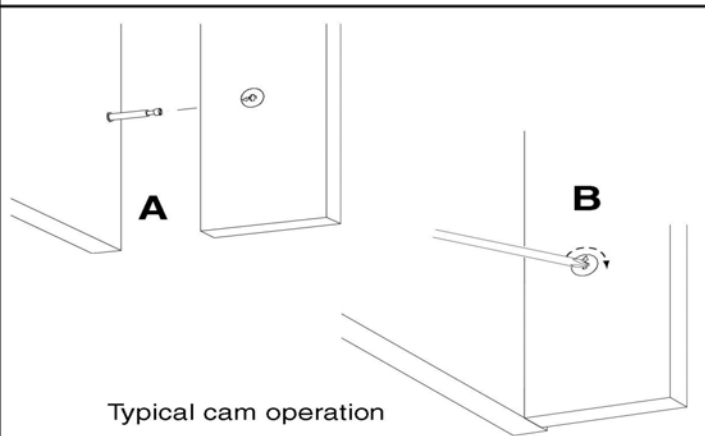
These four panels show operations that will be repeated throughout the assembly of the cabinet



Typical dowel insertion



Typical pin insertion

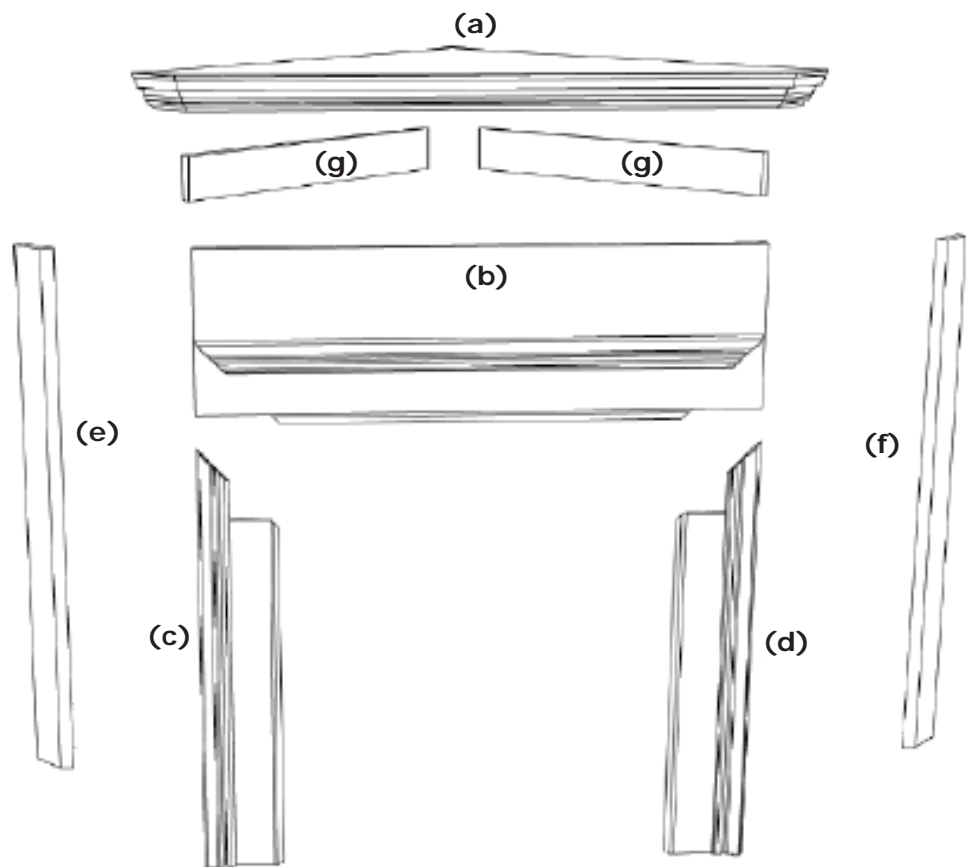


Typical cam operation

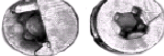



Parts List and Diagram

CABINET PARTS:

- 1 Top Assembly (a)
- 1 Breastboard Assembly (b)
- 1 Left leg (c)
- 1 Right leg (d)
- 1 Left return (e)
- 1 Right return (f)
- 2 ledger boards (g)



Hardware Kit Includes:

- 4 Cam 
- 2 Double head minifix 
- 6 26mm Confirmat bolts 
- 2 1 1/4" drywall screws 
- 4 Wood dowel 
- 4 3" drywall screws 

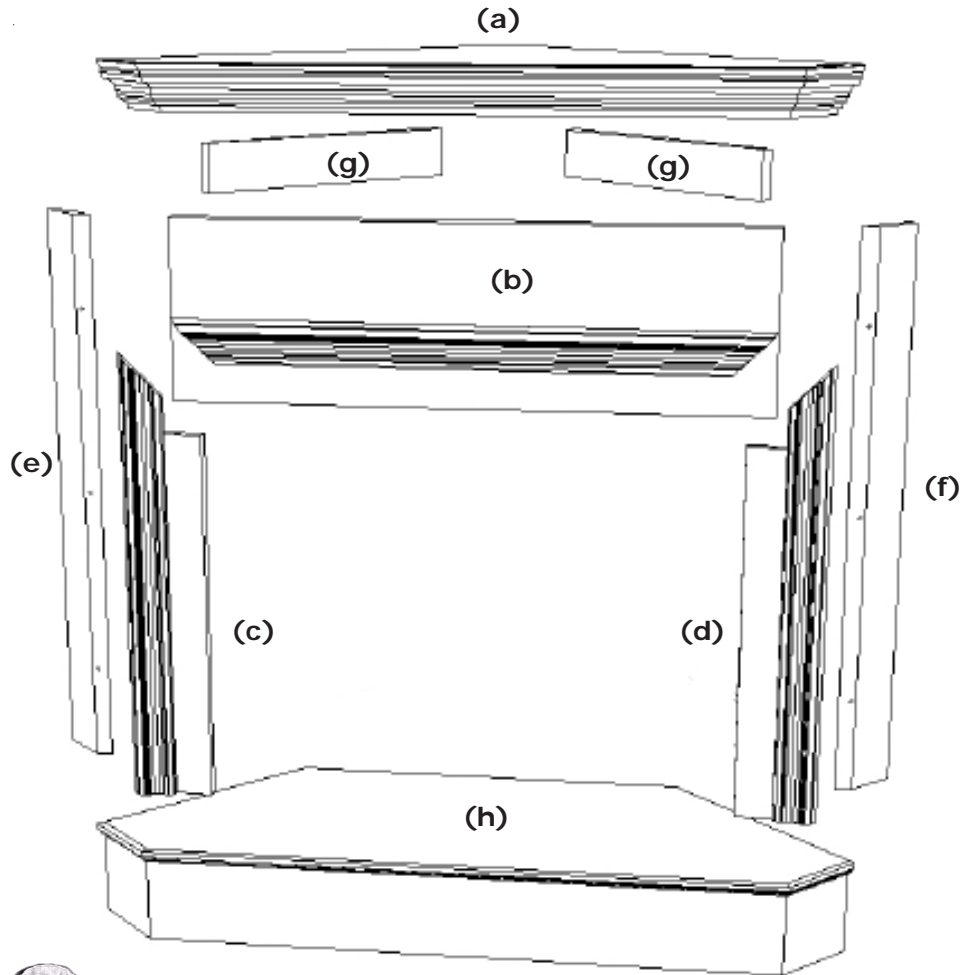
Tools and supplies needed:

- #2 Philips screwdriver
- Portable Screw gun
- Medium straight bit screwdriver







Parts List and Diagram

CABINET PARTS:

- | | |
|------------------------|-----|
| 1 Top Assembly | (a) |
| 1 Breastboard Assembly | (b) |
| 1 Left leg | (c) |
| 1 Right leg | (d) |
| 1 Left return | (e) |
| 1 Right return | (f) |
| 2 ledger boards | (g) |
| 1 hearth base | (h) |



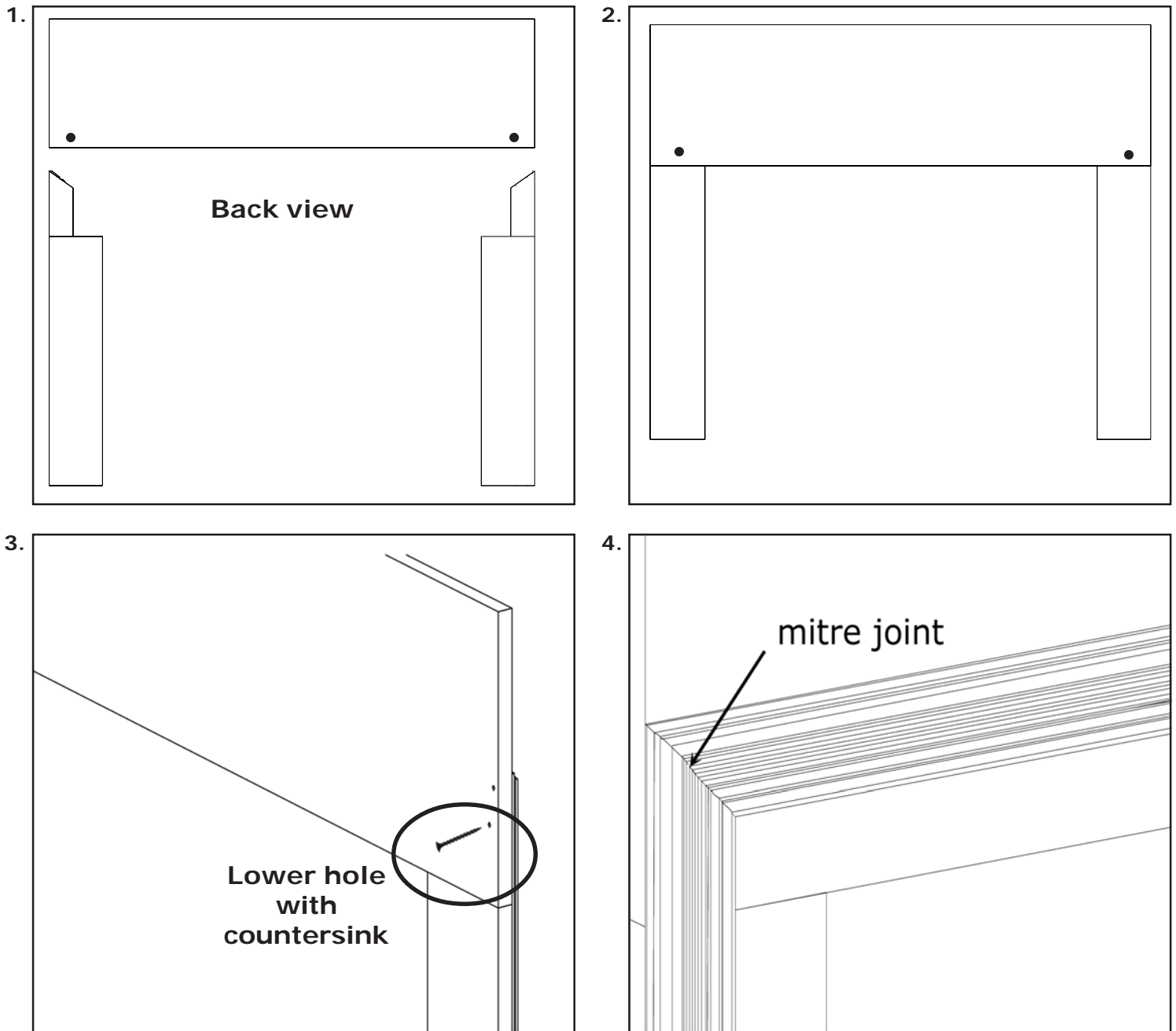
Hardware Kit Includes:

- | | |
|-------------------------|---|
| 4 Cam |  |
| 2 Double head minifix |  |
| 6 26mm Confirmat bolts |  |
| 2 1 1/4" drywall screws |  |
| 4 Wood dowel |  |
| 4 3" drywall screws |  |

Tools and supplies needed:

- #2 Philips screwdriver
- Portable Screw gun
- Medium straight bit screwdriver

Assembly steps



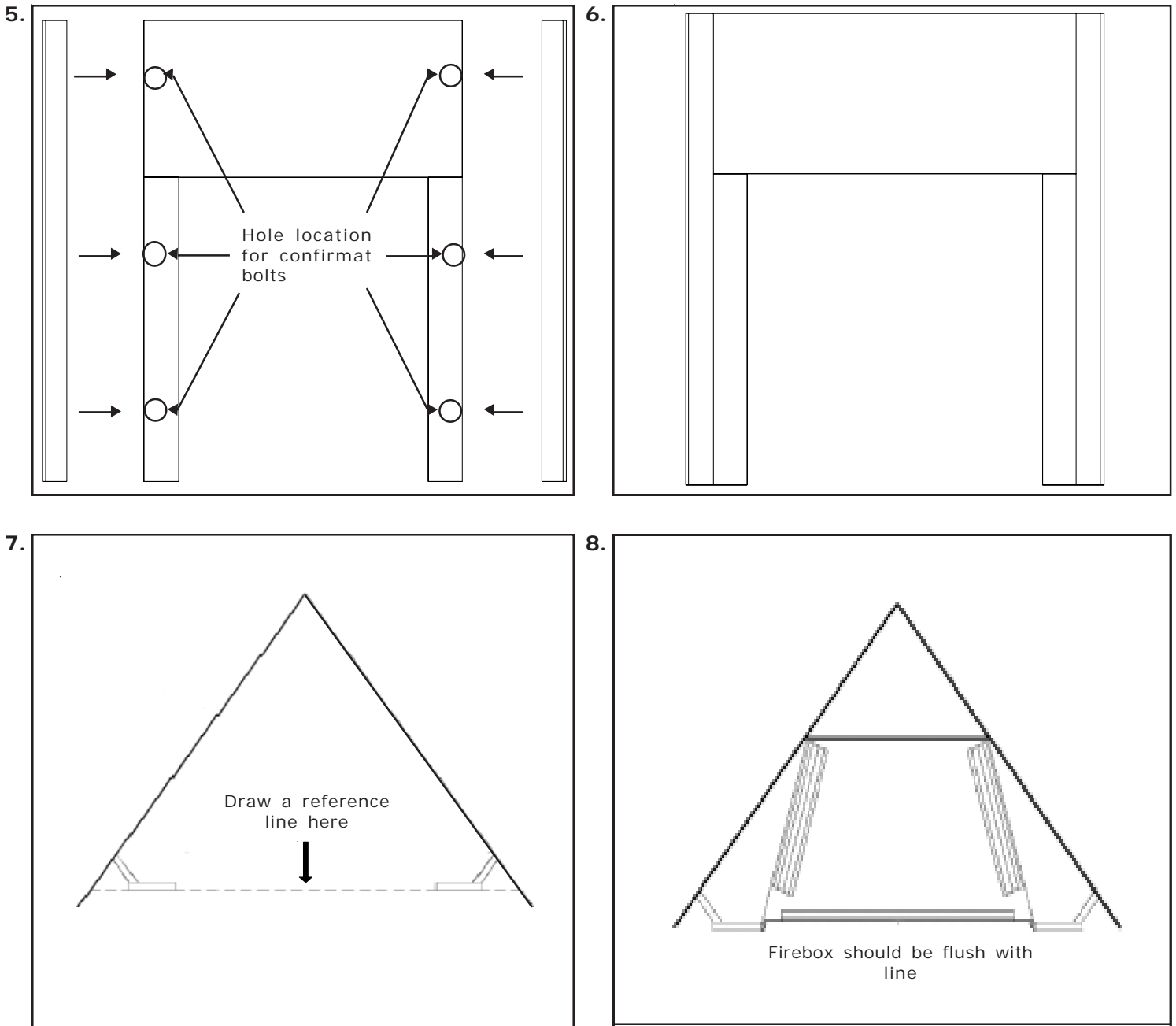
1. Attach legs to breastboard and tighten cams. (Fig. 1@2)

2. Insert (1) 1 1/4" drywall screw in the lower pre-drilled hole of the breastboard, screwing into upper corner of molding. (Fig. 3)

3. Flip cabinet over and inspect miter joint. Make sure that it is tight. (Fig. 4)

Note: Lay cabinet face flat on a clean floor with the backside facing up.

Assembly steps



5. Insert (3) confirmat bolts into each return. Match up returns to pre-drilled holes on breastboard and leg assembly.

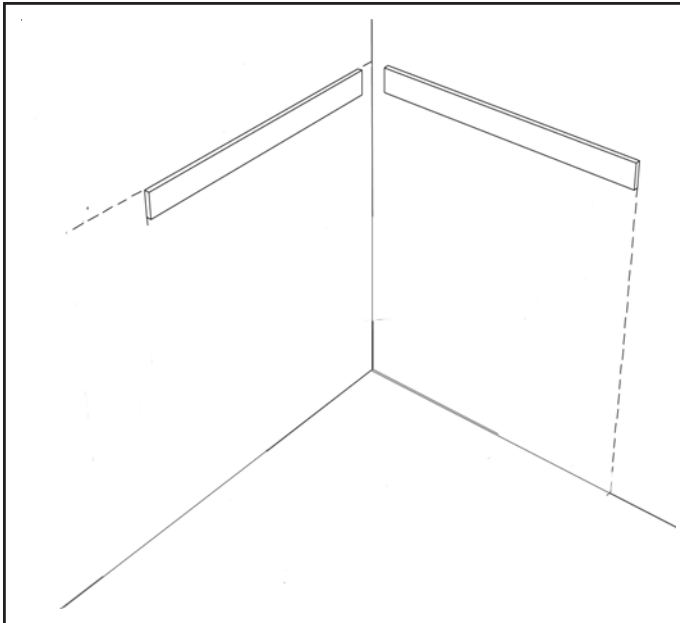
6. Attach returns to breastboard and legs and screw tight.

Note: If your cabinet is for a CF550E, CF750E, SILH50E, SILH60E, or QV32E, please continue with steps (7) through (12). If you have a cabinet for a CF230E, CF260E, SILH230E OR QV26E, proceed to step (13).

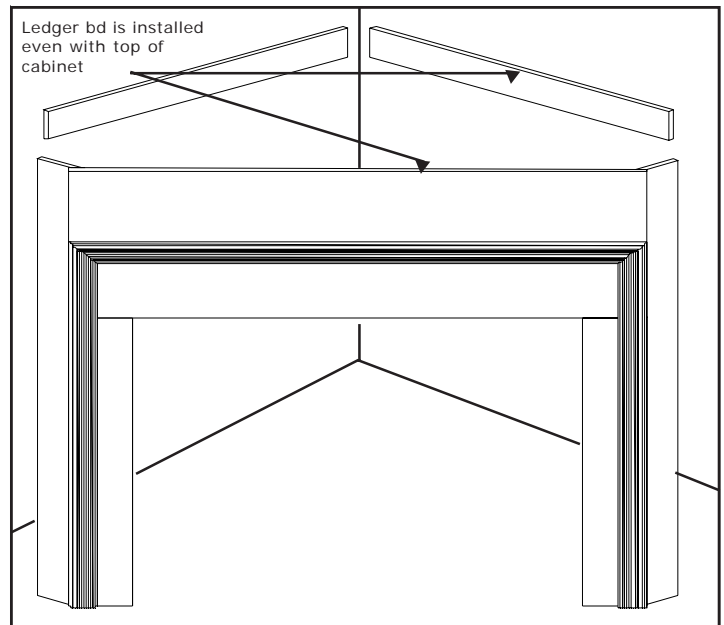
7. Set the cabinet over the firebox, checking that returns strike the walls at equal distances from the corner. Draw a reference line to check position of firebox relative to cabinet. The cabinet face should be flush with firebox face. (see figure #8) Place fireplace in corner and make electrical connections. Be sure to consult your local electrical codes regarding the location of the electrical outlet.

Assembly steps

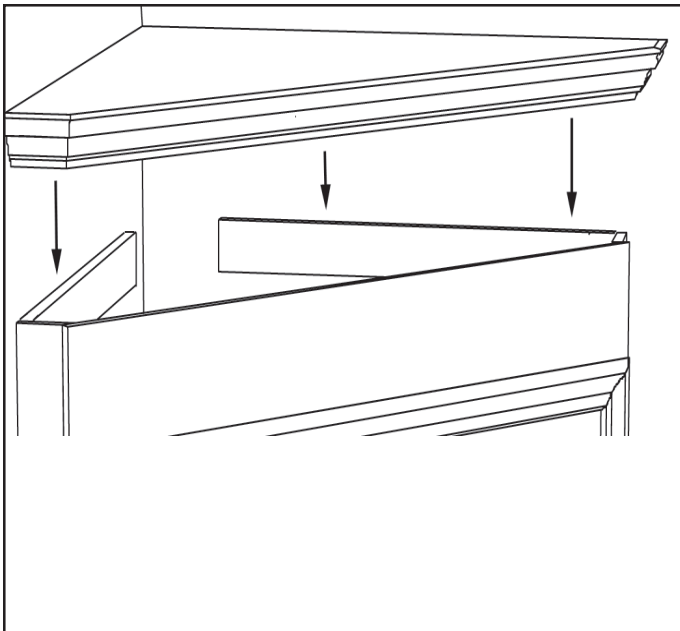
9.



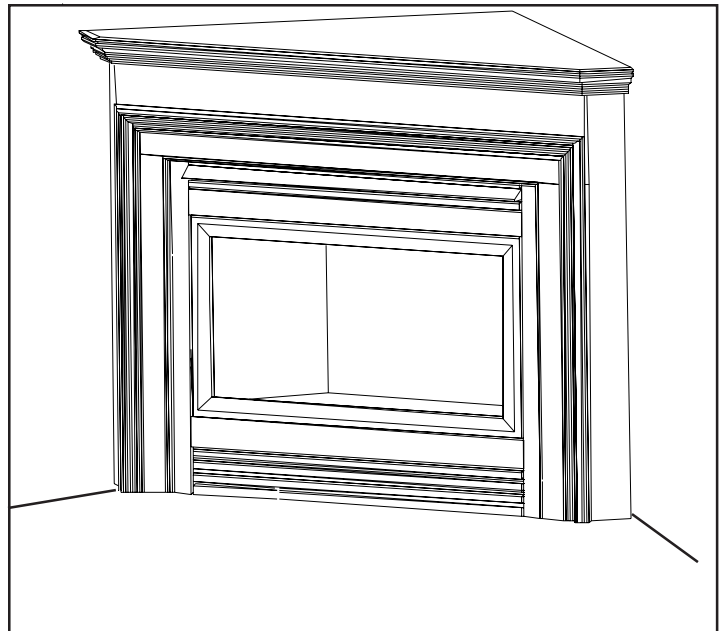
10.



11.



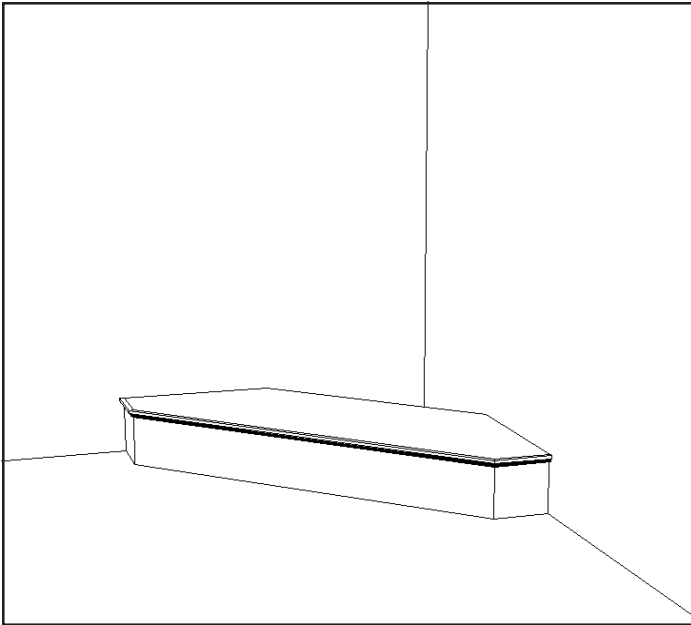
12.



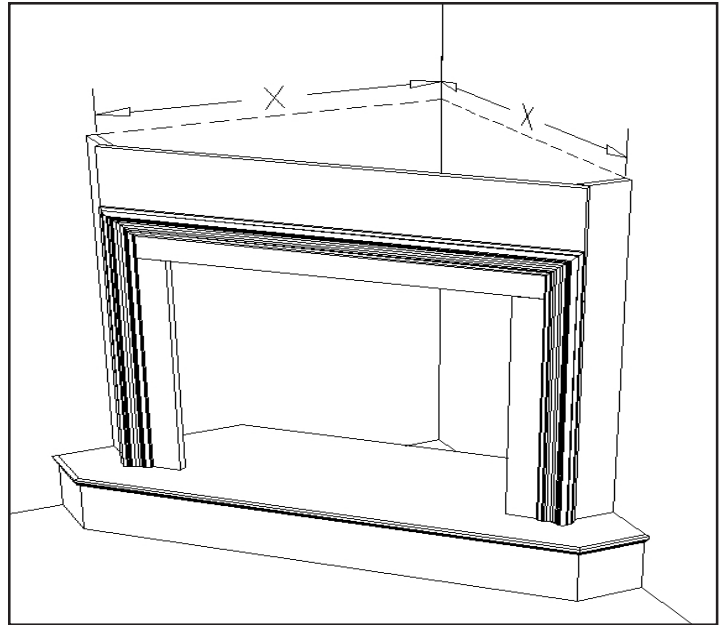
9. Using the height of the cabinet (see figure #10), install ledger boards into wall studs using (2) 3" drywall screw per ledger board. Make sure they are level and flush with tops of returns.
10. Attach top to cabinet by sliding top over cabinet onto ledger strips. If the corner of the room is not square, shaping the top of cutting into the drywall may be necessary. Nail back edge of top to ledger boards, drilling first if necessary.
11. Slide fireplace into cabinet until rear surface of edge flange contacts the face of cabinet. Be sure to plug in the fireplace. Installation is complete. (see figure #12)

Assembly steps

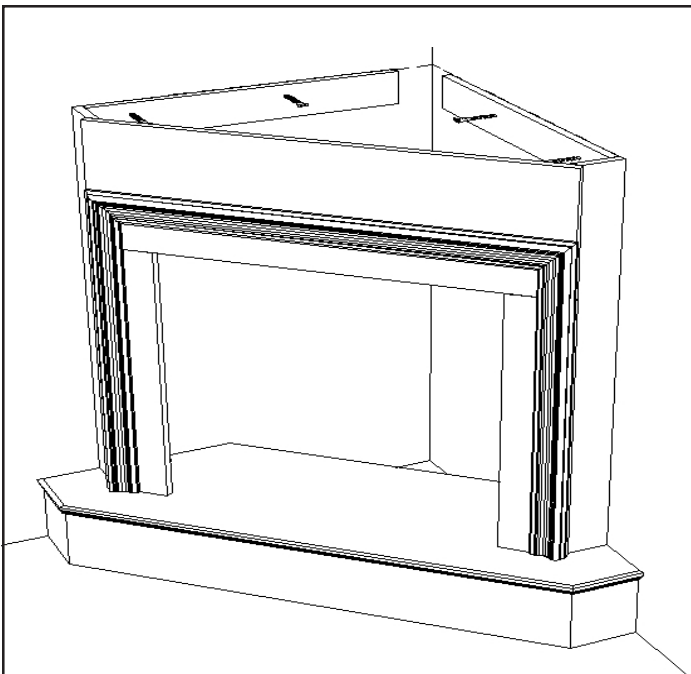
13.



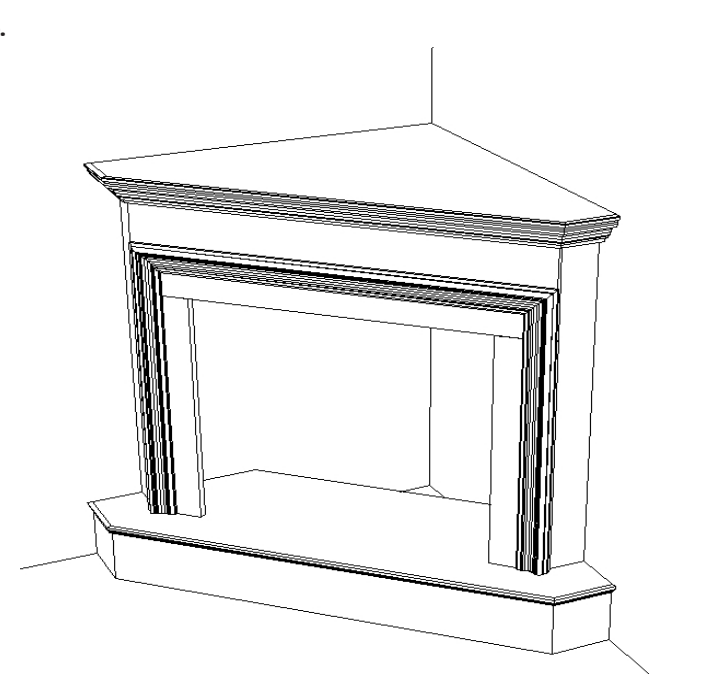
14.



15.



16.



13. Place the hearth base in the corner so that it meets both walls equidistant from the corner. (see figure #13) Set the front frame on the base with returns equidistant from the corner. Draw a level line from the top of the returns to the corner on each wall. (see figure #14)
14. Install ledger boards into wall studs using (2) 3" drywall screw per ledger board. Make sure they are level and flush with tops of returns. (see figure #15)
15. Attach top to cabinet by sliding top over cabinet onto ledger strips. If the corner of the room is not square, shaping the top of cutting into the drywall may be necessary. Nail back edge of top to ledger boards, drilling first if necessary.
16. Slide fireplace into cabinet until rear surface of edge flange contacts the face of cabinet. Be sure to plug in the fireplace. Installation is complete.



Fireside Furnishings, a brand of Hearth & Home Technologies Inc.
20802 Kensington Boulevard, lakeville, MN 55044
www.fireplaces.com

Please contact your Fireside Furnishings dealer with any questions or concerns. For the number of your nearest Fireside Furnishings dealer, please call 1-888-880-0192.

-Notes-

CAUTION

DO NOT DISCARD THIS MANUAL



- Important operating and maintenance instructions included.
- Read, understand and follow these instructions for safe installation and operation.
- Leave this manual with party responsible for use and operation.

