

## MONAL-VF Accent Light Kit

This light kit has been tested for use with specific Hearth & Home Technologies products. Check with your local building code agency before you begin installation to ensure compliance with local codes, including the need for permits and follow-up inspections. If you encounter any problems regarding code approvals, or if you need clarification of any of the instructions contained here, contact your Hearth & Home Technologies dealer. For the dealer nearest you, please visit [www.hearthnhome.com](http://www.hearthnhome.com).

**CAUTION! Risk of Cuts, Abrasions or Flying Debris.**  
Wear protective gloves and safety glasses during installation. Sheet metal edges are sharp.

### Introduction

The MONAL-VF has been designed to offer accent lighting for the firebox and logs. This kit is designed to work manually with the light control supplied. The MONAL-VF operates on 120 VAC, 60 Hz power. This is available through the factory installed junction box, located in the controls compartment of the firebox or appliance.

**NOTE:** The light control is not used with some remote control systems.

### Kit Contents:

Compare system components in Figure 1 with the actual parts received. If any parts are missing or damaged, contact your dealer before starting installation. Do not install a damaged light kit.

**CAUTION! Do not install damaged components.**

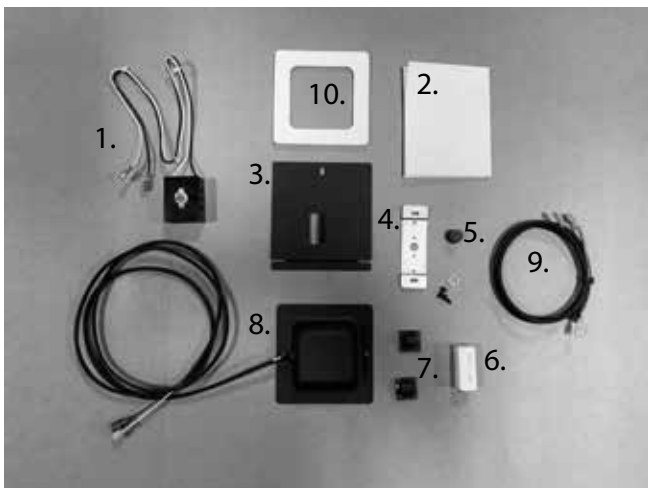


Figure 1. System Contents

- |                         |                              |
|-------------------------|------------------------------|
| 1. Light Control        | 6. 35W Bulb                  |
| 2. Instructions         | 7. Wire Clips (2)            |
| 3. Cover Plate          | 8. Light Socket/Light Box    |
| 4. Wall Box Plate       | 9. Wire Harness              |
| 5. Control Knob and Nut | 10. Gasket                   |
|                         | 11. ACM Adapter (Not Shown)* |

\*Used on IDOL units only

Service Parts	
Part Number	Description
SRV4137-303	Light Socket
SRV4137-142	Light Box
SRV4137-304	Wire Harness
SRV4137-146	Gasket
SRV4121-119	Wall Box Plate
SRV4137-143	Cover Plate
SRV100-510A	Speed Control
SRV78D0007	35W Bulb

### Installation Precautions

The MONAL-VF is tested and safe when installed in accordance with this installation manual. It is your responsibility to read all instructions before starting installation and to follow these instructions carefully during installation to assure maximum benefit from, and safe operation of the accent light.

The accent light is carefully engineered and must be installed only as specified. If you modify it or any of its components, you may cause a fire hazard and will void the WARRANTY. In addition, such action may void the coverage provided by the owner's home insurance.

**CAUTION! All wiring should be done by a qualified electrician and shall be in compliance with local codes and with the National Electric Code ANSI/NFPA NO. 70-current (in the United States), or with the current CSA C22.1 Canadian Electric Code (in Canada).**

### Installation Instructions

**WARNING: Risk of Shock! Turn electrical power off at the circuit breaker before beginning this installation.**

**NOTE: The factory installed junction box in the firebox or appliance must be wired with 110 VAC before installing this kit. See firebox or appliance Installation Instructions.**

### Preparing the Firebox (BUF/ACUF/LCUF Models):

#### Removing Lower Access Panel

1. Remove (2) screws securing Lower Access Panel. See Figure 2.



Figure 2

2. Using a flat screwdriver, lift gently on Lower Access Panel. See Figure 3.



Figure 3

3. Pull Lower Access Panel forward to disengage from firebox bottom, set aside. See Figure 4.



Figure 4

### Preparing the Appliance (IDOL Models):

1. Remove the Screen Frame Assembly and Lower Access Panel by lifting and pulling away from the appliance and set aside. See Figure 5.

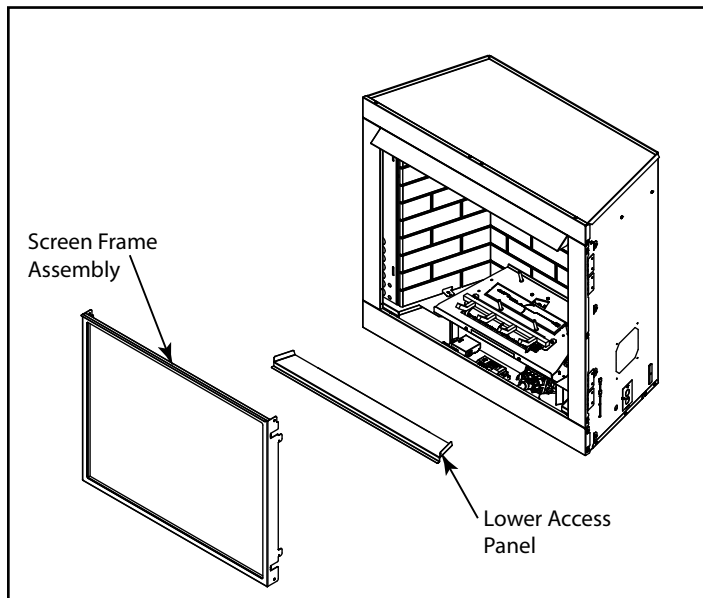


Figure 5

## Removing Hood

1. Remove (2) screws securing the Hood to Columns, one at each end. See Figure 6.



Figure 6

2. Remove (4) screws securing the Hood to Upper Face. Set Hood aside. See Figure 7.



Figure 7

3. Remove (1) screw securing blank cover plate to firebox top, set aside. See Figure 8.



Figure 8

## Removing Rear and Side Access Covers (LCUF models only)

1. Remove (5) screws securing Rear Access Cover to firebox. Lift Rear Access Cover to disengage from firebox bottom. Set cover aside. See Figure 9.

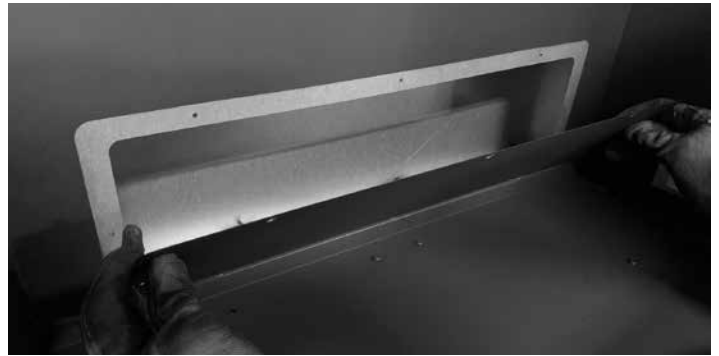


Figure 9

2. Remove (1) screw securing Side Access Cover to firebox. Lift Side Access Cover to disengage from Firebox Bottom. Set cover aside. See Figure 10.



Figure 10

## Accent Light Kit Installation (BUF/ACUF/LCUF/IDOL Models):

1. Feed Light Box Assembly wires through access hole in firebox top. Route wires to the right rear corner of the firebox or appliance. The leading end of the wires should be accessible through lower access. Install bulb, then assemble light box, gasket and cover with (1) screw, as shown. See Figures 11 & 12.



Figure 11

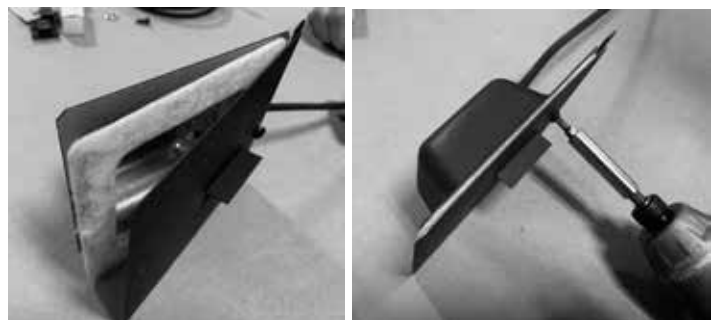


Figure 12

2. Install Light Box Assembly as shown, with (1) screw. See Figure 13.



**Figure 13**

3. Locate the leading end of the wires through lower access hole and pull to center of access area.

#### Installing Light Control

1. Install the Light Control in the lower left corner of the firebox or appliance, behind screen. See Figure 14 and 15.



**Figure 14 (BUF/ACUF/IDOL)**



**Figure 15 (LCUF)**

2. Install Control Nut and Control Knob.

### Electrical Connections (BUF/ACUF/LCUF & IDOL Standing Pilot Models)

1. Connect the Light Control to Junction Box with the wires provided as shown on Standard Wiring Diagram. See Figure 16.

*NOTE: Alternate Wiring Diagrams are shown if locating the Fan and/or Light Control in a remote wall box is desired. See Figures 17, 18 & 19.*

2. Turn the 110-120 VAC service "ON" at the circuit breaker.

### Electrical Connections (IDOL IPI Models)

1. Connect the Blower and AUX Module to Junction Box with the wire harness provided, as shown on Standard IPI Wiring Diagram. See Figure 20.
2. Turn the 110-120 VAC service "ON" at the circuit breaker.

### Recommended Operating Procedures When Variable Light Control is Used

Use the variable Light Control to turn accent light on/off or set the desired light intensity. The accent light may be used when the appliance is on or off.

### Maintenance

Periodically check the firebox and controls compartment. Remove any dust, dirt or obstructions as directed in the appliance Owner's Manual.

### Replacement Parts and Customer Service

Replacement parts and service may be obtained through your dealer.

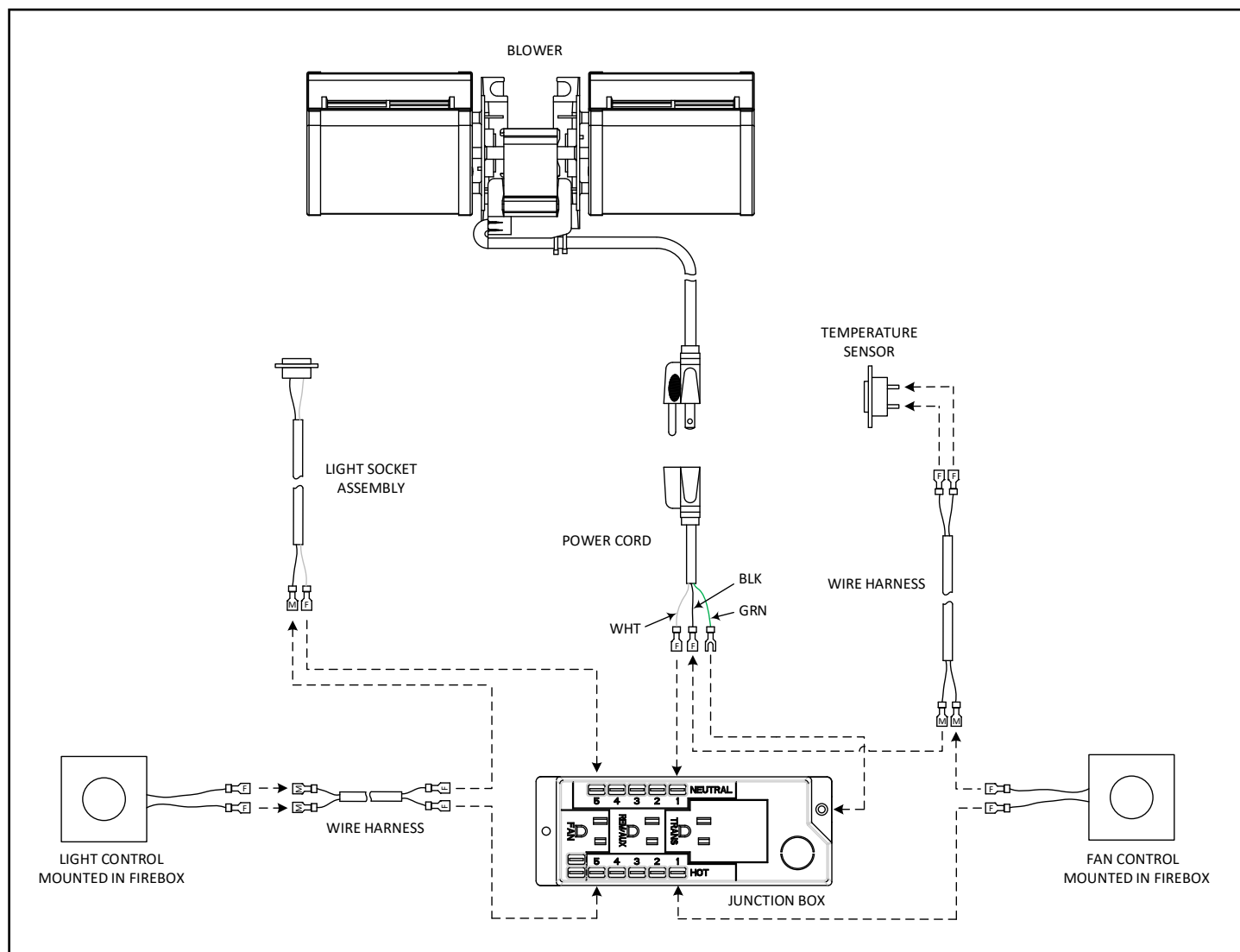


Figure 16 Standard Wiring Diagram (BUF/ACUF/LCUF and IDOL Standing Pilot Models)

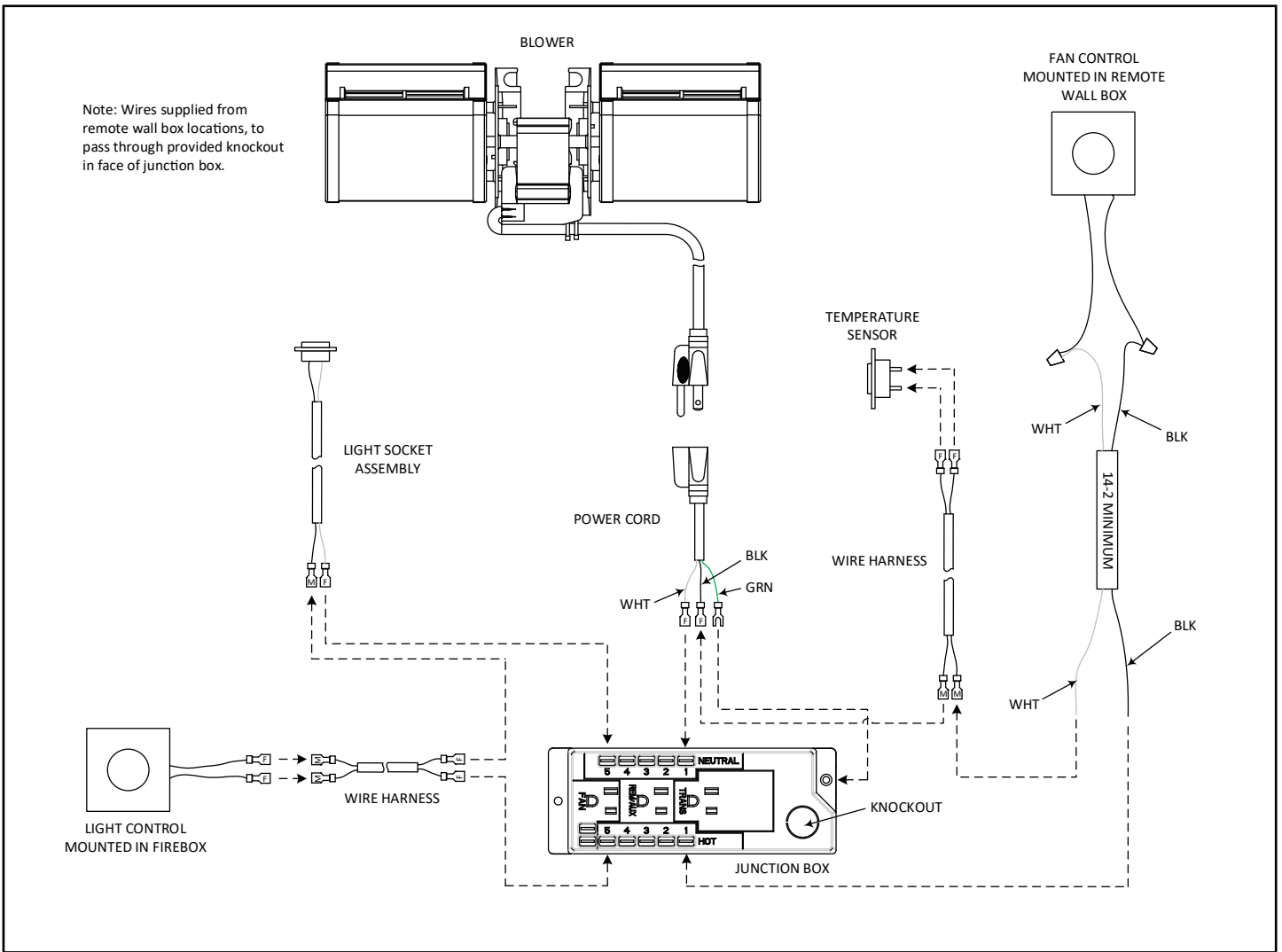


Figure 17 Wiring Diagram - Remote Fan Control (BUF/ACUF/LCUF and IDOL Standing Pilot Models)

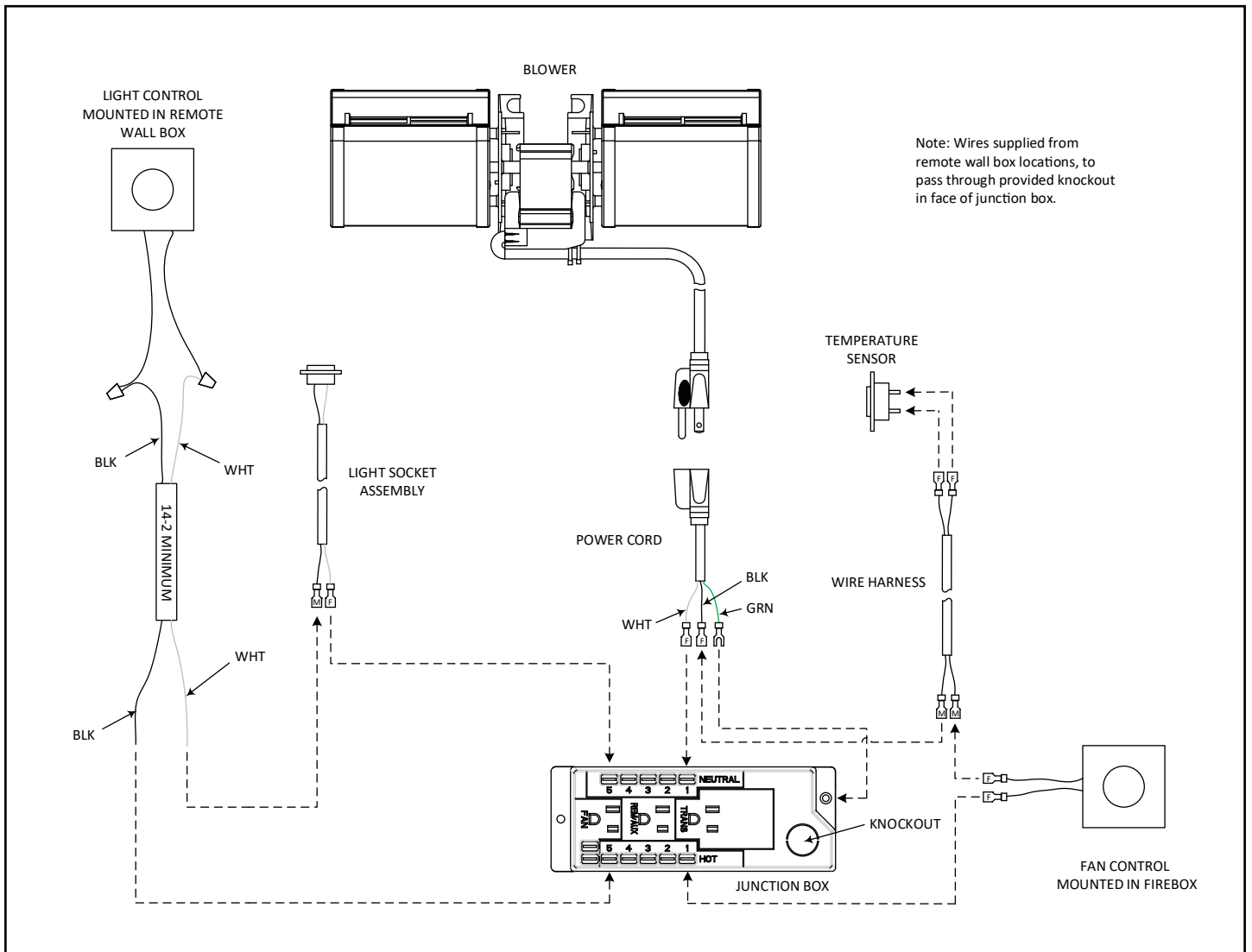


Figure 18 Wiring Diagram - Remote Light Control (BUF/ACUF/LCUF and IDOL Standing Pilot Models)

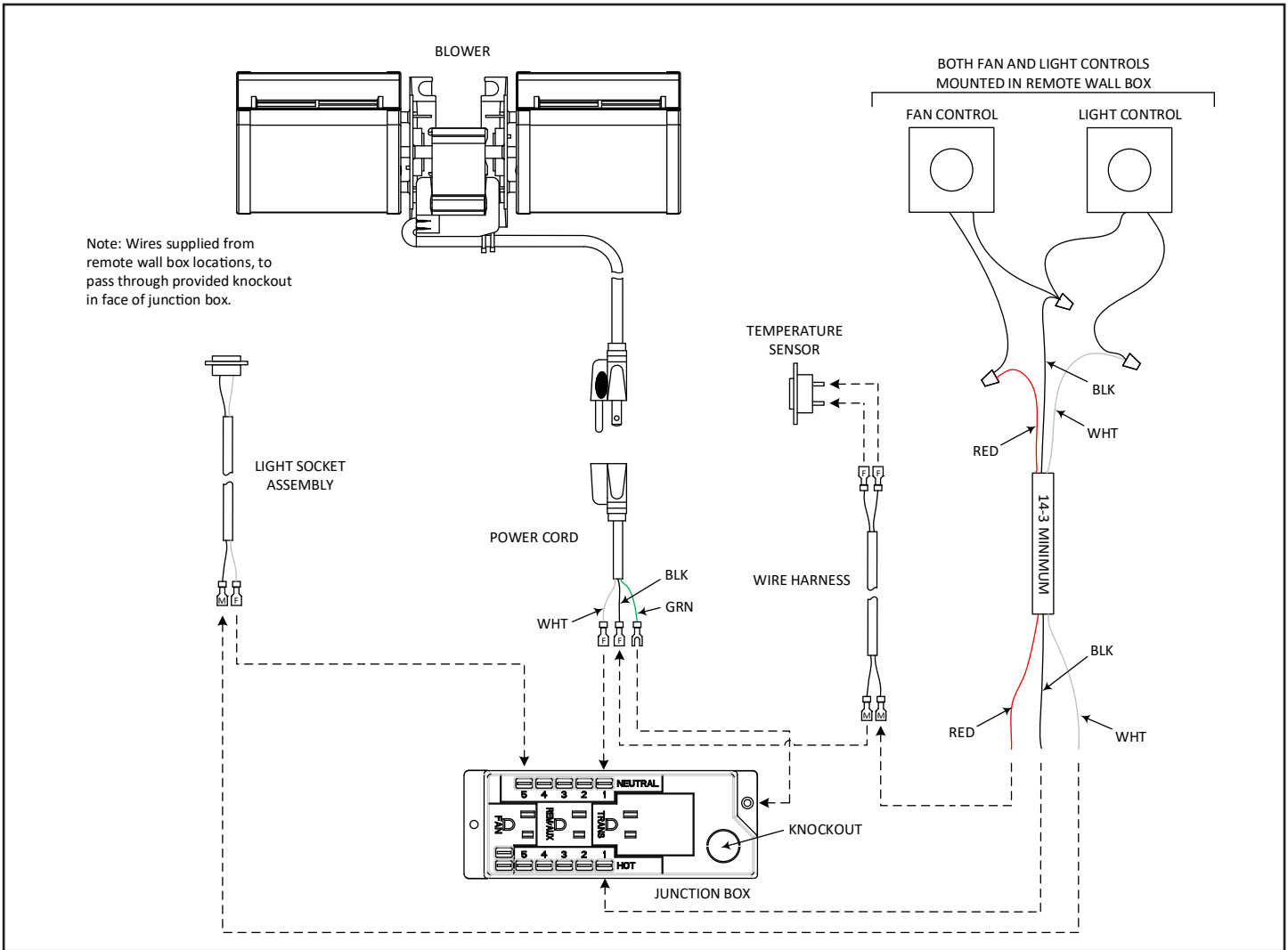


Figure 19 Wiring Diagram - Remote Fan and Light Controls (BUF/ACUF/LCUF and IDOL Standing Pilot Models)



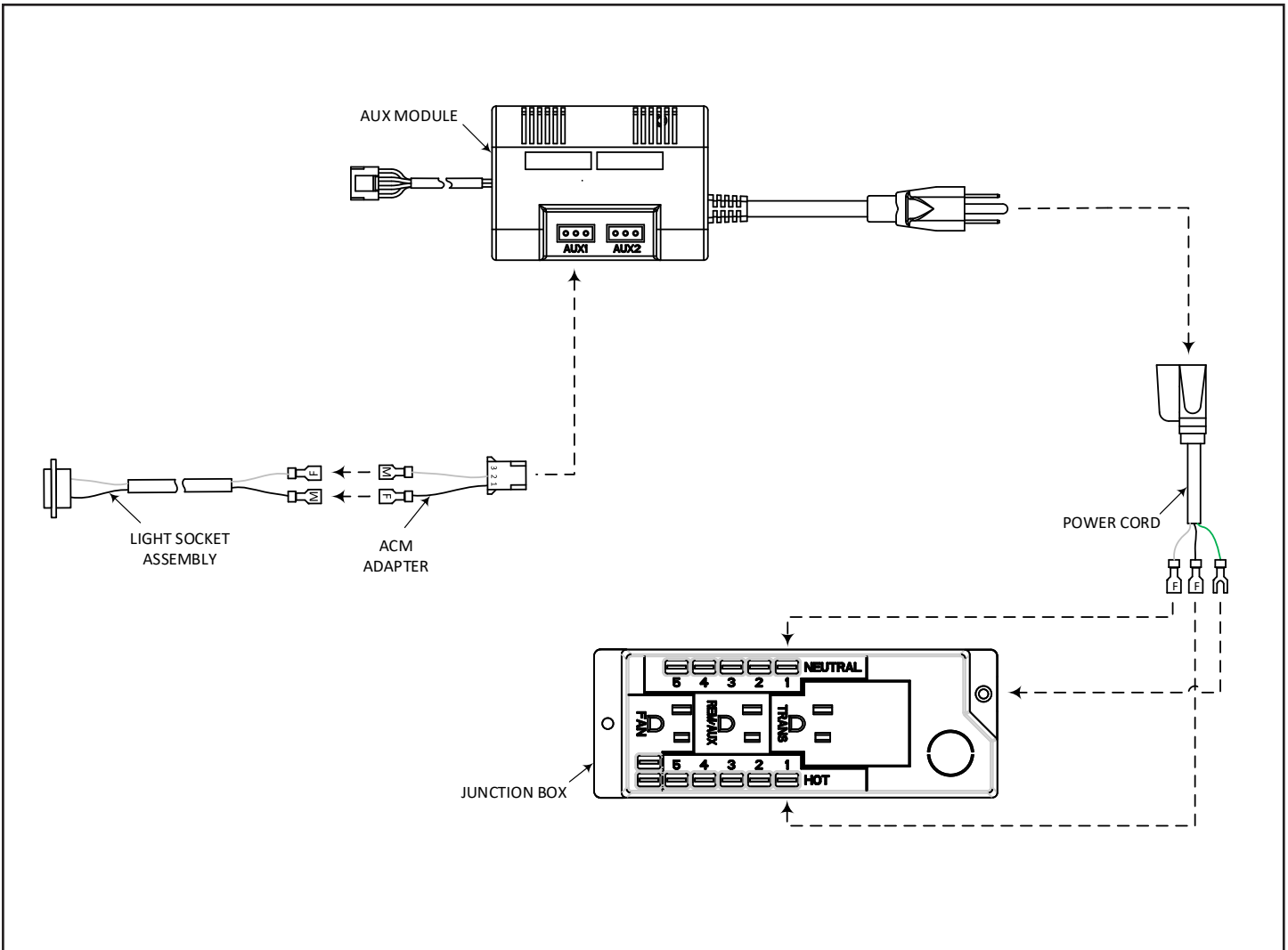


Figure 20 Standard IPI Wiring Diagram (IDOL IPI Models)

Please contact your Hearth & Home Technologies dealer with any questions or concerns. For the location of your nearest Hearth & Home Technologies dealer, please visit [www.hearthnhome.com](http://www.hearthnhome.com).