

**Traditional Logs, Driftwood Logs, Birch Logs**  
**OAKLG-LIN-SM/LG, DWLG-LIN-SM/LG, BIRLG-LIN-SM/LG**  
**Model: PRIMO-II Series**



Leave this manual with party responsible for use and operation.

**CAUTION:** Logs are fragile, handle with care.

**NOTICE:** To simplify the installation process, positively identify each individual log before beginning installation. See Figures 1A - 1F. The individual logs for the Traditional (OAKLG), Driftwood (DWLG) and Birch (BIRLG) log sets will install in a similar manner. The Driftwood logs are featured in the figures. Key log location features are shown in Figure 2. Logs are NOT installed in sequential order.

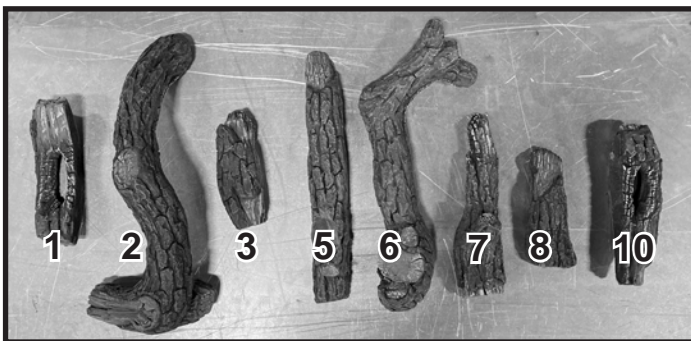


Figure 1A Log Identification - OAKLG-LIN-SM

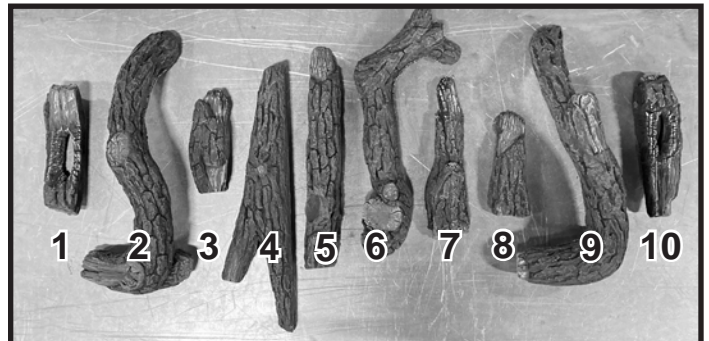


Figure 1B Log Identification - OAKLG-LIN-LG



Figure 1C Log Identification - DWLG-LIN-SM

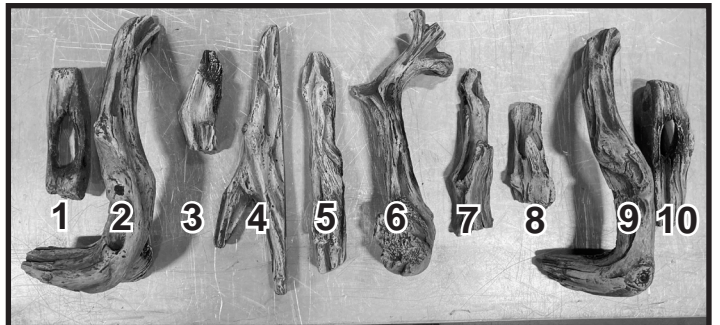


Figure 1D Log Identification - DWLG-LIN-LG

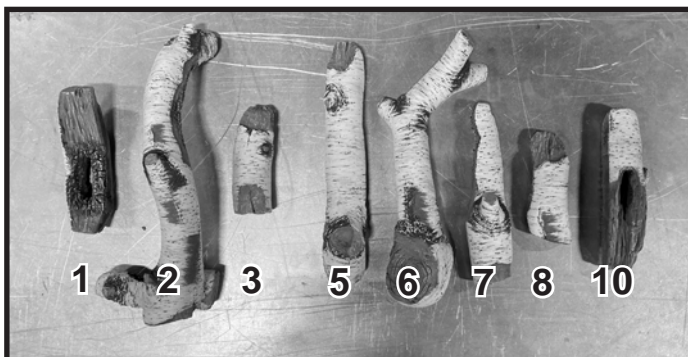


Figure 1E Log Identification - BIRLG-LIN-SM



Figure 1F Log Identification - BIRLG-LIN-LG

**Preparation:** Install log locating pins, included in hardware bag, into all locations as shown in the figures below. Extra log pins are included in manual bag. Log pins are identified alphabetically as shown below. Log pin holes are circular in shape, with the exception of a few rectangular holes, which are shaded in Figures 2A, 2B and 2C. The rectangular holes are only used for placement on See-Through (ST) models and for Single-Sided models that use black glass (BGK) refractory kits. See Figure 2.D.

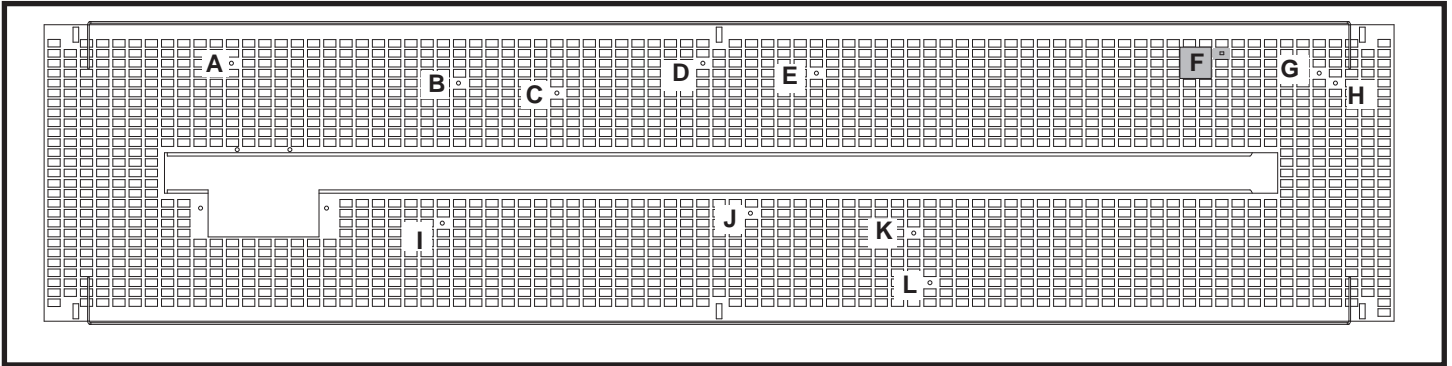


Figure 2A. PRIMO-II-48 / PRIMO-II-48ST Log Pin Placement

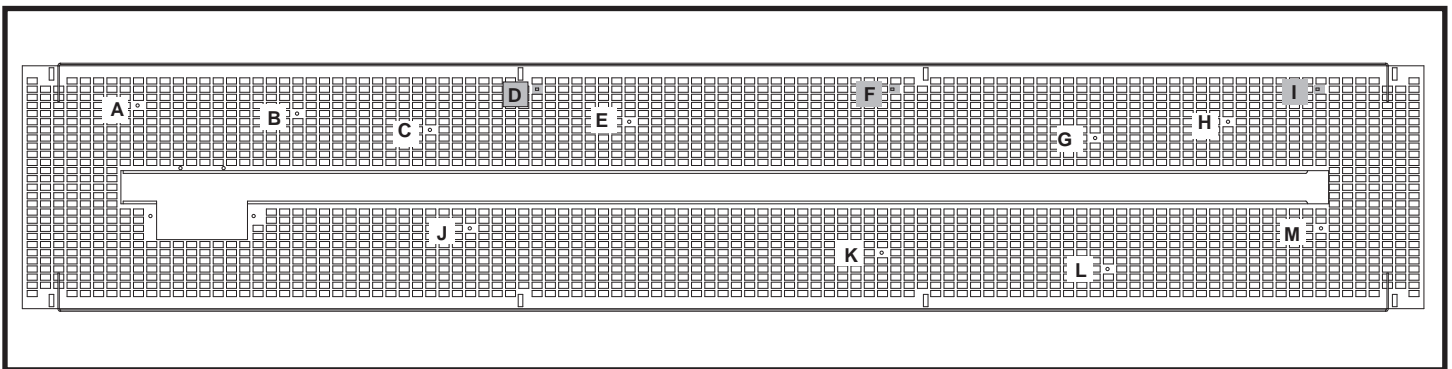


Figure 2B. PRIMO-II-60 / PRIMO-II-60ST Log Pin Placement

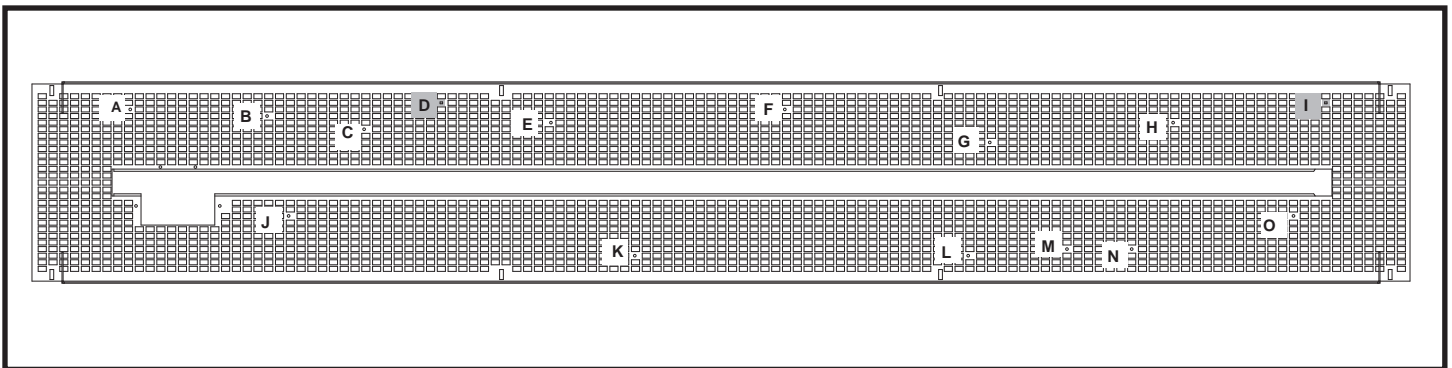


Figure 2C. PRIMO-II-72 / PRIMO-II-72ST Log Pin Placement

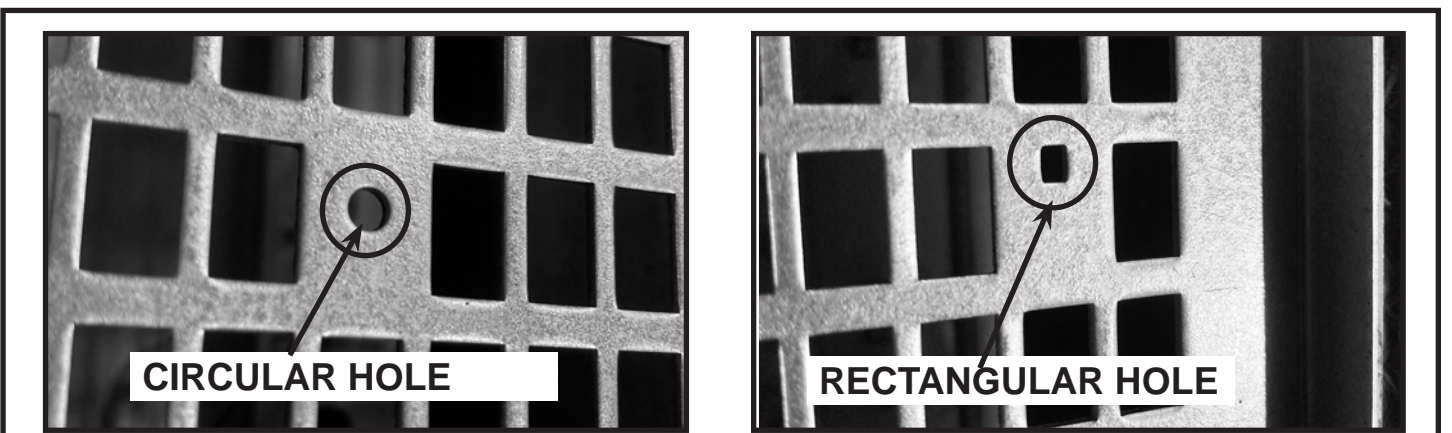


Figure 2D. PRIMO-II Media Tray Log Pin Holes

# Log Installation: OAKLG-LIN-SM / DWLG-LIN-SM / BIRLG-LIN-SM

## Models: PRIMO-II-48, PRIMO-II-48ST

**Log #10:** Place Log #10 in back left of firebox using log pins (A) and (B) for positive placement. Place the right side of Log #10 against log pin (B) and then pivot the left side of Log #10 back to meet log pin (A). See Figure 1.

**Log #3:** Place the left side of Log #3 against log pin (C) and pivot the right side of Log #3 back to meet log pin D. See Figure 2.

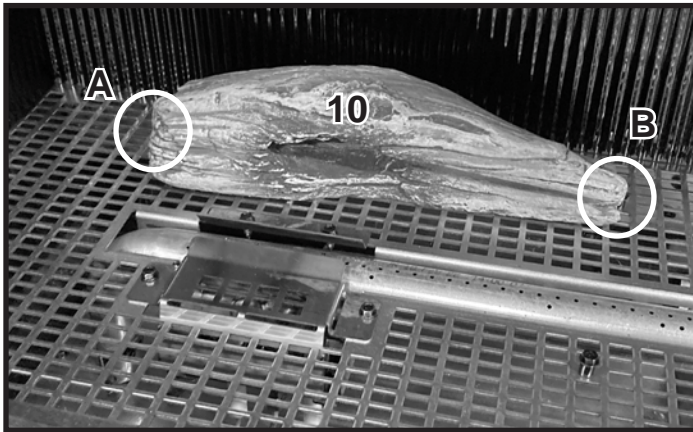


Figure 1 Install Log #10

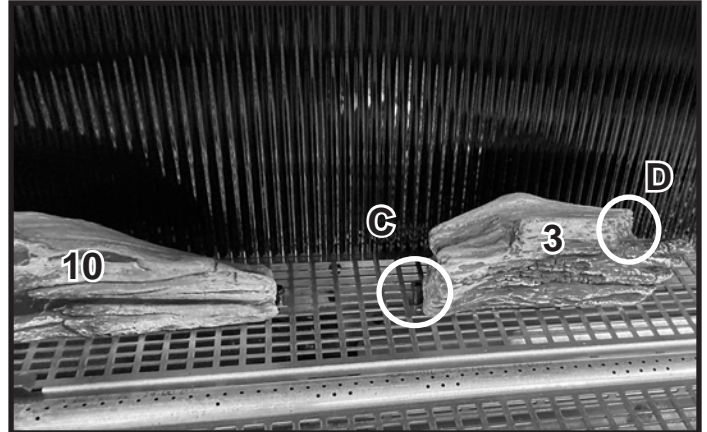


Figure 2 Install Log #3

**Log #5:** Place the left side of Log #5 against log pin (E). For See Through models and those using black glass refractory, pivot the right side back until it contacts log pin (F). See Figure 3. For installations with fiber refractory, the back right side will contact the refractory.

**Log #2:** Place the right side of Log #2 on the flat spot on the left side of Log #3. Pivot the left side forward until it contacts the media tray ledge. See Figure 4.

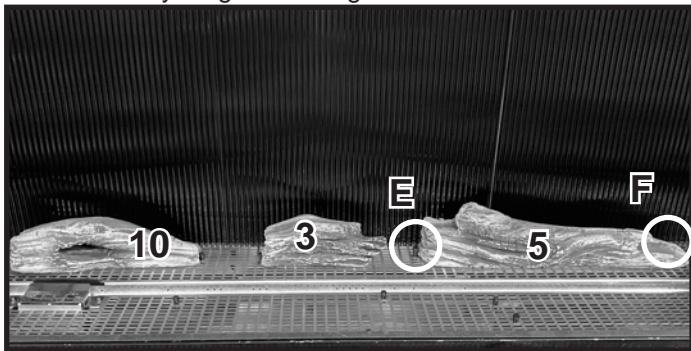


Figure 3 Install Log #5

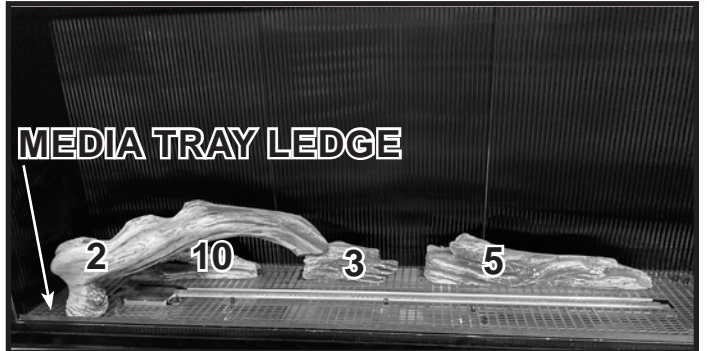


Figure 4 Install Log #2

**Log #8:** Log #8 uses three log pins, J, K and L. Place Log #8 as shown in Figure 5.

**Log #7:** Set the right side of Log #7 on the left side of Log #8. There should be a one inch overlap as noted in Figure 6. Pivot the left side of Log #7 back until it contacts log pin (I.)

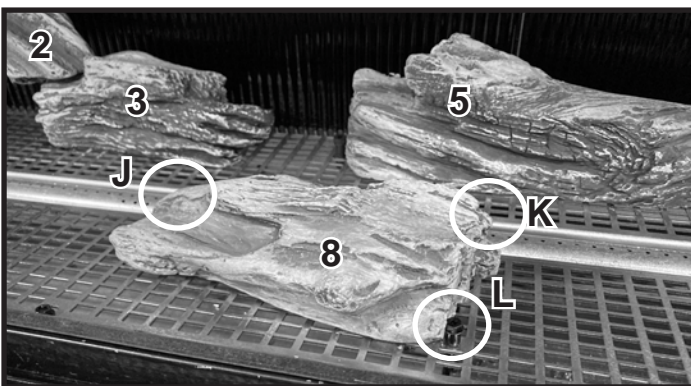


Figure 5 Install Log #8

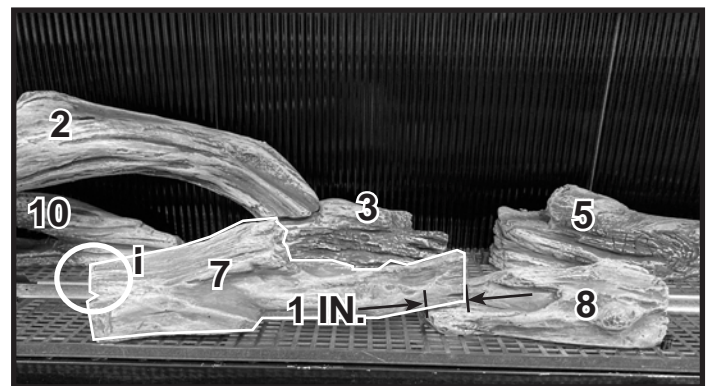


Figure 6 Install Log #7

**Log #6:** Insert the left side support feature of Log #6 into the recess on Log #5. Pivot the right side of the log forward as far as it can go. Ensure the log is stable and fully engaged with Log #5, the supporting log. See Figure 7.

**Log #1:** Place the end of Log #1 against log pins (G) and (H) in the back right corner of the firebox. The log should curve outward as shown. Set the front end of Log #1 on top of Log #6 as shown in Figure 8.

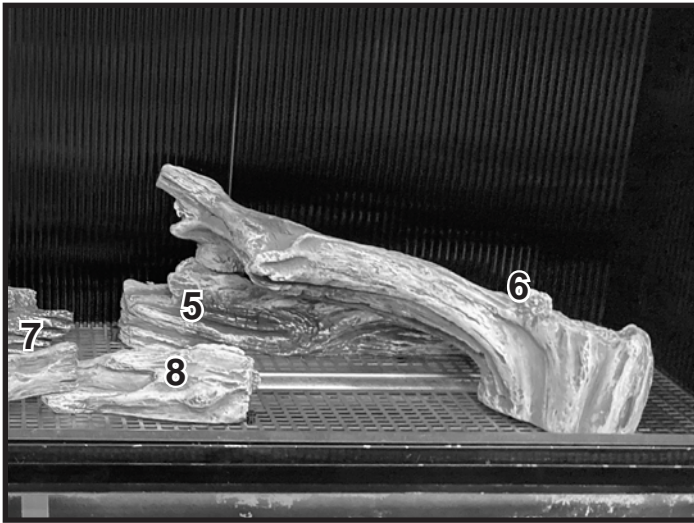


Figure 7 Install Log #6

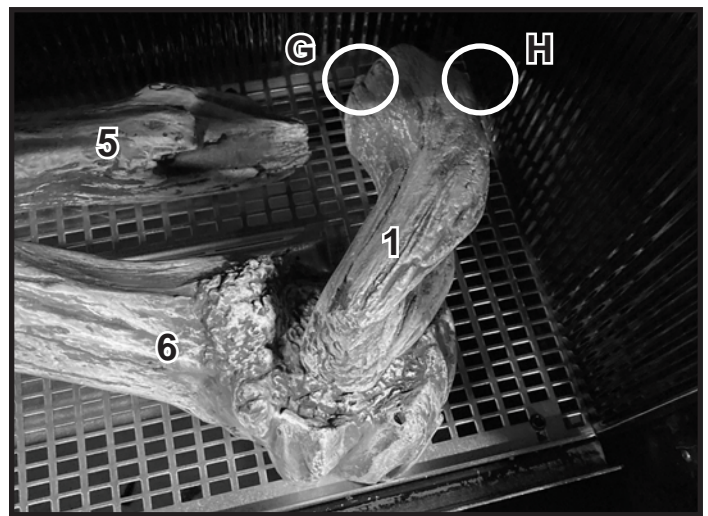


Figure 8 Install Log #1

**Media Placement:** Install required media as instructed in the appliance Installation Manual.

# Log Installation: OAKLG-LIN-LG / DWLG-LIN-LG / BIRLG-LIN-LG

## Models: PRIMO-II-60, PRIMO-II-60ST

**Log #1:** Center the log left to right between the log pins noted in Figure 1. Slide Log #1 back until it contacts both log pins. See Figure 2.

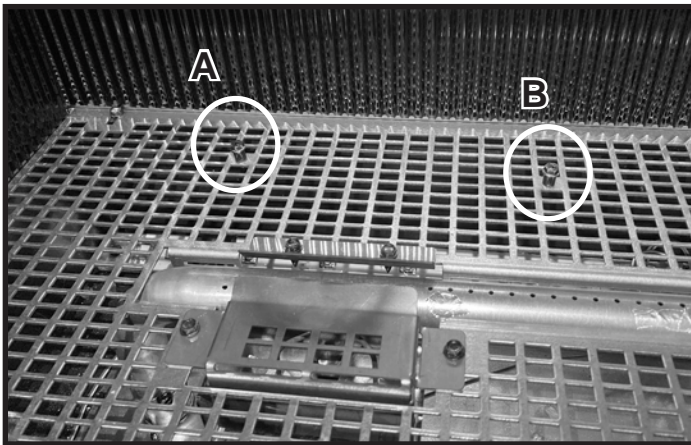


Figure 1 Log Pins for Log #1

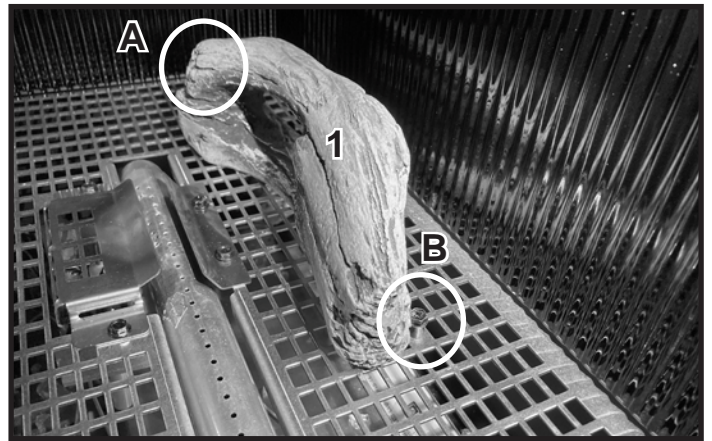


Figure 2 Install Log #1

**Log #3:** Place the left side of Log #3 against log pin (C). Pivot the right side of the log backward until it contacts the log pin (D) at the rear (black glass refractory and see-through installations) or the fiber refractory. See Figure 3.

**Log #5:** Place the left side of Log #5 against the left log pin (E). Pivot the log backwards until it contacts the rear log pin (F) for See Through models and those using black glass refractory. For installations with fiber refractory, the log will contact the refractory. See Figure 4.

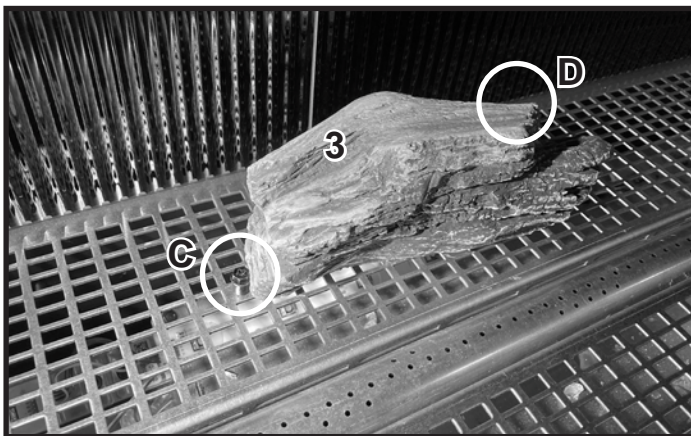


Figure 3 Install Log #3

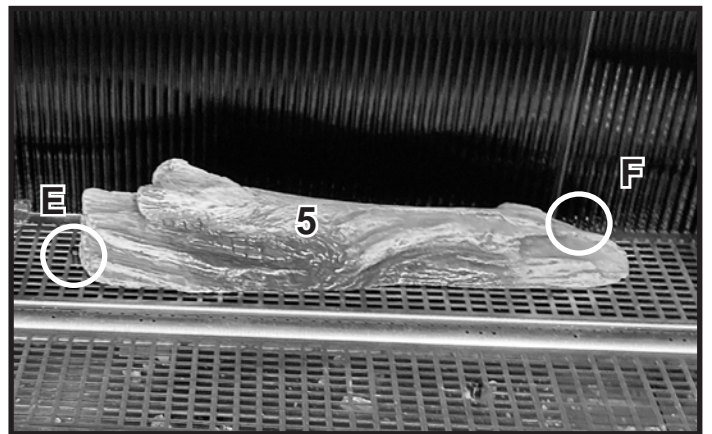


Figure 4 Install Log #5

**Log #8:** Place the right side of Log #8 against the right log pin (H). Pivot the left side forward until it contacts the front log pin (G). See Figure 5.

**Log #2:** Set the right side of Log #2 on Log #3 as shown in Figure 6. Pivot the left base of the log forward until it contacts the media tray ledge.

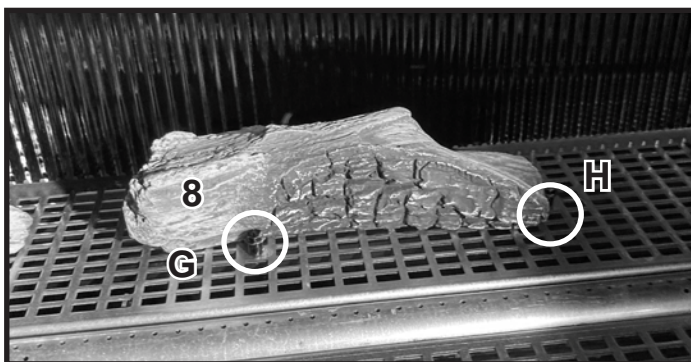


Figure 5 Install Log #8



Figure 6 Install Log #2

**Log #4:** Place Log #4 against the right log pin (K). Pivot the log backward until it contacts the left log pin (J). See Figure 7.

**Log #7:** Set the right side of Log #7 on Log #4 as shown in Figure 8. There should be a 1-1/2 inch overlap as noted. Pivot the left side of the log forward until it contacts the media tray ledge.

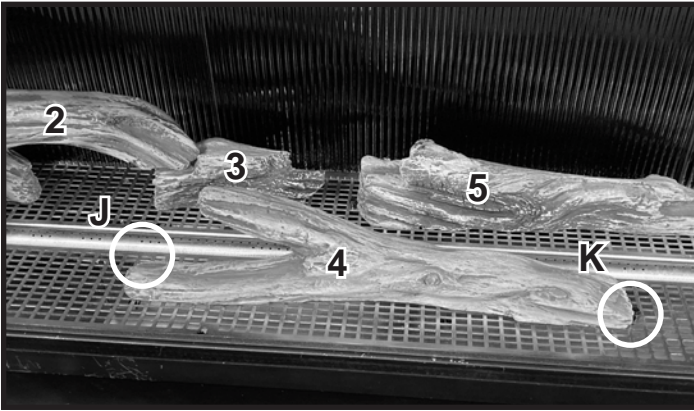


Figure 7 Install Log #4

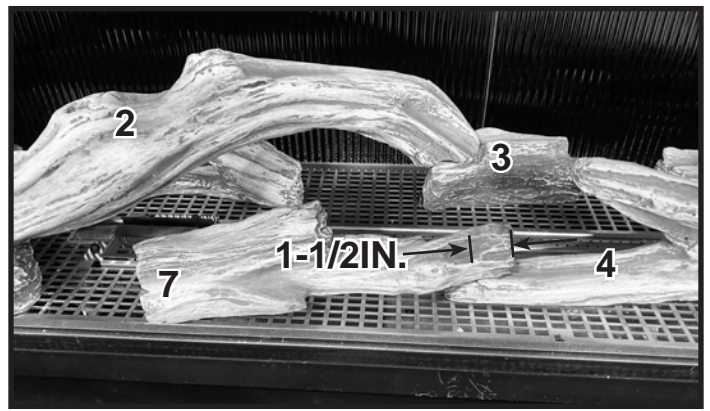


Figure 8 Install Log #7

**Log #6:** Insert the left side support feature of Log #6 into the recess on Log #5 as shown in Figure 9. Pivot the right side of the log forward until it contacts the media tray ledge. Ensure the log is stable and fully engaged with the supporting log.

**Log #9:** Set the left side of Log #9 on the support area of Log #6. Pivot the right side base of the log backward until it contacts the rear log pin (I) for See Through models and those using black glass refractory. See Figure 10. For installations with fiber refractory, the right side will contact the back refractory.

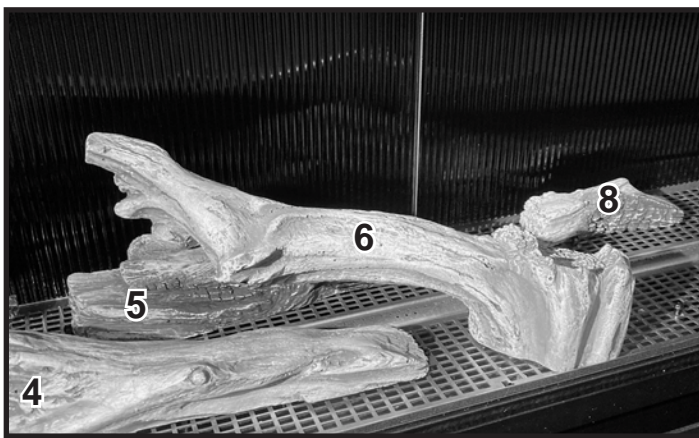


Figure 9 Install Log #6

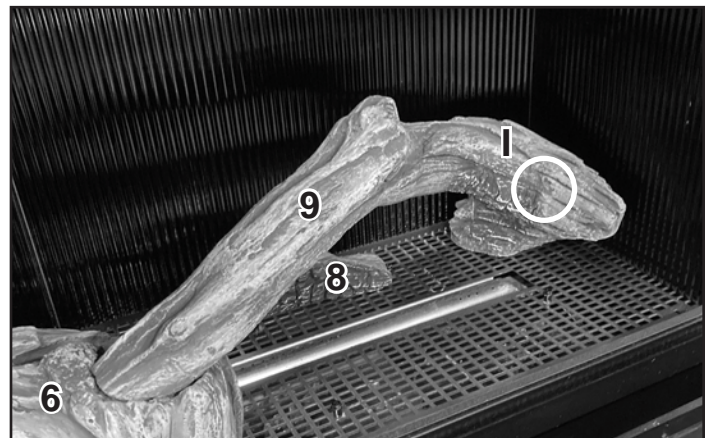


Figure 10 Install Log #9

**Log #10:** Place the left side of Log #10 against the left log pin (L). Pivot the right side of the log backward until it contacts the rear log pin (M). See Figure 11.

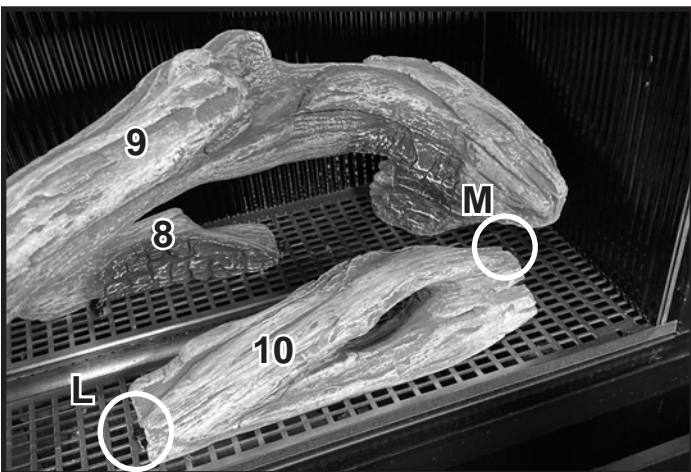


Figure 11 Install Log #10

**Media Placement:** Install required media as instructed in the appliance Installation Manual.

# Log Installation: OAKLG-LIN-LG / DWLG-LIN-LG / BIRLG-LIN-LG

## Models: PRIMO-II-72, PRIMO-II-72ST

**Log #1:** Center Log #1 left to right between log pins (A) and (B) as shown in Figure 1 and Figure 2. Slide Log #1 back until it contacts both log pins.

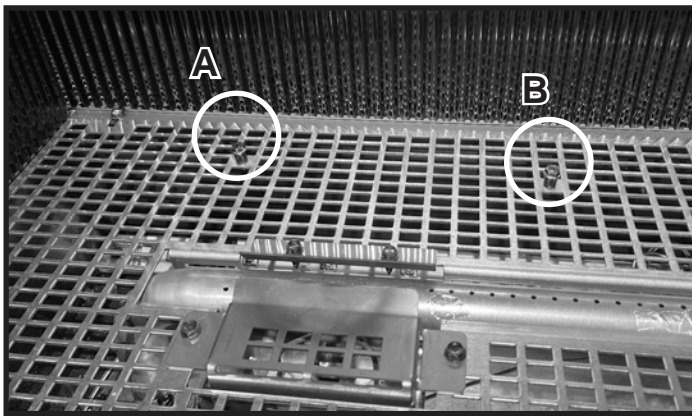


Figure 1 Log Pins for Log #1

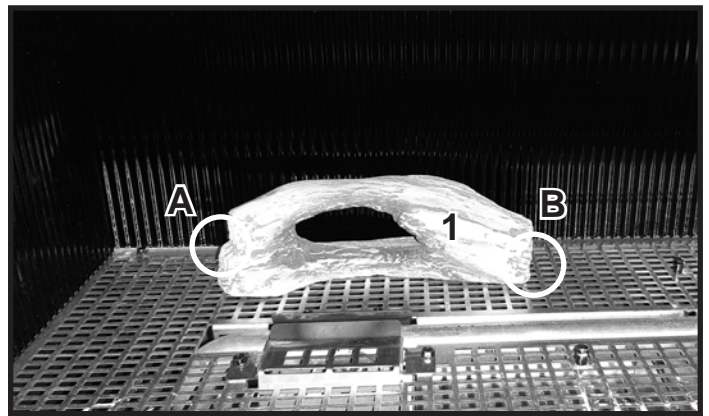


Figure 2 Install Log #1

**Log #3:** Place the left side of Log #3 against log pin (C). Pivot the right side of the log backward until it contacts the rear pin (D) for See Through models and those using black glass refractory. See Figure 3. For installations with fiber refractory, the log will contact the back refractory.

**Log #5:** Place the left side of Log #5 against log pin E. Pivot the right side of the log backward until it contacts the rear log pin (F). See Figure 4.

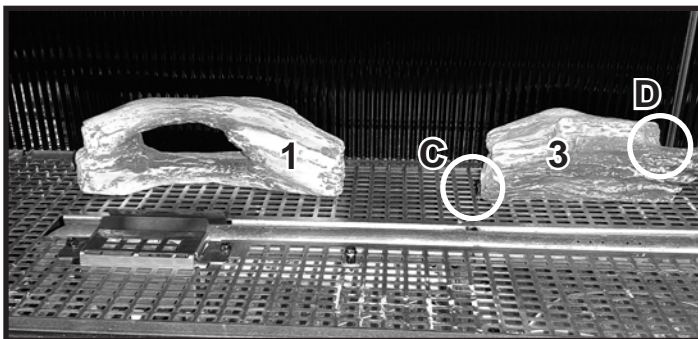


Figure 3 Install Log #3

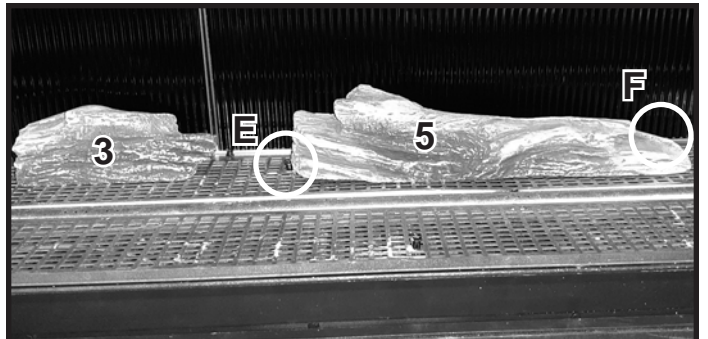


Figure 4 Install Log #5

**Log #7:** Place the right side of Log #7 against the right log pin (H). Pivot the left side toward the burner until it contacts log pin (G). See Figure 5.

**Log #2:** Place the right side of Log #2 onto the support feature on Log #3. Pivot the left base of Log #2 forward until it contacts the media tray ledge. See Figure 6.

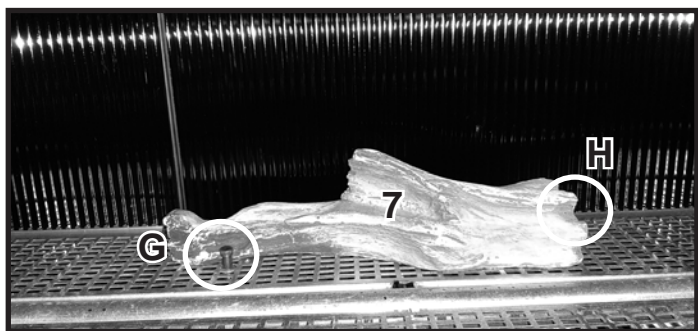


Figure 5 Install Log #7

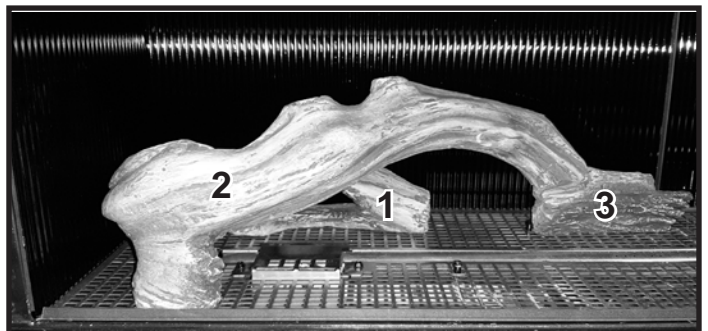


Figure 6 Install Log #2

**Log #4:** Place Log #4 against log pin K on the right shown in Figure 7 and Figure 8. Pivot the log backward until it contacts the left log pin (J). See Figure 7.

**Log #6:** Insert the left side support feature of Log #6 into the recess on Log #5. Pivot the right side of the log forward until it contacts the media tray ledge. Ensure the log is stable and fully engaged with the supporting log. See Figure 8.

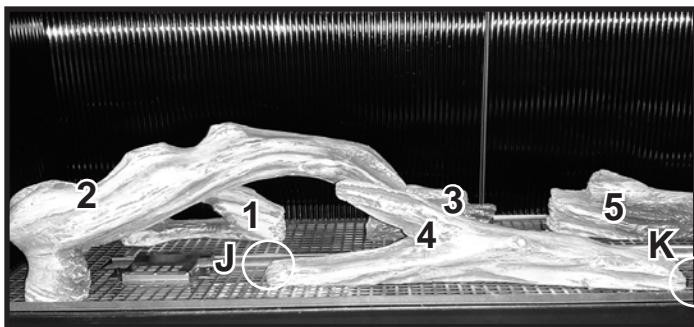


Figure 7 Install Log #4

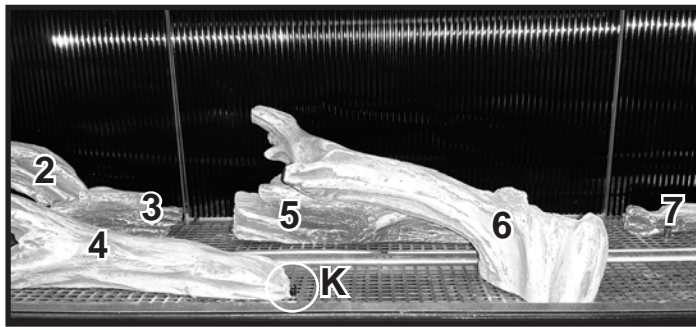


Figure 8 Install Log #6

**Log #8:** Set the right side of Log #8 next to log pin (M). Pivot the left side forward, away from the burner, to log pin (L) as shown in Figure 9.

**Log #9:** Set the left side of Log #9 on the support area of Log #8. Pivot the right side base of the log backward until it contacts the rear log pin (I) for See Through models and those using black glass refractory. For installations with fiber refractory, the right side of Log #9 will contact the back refractory. See Figure 10.

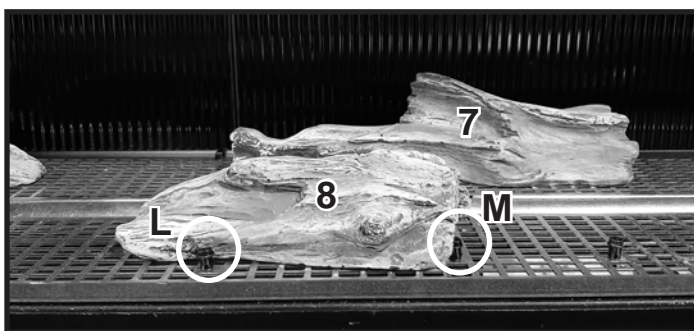


Figure 9 Install Log #8



Figure 10 Install Log #9

**Log #10:** Place the left side of Log #10 against the left log pin (N). Pivot the right side of the log backward until it contacts the rear log pin (O). See Figure 11.

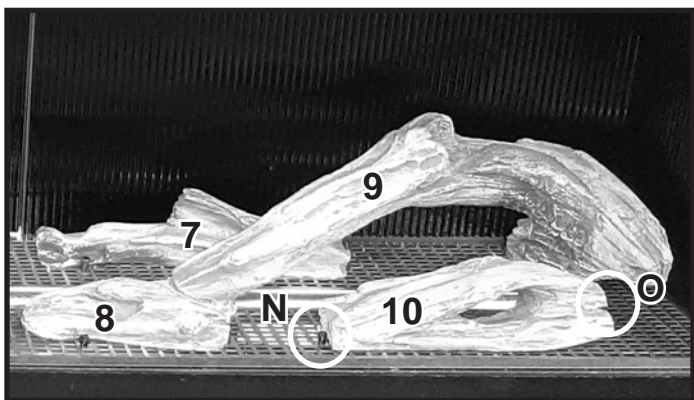


Figure 11 Install Log #10

**Media Placement:** Install required media as instructed in the appliance Installation Manual.



## Troubleshooting

If flames impinge upon the logs after installation, minor shifting of log position or media may be necessary to reduce flame impingement and sooting.

## Log Sets Installed



Log Set Installed - PRIMO-II-48 OAK LOGS



Log Set Installed - PRIMO-II-60 OAK LOGS



Log Set Installed - PRIMO-II-48 DRIFTWOOD



Log Set Installed - PRIMO-II-60 DRIFTWOOD



Log Set Installed - PRIMO-II-48 BIRCH

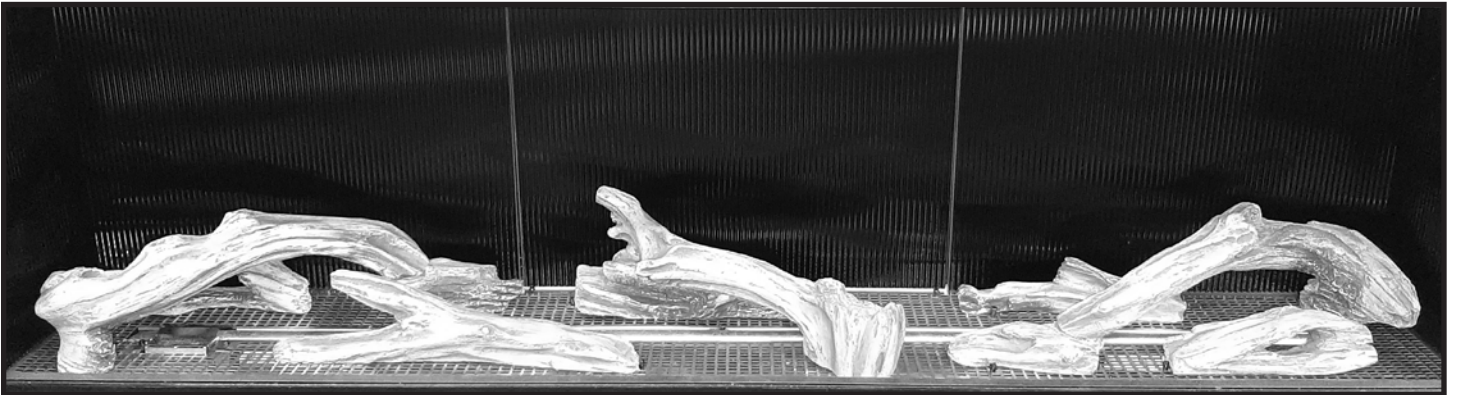


Log Set Installed -PRIMO-II-60 BIRCH

## Log Sets Installed - (continued)



Log Set Installed - PRIMO-II-72 OAK LOGS



Log Set Installed - PRIMO-II-72 DRIFTWOOD



Log Set Installed - PRIMO-II-72 BIRCH

## Service Parts List

| All Log Sets | HHT Part #   | Model                          | Description                      |
|--------------|--------------|--------------------------------|----------------------------------|
|              | 501-836-25   | PRIMO-II Series                | Log Pin (Quantity 25)            |
| OAK          | HHT Part #   | Model                          | Description                      |
|              | OAKLG-LIN-SM | PRIMO-II-48/ST                 | Oak Linear Log Set - Small       |
|              | OAKLG-LIN-LG | PRIMO-II-60/ST, PRIMO-II-72/ST | Oak Linear Log Set - Large       |
| DRIFTWOOD    | HHT Part #   | Model                          | Description                      |
|              | DWLG-LIN-SM  | PRIMO-II-48/ST                 | Driftwood Linear Log Set - Small |
|              | DWLG-LIN-LG  | PRIMO-II-60/ST, PRIMO-II-72/ST | Driftwood Linear Log Set - Large |
| BIRCH        | HHT Part #   | Model                          | Description                      |
|              | BIRLG-LIN-SM | PRIMO-II-48/ST                 | Birch Linear Log Set - Small     |
|              | BIRLG-LIN-LG | PRIMO-II-60/ST, PRIMO-II-72/ST | Birch Linear Log Set - Large     |