

## BLACK OR MARBLED GLASS LINER AND FLUTED GLASS LINER

### Models: PRIMO-II Series

#### Installation Instructions



Leave this manual with party responsible for use and operation.



**HOT GLASS WILL CAUSE BURNS.**

**DO NOT TOUCH GLASS UNTIL COOLED.**

**NEVER ALLOW CHILDREN TO TOUCH GLASS.**

A barrier designed to reduce the risk of burns from the hot viewing glass is provided with this appliance and must be installed for the protection of children and other at-risk individuals.

**CAUTION! Risk of Cuts or Abrasions.** Wear protective gloves and safety glasses during installation.

**NOTICE:** Handle refractory panels with care. Refractory may chip or crack if dropped or impacted.

### Table of Contents

A. Tools	1
B. Hardware	1
C. Kit Contents / Service Parts	1
D. Prepare Refractory Brackets From 4-IN-1 Retaining Bracket Assembly	2
E. Install Refractory - See Through Models	4
F. Install Refractory - Single-Sided Models	5

### A. Tools

Screw gun equipped with 1/4 in. socket  
Pliers

### B. Hardware

Confirm all of the necessary components are present before beginning installation. The items below are shipped inside the appliance.

#### Included with appliance:

- (1) 4-IN-1 Hand Bend Retaining Bracket Assembly
- (4) Self-Tapping Screws

### C. Kit Contents / Service Parts

Panel quantities vary by size and whether the appliance is single-sided or see-through.

**Note:** Individual panels are not available as service parts.

Glass Liner			
Model	Kit Name	Back Panel Quantity	Side Panel Quantity
PRIMO-II-48	BGK-MAR-PR-48	1	2
PRIMO-II-60	BGK-MAR-PR-60	1	2
PRIMO-II-72	BGK-MAR-PR-72	1	2
PRIMO-II-48ST PRIMO-II-60ST PRIMO-II-72ST	BGK-MAR-PR-ST	0	2
PRIMO-II-48	BGK-PR-48	1	2
PRIMO-II-60	BGK-PR-60	1	2
PRIMO-II-72	BGK-PR-72	1	2
PRIMO-II-48ST PRIMO-II-60ST PRIMO-II-72ST	BGK-PR-ST	0	2
Fluted Glass Liner			
Model	Kit Name	Back Panel Quantity	Side Panel Quantity
PRIMO-II-48	BGK-FL-PR-48	3	2
PRIMO-II-60	BGK-FL-PR-60	3	2
PRIMO-II-72	BGK-FL-PR-72	3	2
PRIMO-II-48ST PRIMO-II-60ST PRIMO-II-72ST	BGK-FL-PR-ST	0	2
Description		Part Number	
4-IN-1 Retaining Bracket Assembly		2670-245*	
*Note: The 4-IN-1 Retaining Bracket Assembly is combined with extra parts for shipment with the appliance. The extra parts are not needed for glass refractory liners.			

#### D. Prepare Refractory Brackets From 4-IN-1 Retaining Bracket Assembly

1. Break refractory bracket assembly by hand into four individual clips as shown in Figure 1 and Figure 2.
2. Bend the refractory bracket to 180 degrees as shown in Figure 3 and Figure 4.
3. Bend the glass retaining tab as shown in Figures 5 and 6.

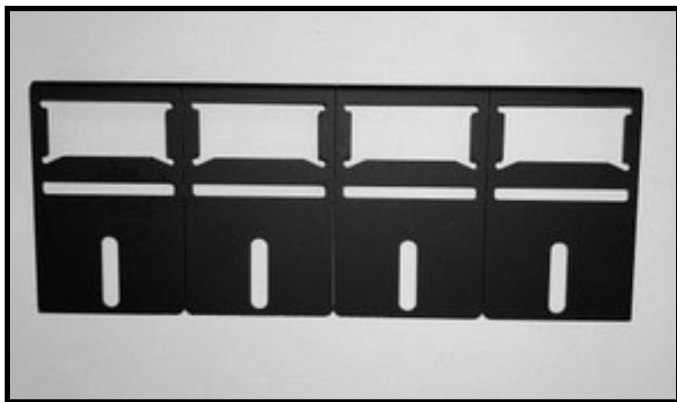


Figure 1 4-IN-1 Retaining Bracket Assembly

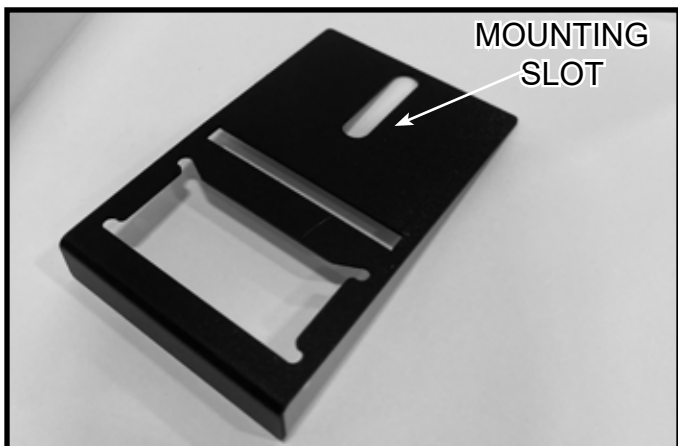


Figure 2 Individual Refractory Bracket

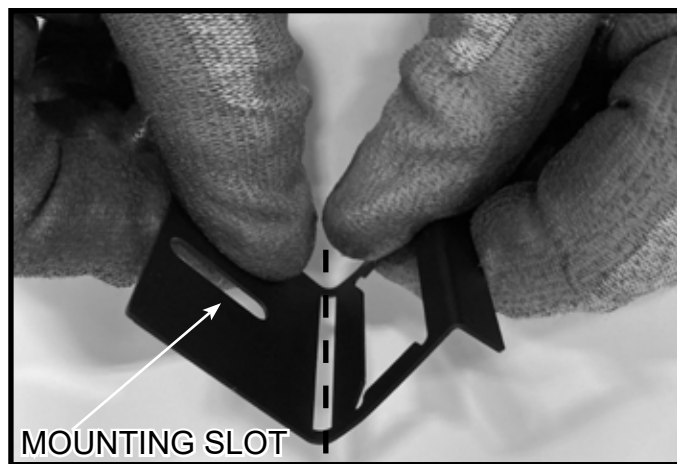


Figure 3 Location of 180 Degree Bend



Figure 4 Bend 180 degrees

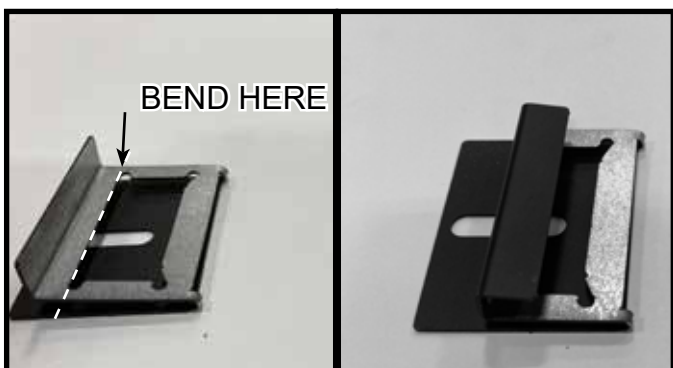


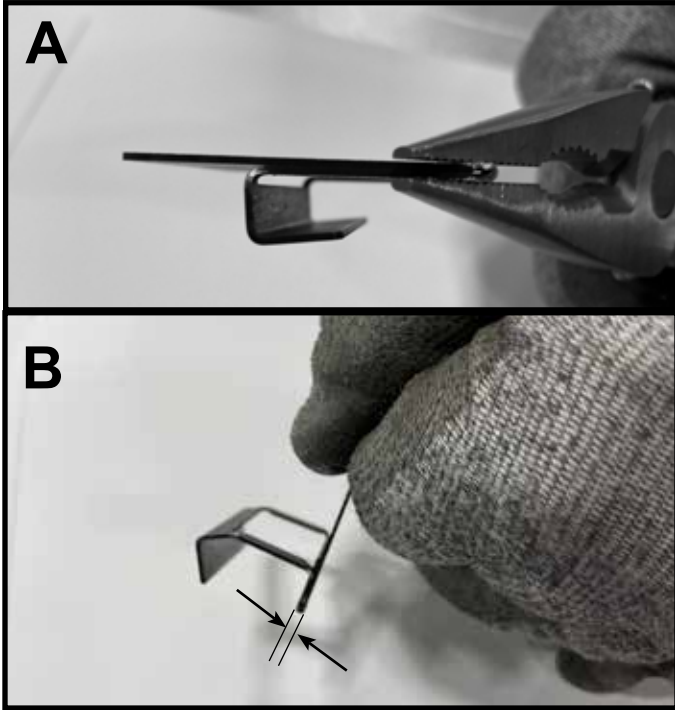
Figure 5 Second Bend - Glass Retaining Tab



Figure 6 Refractory Bracket Prepared

4. When installing retaining brackets on the side panels, the first bend should be flattened with a pliers so that the bracket does not create a space between the refractory panel and the firebox. Figures 7.A and 7.B show this flattening process.

**Note:** The back panel refractory brackets should not be flattened, because the extra spacing is an intentional feature.



**Figure 7** Flattening of Side Refractory Brackets - All Models

## E. Install Refractory - See Through Models

(For Single-Sided models, see next page)

### Install Glass Refractory - Black, Marbled or Fluted

1. Prepare the two side refractory brackets per the instructions in Section D.
2. Use a pliers to close the gap on the initial hand bend as shown in Figure 7.
3. Locate the two side refractory panels. Panels may be placed with either end facing down.

4. Place one side panel into position and hold while installing the refractory bracket. Ensure no gap is present between the glass panel and the side of the appliance. See Figure 8.
5. Fasten the refractory bracket in place with the included self-tapping screw. See Figure 9 and Figure 10. Repeat with other side panel.

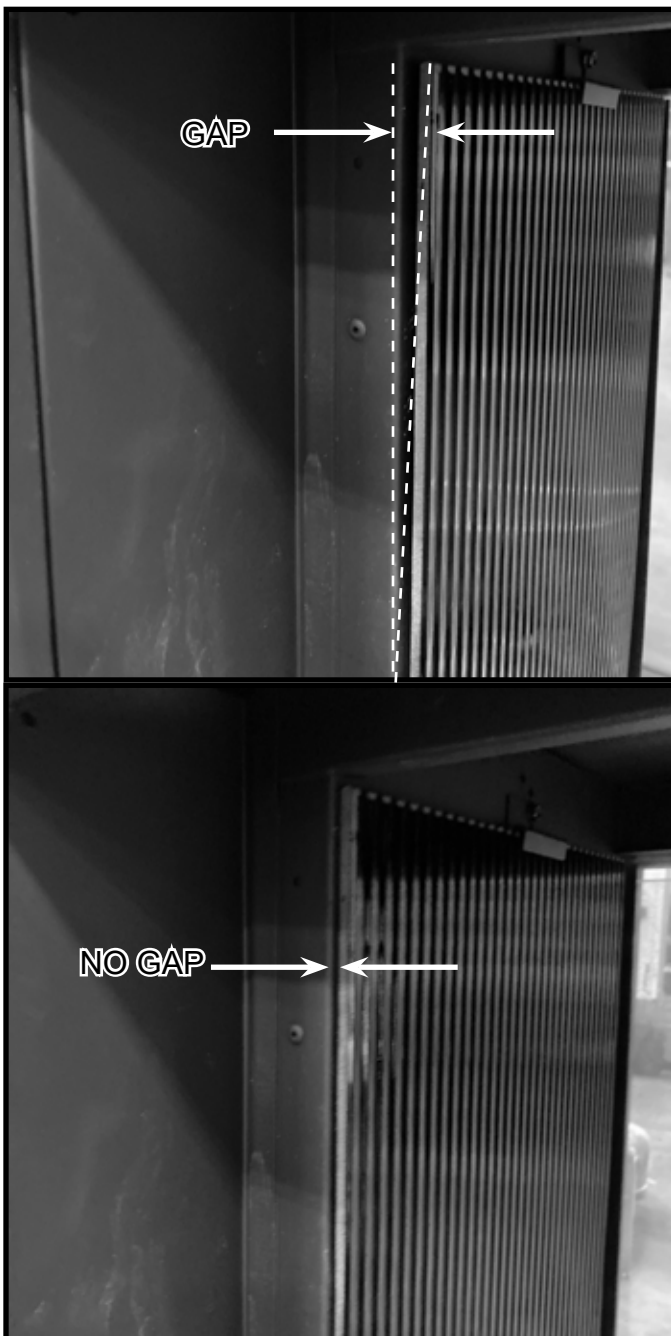


Figure 8 Ensure No Gap Exists



Figure 9 Installing Refractory Bracket with Self-Tapping Screw



Figure 10 Side Refractory and Bracket Installed

## F. Install Refractory - Single-Sided Models

### Fluted Glass (Three Back Panels)

See Page 6.

### Black or Marbled Glass (Single Back Panel)

See below.

#### Single Back Panel

1. Prepare refractory brackets per the instructions in Section D.
2. Install the back refractory panel by placing it inside the firebox and centering left to right as shown in Figure 11. The bottom of the panel should rest between the media tray flange and the screw heads as shown in Figure 16 (B).

**Note:** The refractory panel does not have a designated top and bottom side. It will fit inside the appliance either way.



Figure 11 Gap is Equal on Both Sides

3. Place two refractory brackets on the top of the panel, each approximately 12 inches from the left and right sides of the panel. Install the brackets using the included self-tapping screws. See Figure 12.

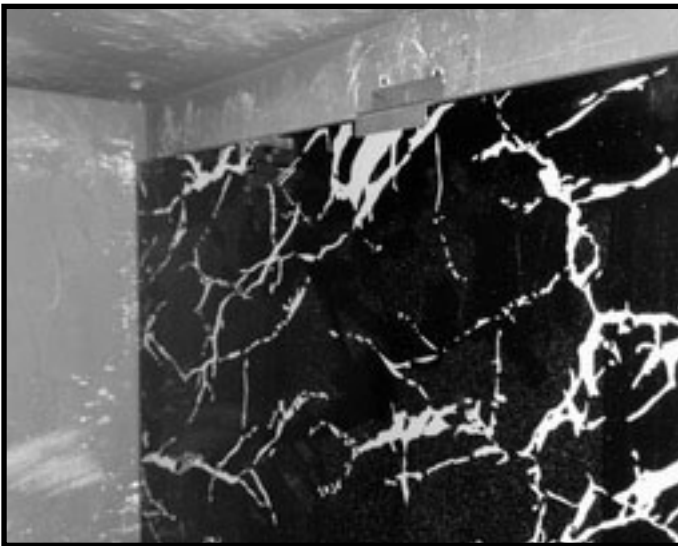


Figure 12 Place Refractory Brackets on Back Panel

4. Locate the two side refractory panels. The sides are universal left to right.
5. Install side panels one at a time. Place the side panel into the appliance on the left side as shown in Figure 13. Push it back to minimize gaps in the corner.



Figure 13 Side Panel Positioned

6. Place the refractory bracket into position and ensure that it is centered on the panel and that no gaps exist. See Figure 8. Secure with an included self-tapping screw as shown in Figure 14. Repeat procedure for right side panel.
7. Figure 15 shows the refractory installed.



Figure 14 Install Refractory Bracket

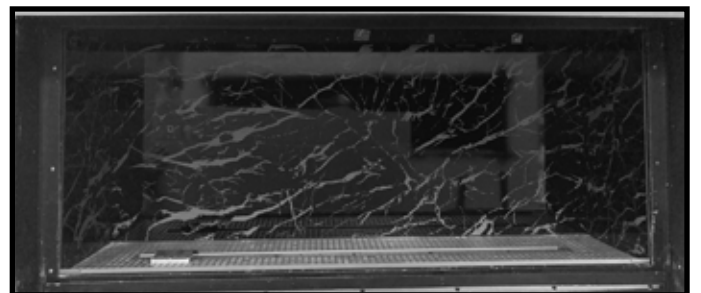


Figure 15 Glass Liner Installed

### Fluted Refractory - Three Back Panels

1. Prepare refractory brackets per the instructions in Section D.
2. Locate the two side refractory panels and the three back refractory panels.

**Note:** The panels do not have a designated left, right, top or bottom side, but they must be installed with the ribs in a vertical orientation.

3. Install the back left panel and hold in place. See Figure 16 (A). The bottom of the panel should rest between the media tray flange and the screw heads as shown in Figure 16 (B).
4. Install the left side panel into the appliance on the left side as shown in Figure 17. Push it back to minimize gaps in the corner. Verify no gaps exist between the panel and the firebox. See Figure 8. Place the refractory bracket in the center of the side panel and fasten with an included self-tapping screw. See Figure 18.
5. Repeat Steps 3 and 4 to install the right side panel.

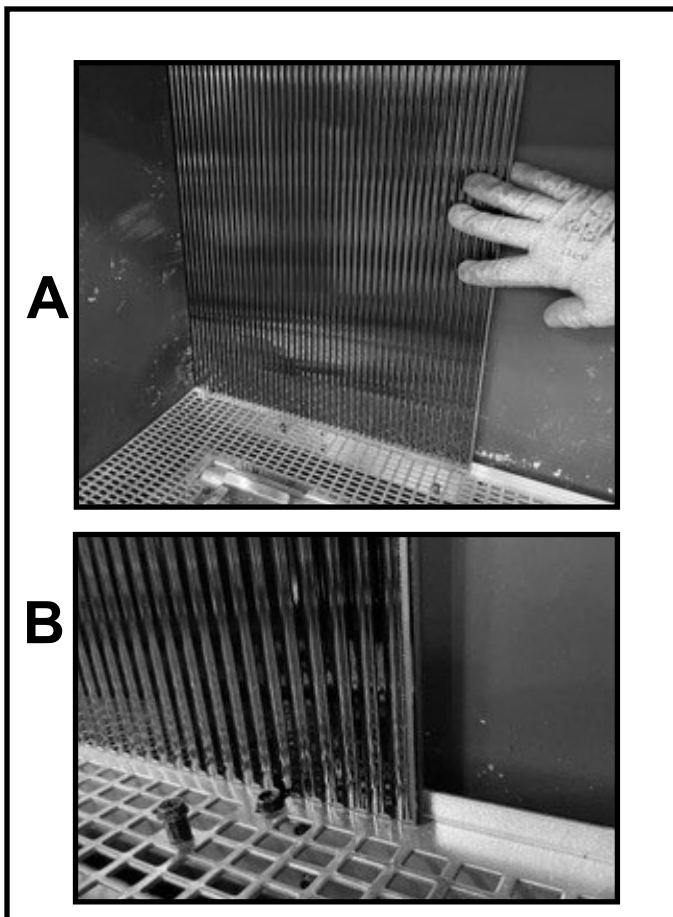


Figure 16 Back Left Refractory Panel Positioned



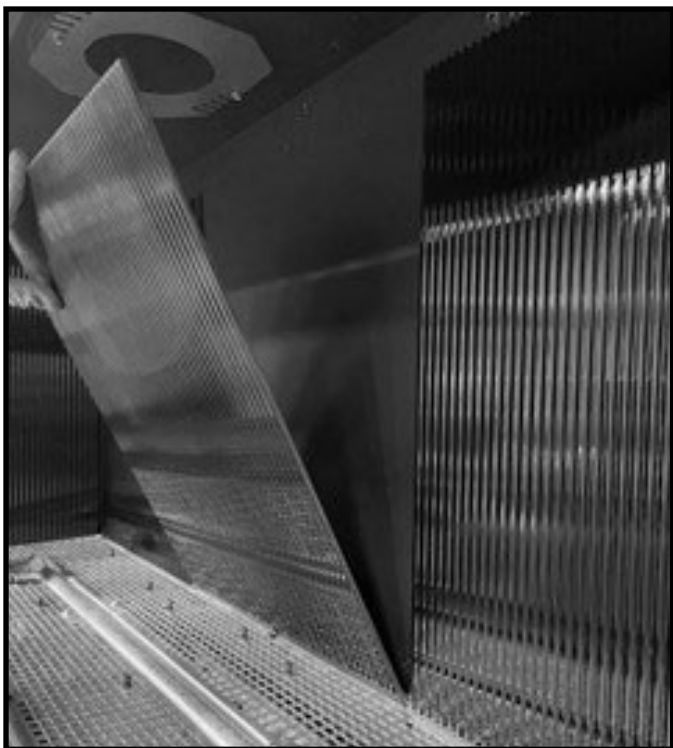
Figure 17 Position Left Side Panel



Figure 18 Install Side Panel Refractory Bracket

6. Install the center back refractory panel. See Figure 19.
7. Place a refractory bracket on each of the two back panel seams and install the included self-tapping screws to hold them in place. See Figure 20.





**Figure 19 Position Center Back Panel**



**Figure 20 Install Refractory Brackets on Back Panel Seams**

8. Slide the three back panels left to right to minimize gaps between panels and in corners. Figure 21 shows the fluted glass liner installed.



**Figure 21 Three Piece Back Fluted Glass Liner Installed**

Please contact your Heat & Glo dealer with any questions or concerns.  
For the location of your nearest Heat & Glo dealer, please visit [www.heatnglo.com](http://www.heatnglo.com).

Heat & Glo, a brand of Hearth & Home Technologies  
7571 215th Street West, Lakeville, MN 55044  
[www.heatnglo.com](http://www.heatnglo.com)