

Ember Lighting & Refractory Upgrade Kit

SKUs: MARQ36-UPK, MARQ42-UPK, BASEMQ36TB-B, BASEMQ36HB-B, BASEMQ36GL-B, BASEMQ42TB-B, BASEMQ42HB-B, BASEMQ42GL-B



MODELS: MARQ36IN, MARQ42IN

Installation Instructions



Leave this manual with party responsible for use and operation.

CAUTION! Risk of Cuts or Abrasions. Wear protective gloves and safety glasses during installation.

NOTICE: Handle refractory panels with care. Refractory may chip or crack if dropped or impacted.

SPECIAL TOOLS

Phillips screwdriver bit

Screw gun equipped with 1/4 in. driver bit

UPGRADE KIT COMPONENTS

- (1) Refractory Base Kit
- (1) LED Tub Assembly
- (1) Bag of Teco-Sil
- (1) Rear Light Cover

INSTALLATION

1. Remove decorative front from appliance and set it aside in a safe place where it will not get damaged.
2. Use Glass Clip Tool (that was supplied with the appliance) as shown in Figure 1 to unhook the four (4) glass slips along the bottom and the one (1) glass clip on each side of the glass assembly. Set the glass assembly aside in a safe place where it will not get damaged.



Figure 1 Glass Clip Tool

3. Remove Logs.



Figure 2 View inside the appliance after glass assembly has been removed



Figure 3 Logs removed from appliance

4. Remove lava rock.



Figure 4 Lava Rock removed from appliance

5. Remove Middle Base Refractory piece.

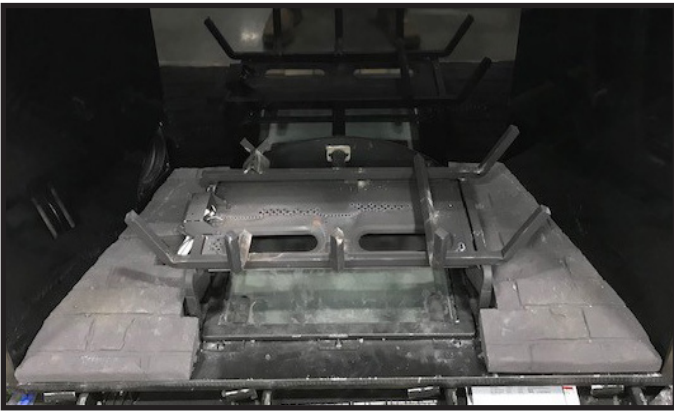


Figure 5 Middle Base Refractory removed from appliance

6. Remove the two (2) Left Base Refractory pieces.



Figure 6 Left Base Refractory pieces removed from appliance

7. Remove right base refractory piece.

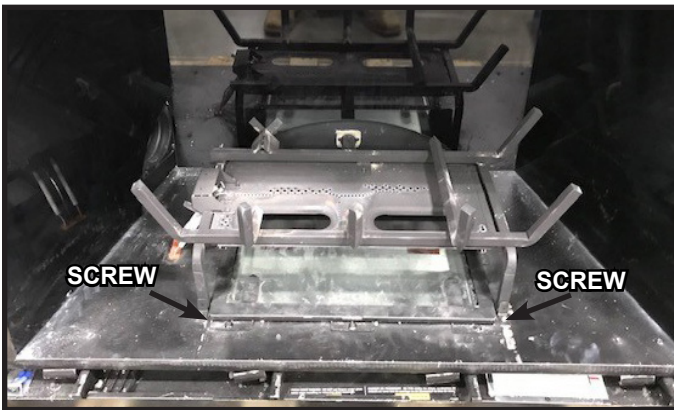


Figure 7 Right Base Refractory piece removed from appliance

8. Using a screw gun with a 1/4 in. driver bit, remove the three (3) screws that fasten the Pilot Assembly and Pilot Hood to the left side of the Burner. See Figure 8.

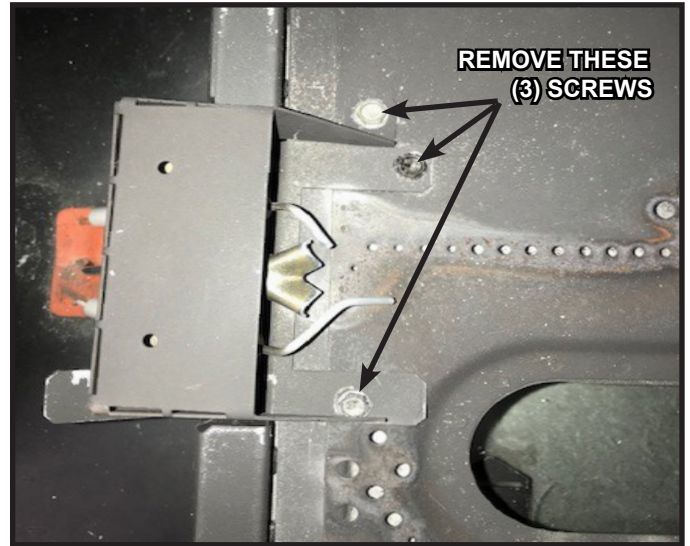


Figure 8 Screw location to detach Pilot Assembly and Pilot Hood

9. Push the Pilot Assembly and Pilot Hood to the left away from the Burner and Grate. See Figure 9.

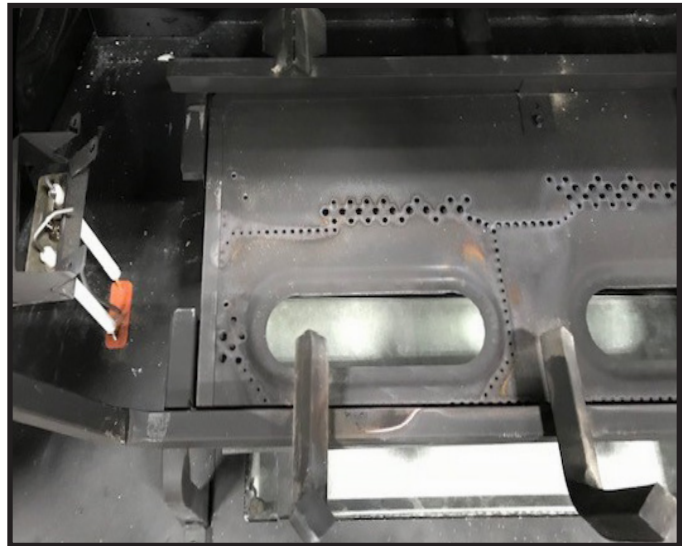


Figure 9 Pilot Assembly / Hood detached and moved away from Burner and Grate

10. Using a screw gun and a 1/4 in. driver bit, remove the two (2) screws shown in Figure 7 that fasten down the Burner and Grate Assembly to the bottom of the firebox. Pull the Burner and Grate assembly away from the back wall inside the firebox and towards yourself. Remove from the appliance. See Figure 10.

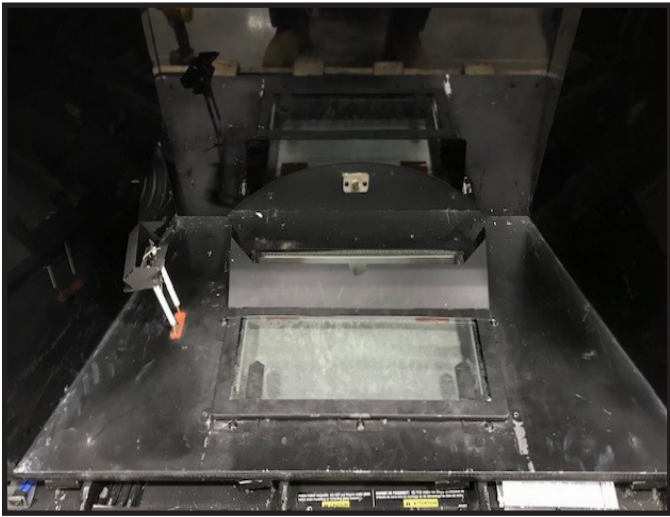


Figure 10 Burner / Grate assembly removed from inside the firebox

11. Using a screw gun and a Phillips screw driver bit, remove the eight (8) screws that fasten down the Glass Assembly to the bottom of the inside firebox. See Figure 11.

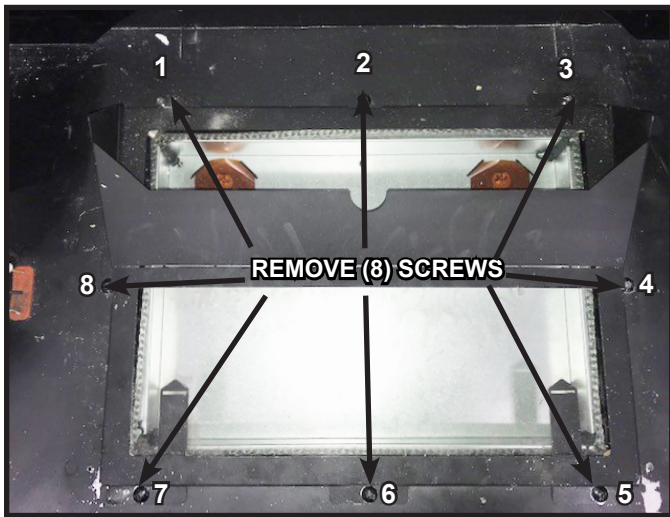


Figure 11 Remove Glass Assembly

12. Remove the Glass Assembly from the appliance and set it someplace where it will not be damaged. See Figure 12.

NOTE: Be careful with lifting the Glass Assembly out of the appliance so that the glass does not fall out the bottom of the frame.

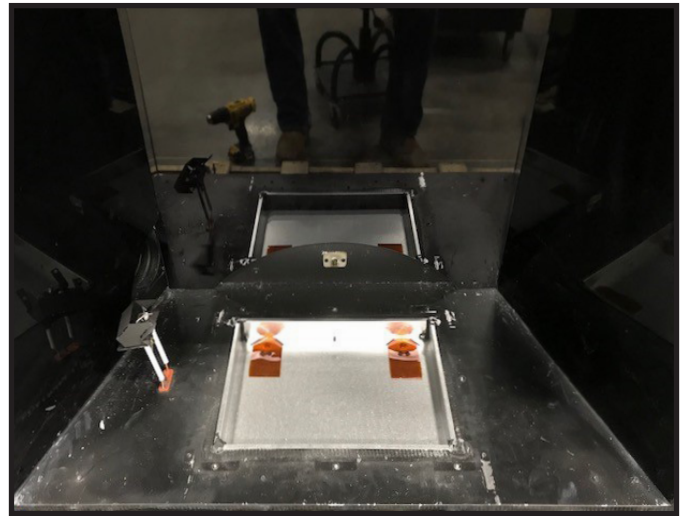


Figure 12 Glass Assembly removed from bottom inside firebox, exposing LED Tub Assembly

13. Lift the LED Tub Assembly up from the bottom inside of the firebox but do not pull it all the way out of the appliance as there is a plug connection you will need to disconnect. See Figure 13

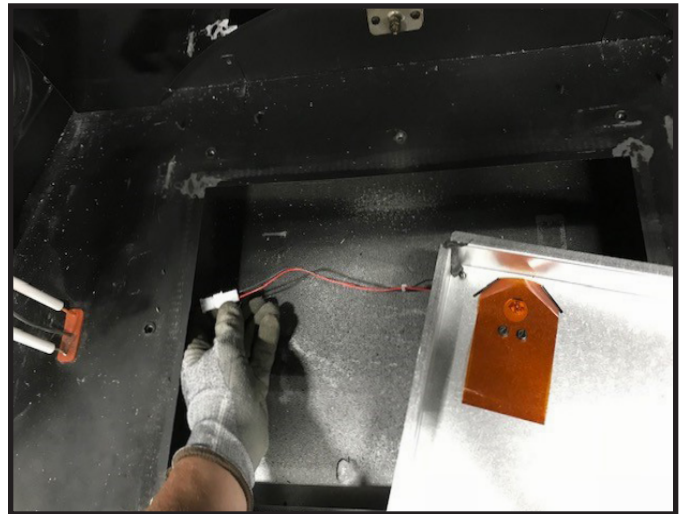


Figure 13 Connection to unplug before removing the LED Tub Assembly from the firebox

14. Once the plug for the LED Tub Assembly is disconnected, you can remove it from the appliance. Locate the new LED Assembly from the upgrade kit. The new LED Assembly will plug into the two connections located in the appliance. See Figure 14.

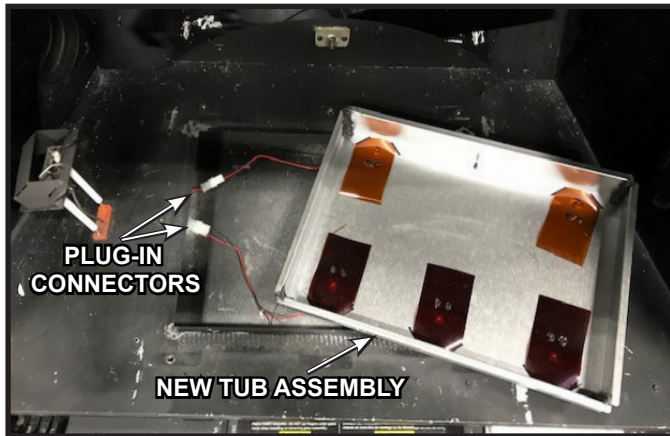


Figure 14 New LED Tub Assembly with connectors

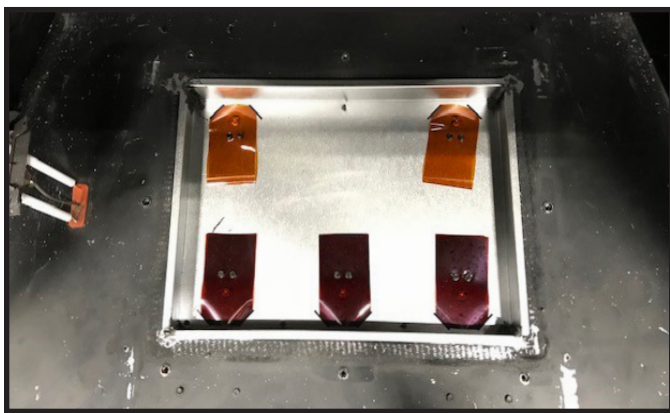


Figure 15 New LED tub assembly installed in appliance

15. Replace the Glass Assembly that was previously removed and fasten it to the firebox with the screws previously removed. Refasten all screws except for the back middle one. Save screw for future step.

16. Locate the rear light cover. See Figure 16.



Figure 16 Rear Light Cover

17. Lay the rear light cover down on the inner glass assembly underneath the light cover. See Figure 17.



Figure 17 Installing Rear Light Cover

18. The rear light cover should slide between the inner glass assembly and the light cover so that the clearance hole of the rear light cover lines up with the hole of the inner glass assembly. This is was left open in Step 15 (#2 screw shown in Figure 11). You may lift up on the light cover so that the rear light cover can fully slide into position underneath it.

19. Reinstall #2 screw saved in Step 15 (shown in Figure 11). This screw will hold down the rear light cover and the inner glass assembly down to the firebox bottom. See Figure 18.



Figure 18 Reinstall Center Back Screw

20. Reinstall the Burner / Grate Assembly by sliding the burner tube fully onto the orifice on the back wall inside the firebox. Line up the two front holes of the front grate legs with the two existing screw holes in the bottom inside the firebox. See Figures 19 and 20.

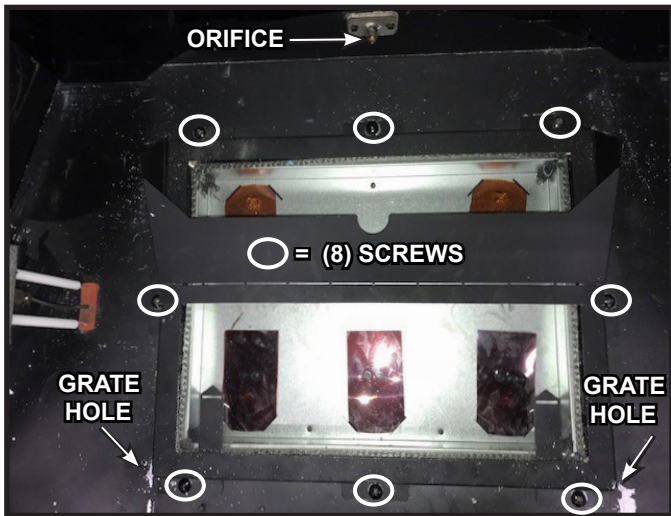


Figure 19 Glass Assembly back in appliance with screws

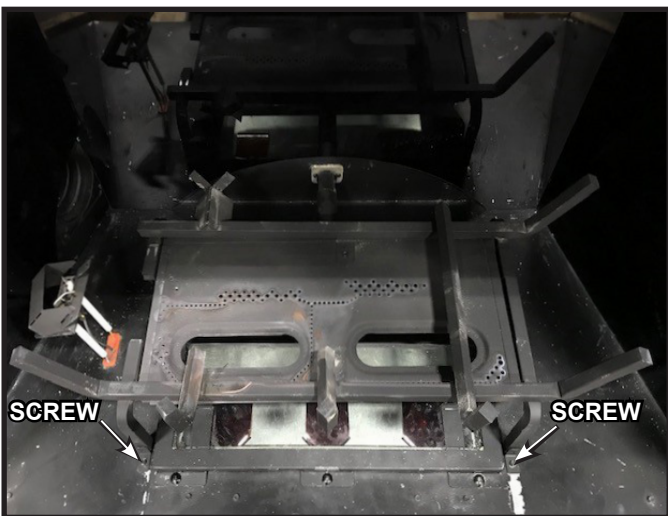


Figure 20 Burner / Grate Assembly installed

21. Reattach the Pilot Assembly and Pilot Hood to the Burner with the screws that were removed in step 8. See Figure 21.

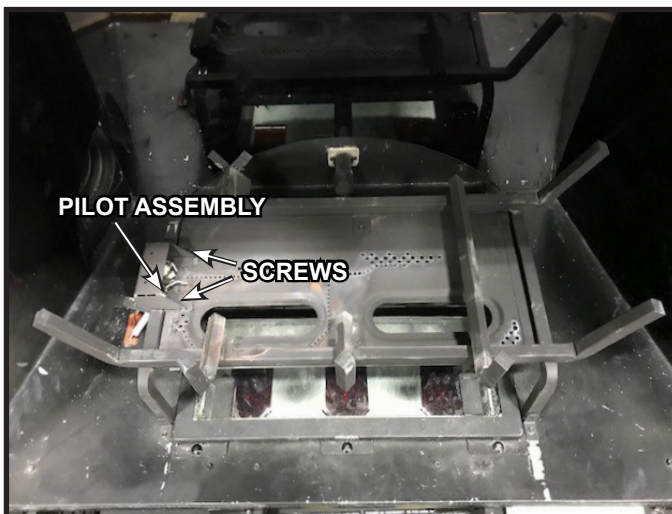


Figure 21 Reattach Pilot Assembly and Pilot Hood

22. Locate new refractory pieces. Install the Right Base Refractory piece. See Figure 22.

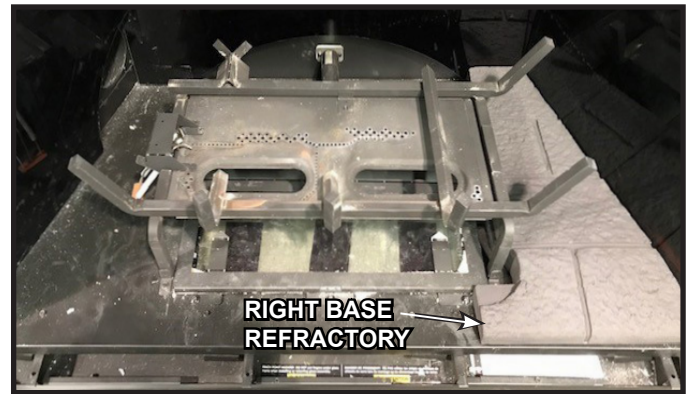


Figure 22 Right Base Refractory installed

23. Install the Left Back Base Refractory piece. See Figure 23.

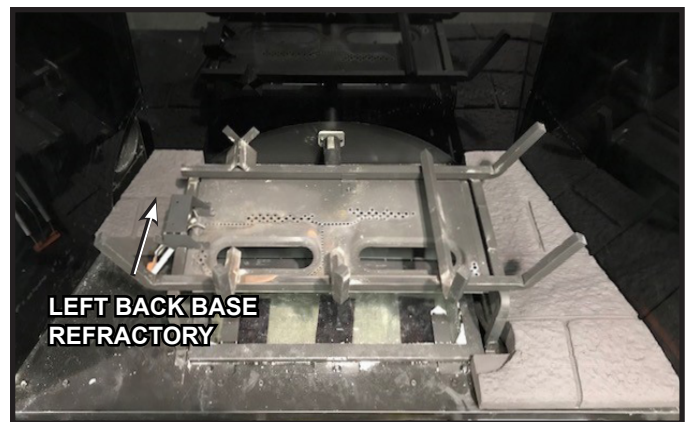


Figure 23 Left Back Base Refractory installed

24. Install Left Front Base Refractory piece. See Figure 24.



Figure 24 Left Front Base Refractory installed

25. Install Middle Base Refractory piece. See Figure 25.

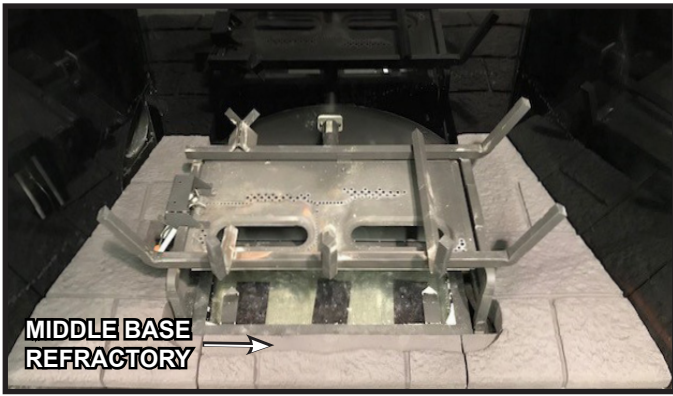


Figure 25 Middle Base Refractory installed

26. Install Teco-Sil. Turn ember lights on and fog Teco-Sil to desired coverage. See Figure 26.

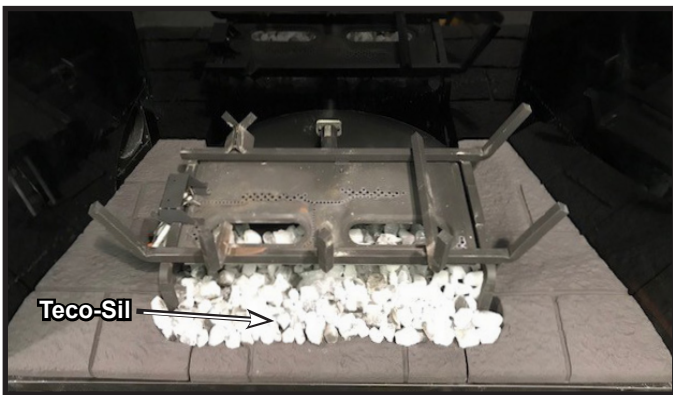


Figure 26 Teco-Sil installed

27. Spread Lava Rock on base refractory as desired. See Figure 27 for example.



Figure 27 Lava Rock Installed (Example)

28. Reinstall Log #1. See Figure 28.



Figure 28 Log #1 Installed

29. Reinstall Log #2. See Figure 29.



Figure 29 Log #2 Installed

30. Reinstall Log #3. See Figure 30.



Figure 30 Log #3 Installed

31. Reinstall Log #4. See Figure 31.



Figure 31 Log #4 Installed

32. Reinstall Log #5. See Figure 32.

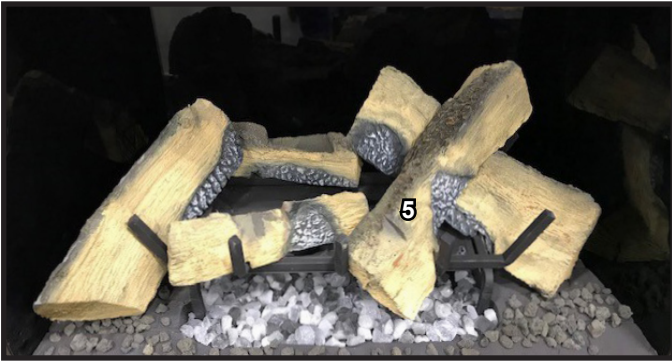


Figure 32 Log #5 Installed

33. Reinstall Log #6. See Figure 33.

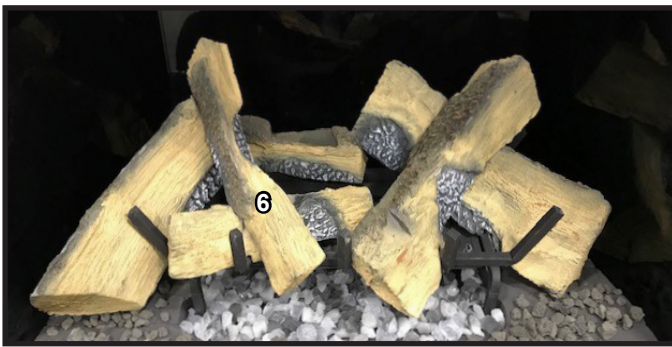


Figure 33 Log #6 Installed

34. Reinstall Log #7. See Figure 34.



Figure 34 Log #7 Installed

Please contact your Majestic dealer with any questions or concerns.

For the location of your nearest Majestic dealer, please visit www.majesticproducts.com.

Majestic, a brand of Hearth & Home Technologies
7571 215th Street West, Lakeville, MN 55044
www.majesticproducts.com