

PHTRIM-MCE-36, PHTRIM-MCE-48, PHTRIM-MCE-60, PHTRIM-MCE-72

Trim Kit for PHFR-MCE Series

Passive Heat System for Heat Management

**Installation Instructions**



Leave this manual with party responsible for use and operation.


**CAUTION! Risk of Cuts, Abrasions or Flying Debris.**

Wear protective gloves and safety glasses during installation. Sheet metal edges are sharp.

**CAUTION! Do not install damaged components.**

If any parts are missing or damaged, contact your dealer before starting installation. **DO NOT** install a damaged kit.


DANGER



**HOT GLASS WILL CAUSE BURNS.**

**DO NOT TOUCH GLASS UNTIL COOLED.**

**NEVER ALLOW CHILDREN TO TOUCH GLASS.**

A barrier designed to reduce the risk of burns from the hot viewing glass is provided with this appliance and must be installed for the protection of children and other at-risk individuals.

**WARNING! Risk of Fire! DO NOT** apply combustible materials beyond the minimum clearances. Comply with all minimum clearances to combustibles as specified. Overlapping materials could ignite and will interfere with proper operation of decorative fronts.

**Introduction**

Installation of the Passive Heat Trim Kit is a required part of the installation of the PHFR-MCE (front discharge) Passive Heat system for heat management. The appropriate Passive Heat Front Discharge Kit must be purchased separately and installed prior to this trim kit. Installation of the Passive Heat Kit and Passive Heat Trim Kit must be done in conjunction with the appliance installation. Installation of this kit **MUST** be performed by a qualified service technician.

PHTRIM kits are also approved for all sizes of the MEZZO-C, CRAVE-C, and ECHELON-C Series appliances. Refer to Table 1 in Figure 1 for compatibility between appliance models and the appropriate passive heat kit and trim kit.

**WARNING! Risk of Fire! DO NOT** install the Passive Heat with models that are not approved. Overheating of appliance and combustible materials will occur.

**Kit Contents/Service Parts:**

- (1) Register Cover
- (1) Register Backer
- (12) #8 x 1-1/4 in. Screw
- (2) Hurricane Screws

Verify and remove contents from packaging before beginning installation. See Figure 1.

**Preparation**

**CAUTION! Risk of Burns!**

- *The fireplace should be turned off and cooled before kit is installed.*
- *Shut off gas supply.*

**Painting**

If desired finishing includes a painted register cover and screws, 100% acrylic latex with compatible primer is recommended.

PHTRIM-MCE-36 KIT		
DESCRIPTION	SERVICE PART NO.	QTY
36 REGISTER COVER	2560-201	1
	Service part not available	
36 REGISTER BACKER	2560-205	1
	Service part not available	
SCREW, #8 X 1-1/4 IN.	370-842	12*
	Service part not available	
HURRICANE SCREW	2005-861	2
	Replacement part: 2005-861/25	1

PHTRIM-MCE-48 KIT		
DESCRIPTION	SERVICE PART NO.	QTY
48 REGISTER COVER	2560-101	1
	Service part not available	
48 REGISTER BACKER	2560-105	1
	Service part not available	
SCREW, #8 X 1-1/4 IN.	370-842	12*
	Service part not available	
HURRICANE SCREW	2005-861	2
	Replacement part: 2005-861/25	1

PHTRIM-MCE-60 KIT		
DESCRIPTION	SERVICE PART NO.	QTY
60 REGISTER COVER	2560-102	1
	Service part not available	
60 REGISTER BACKER	2560-106	1
	Service part not available	
SCREW, #8 X 1-1/4 IN.	370-842	12*
	Service part not available	
HURRICANE SCREW	2005-861	2
	Replacement part: 2005-861/25	1

PHTRIM-MCE-72 KIT		
DESCRIPTION	SERVICE PART NO.	QTY
72 REGISTER COVER	2560-202	1
	Service part not available	
72 REGISTER BACKER	2560-206	1
	Service part not available	
SCREW, #8 X 1-1/4 IN.	370-842	16
	Service part not available	
HURRICANE SCREW	2005-861	2
	Replacement part: 2005- 861/25	1

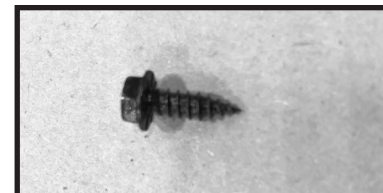
KIT / MODEL COMPATIBILITY			
SIZE	APPLIANCE MODEL	PHFR KIT	PHTRIM KIT
36	MEZZO36-C MEZZO36ST-C CRAVE4836-C CRAVE4836ST-C ECHEL36IN-C ECHEL36STIN-C	PHFR-MCE-36	PHTRIM-MCE-36
48	MEZZO48-C MEZZO48ST-C CRAVE6048-C CRAVE6048ST-C ECHEL48IN-C ECHEL48STIN-C	PHFR-MCE-48	PHTRIM-MCE-48
60	MEZZO60-C MEZZO60ST-C CRAVE7260-C CRAVE7260ST-C ECHEL60IN-C	PHFR-MCE-60	PHTRIM-MCE-60
72	MEZZO72-C MEZZO72ST-C CRAVE8472-C CRAVE8472ST-C ECHEL72IN-C	PHFR-MCE-72	PHTRIM-MCE-72



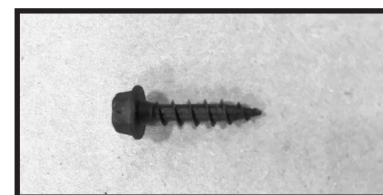
**Register Cover (Size varies by model)**



**Register Backer (Size varies by model)**



**2005-861 Hurricane Screw**



**Screw, 8 X 1-1/4 IN. \*Size 36, 48, 60 require only 12 of the 16 included in the kit.**

**Table 1 Kit / Model Compatibility**

**Figure 1 Kit Components**

## Installation Instructions

Prior to installation of this kit, the appropriate front discharge passive heat (PHFR) kit and wallboard finishing material must be installed per the instructions included with the PHFR kit.

**Note:** Before installation of trim kit, ensure both plenums included in the PHFR kit are installed.

**WARNING! Risk of Fire! Two plenums *MUST* be installed for passive heat to function correctly. Overheating of appliance and combustible materials will occur.**

1. Bend the tabs on the left and right sides of the register cover. Place the register backer and register cover on a flat surface and fasten them together using the two hurricane screws provided. See Figure 2.

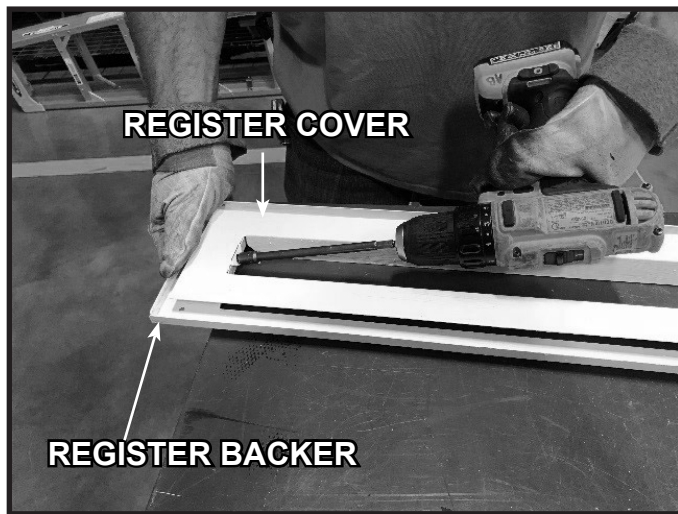


Figure 2 Attach Register Cover to Register Backer (Shown Painted)

2. Hold the attached cover and backer up to the wall centered over the plenums. The back side of the register cover will fit into the opening of the plenums. Mark the location of the register backer's holes on the wall. See Figure 3.



Figure 3 Mark Holes for Register Backer

3. Remove the hurricane screws and disassemble the register cover from the register backer.
4. Mount the register backer to the wall using the provided 1-1/4 inch screws at the marked hole locations from Step 2. See Figure 4.



Figure 4 Register Backer Installed

5. Locate the small hole on the return bend of the register cover. Place the register cover adjacent to the register backer so that the small hole is located on the bottom side of the discharge opening. See Figure 5. If register cover is placed with the hole on the top side, it may be visible. Attach the register cover to the register backer using the provided hurricane screws. See Figure 6. Note that the side tabs will have been bent in Step 1.

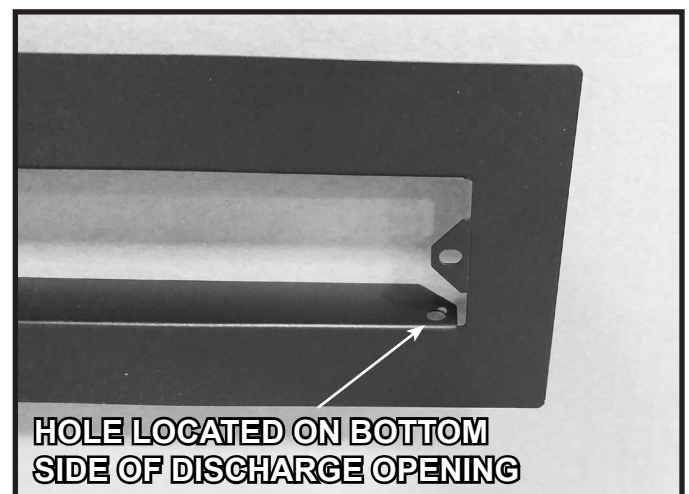


Figure 5 Correct Orientation of Register Cover



Figure 6 Register Cover Installed

**WARNING! Risk of Fire! DO NOT block passive heat register! Overheating will occur.**

## Finishing

1. Apply wall sheathing material, such as drywall up to 1/2 in. (13 mm) thick up to the edge of the discharge opening.

**WARNING! Risk of Overheating! DO NOT apply wall sheathing past the edge of discharge opening. Overheating of appliance and combustible materials will occur.**

### 2. Facing Material with Front Trim Kit

The passive heat kit trim kit is designed to be mounted directly to the drywall surface. Additional facing materials must not be placed behind the trim kit. It is acceptable to place Non-Combustible facing materials up to the edge of the trim kit. See Figure 7. Consult the appliance Installation Manual to determine maximum facing material thickness.

3. Install the required trim kit as instructed to complete the installation.

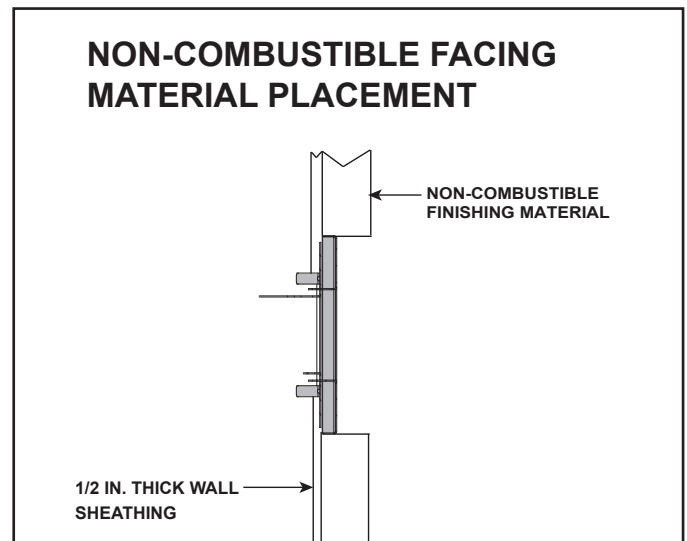


Figure 7 Non-Combustible Facing Material Installed

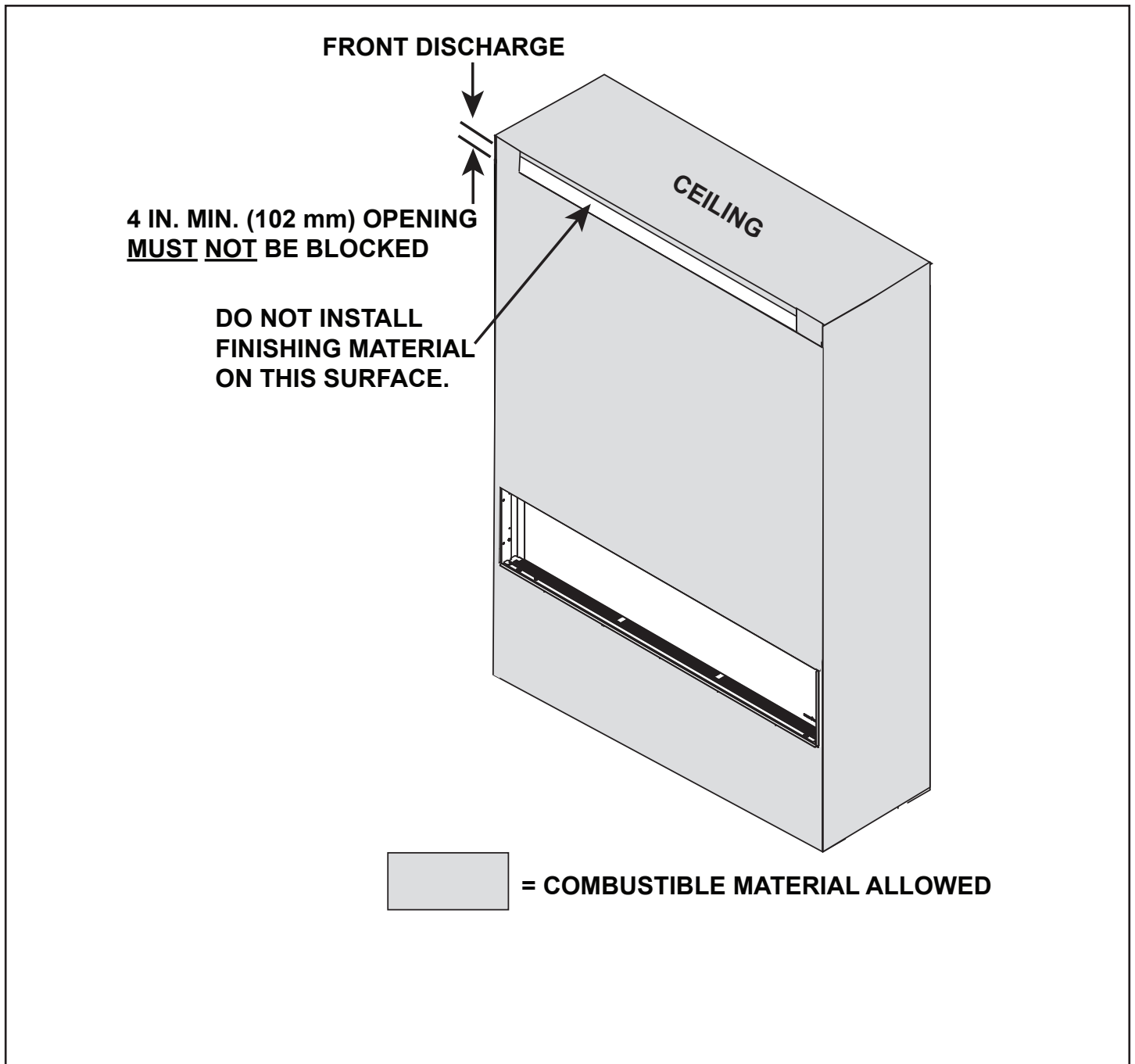


Figure 8 Finishing Material Installed

### Maintenance

Service and maintain the gas fireplace per instructions included with the appliance. Keep the air register clean and free of any blockage.

Please contact your Hearth & Home Technologies dealer with any questions or concerns.

For the location of your nearest Hearth & Home Technologies dealer, please visit [www.hearthnhome.com](http://www.hearthnhome.com).

Hearth & Home Technologies  
7571 215th Street West, Lakeville, MN 55044  
[www.hearthnhome.com](http://www.hearthnhome.com)