

Meridian Series Refractory Installation

BRICK36MERTB, BRICK36MERCRCR, BRICK36MERTBH BRICK42MERTB, BRICK42MERCRCR, BRICK42MERTBH



- Installation Instructions -



Leave this manual with party responsible for use and operation.

DANGER



HOT GLASS WILL CAUSE BURNS.

DO NOT TOUCH GLASS UNTIL COOLED.

NEVER ALLOW CHILDREN TO TOUCH GLASS.

A barrier designed to reduce the risk of burns from the hot viewing glass is provided with this appliance and shall be installed for the protection of children and other at-risk individuals.

CAUTION! Do not install damaged components.

CAUTION! Risk of Cuts or Abrasions! Wear protective gloves and safety glasses during installation.

CAUTION! Risk of Burns! Install this refractory only after the appliance has cooled and the gas and electricity have been shut off.

NOTICE: Handle refractory panels with care. Refractory may chip or crack if dropped or impacted.

These refractory panels are intended for use with the Meridian and Meridian Platinum Series Direct Vent gas appliances. Refer to the installation instructions supplied with the appliance for the correct accessories to be used. If you encounter any problems regarding code approvals or if you need clarification of the instructions contained here, contact your dealer.

NOTE: Refractory styles may vary.

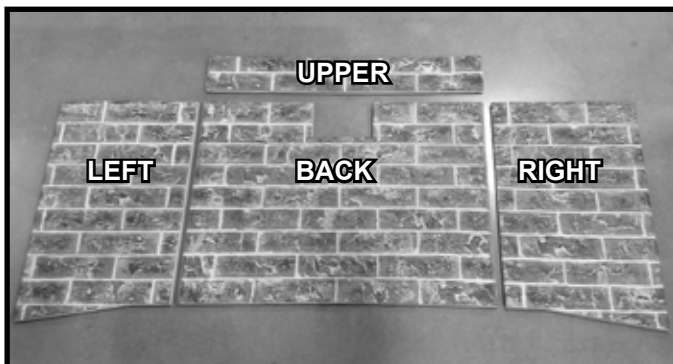


Figure 1. Refractory Kit Components

1. Shut off the power to the appliance and turn the gas shutoff valve to the closed position. Remove the decorative front and glass assembly from the appliance.
2. Carefully remove the logs from the firebox, if installed. Make sure not to damage or impact logs.
3. For some models, it may also be necessary to remove the grate assembly for refractory installation. Remove the grate assembly by removing the 2 screws as shown in Figure 3. The lava rock may have to be brushed away to get access to the screw heads.

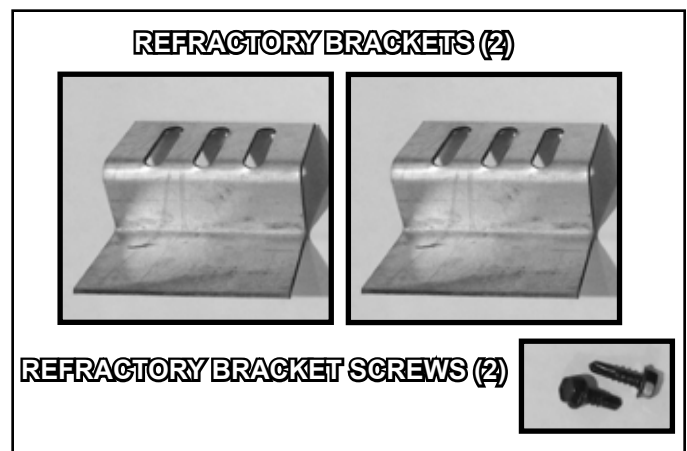


Figure 2. Refractory Kit Hardware



Figure 3. Remove Logs and Grate

4. **MERID36/MERID42 ONLY:** Remove glass baffle and false back by removing screws. The false back is no longer needed. See Figures 4 and 5.

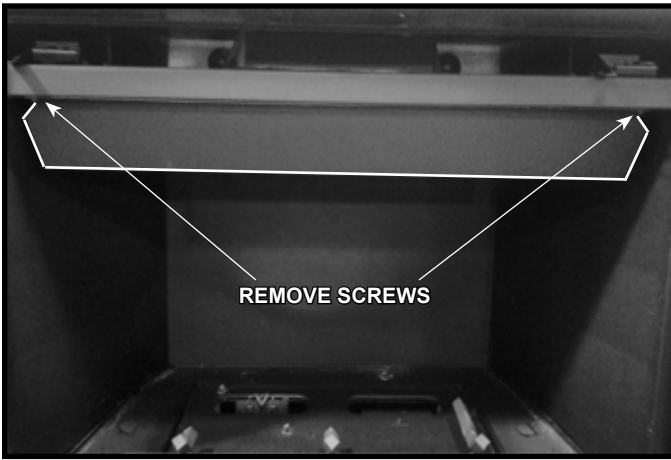


Figure 4. Remove Glass Baffle

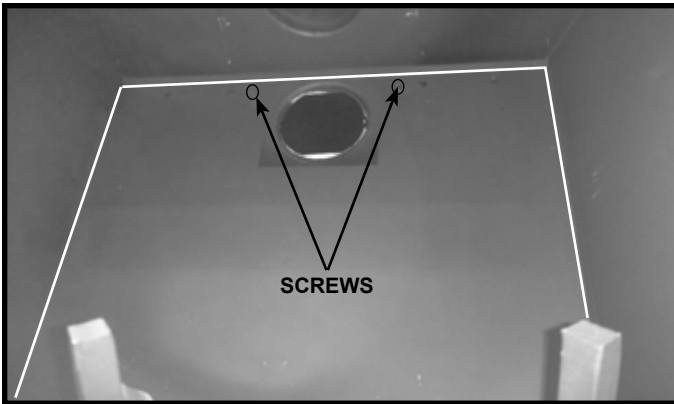


Figure 5. Remove False Back (No Longer Needed)

- Slide the top of the back refractory under the exhaust baffle and position the back refractory as shown in Figure 6. The back panel will be held in position by the side panels. The cutout should be positioned toward the top.

MERID36/MERID42 ONLY: Reinstall glass baffle. See Figure 4.



Figure 6. Install Back Refractory Panel

- To install right refractory panel, orient it as shown in Figure 7 and slide it back into firebox until it rests against back panel, see Figure 8. Right panel is correctly installed when flush with firebox lip as shown in Figure 9.

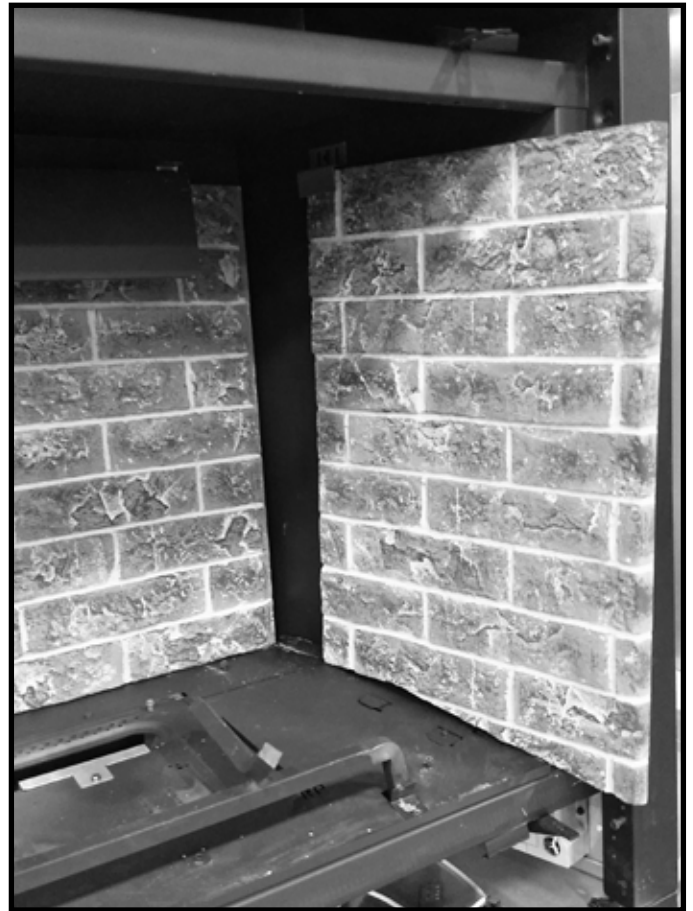


Figure 7. Install Side Refractory Panel



Figure 8.



Figure 9.

7. Once refractory panel is placed into the firebox, install refractory bracket to hold it in place. Use the self-tapping screw provided in the kit to secure the refractory bracket. Refer to Figure 2 and Figure 10.
8. Repeat step 6 and step 7 for left refractory panel.



Figure 10.

9. Position upper refractory onto the lip of the exhaust baffle as shown in Figure 11. Carefully line up the grout lines on the upper and back refractory pieces. The upper refractory will rest on the exhaust baffle.



Figure 11.

10. Bend the two tabs on the top of the exhaust baffle over to retain the upper refractory. See Figure 12.



Figure 12.

11. Figure 13 shows the refractory kit properly installed.
12. Install logs and grate (if removed) back into firebox and make sure they are properly placed. Refer to log instructions. Reinstall glass assembly and decorative front. Restore power and gas flow.



Figure 13. Refractory Kit Properly Installed

Please contact your Majestic dealer with any questions or concerns.
For the location of your nearest Majestic dealer, please visit www.majesticproducts.com.

Majestic, a brand of Hearth & Home Technologies
7571 215th Street West, Lakeville, MN 55044
www.majesticproducts.com