

SHOW-RIVNUT

Installation Instructions



Leave this manual with party responsible for use and operation.

CAUTION! Risk of Cuts, Abrasions or Flying Debris. Wear protective gloves and safety glasses during installation. Sheet metal edges are sharp.

Note: This kit is designed to assist with installation of four new threaded rivnut locations on Slim Line fireplaces manufactured prior to (PRE) serial number 0023877692. This kit includes 24 Rivnuts, which is enough to update up to six appliances.

Note: This kit is also designed to assist in installation of new threaded rivnuts in other products where there is pre-punched hole(s) missing threaded rivnut(s), or if a threaded rivnut needs to be replaced.

CONTENTS:

- Rivnut Tool Kit (SHCS bolt, bushing, Allen key)
- Location Template (Use on SL Fireplaces Only)
- 419-800 Threaded Rivnuts (24)

Verify and remove contents from packaging before beginning installation. See Figure 1 for rivnut tool kit components.

Installation Instructions

If the product is not an SL fireplace, reference Figure 1 for allen key, SHCS bolt, bushing, and rivnut. Discard the location template, and proceed to Step 5.

1. Rivnuts are to be installed in four locations. See Figure 2. Locate the rivnut location template included in the kit. Starting with the upper right corner of the fireplace, align the location template so that the "TOP"

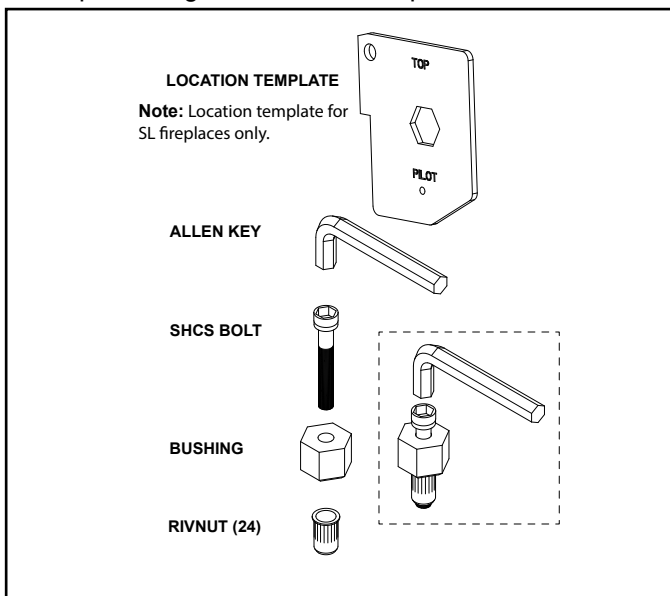


Figure 1. Rivnut Tool Kit

text on the template is positioned up and the tab on the template is inserted into the rectangle notch in the fireplace surround. See Figure 3.

2. While pushing the template into the rectangular notch, use a center punch or small nail to mark the center location of the rivnut to be installed. Remove template after marking the pilot hole location.

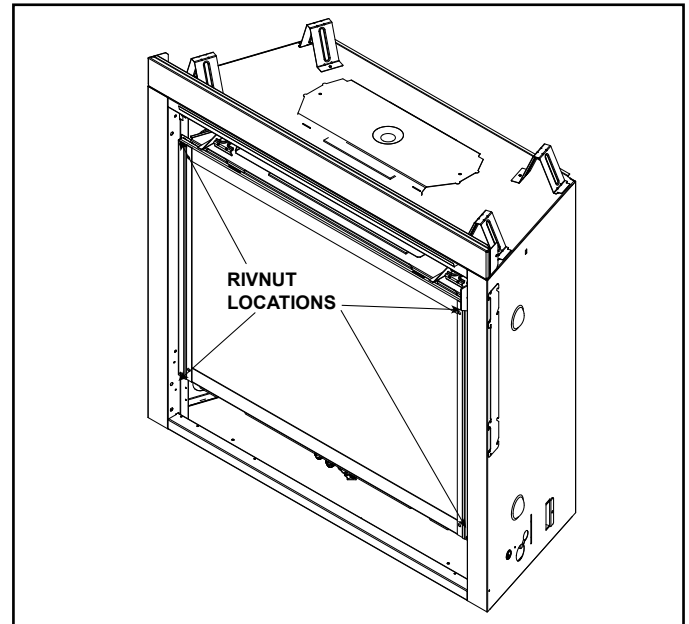


Figure 2. Rivnut Locations - SL Fireplaces

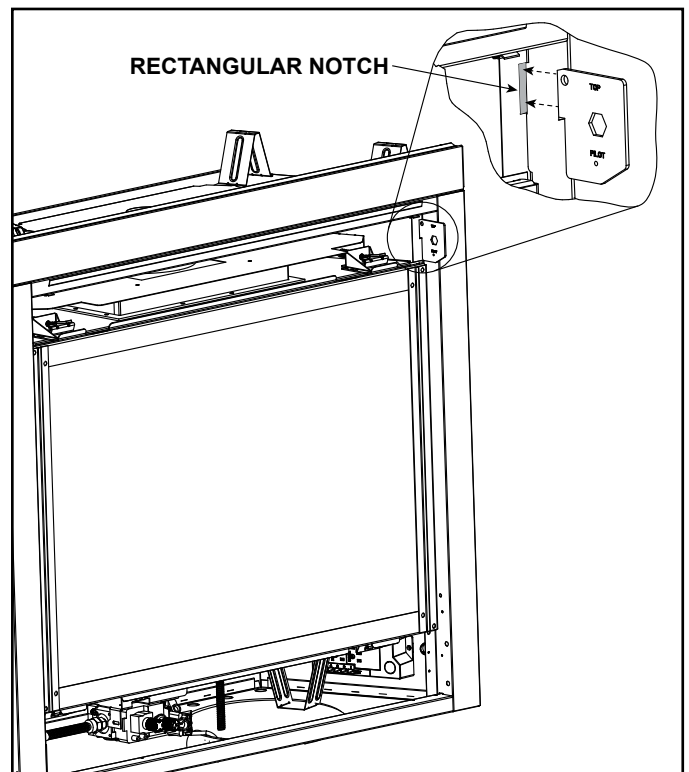


Figure 3. Insert Template - SL Fireplaces

3. Use a 7/64 drill bit to drill a pilot hole into the surround.
4. Next, use a 19/64 drill bit to drill a larger hole to accommodate the threaded rivnut. Do Not drill out the hole larger than 19/64.
5. Test fit the black rivnut into the hole. The fit should be tight; you may need to gently tap on the rivnut to install into the fireplace surround. If attached, remove the silver rivnut from the bushing/bolt assembly and discard. Install a black rivnut onto the bushing/bolt assembly as shown in Figure 4.

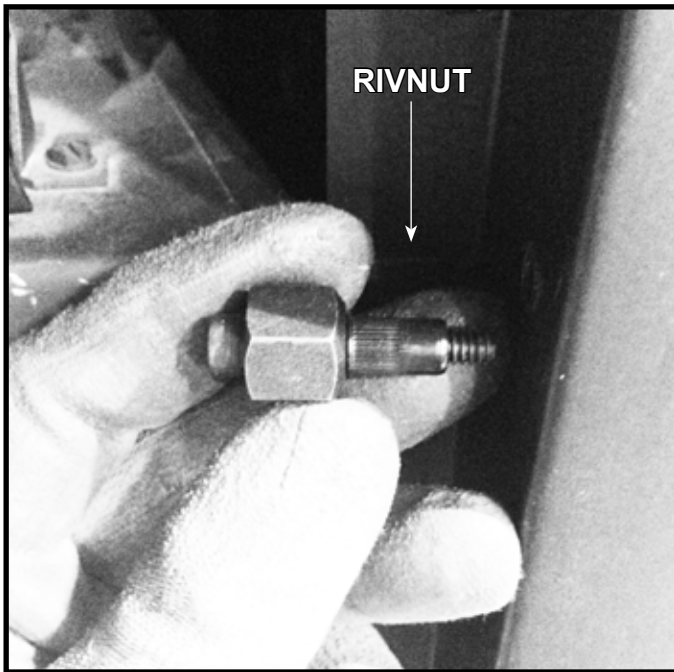


Figure 4. Rivnut Installed on Bushing/Bolt Assembly

7. Use the allen wrench to turn the SHCS bolt clockwise while holding the nut with a 9/16" wrench to form the rivnut securely in the hole. Position the 9/16 inch feature over the black bushing so that the locating tab faces "away" from the fireplace, and insert assembly into the newly drilled hole. Insert the Allen wrench and turn clockwise to tighten the rivnut completely.
8. Turn Allen wrench counterclockwise to remove bolt/bushing assembly.
9. Repeat the process on any remaining rivnut installation locations.

NOTE: Fasteners needed for installation of the decorative front are shipped with the decorative front.

Please contact your Hearth & Home Technologies dealer with any questions or concerns.

For the location of your nearest Hearth & Home Technologies dealer, please visit www.hearthnhome.com.

Hearth & Home Technologies
7571 215th Street West, Lakeville, MN 55044
www.hearthnhome.com