

BRICK-TS

- Installation Instructions -

**Models: TIARAI-BK-IPI, TIARAI-BR-IPI, TIARAI-CES-IPI, TIARAI-BK-IPIL,
 TIARAI-BR-IPIL, TIARAI-CES-IPIL, SAPH-MBK-IPI, SAPH-MBK-IPIL,
 SAPH-D-PMH-IPI, SAPH-D-PMH-IPIL, SAPH-D-MBK-IPI,
 SAPH-D-MBK-IPIL, SAPH-D-CSB-IPI, SAPH-D-CSB-IPIL**

CAUTION: Refractory panels are fragile, handle with care.

CAUTION! Risk of Cuts, Abrasions or Flying Debris. Wear protective gloves and safety glasses during installation. Sheet metal edges are sharp.



Leave this instruction with party responsible for use and operation.

INSTALLATION

1. Ensure the appliance is turned off and cooled. Remove front casting and glass as instructed in the appliance Installation Manual.
2. Remove logs and set aside.
3. Locate the two bottom refractory panel brackets located on the left bottom side of the firebox. Bend tabs on lower bracket as shown in Figure 1.
4. Bend upper bracket on left side in one spot as highlighted in Figure 1.
5. Install left refractory panel bottom into lower bracket. See Figure 2. Push top of panel tight against the left side of the firebox.
6. Bend the outer portion of the upper refractory bracket down to retain refractory panel. See Figure 1 and Figure 3.
7. Repeat Steps 3-6 for right side refractory panel.
8. Reinstall logs as instructed in the appliance Installation Manual.
9. Reinstall glass and front casting as instructed in the appliance Installation Manual.



Figure 2. Bottom Refractory Panel Brackets

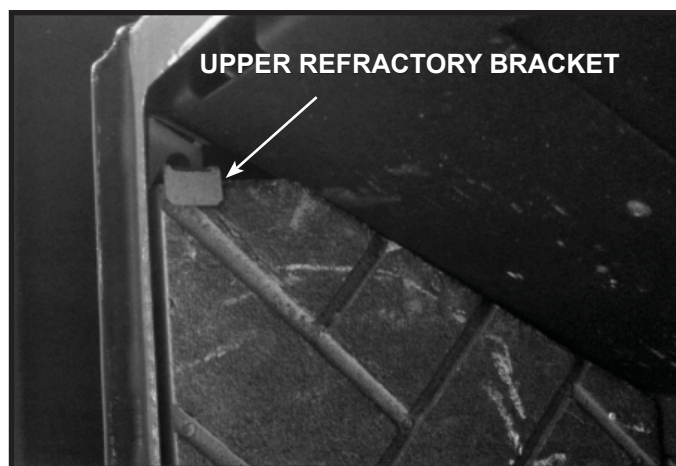


Figure 3. Upper Refractory Bracket

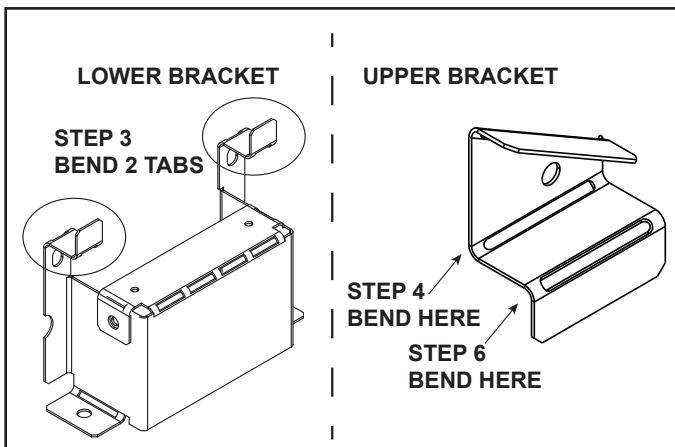


Figure 1. Refractory Bracket Bends

Please contact your Hearth & Home Technologies dealer with any questions or concerns.

For the location of your nearest Hearth & Home Technologies dealer,
 please visit www.hearthnhome.com

Hearth & Home Technologies
 7571 215th Street West, Lakeville, MN 55044
www.hearthnhome.com