

LOGS-48

MODELS: MEZZO48 Series, CRAVE6048 Series, MEZZO-1000-AU, MEZZO-1000-AUB

Installation Instructions



Leave this manual with party responsible for use and operation.

CAUTION! Risk of Cuts or Abrasions. Wear protective gloves and safety glasses during installation.

CAUTION: Logs are fragile, handle with care.

Kit Components:

- Burner Port Fixture
- Ceramic Logs (7)
- Shoulder Screws (12)
- Self-tapping Screws (6)

INSTALLATION

1. Remove decorative front. Remove fixed glass assembly by unlatching the four top spring latches. Allow the fixed glass assembly to tilt away from the fireplace and lift the fixed glass assembly up and out of the opening.
2. Remove any existing media from appliance.
3. Lift burner rails out of appliance.

For Natural Gas appliances, the air shutter should be adjusted for optimal flame appearance. If LOGS-48 is being installed on a Propane appliance, proceed to step 8.

NG Appliances Only:

4. Remove the media tray. It is attached to the interior firebox bottom with ten screws.
5. Remove the two screws that attach the pilot to the burner.
6. Remove the four screws securing the burner to the firebox sides and disengage burner from orifice. Remove burner.
7. Adjust shutter setting on NG burner to 1/4 in. Reinstall burner, pilot and media tray. For more information, see the appliance installation manual.

NG and Propane Appliances:

8. Install twelve shoulder screws into pilot holes in media tray. Locations are indicated in Figure 1.



Figure 1. Location of Shoulder Screws

9. There are 6 burner port holes that must be plugged in order to prevent sooting. Place burner port fixture over shoulder screw #7 as shown in Figure 2. Ensure the "UP" marking is in the correct orientation. The corner cut out will fit around a media tray screw as shown in the detail of Figure 2.

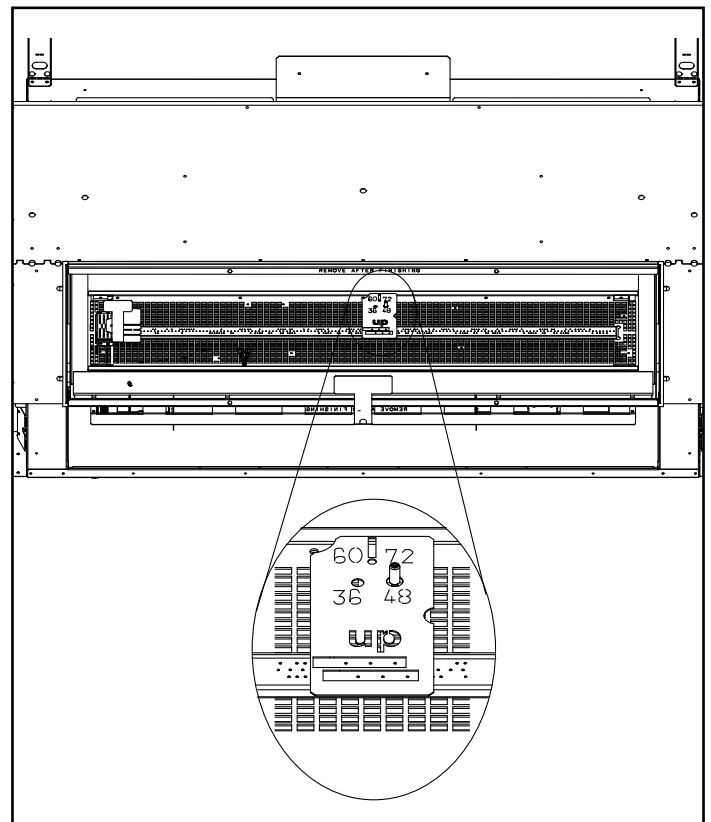


Figure 2. Location of Burner Port Fixture

10. Insert six self-tapping screws into the 6 burner ports that lie within the burner port fixture rectangle holes. See Figure 3.

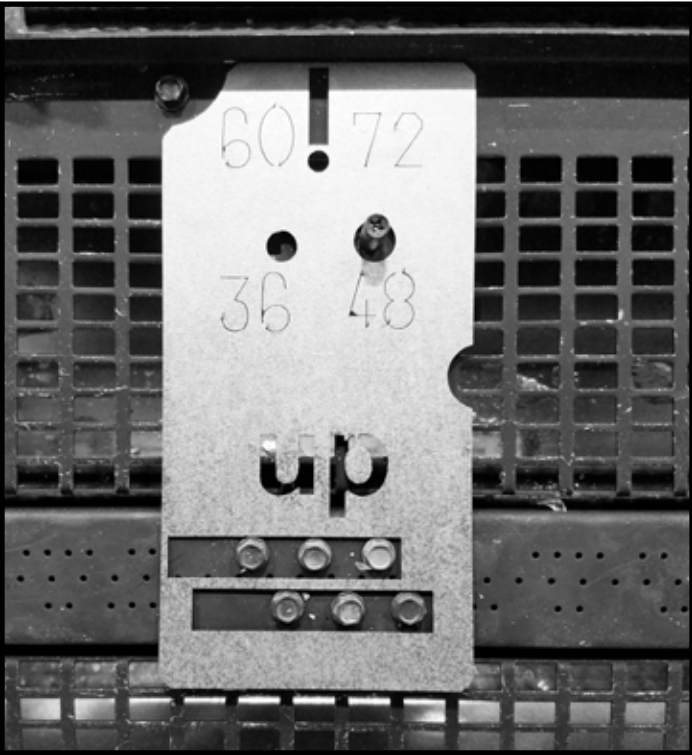


Figure 3. Insert Screws into Six Burner Ports

11. Remove burner port fixture. Discard. Reinstall burner rails.

12. **LOG #1 (SRV2300-703), QTY 2:** Install Log # 1. Place log so that the shoulder screws fit into the holes on the bottom of the log and the logs contact the firebox sides. Repeat for both ends of the media tray. See Figure 5.

Note: Log #1, Log #2 and Log #3 have holes located on the bottom that are used for placement on corresponding shoulder screws. See Figure 4.

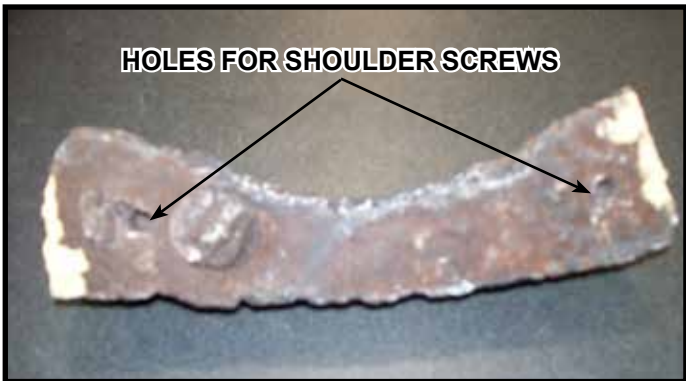


Figure 4. Log Placement Holes



Figure 5. Log #1 (SRV2300-703) Left and Right Side Placement

13. **LOG #2 (SRV2300-704):** Install Log # 2. Place log so that the larger end of the log is in contact with the locating screw and the small end of the log is resting on the end of Log #1. See Figure 6.



Figure 6. Log #2 (SRV2300-704)

14. **LOG #3 (SRV2300-705):** Install Log # 3. Install log onto shoulder screws #3 and #6 by lining up shoulder screws with holes in bottom of log.

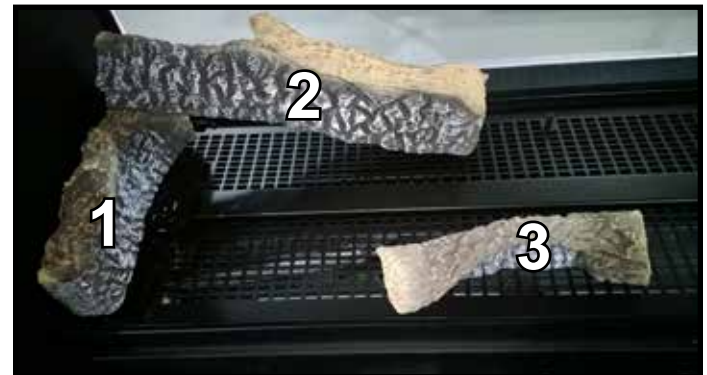


Figure 7. Log #3 (SRV2300-705)

15. **LOG #4 (SRV2300-706):** Install Log # 4. Install log onto shoulder screws #7 and #9 by lining up shoulder screws with holes in bottom of log.

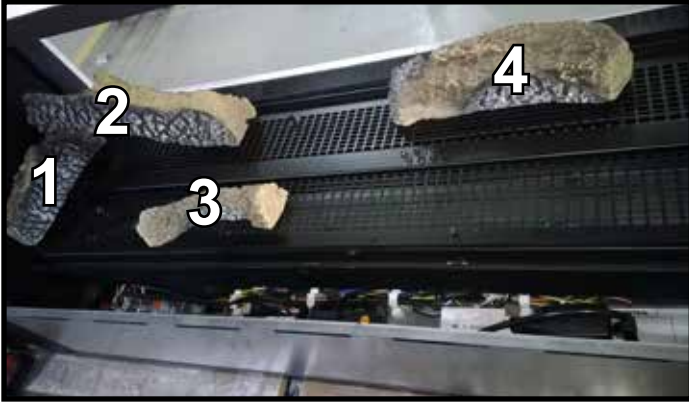


Figure 8. Log #4 (SRV2300-706)

16. **LOG #5 (SRV2300-707):** Install Log # 5. Place log so that the back end sits against shoulder screw #5. See Figure 9. The other end of the log will contact shoulder screw #8. The center of the log will rest on Log #4, crossing the burner over the screws which were installed in Step 9.

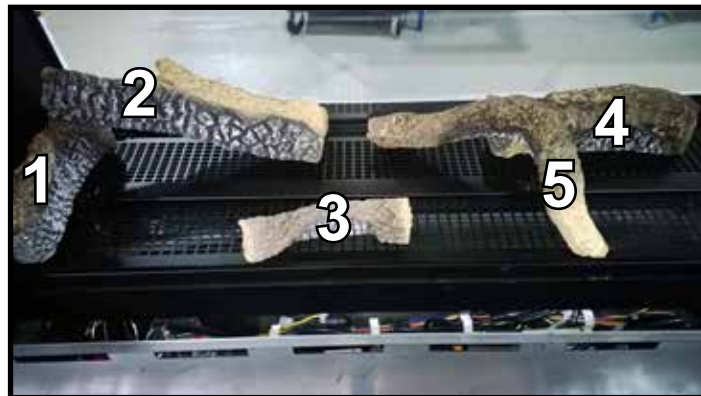


Figure 9. Log #5 (SRV2300-707)

17. **LOG #6 (SRV2300-708):** Install Log # 6. Place log so that the forked end is facing the firebox opening and the left limb is in contact with the locating screw. The other end of the log will rest on Log # 5 and should be as far forward as possible without interfering with glass installation.

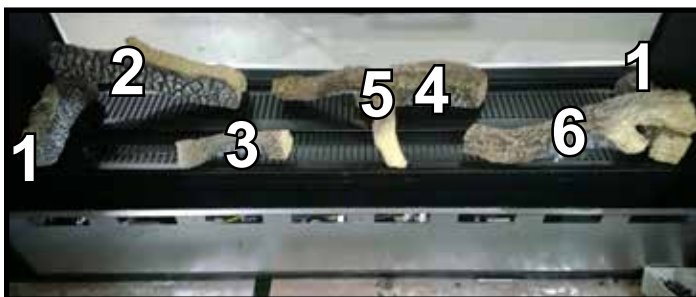


Figure 10. Log #6 (SRV2300-708)

18. Place media on media tray according to instructions included with media kit. Once the logs are installed, there will not be room for all of the media originally installed. The amount used should decrease by approximately five pounds (1 bag).

NOTICE: Do not reinstall all glass media. Decrease amount used by five pounds (1 bag).

⚠ WARNING



Delayed Ignition Risk

- Place media according to instructions.
- Do NOT place media in area in front of pilot.
- Do NOT place media in a position that they may fall into area in front of pilot.
- Do NOT use any media other than the media supplied with the appliance.
- Do NOT use more than the amount shipped with the appliance.

Fireplace will not function properly.
Delayed ignition may occur.

19. Replace fixed glass assembly and decorative front on appliance.

Please contact your Hearth & Home Technologies dealer with any questions or concerns.

For the location of your nearest Hearth & Home Technologies dealer,

please visit www.hearthnhome.com.

Hearth & Home Technologies
7571 215th Street West, Lakeville, MN 55044
www.hearthnhome.com