

MEDIA-AMBER-36/48/60/72, MEDIA-CLEAR-36/48/60/72, MEDIA-COBALT-36/48/60/72,
MEDIA-EBONY-36/48/60/72, MEDIA-FOG-36/48/60/72, MEDIA-RED-36/48/60/72
MODELS: MEZZO, MEZZO-B, MEZZO-C, CRAVE, CRAVE-B, CRAVE-C, PRIMO
- Installation Instructions -



Leave this manual with party responsible for use and operation.

WARNING! Choking Hazard! Keep media out of reach of children.

CAUTION! Risk of Burns! The fireplace should be turned off and cooled before media is installed.

CAUTION! Risk of Cuts, Abrasions or Flying Debris. Wear protective gloves and safety glasses during installation. Sheet metal edges are sharp.

NOTE: MEDIA-FOG-60 is not approved for use with PRIMO60/PRIMO60ST Propane appliances. Sooting could occur.

Cleaning the Media

During shipment of the media, dust and debris can accumulate. It is recommended that the media be rinsed thoroughly with water to remove dust and small particles. An easy method to clean the media is to place the media into a pail and rinse thoroughly. Spread the media out over paper towels and allow the media to dry before installing them into the fireplace.

INSTALLATION

Note: If both the media and logs will be installed, the logs must be installed first.

1. Choose 7 - 10 round pieces of media approximately 1/2 inch in size and set them aside. These will be used later to conceal the pilot end of the burner. Reference Figure 1 for choosing round pieces of glass.

WARNING! Risk of Explosion! DO NOT put any flat media pieces larger than 1/2 inch in diameter near pilot. Delayed ignition could occur. Use only round 1/2 inch pieces near pilot.

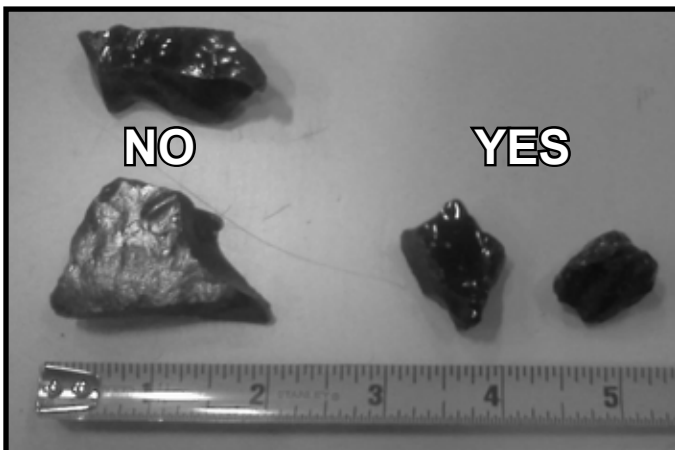


Figure 1. Selecting Flat Media for Pilot Cover.

2. The included media placement jig, shown in Figure 2 (MEZZO/CRAVE) and Figure 3 (PRIMO), MUST be used any time media are placed on the burner to ensure that none end up in the burner lighting area. Verify that the media placement jig is correctly installed in place in the appliance. See Figure 4.

⚠ WARNING



Delayed Ignition Risk

- Place media according to instructions.
- Do NOT place media in area in front of pilot
- Do NOT place media in a position that they may fall into area in front of pilot.
- Do NOT use any media other than the media supplied with this fireplace.
- Do NOT exceed one layer of media on base pan.

Fireplace will not function properly.
Delayed ignition may occur.

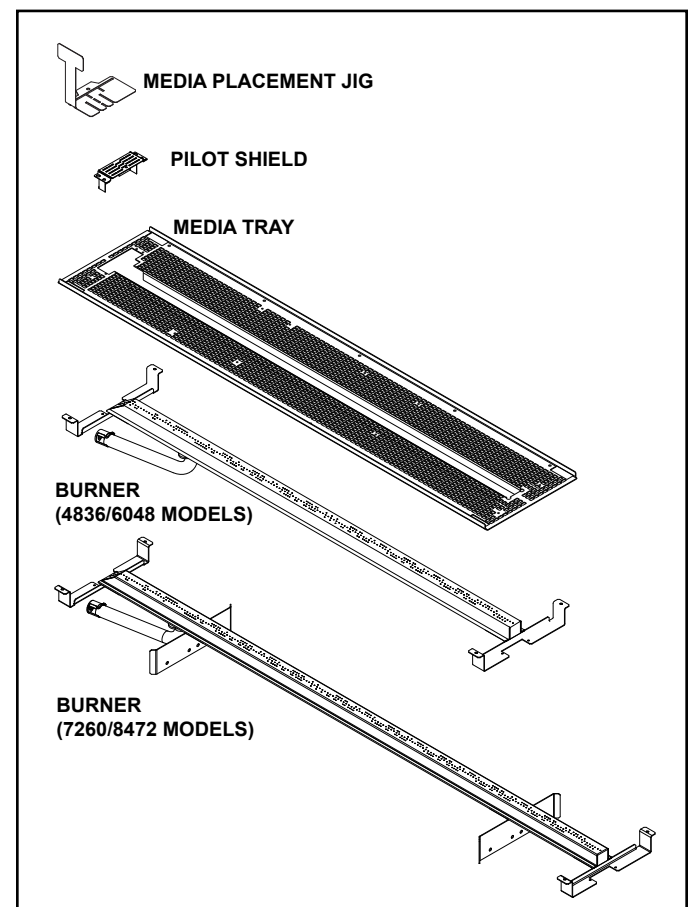


Figure 2. Media Tray Components - MEZZO/CRAVE

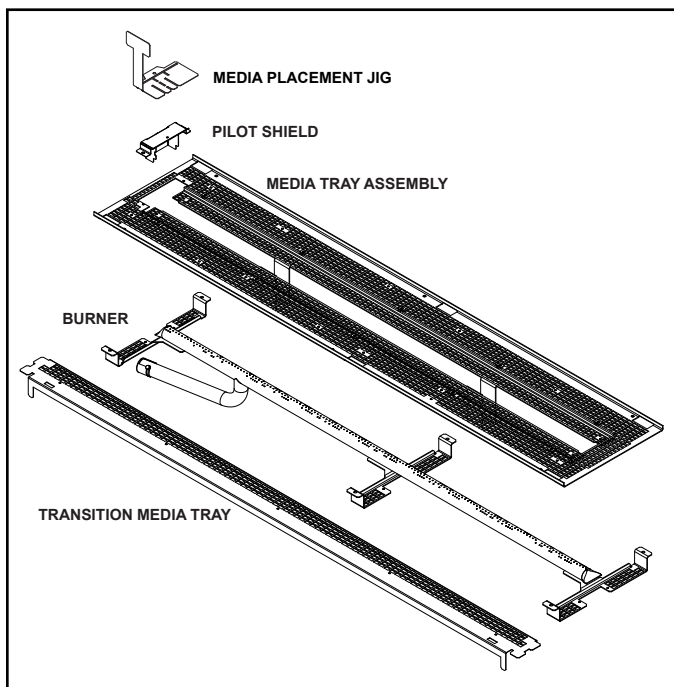


Figure 3. Media Tray Components - PRIMO

3. The media placement jig must remain in place while media is placed on the media tray and around the pilot bracket.

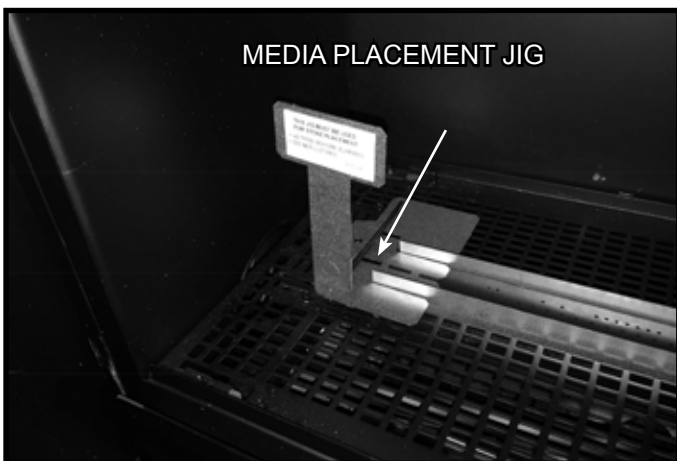


Figure 4. Media Placement Jig Location - MEZZO/CRAVE/PRIMO

4. Place an even layer of media around the media tray as shown in Figure 5. **DO NOT place media on media placement jig.**

PRIMO APPLIANCES ONLY: Place media in media tray assembly as directed in chart below. An excessive amount of media could cause sooting to occur.

MODEL	MAX. # BAGS INSIDE APPLIANCE (media tray assembly)
PRIMO48/48ST	3
PRIMO60/60ST	4
PRIMO72/72ST	5

⚠ WARNING

Risk of Asphyxiation or Fumes.

- Place media according to instructions.
- Do NOT place media in area between glass and firebox.
- Do NOT place media in a position that they may fall into area between glass and firebox.
- Do NOT use any media other than the media supplied with this fireplace.

Fireplace will not function properly.
Gas leak may occur.



Figure 5. Media Placement Jig in Place

5. Remove the screw, noted in Figure 6, from the media placement jig and carefully lift the jig out of the appliance. **DO NOT allow any pieces of media to fall into the area in front of the pilot.**

WARNING! Risk of Explosion. DO NOT place media directly in front of the pilot assembly. Delayed ignition could occur.

6. Place the round media set aside in Step 1 over the pilot shield and areas uncovered by removing the media placement jig. **DO NOT allow any media in the 1 inch area shown in Figure 7 and Figure 8.**

WARNING! Risk of Explosion. DO NOT place media directly in front of the pilot assembly. Delayed ignition could occur.



Figure 6. Remove Media Placement Jig



Figure 7. Media Installed - MEZZO Shown

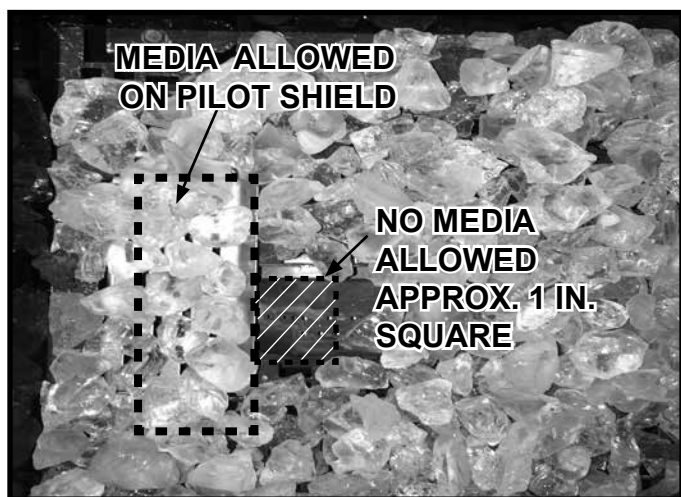


Figure 8. Pilot Shield Media installation.

Fogging Option

(MEDIA-FOG “Teco-Sil” Only)

7. If desired, the media can be fogged using high temperature black paint (Hearth & Home Technologies part number TUP-GBK-12). See below for fogging tips. Prior to painting, take precautions to prevent any overspray from reaching the pilot assembly.
 - Apply paint with the LED lights turned on. This will help you avoid over fogging or under fogging.
 - Ensure firebox interior and logs (if installed) are covered to prevent overspray.
 - Reduce the lighting in the room while applying the paint.
 - Fog the media to the desired look.
 - Allow the paint to dry/cure a minimum of 15 minutes.

NOTE: MEDIA-FOG-60 is not approved for use with PRIMO60/PRIMO60ST Propane appliances. Sooting could occur.



Figure 9. Fogging the Media

8. Place the glass frame assembly back on the appliance according to the instructions provided in the appliance installation manual. Assume that there is no media between the glass and the firebox. Media in this area will prevent the glass gasket from sealing.

WARNING! Risk of Asphyxiation! Install glass assembly with care. Gasket **MUST** be sealed. Remove all media between glass and firebox.

MEZZO/CRAVE: Proceed to Step 9.

PRIMO: Proceed to Step 10.

9. Install bottom glass shield between glass and glass frame. See Figure 10.

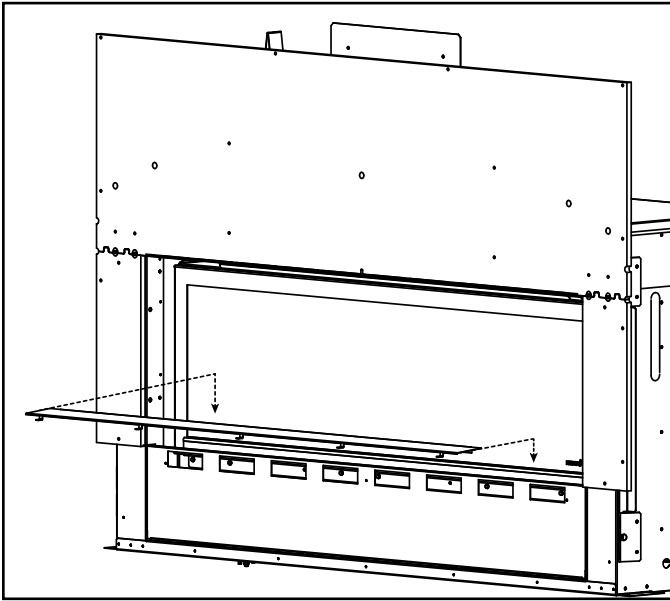


Figure 10. Install Bottom Glass Shield - MEZZO/CRAVE

PRIMO ONLY:

10. Place an even layer of media on the transition media tray as shown in Figure 14.
11. Place the barrier glass in place according to the instructions provided in the appliance installation manual.

Note: Steps 10 and 11 will be repeated one time if the appliance is a See-through model.

PRIMO APPLIANCES ONLY: Place media in transition media tray as directed in chart below. There will be approximately one bag of extra media on single-sided appliances.

SIZE	TRANSITION MEDIA TRAY #BAGS PER SIDE
PRIMO48/48ST	approximately 1
PRIMO60/60ST	approximately 1
PRIMO72/72ST	approximately 1



Figure 11. Place Media in Barrier Tray - PRIMO

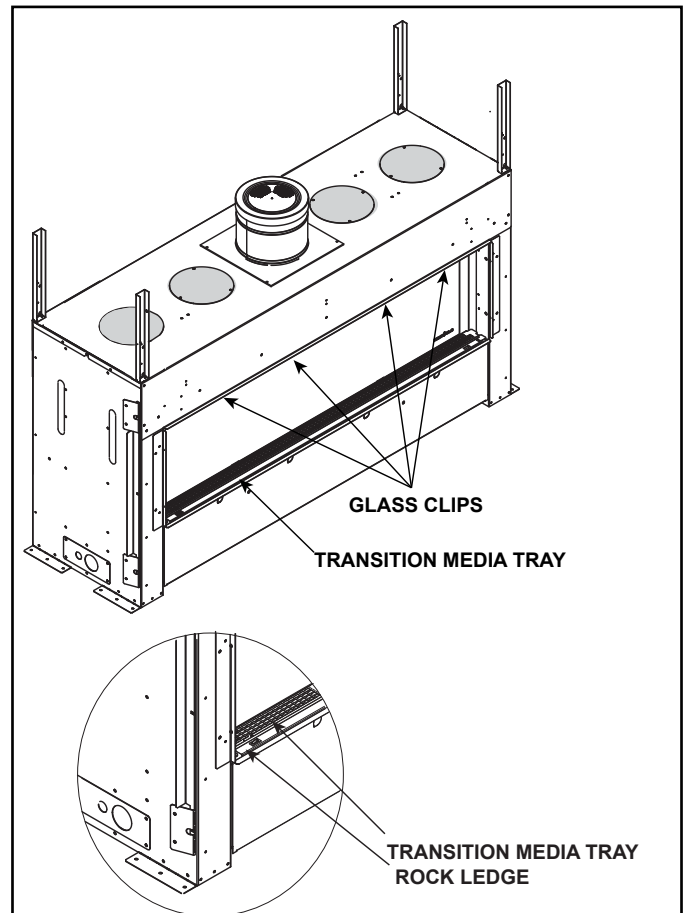


Figure 12. Location of Glass Clips and Transition Media Tray

TROUBLESHOOTING

After the initial start up burn, it may be necessary to adjust the media placement to achieve the best flame appearance. While flame height variation is normal, there may appear to be higher peaks in some areas and low flame peaks in other areas.

If the flame height appears to be excessively high in some spots, applying more media to these areas on top of the burner will help even out the flames. Spreading the media as evenly as possible is the most effective way to achieve optimal flame appearance and the most even flame heights. One or more test burns may be required to watch the flames mature and see how even they look before making adjustments.

Avoid using media pieces larger than two inches in diameter, these can be disruptive to the flame patterns. If you find extra large media pieces, discard.

Please contact your Hearth & Home Technologies dealer with any questions or concerns.
For the location of your nearest Hearth & Home Technologies dealer,
please visit www.hearthnhome.com.

Hearth & Home Technologies
7571 215th Street West, Lakeville, MN 55044
www.hearthnhome.com