

**BRICKMQ36TB, BRICKMQ36CR, BRICKMQ36HB, BRICKMQ42TB,
BRICKMQ42CR, BRICKMQ42HB, BRICKMQ36TB-B,
BRICKMQ36HB-B, BRICKMQ42TB-B, BRICKMQ42HB-B**



Models: MARQ36IN, MARQ42IN, MARQ36IN-B, MARQ42IN-B

Refractory Installation Instructions -



Leave this manual with party responsible for use and operation.

CAUTION! Risk of Cuts or Abrasions. Wear protective gloves and safety glasses during installation.

NOTICE: Handle refractory panels with care. Refractory may chip or crack if dropped or impacted.

SPECIAL TOOLS

Screw gun equipped with 1/4 in. socket
1/4 IN. wrench or socket

REFRACTORY KIT COMPONENTS

- (1) Left Panel
- (1) Right Panel
- (1) Back Panel
- (2) Left Base
- (1) Right Base
- (1) Middle Base

NOTE: The pictures show the MARQ36IN/MARQ42IN being installed, but the instructional steps work the same for the MARQ36IN-B/MARQ42IN-B as well.

INSTALLATION

1. Position the back panel in the firebox with the hole at the bottom. Center the back panel and push it into place. See Figure 1. The screws that are located on the back of the firebox will penetrate the back panel.



Figure 1. Install Back Panel

2. Slide left panel into the firebox from the front until it is flush with the front edge of the firebox. Push the panel against the left side of the firebox. The 1/4 inch screws will penetrate the panel. Refer to Figure 2. Bend the refractory clip down to secure the top of the panel in place. See Figure 3.



Figure 2. Install Left Side Panel



Figure 3. Side Panel Refractory Clip

3. Install the right side panel as shown in Figure 4. Do not push the panel all the way to the back at this point.



Figure 4. Install Right Side Panel

4. Place the left side of the top panel on the top of the left side panel. Lift up the right side of the top panel until it touches the firebox top. See Figure 5.



Figure 5. Install Top Panel

5. While pushing the top panel upward, slide the right panel toward the back of the appliance until it contacts the back panel.
6. Push the right panel against the right side of the firebox until the screws penetrate the panel to hold it in place. Bend down the right refractory clip so refractory fits like Figure 6.



Figure 6. Fitted Top Panel

7. Install back left base refractory. This piece has a bevelled edge on the bottom to aid in installation. Tilt the piece and put into position as shown in Figure 7 and Figure 8.

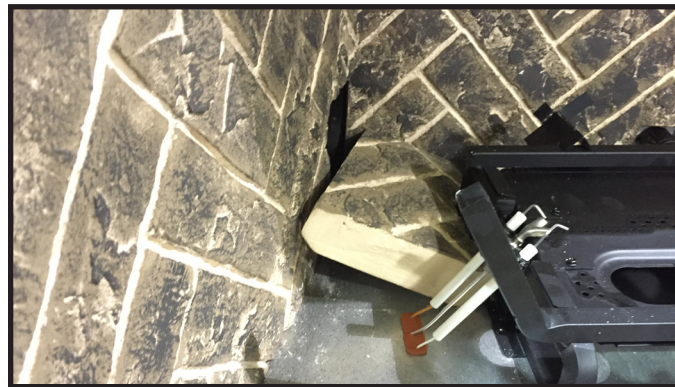


Figure 7. Tilt Back Left Base Panel Into Position



Figure 8. Back Left Base Panel In Position

8. Install the front left base piece by sliding it into place around the pilot assembly and front left grate tine as shown in Figure 9.



Figure 9. Front Left Base Piece Installed

9. Install middle base refractory by sliding it between front left and right grate tines. The front edges of the left and middle base pieces should be flush with each other. See Figure 10.



Figure 10. Middle Base Piece Installed

Note: The base pieces are designed to fit together tightly to minimize the visibility of the lines between them.

10. Install right base refractory by sliding it into place. When contact is made with the adjacent middle base refractory, lift up slightly on both pieces while continuing to push the right base piece into the appliance. Continue until the front edges of the middle and right base pieces are flush. See Figure 11.

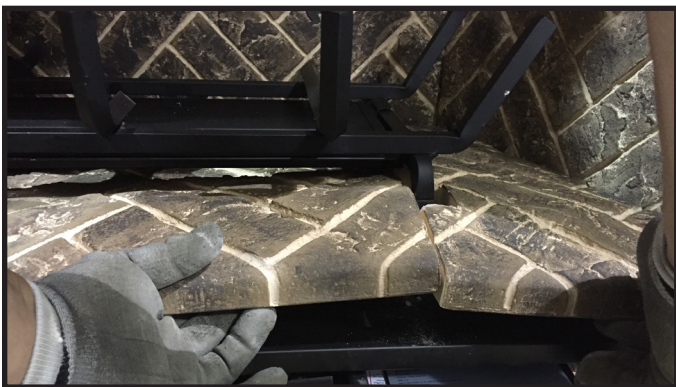


Figure 11. Install Right Base Refractory Piece

11. Press down firmly on each panel until the panel is penetrated by the screws on the bottom of the appliance.



Figure 12. Right Base Refractory Piece Installed



Figure 13. Right Base Refractory Piece Installed

12. Install the logs, embers and lava rock. Refer to the instructions in the appliance owner's manual.

Please contact your Majestic dealer with any questions or concerns.
For the location of your nearest Majestic dealer,
please visit www.majesticproducts.com.

Majestic, a brand of Hearth & Home Technologies
7571 215th Street West, Lakeville, MN 55044
www.majesticproducts.com