

# Tonic Decorative Front

## Model: SLR32

### Installation & Operating Instructions

# HEAT & GLO™

No one builds a better fire



Leave this manual with party responsible for use and operation.

**CAUTION! Risk of Cuts or Abrasions.** Wear protective gloves and safety glasses during installation. Sheet metal edges are sharp.

**CAUTION! Do not install damaged components.**

## ⚠ WARNING



### HOT SURFACES!

Glass and other surfaces are hot during operation AND cool down.

**Hot glass will cause burns.**

- **DO NOT** touch glass until it is cooled
- **NEVER** allow children to touch glass
- Keep children away
- CAREFULLY SUPERVISE children in same room as fireplace.
- Alert children and adults to hazards of high temperatures.
- **High temperatures may ignite clothing or other flammable materials.**
- Keep clothing, furniture, draperies and other flammable materials away.
- Do NOT operate with protective barriers open or removed.
- These instructions are to be left with a person responsible for the use and operation of the fireplace.

**WARNING! Risk of Fire!** Combustible materials **MUST NOT** overlap or be placed under a surround.

### CONTENTS:

- Decorative Front Assembly
- Four Shoulder Bolts
- Mesh screen and two mesh clips

Verify and remove contents from packaging before beginning installation.

## Installation Instructions

1. Install glass assembly on fireplace.
2. Locate the top two slots in the glass frame assembly. These will correspond to mesh clips on the mesh frame assembly. See Figure 1.
3. Snap the two mesh clips into the top two corresponding slots in the glass frame assembly. See Figure 1.
4. Install mesh assembly onto fireplace and engage mesh with bottom permanent glass clips and snap two mesh clips into slots on glass frame. Ensure that the mesh frame assembly is installed tightly on glass so that the spline is projecting outward from the fireplace. See Figure 2.

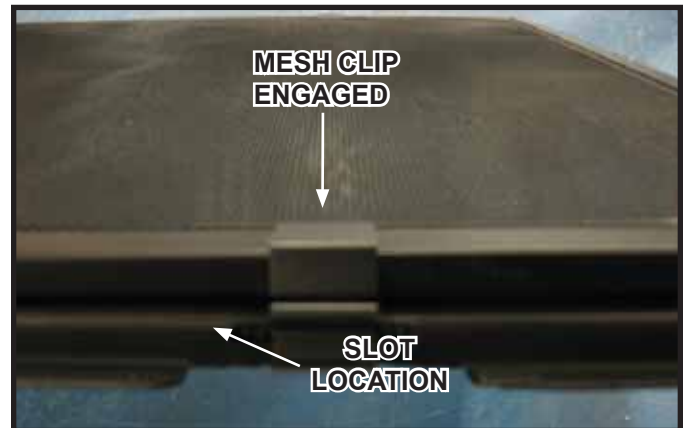


Figure 1. Mesh Clips Installed.



Figure 2. Location of Mesh Clips.

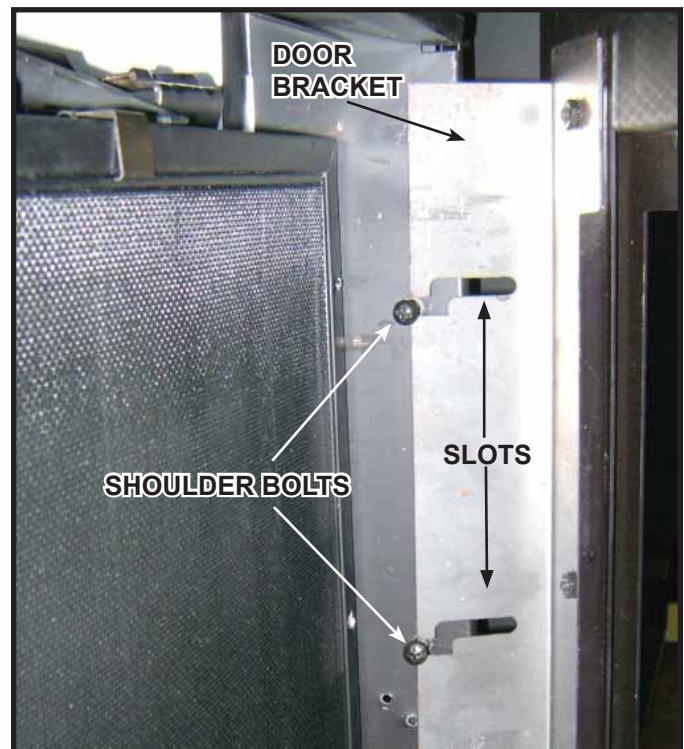


Figure 3. Location of Bracket, Slots and Shoulder Bolts

5. Install four shoulder bolts, 2 per side, as shown in Figure 3.
6. Install the door into the fireplace opening. Note the orientation of the door brackets. The slots in the bracket will only line up with the rivnuts in the fireplace if the door is installed correctly. See Figure 3.
7. Push front toward fireplace ensuring it fits tight to finish material.

### Removing and Replacing Fixed Glass Assembly

**WARNING! Risk of Asphyxiation!** Handle fixed glass assembly with care. Inspect the gasket to ensure it is undamaged and inspect the glass for cracks, chips or scratches.

- **DO NOT** strike, slam or scratch glass.
- **DO NOT** operate fireplace with glass removed, cracked, broken or scratched.
- Replace as a complete assembly.

### Removing Fixed Glass Assembly

1. Remove the decorative front.
2. Locate the two spring latches that are on the upper left and right of the fireplace.
3. Use both index fingers to release spring latches.
4. Allow glass to tilt forward. Grasp glass on the upper right and left sides and lift glass “up” and “out.”

### Replacing Fixed Glass Assembly

1. Grasp glass on upper right and left sides and tilt bottom of glass assembly toward fireplace.
2. Allow of the bottom gasketing of the glass assembly to touch the face of the fireplace.
3. Put pressure on the glass as you allow the glass assembly to drop into the two lower glass clips.
4. Tilt top of glass towards fireplace and engage both top spring latches.

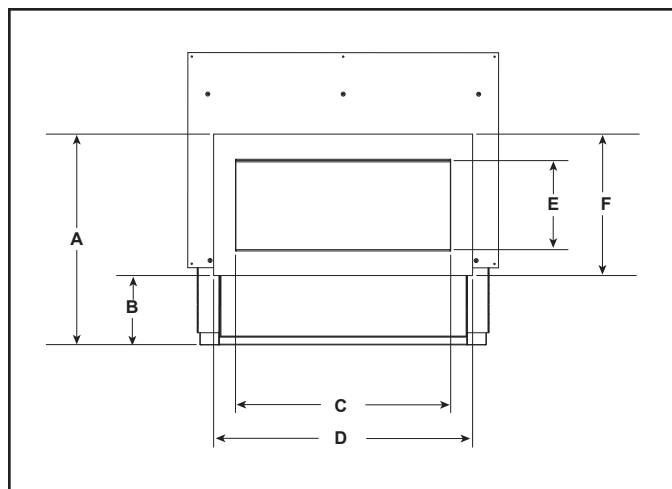


Figure 4. Dimensions of Tonic Decorative Front.

Table 1. Dimensions of Tonic Decorative Front.

DIMENSION		TN-SLR32-**		TN-SLRL32L-**	
		IN.	mm	IN.	mm
A	Top of decorative front to bottom of appliance.	26-3/8	671	26-7/8	683
B	Bottom of decorative front to bottom of appliance.	8-11/16	220	8-3/16	208
C	Inside dimension of decorative front (width).	27	686	27	686
D	Outside dimension of decorative front (width).	32-1/2	826	33-1/2	851
E	Inside dimension decorative front (height).	11-3/16	284	11-3/16	284
F	Outside dimension of decorative front (height).	17-3/4	451	18-3/4	476

### Service Parts

PART #	DESCRIPTION
SRV-SLR32-MESH	Replacement Mesh

### Cleaning Instructions for Fronts

Use a microfiber cloth and Windex® Original Glass Cleaner or 03M003 Stove Bright® Glass Cleaner to clean the front immediately after installation to remove acids deposited by the installer or technician. Spray the cleaner onto the microfiber cloth and carefully wipe the entire surface. The front should be cleaned in this manner annually by the homeowner to remove fingerprints or other contaminants. Once oxidation of the paint pigment has occurred, cleaning will not restore the original color.

Please contact your Heat & Glo dealer with any questions or concerns.

For the location of your nearest Heat & Glo dealer, please visit [www.heatnglo.com](http://www.heatnglo.com).

Heat & Glo, a brand of Hearth & Home Technologies  
7571 215th Street West, Lakeville, MN 55044  
[www.heatnglo.com](http://www.heatnglo.com)